



wwPDB EM Validation Summary Report ⓘ

Apr 15, 2026 – 12:30 AM UTC

PDB ID : 9UFX / pdb_00009ufx
EMDB ID : EMD-64125
Title : Cryo-EM structure of HA11-bound alpha-synuclein fibril polymorph 6A6B
Authors : Zhang, S.Q.; Liu, C.; Li, D.
Deposited on : 2025-04-10
Resolution : 2.60 Å(reported)

This is a wwPDB EM Validation Summary Report for a publicly released PDB entry.

We welcome your comments at validation@mail.wwpdb.org

A user guide is available at

<https://www.wwpdb.org/validation/2017/EMValidationReportHelp>

with specific help available everywhere you see the ⓘ symbol.

The types of validation reports are described at

<http://www.wwpdb.org/validation/2017/FAQs#types>.

The following versions of software and data (see [references ⓘ](#)) were used in the production of this report:

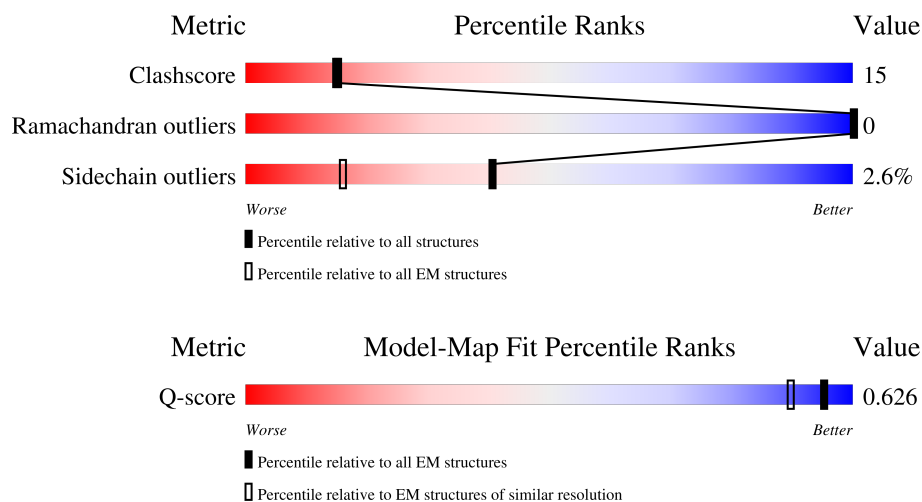
EMDB validation analysis : 0.0.1.dev132
Mogul : 2022.3.0, CSD as543be (2022)
MolProbity : 4-5-2 with Phenix2.0
Buster-report : wwPDB partial adaption of 1.1.7 (2018)
Percentile statistics : 20250101.v01 (using entries in the PDB archive January 1st 2025)
EM percentile statistics : 202505.v01 (Using data in the EMDB archive up until May 2025)
MapQ : 1.9.13
Ideal geometry (proteins) : Engh & Huber (2001)
Ideal geometry (DNA, RNA) : Parkinson et al. (1996)
Validation Pipeline (wwPDB-VP) : 2.49

1 Overall quality at a glance

The following experimental techniques were used to determine the structure:
ELECTRON MICROSCOPY

The reported resolution of this entry is 2.60 Å.

Percentile scores (ranging between 0-100) for global validation metrics of the entry are shown in the following graphic. The table shows the number of entries on which the scores are based.











Metric	Whole archive (#Entries)	EM structures (#Entries)	Similar EM resolution (#Entries, resolution range(Å))
Clashscore	229148	23984	-
Ramachandran outliers	224038	23583	-
Sidechain outliers	223484	23102	-
Q-score	-	25397	8728 (2.10 - 3.10)

The table below summarises the geometric issues observed across the polymeric chains and their fit to the map. The red, orange, yellow and green segments of the bar indicate the fraction of residues that contain outliers for ≥ 3 , 2, 1 and 0 types of geometric quality criteria respectively. A grey segment represents the fraction of residues that are not modelled. The numeric value for each fraction is indicated below the corresponding segment, with a dot representing fractions $\leq 5\%$. The upper red bar (where present) indicates the fraction of residues that have poor fit to the EM map (all-atom inclusion $< 40\%$). The numeric value is given above the bar.

Mol	Chain	Length	Quality of chain
1	A	140	28% 13% 59%
1	B	140	31% 9% 59%
1	C	140	29% 11% 59%
1	D	140	30% 11% 59%

Continued on next page...

Continued from previous page...

Mol	Chain	Length	Quality of chain
1	E	140	 30% 11% 59%
1	F	140	 29% 12% 59%
1	G	140	 28% 13% 59%
1	H	140	 31% 10% 59%
1	I	140	 30% 11% 59%
1	J	140	 29% 12% 59%
1	K	140	 32% 9% 59%
1	L	140	 29% 11% 59%

2 Entry composition

There are 2 unique types of molecules in this entry. The entry contains 5016 atoms, of which 0 are hydrogens and 0 are deuteriums.

In the tables below, the AltConf column contains the number of residues with at least one atom in alternate conformation and the Trace column contains the number of residues modelled with at most 2 atoms.

- Molecule 1 is a protein called Alpha-synuclein.

Mol	Chain	Residues	Atoms				AltConf	Trace
1	A	57	Total	C	N	O	0	0
			389	243	67	79		
1	D	57	Total	C	N	O	0	0
			389	243	67	79		
1	E	57	Total	C	N	O	0	0
			389	243	67	79		
1	F	57	Total	C	N	O	0	0
			389	243	67	79		
1	B	57	Total	C	N	O	0	0
			389	243	67	79		
1	C	57	Total	C	N	O	0	0
			389	243	67	79		
1	G	57	Total	C	N	O	0	0
			389	243	67	79		
1	J	57	Total	C	N	O	0	0
			389	243	67	79		
1	K	57	Total	C	N	O	0	0
			389	243	67	79		
1	L	57	Total	C	N	O	0	0
			389	243	67	79		
1	H	57	Total	C	N	O	0	0
			389	243	67	79		
1	I	57	Total	C	N	O	0	0
			389	243	67	79		

- Molecule 2 is 2',4',5',7'-tetrakis(iodanyl)-3',6'-bis(oxidanyl)spiro[2-benzofuran-3,9'-xanthene]-1-one (CCD ID: A1EPA) (formula: C₂₀H₈I₄O₅) (labeled as "Ligand of Interest" by depositor).

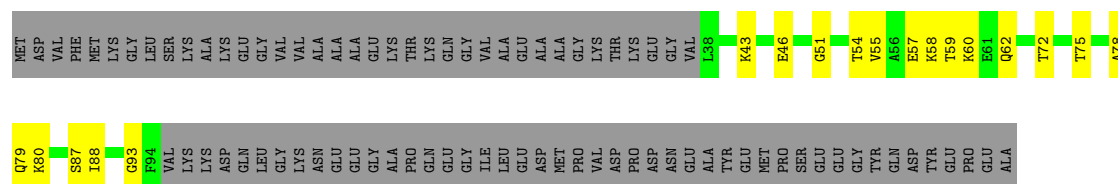


3 Residue-property plots [i](#)

These plots are drawn for all protein, RNA, DNA and oligosaccharide chains in the entry. The first graphic for a chain summarises the proportions of the various outlier classes displayed in the second graphic. The second graphic shows the sequence view annotated by issues in geometry and atom inclusion in map density. Residues are color-coded according to the number of geometric quality criteria for which they contain at least one outlier: green = 0, yellow = 1, orange = 2 and red = 3 or more. A red diamond above a residue indicates a poor fit to the EM map for this residue (all-atom inclusion < 40%). Stretches of 2 or more consecutive residues without any outlier are shown as a green connector. Residues present in the sample, but not in the model, are shown in grey.

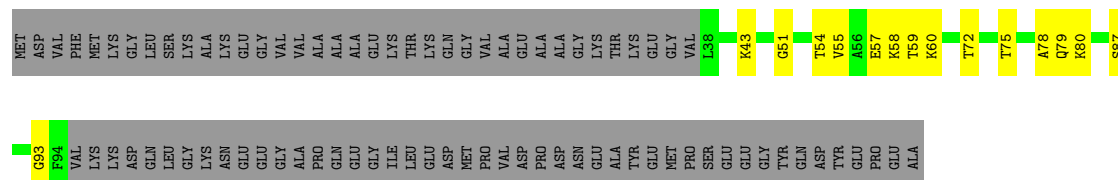
• Molecule 1: Alpha-synuclein

Chain A: 



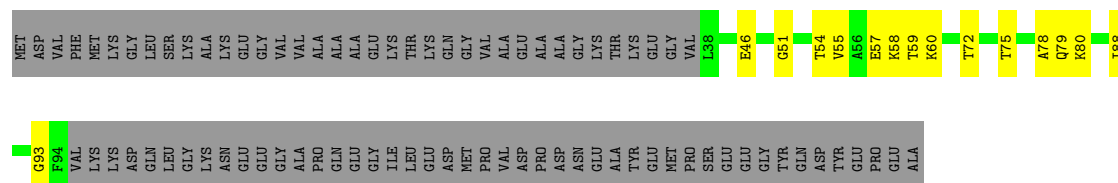
• Molecule 1: Alpha-synuclein

Chain D: 



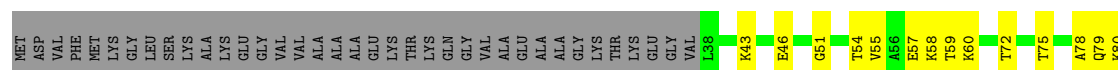
• Molecule 1: Alpha-synuclein

Chain E: 



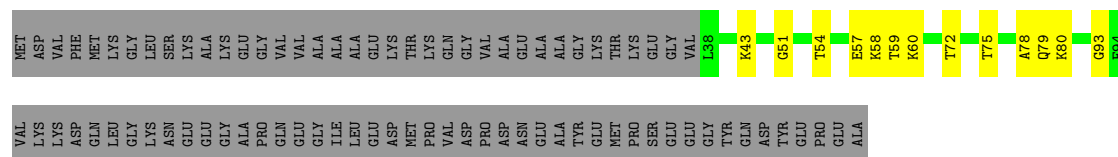
• Molecule 1: Alpha-synuclein

Chain F: 



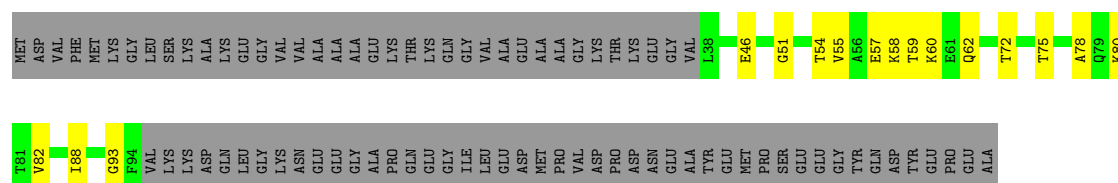
- Molecule 1: Alpha-synuclein

Chain B: 31% 9% 59%



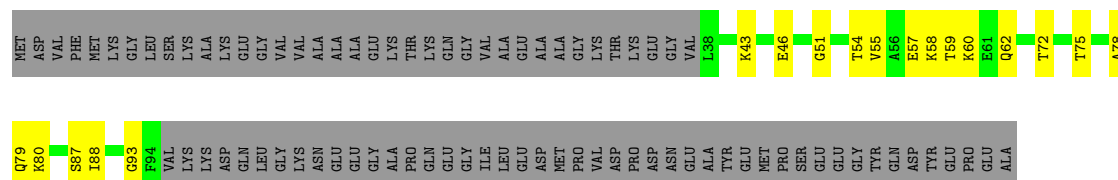
- Molecule 1: Alpha-synuclein

Chain C:  29% 11% 59%



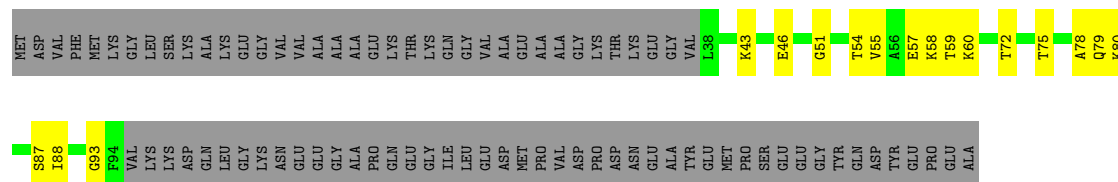
- Molecule 1: Alpha-synuclein

Chain G:  28% 13% 59%



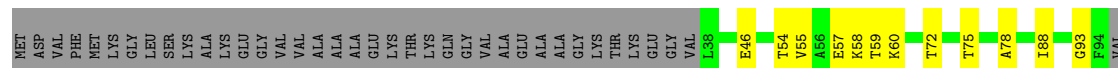
- Molecule 1: Alpha-synuclein

Chain J: 29% 12% 59%



- Molecule 1: Alpha-synuclein

Chain K:  32% 9% 59%



LYS
LYS
ASP
GLN
LEU
GLY
LYS
ASN
GLU
SER
GLY
GLY
ALA
PRO
GLN
GLU
GLY
ILE
ALA
LEU
GLU
ASP
MET
GLY
THR
PRO
VAL
LEU
ASP
PRO
ASP
ASN
GLU
PRO
ALA
TYR
GLY
MET
PRO
SER
GLY
GLU
GLY
GLY
TYR
GLN
ASP
TYR
GLY
PRO
GLU
ALA

● Molecule 1: Alpha-synuclein



MET
ASP
VAL
PHE
MET
LYS
GLY
LEU
SER
GLY
ALA
LYS
GLY
GLU
VAL
VAL
GLY
ALA
ALA
ALA
GLU
GLY
LYS
THR
LYS
GLY
LEU
GLN
GLY
VAL
VAL
L38
K43
E46
G51
T54
V55
A56
E57
K58
T59
K60
T72
T75
A78
Q79
K80

T81
V82
G93
F94
VAL
LYS
ASP
GLN
LEU
LYS
GLY
ASN
GLU
GLY
VAL
ALA
PRO
GLN
GLY
LYS
THR
LYS
ILE
LEU
GLN
ASP
GLY
VAL
MET
PRO
VAL
ALA
ASP
PRO
ALA
ASP
ASN
GLY
LYS
THR
LYS
GLY
GLU
MET
TYR
GLY
VAL
MET
PRO
SER
GLU
GLY
TYR
GLN
ASP
TYR
GLU
PRO
GLU
ALA

● Molecule 1: Alpha-synuclein



MET
ASP
VAL
PHE
MET
LYS
GLY
LEU
SER
GLY
ALA
LYS
GLY
GLU
VAL
VAL
GLY
ALA
PRO
GLN
GLY
LYS
THR
LYS
ILE
LEU
GLN
ASP
GLY
VAL
MET
PRO
VAL
ALA
ASP
PRO
ALA
ASP
ASN
GLY
LYS
THR
LYS
GLY
GLU
MET
TYR
GLY
VAL
MET
PRO
SER
GLU
GLY
TYR
GLN
ASP
TYR
GLU
PRO
GLU
ALA

G93
F94
VAL
LYS
ASP
GLN
LEU
LYS
GLY
ASN
GLU
GLY
VAL
ALA
PRO
GLN
GLY
LYS
THR
LYS
ILE
LEU
GLN
ASP
GLY
VAL
MET
PRO
VAL
ALA
ASP
PRO
ALA
ASP
ASN
GLY
LYS
THR
LYS
GLY
GLU
MET
TYR
GLY
VAL
MET
PRO
SER
GLU
GLY
TYR
GLN
ASP
TYR
GLU
PRO
GLU
ALA

● Molecule 1: Alpha-synuclein



MET
ASP
VAL
PHE
MET
LYS
GLY
LEU
SER
GLY
ALA
LYS
GLY
GLU
VAL
VAL
GLY
ALA
PRO
GLN
GLY
LYS
THR
LYS
ILE
LEU
GLN
ASP
GLY
VAL
MET
PRO
VAL
ALA
ASP
PRO
ALA
ASP
ASN
GLY
LYS
THR
LYS
GLY
GLU
MET
TYR
GLY
VAL
MET
PRO
SER
GLU
GLY
TYR
GLN
ASP
TYR
GLU
PRO
GLU
ALA

I68
G93
F94
VAL
LYS
LYS
ASP
GLN
LEU
LYS
GLY
ASN
GLU
GLY
VAL
ALA
ALA
ALA
GLU
GLY
LYS
THR
LYS
ILE
LEU
GLN
ASP
GLY
VAL
MET
PRO
VAL
ALA
ASP
PRO
ALA
ASP
ASN
GLY
LYS
THR
LYS
GLY
GLU
MET
TYR
GLY
VAL
MET
PRO
SER
GLU
GLY
TYR
GLN
ASP
TYR
GLU
PRO
GLU
ALA

4 Experimental information

Property	Value	Source
EM reconstruction method	HELICAL	Depositor
Imposed symmetry	HELICAL, twist=179.46°, rise=2.41 Å, axial sym=C1	Depositor
Number of segments used	49647	Depositor
Resolution determination method	FSC 0.143 CUT-OFF	Depositor
CTF correction method	NONE	Depositor
Microscope	TFS KRIOS	Depositor
Voltage (kV)	300	Depositor
Electron dose ($e^-/\text{Å}^2$)	55	Depositor
Minimum defocus (nm)	1000	Depositor
Maximum defocus (nm)	2000	Depositor
Magnification	Not provided	
Image detector	GATAN K3 BIOQUANTUM (6k x 4k)	Depositor
Maximum map value	0.135	Depositor
Minimum map value	-0.067	Depositor
Average map value	0.000	Depositor
Map value standard deviation	0.005	Depositor
Recommended contour level	0.012	Depositor
Map size (Å)	298.8, 298.8, 298.8	wwPDB
Map dimensions	360, 360, 360	wwPDB
Map angles (°)	90.0, 90.0, 90.0	wwPDB
Pixel spacing (Å)	0.83, 0.83, 0.83	Depositor

5 Model quality [i](#)

5.1 Standard geometry [i](#)

Bond lengths and bond angles in the following residue types are not validated in this section: A1EPA

The Z score for a bond length (or angle) is the number of standard deviations the observed value is removed from the expected value. A bond length (or angle) with $|Z| > 5$ is considered an outlier worth inspection. RMSZ is the root-mean-square of all Z scores of the bond lengths (or angles).

Mol	Chain	Bond lengths		Bond angles	
		RMSZ	# Z >5	RMSZ	# Z >5
1	A	0.18	0/391	0.42	0/530
1	B	0.18	0/391	0.42	0/530
1	C	0.17	0/391	0.42	0/530
1	D	0.18	0/391	0.42	0/530
1	E	0.18	0/391	0.42	0/530
1	F	0.18	0/391	0.42	0/530
1	G	0.18	0/391	0.42	0/530
1	H	0.18	0/391	0.42	0/530
1	I	0.18	0/391	0.42	0/530
1	J	0.18	0/391	0.42	0/530
1	K	0.18	0/391	0.42	0/530
1	L	0.18	0/391	0.42	0/530
All	All	0.18	0/4692	0.42	0/6360

There are no bond length outliers.

There are no bond angle outliers.

There are no chirality outliers.

There are no planarity outliers.

5.2 Too-close contacts [i](#)

In the following table, the Non-H and H(model) columns list the number of non-hydrogen atoms and hydrogen atoms in the chain respectively. The H(added) column lists the number of hydrogen atoms added and optimized by MolProbity. The Clashes column lists the number of clashes within the asymmetric unit, whereas Symm-Clashes lists symmetry-related clashes.

Mol	Chain	Non-H	H(model)	H(added)	Clashes	Symm-Clashes
1	A	389	0	403	24	0

Continued on next page...

Continued from previous page...

Mol	Chain	Non-H	H(model)	H(added)	Clashes	Symm-Clashes
1	B	389	0	403	13	0
1	C	389	0	403	22	0
1	D	389	0	403	15	0
1	E	389	0	403	21	0
1	F	389	0	403	23	0
1	G	389	0	403	24	0
1	H	389	0	403	20	0
1	I	389	0	403	15	0
1	J	389	0	403	23	0
1	K	389	0	403	12	0
1	L	389	0	403	22	0
2	A	87	0	0	6	0
2	C	58	0	0	3	0
2	F	29	0	0	3	0
2	G	87	0	0	6	0
2	I	58	0	0	3	0
2	L	29	0	0	3	0
All	All	5016	0	4836	147	0

The all-atom clashscore is defined as the number of clashes found per 1000 atoms (including hydrogen atoms). The all-atom clashscore for this structure is 15.

The worst 5 of 147 close contacts within the same asymmetric unit are listed below, sorted by their clash magnitude.

Atom-1	Atom-2	Interatomic distance (Å)	Clash overlap (Å)
2:A:203:A1EPA:I14	2:G:203:A1EPA:I25	3.33	0.87
2:C:202:A1EPA:I14	2:I:202:A1EPA:I25	3.33	0.87
2:C:201:A1EPA:I25	2:I:201:A1EPA:I14	3.34	0.85
2:F:201:A1EPA:I14	2:L:201:A1EPA:I25	3.35	0.85
2:A:201:A1EPA:I14	2:G:201:A1EPA:I25	3.34	0.85

There are no symmetry-related clashes.

5.3 Torsion angles [i](#)

5.3.1 Protein backbone [i](#)

In the following table, the Percentiles column shows the percent Ramachandran outliers of the chain as a percentile score with respect to all PDB entries followed by that with respect to all EM entries.

The Analysed column shows the number of residues for which the backbone conformation was analysed, and the total number of residues.

Mol	Chain	Analysed	Favoured	Allowed	Outliers	Percentiles	
1	A	55/140 (39%)	50 (91%)	5 (9%)	0	100	100
1	B	55/140 (39%)	50 (91%)	5 (9%)	0	100	100
1	C	55/140 (39%)	50 (91%)	5 (9%)	0	100	100
1	D	55/140 (39%)	50 (91%)	5 (9%)	0	100	100
1	E	55/140 (39%)	50 (91%)	5 (9%)	0	100	100
1	F	55/140 (39%)	50 (91%)	5 (9%)	0	100	100
1	G	55/140 (39%)	50 (91%)	5 (9%)	0	100	100
1	H	55/140 (39%)	50 (91%)	5 (9%)	0	100	100
1	I	55/140 (39%)	50 (91%)	5 (9%)	0	100	100
1	J	55/140 (39%)	50 (91%)	5 (9%)	0	100	100
1	K	55/140 (39%)	50 (91%)	5 (9%)	0	100	100
1	L	55/140 (39%)	50 (91%)	5 (9%)	0	100	100
All	All	660/1680 (39%)	600 (91%)	60 (9%)	0	100	100

There are no Ramachandran outliers to report.

5.3.2 Protein sidechains ⓘ

In the following table, the Percentiles column shows the percent sidechain outliers of the chain as a percentile score with respect to all PDB entries followed by that with respect to all EM entries.

The Analysed column shows the number of residues for which the sidechain conformation was analysed, and the total number of residues.

Mol	Chain	Analysed	Rotameric	Outliers	Percentiles	
1	A	39/103 (38%)	38 (97%)	1 (3%)	40	68
1	B	39/103 (38%)	38 (97%)	1 (3%)	40	68
1	C	39/103 (38%)	38 (97%)	1 (3%)	40	68
1	D	39/103 (38%)	38 (97%)	1 (3%)	40	68
1	E	39/103 (38%)	38 (97%)	1 (3%)	40	68
1	F	39/103 (38%)	38 (97%)	1 (3%)	40	68
1	G	39/103 (38%)	38 (97%)	1 (3%)	40	68

Continued on next page...

Continued from previous page...

Mol	Chain	Analysed	Rotameric	Outliers	Percentiles	
1	H	39/103 (38%)	38 (97%)	1 (3%)	40	68
1	I	39/103 (38%)	38 (97%)	1 (3%)	40	68
1	J	39/103 (38%)	38 (97%)	1 (3%)	40	68
1	K	39/103 (38%)	38 (97%)	1 (3%)	40	68
1	L	39/103 (38%)	38 (97%)	1 (3%)	40	68
All	All	468/1236 (38%)	456 (97%)	12 (3%)	41	68

5 of 12 residues with a non-rotameric sidechain are listed below:

Mol	Chain	Res	Type
1	J	60	LYS
1	K	60	LYS
1	I	60	LYS
1	L	60	LYS
1	F	60	LYS

Sometimes sidechains can be flipped to improve hydrogen bonding and reduce clashes. There are no such sidechains identified.

5.3.3 RNA ⓘ

There are no RNA molecules in this entry.

5.4 Non-standard residues in protein, DNA, RNA chains ⓘ

There are no non-standard protein/DNA/RNA residues in this entry.

5.5 Carbohydrates ⓘ

There are no oligosaccharides in this entry.

5.6 Ligand geometry ⓘ

12 ligands are modelled in this entry.

In the following table, the Counts columns list the number of bonds (or angles) for which Mogul statistics could be retrieved, the number of bonds (or angles) that are observed in the model and the number of bonds (or angles) that are defined in the Chemical Component Dictionary. The

Link column lists molecule types, if any, to which the group is linked. The Z score for a bond length (or angle) is the number of standard deviations the observed value is removed from the expected value. A bond length (or angle) with $|Z| > 2$ is considered an outlier worth inspection. RMSZ is the root-mean-square of all Z scores of the bond lengths (or angles).

Mol	Type	Chain	Res	Link	Bond lengths			Bond angles		
					Counts	RMSZ	# Z > 2	Counts	RMSZ	# Z > 2
2	A1EPA	G	201	-	33,33,33	1.93	12 (36%)	47,53,53	4.28	9 (19%)
2	A1EPA	F	201	-	33,33,33	1.92	12 (36%)	47,53,53	4.29	8 (17%)
2	A1EPA	I	202	-	33,33,33	1.92	12 (36%)	47,53,53	4.28	8 (17%)
2	A1EPA	G	202	-	33,33,33	1.92	11 (33%)	47,53,53	4.29	10 (21%)
2	A1EPA	A	203	-	33,33,33	1.92	12 (36%)	47,53,53	4.27	7 (14%)
2	A1EPA	G	203	-	33,33,33	1.92	12 (36%)	47,53,53	4.28	8 (17%)
2	A1EPA	A	202	-	33,33,33	1.93	12 (36%)	47,53,53	4.29	10 (21%)
2	A1EPA	C	201	-	33,33,33	1.93	12 (36%)	47,53,53	4.28	10 (21%)
2	A1EPA	C	202	-	33,33,33	1.92	12 (36%)	47,53,53	4.27	7 (14%)
2	A1EPA	I	201	-	33,33,33	1.93	12 (36%)	47,53,53	4.28	10 (21%)
2	A1EPA	L	201	-	33,33,33	1.92	12 (36%)	47,53,53	4.29	9 (19%)
2	A1EPA	A	201	-	33,33,33	1.93	12 (36%)	47,53,53	4.29	9 (19%)

In the following table, the Chirals column lists the number of chiral outliers, the number of chiral centers analysed, the number of these observed in the model and the number defined in the Chemical Component Dictionary. Similar counts are reported in the Torsion and Rings columns. '-' means no outliers of that kind were identified.

Mol	Type	Chain	Res	Link	Chirals	Torsions	Rings
2	A1EPA	G	201	-	-	-	0/5/5/5
2	A1EPA	F	201	-	-	-	0/5/5/5
2	A1EPA	I	202	-	-	-	0/5/5/5
2	A1EPA	G	202	-	-	-	0/5/5/5
2	A1EPA	A	203	-	-	-	0/5/5/5
2	A1EPA	G	203	-	-	-	0/5/5/5
2	A1EPA	A	202	-	-	-	0/5/5/5
2	A1EPA	C	201	-	-	-	0/5/5/5
2	A1EPA	C	202	-	-	-	0/5/5/5
2	A1EPA	I	201	-	-	-	0/5/5/5
2	A1EPA	L	201	-	-	-	0/5/5/5
2	A1EPA	A	201	-	-	-	0/5/5/5

The worst 5 of 143 bond length outliers are listed below:

Mol	Chain	Res	Type	Atoms	Z	Observed(Å)	Ideal(Å)
2	A	201	A1EPA	O20-C19	3.89	1.44	1.39
2	I	201	A1EPA	O20-C21	3.89	1.44	1.39
2	C	202	A1EPA	O20-C21	3.89	1.44	1.39
2	G	201	A1EPA	O20-C21	3.89	1.44	1.39
2	C	201	A1EPA	O20-C19	3.88	1.44	1.39

The worst 5 of 105 bond angle outliers are listed below:

Mol	Chain	Res	Type	Atoms	Z	Observed(°)	Ideal(°)
2	C	202	A1EPA	O10-C09-C11	-21.94	75.09	107.65
2	G	203	A1EPA	O10-C09-C11	-21.94	75.10	107.65
2	I	202	A1EPA	O10-C09-C11	-21.93	75.11	107.65
2	A	203	A1EPA	O10-C09-C11	-21.93	75.12	107.65
2	G	202	A1EPA	O10-C09-C11	-21.53	75.71	107.65

There are no chirality outliers.

There are no torsion outliers.

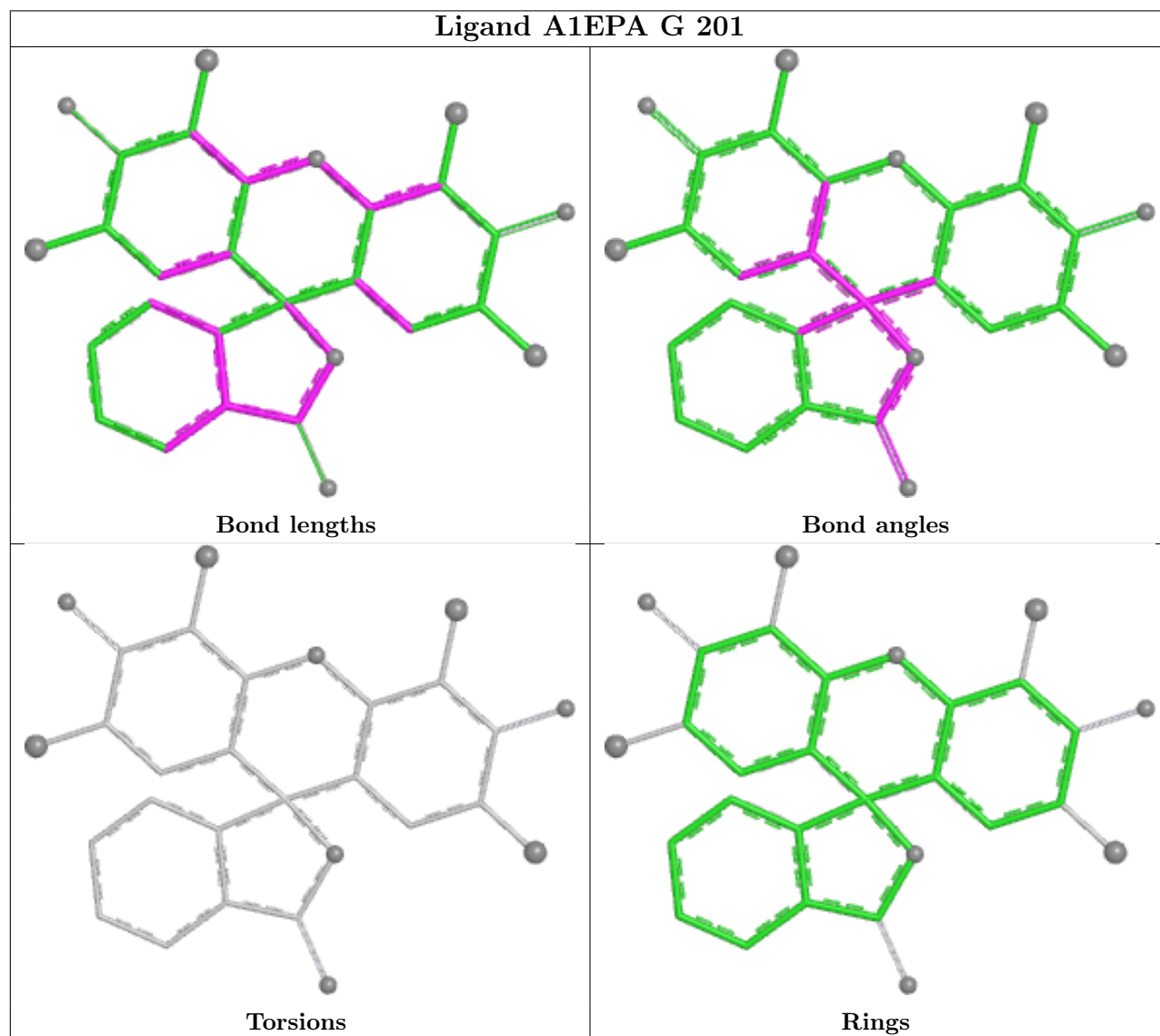
There are no ring outliers.

12 monomers are involved in 18 short contacts:

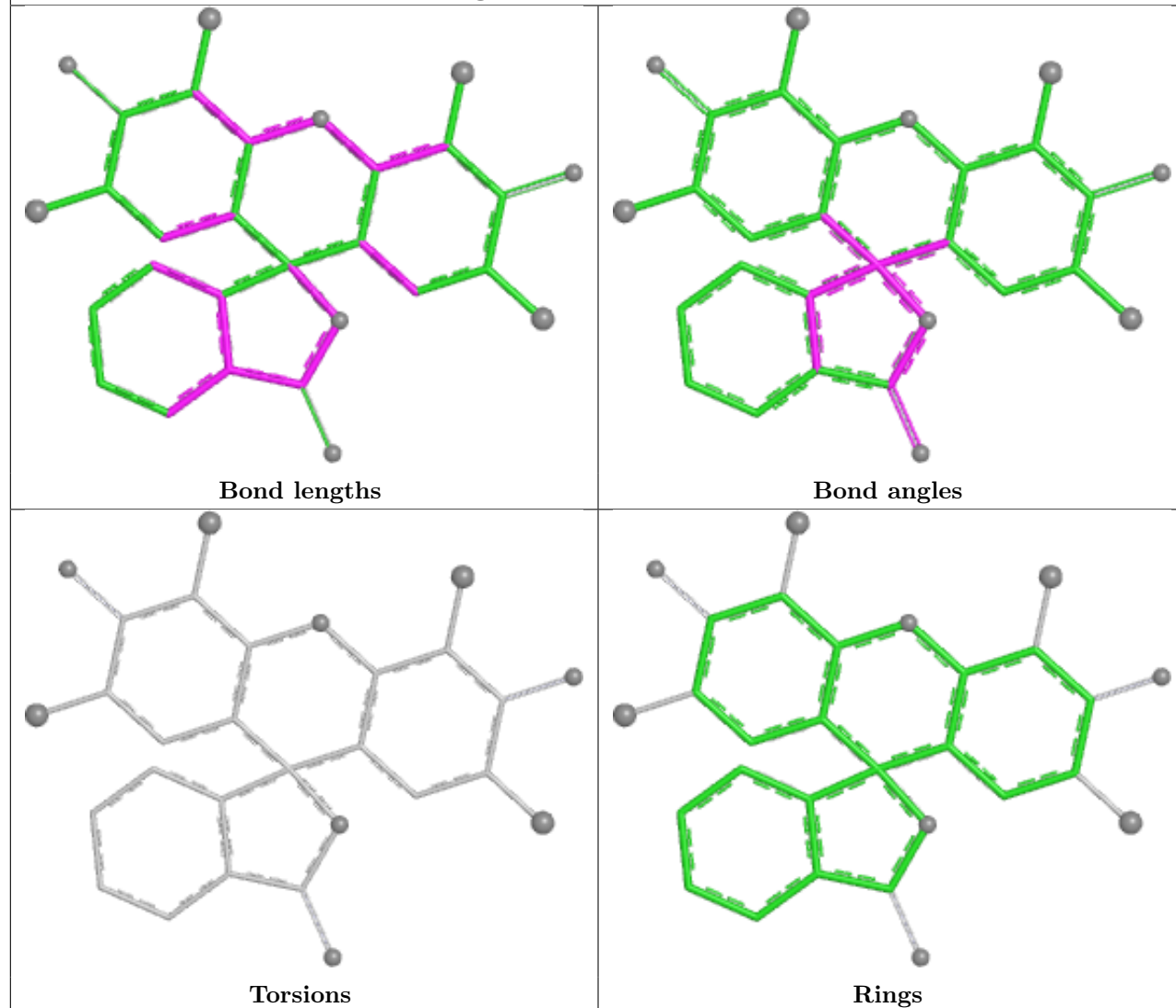
Mol	Chain	Res	Type	Clashes	Symm-Clashes
2	G	201	A1EPA	3	0
2	F	201	A1EPA	3	0
2	I	202	A1EPA	2	0
2	G	202	A1EPA	1	0
2	A	203	A1EPA	2	0
2	G	203	A1EPA	2	0
2	A	202	A1EPA	1	0
2	C	201	A1EPA	1	0
2	C	202	A1EPA	2	0
2	I	201	A1EPA	1	0
2	L	201	A1EPA	3	0
2	A	201	A1EPA	3	0

The following is a two-dimensional graphical depiction of Mogul quality analysis of bond lengths, bond angles, torsion angles, and ring geometry for all instances of the Ligand of Interest. In addition, ligands with molecular weight > 250 and outliers as shown on the validation Tables will also be included. For torsion angles, if less than 5% of the Mogul distribution of torsion angles is within 10 degrees of the torsion angle in question, then that torsion angle is considered an outlier. Any bond that is central to one or more torsion angles identified as an outlier by Mogul will be highlighted in the graph. For rings, the root-mean-square deviation (RMSD) between the ring in question and similar rings identified by Mogul is calculated over all ring torsion angles. If the

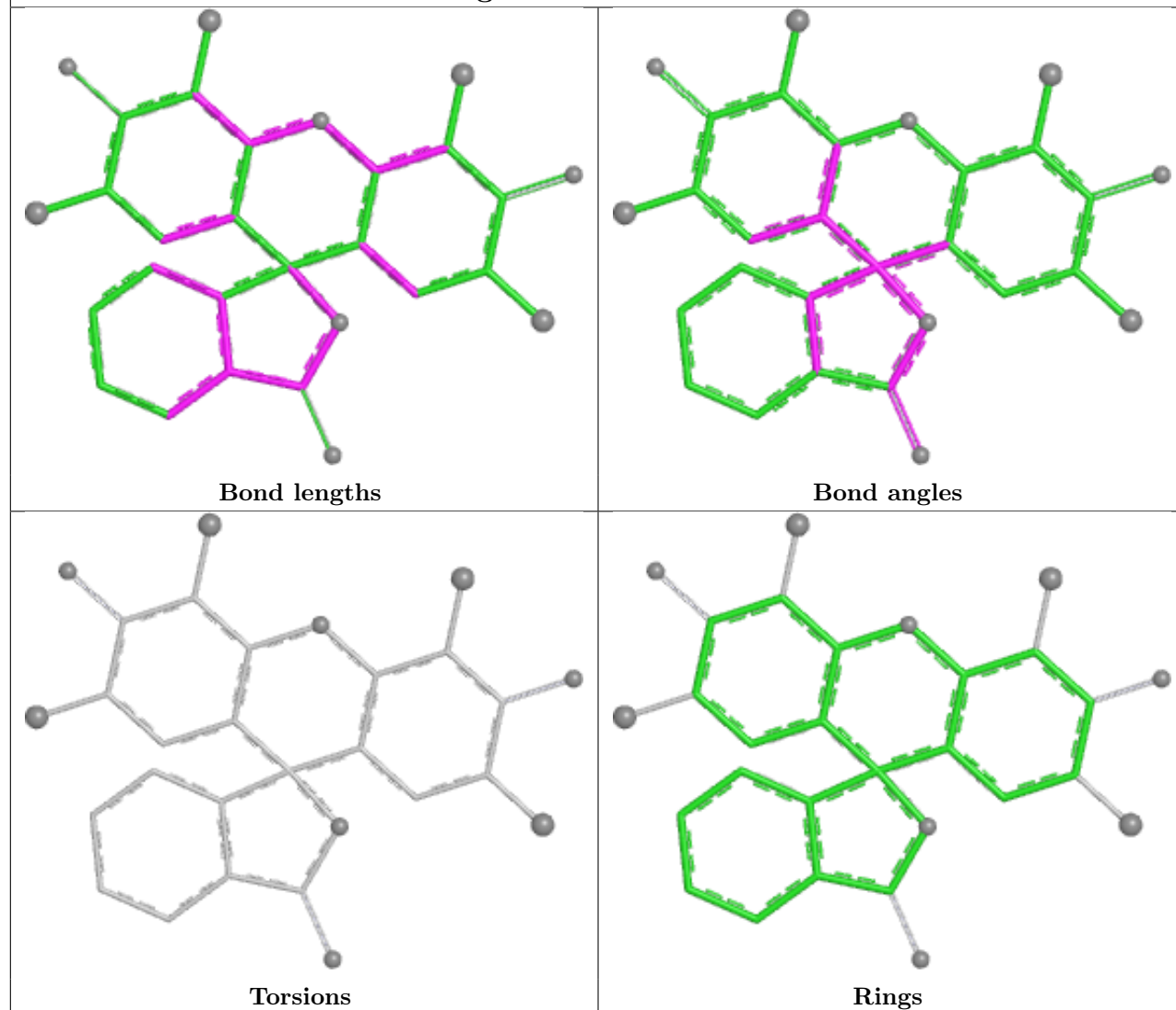
average RMSD is greater than 60 degrees and the minimal RMSD between the ring in question and any Mogul-identified rings is also greater than 60 degrees, then that ring is considered an outlier. The outliers are highlighted in purple. The color gray indicates Mogul did not find sufficient equivalents in the CSD to analyse the geometry.

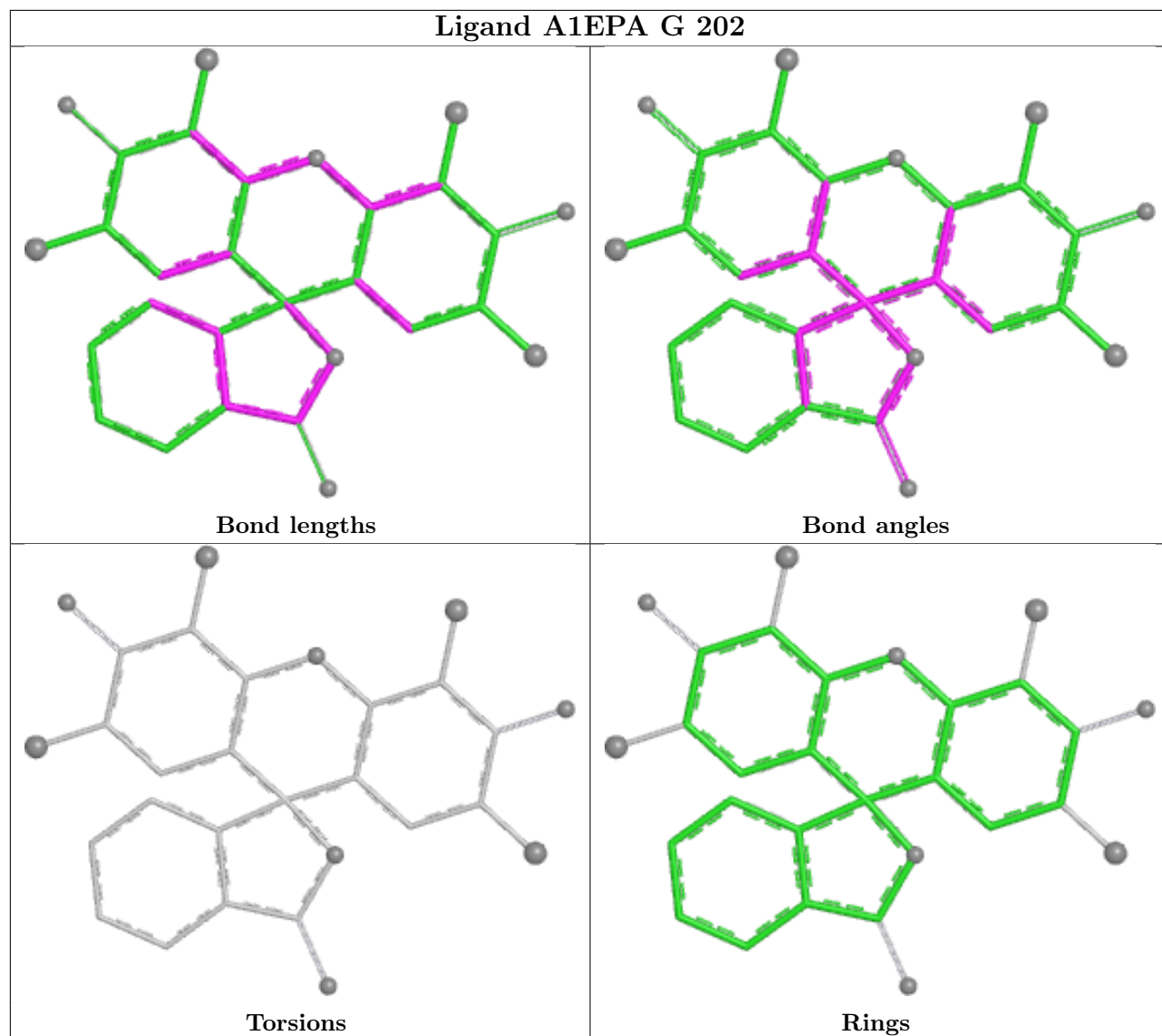


Ligand A1EPA F 201

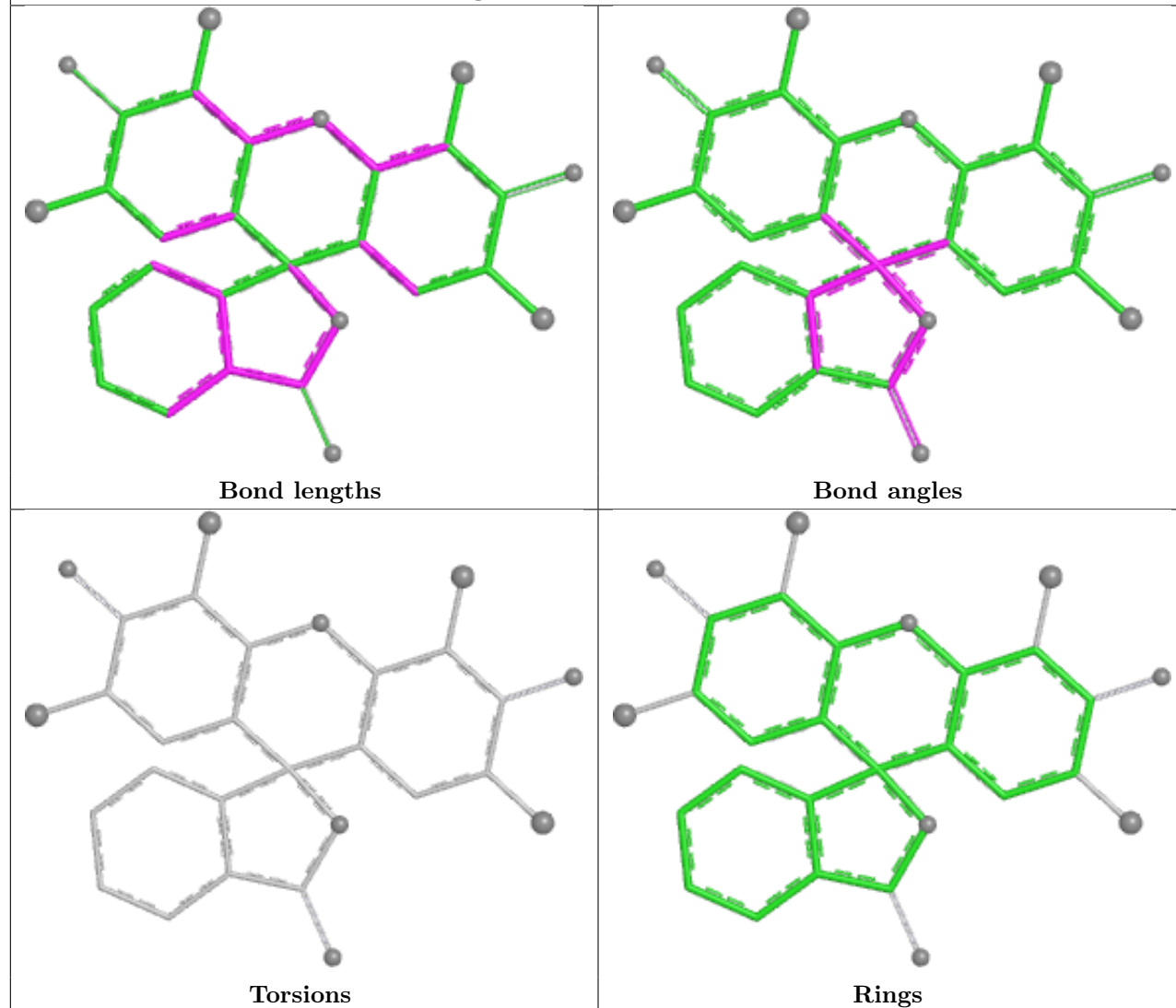


Ligand A1EPA I 202

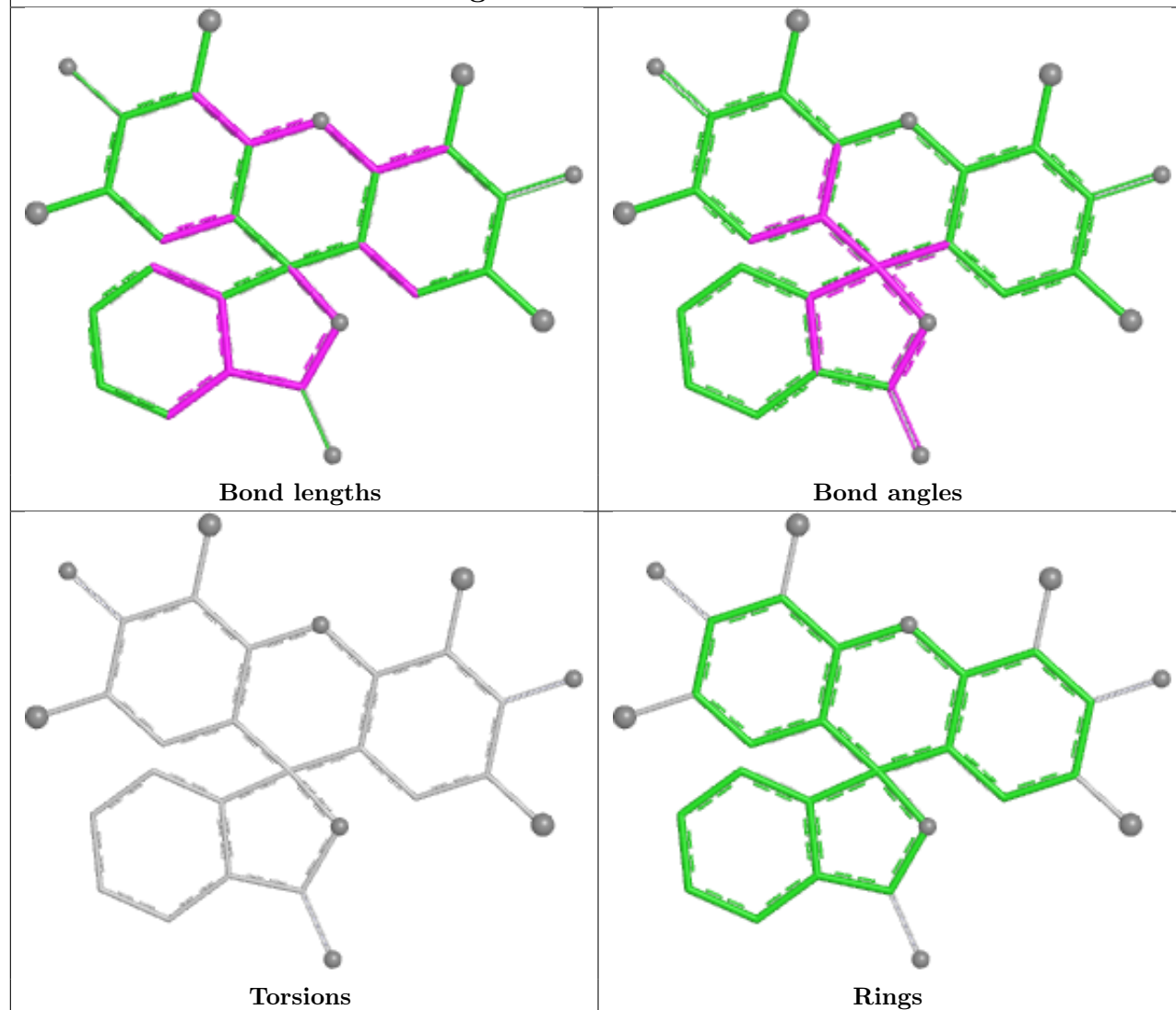




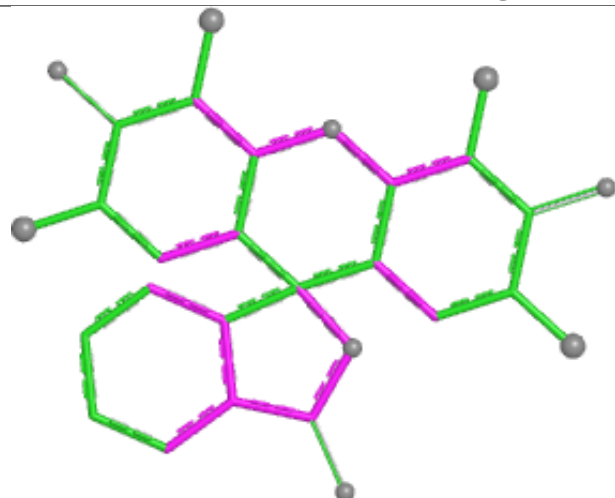
Ligand A1EPA A 203



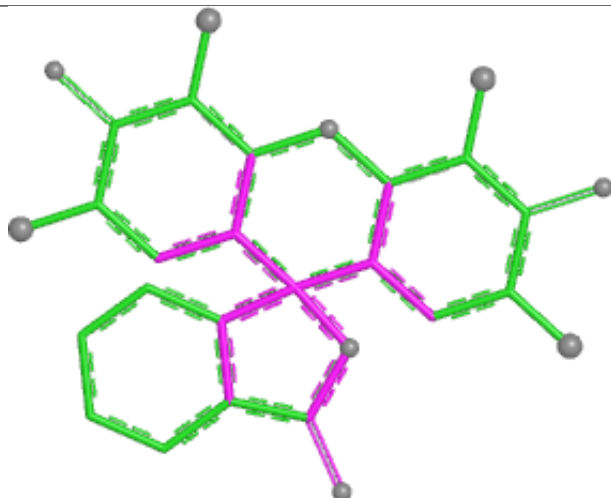
Ligand A1EPA G 203



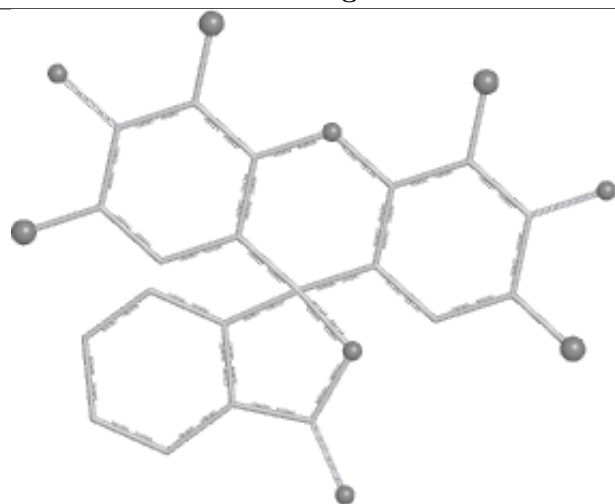
Ligand A1EPA A 202



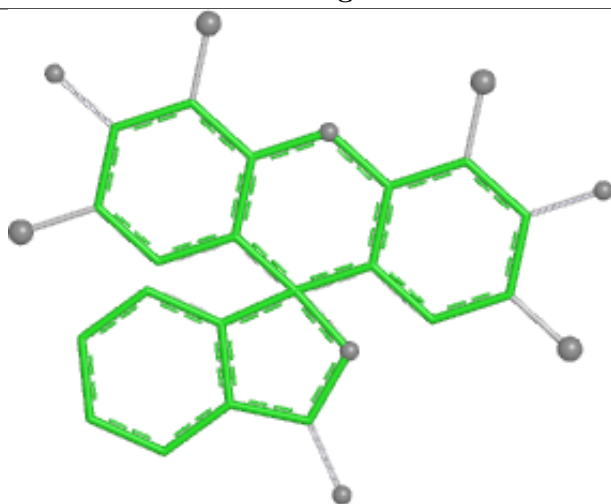
Bond lengths



Bond angles

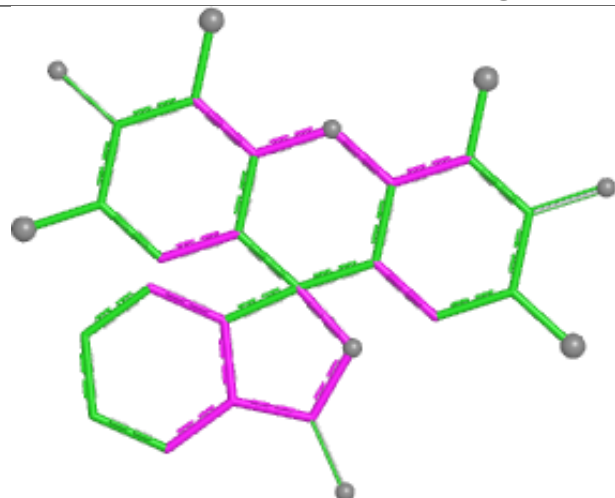


Torsions

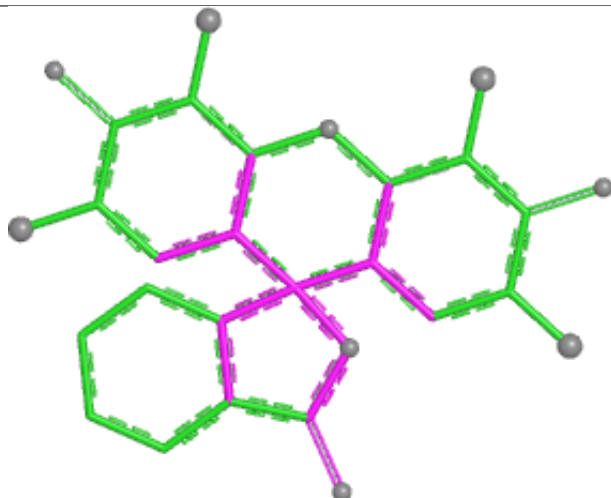


Rings

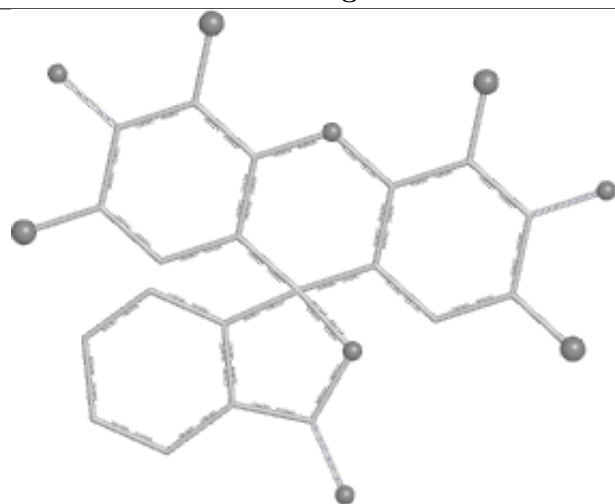
Ligand A1EPA C 201



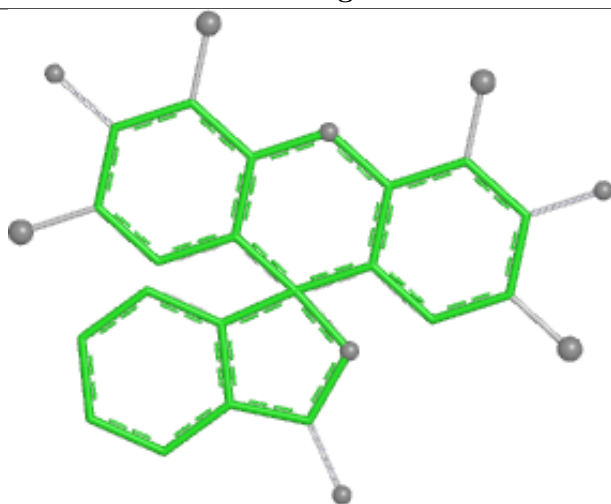
Bond lengths



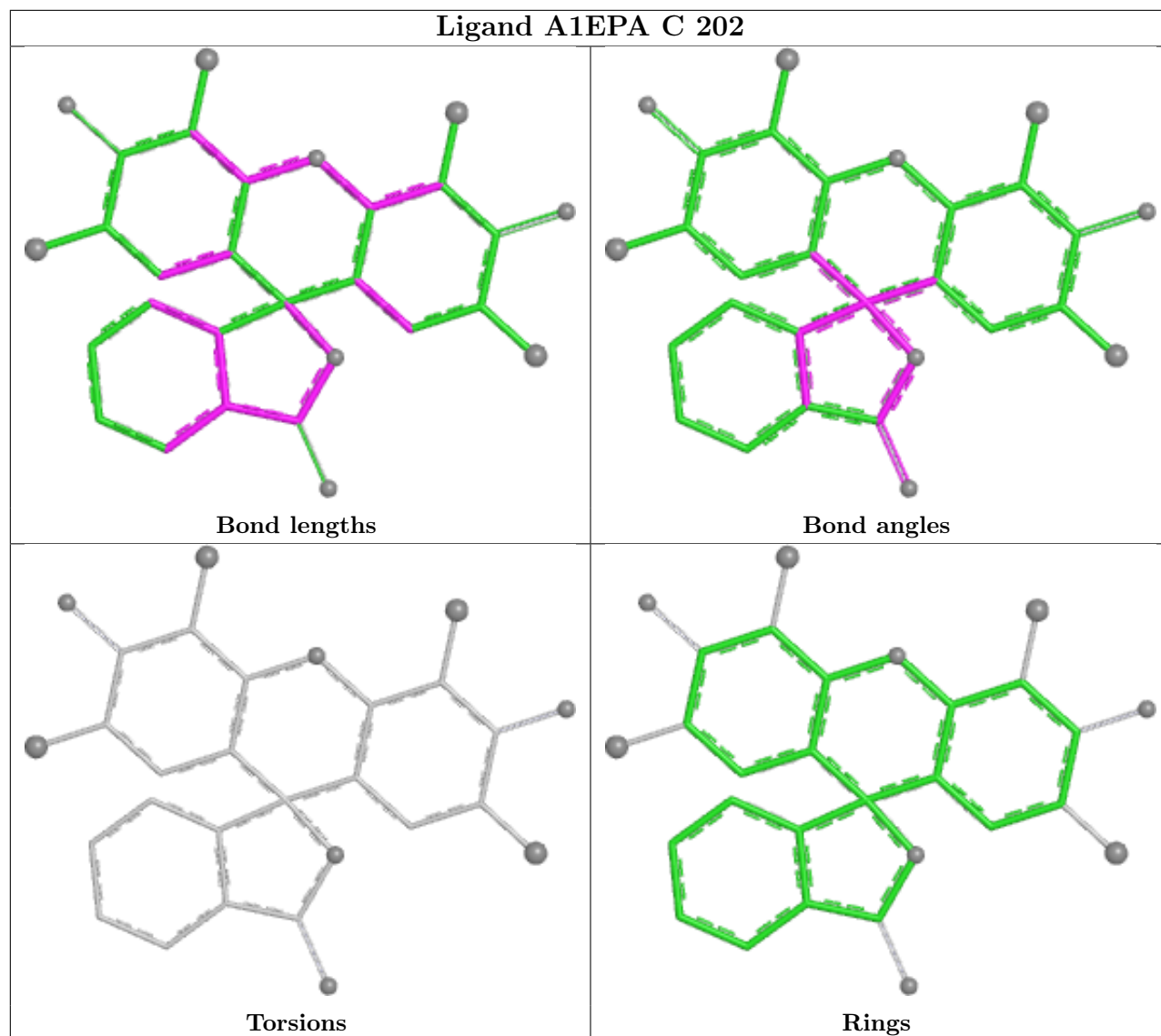
Bond angles



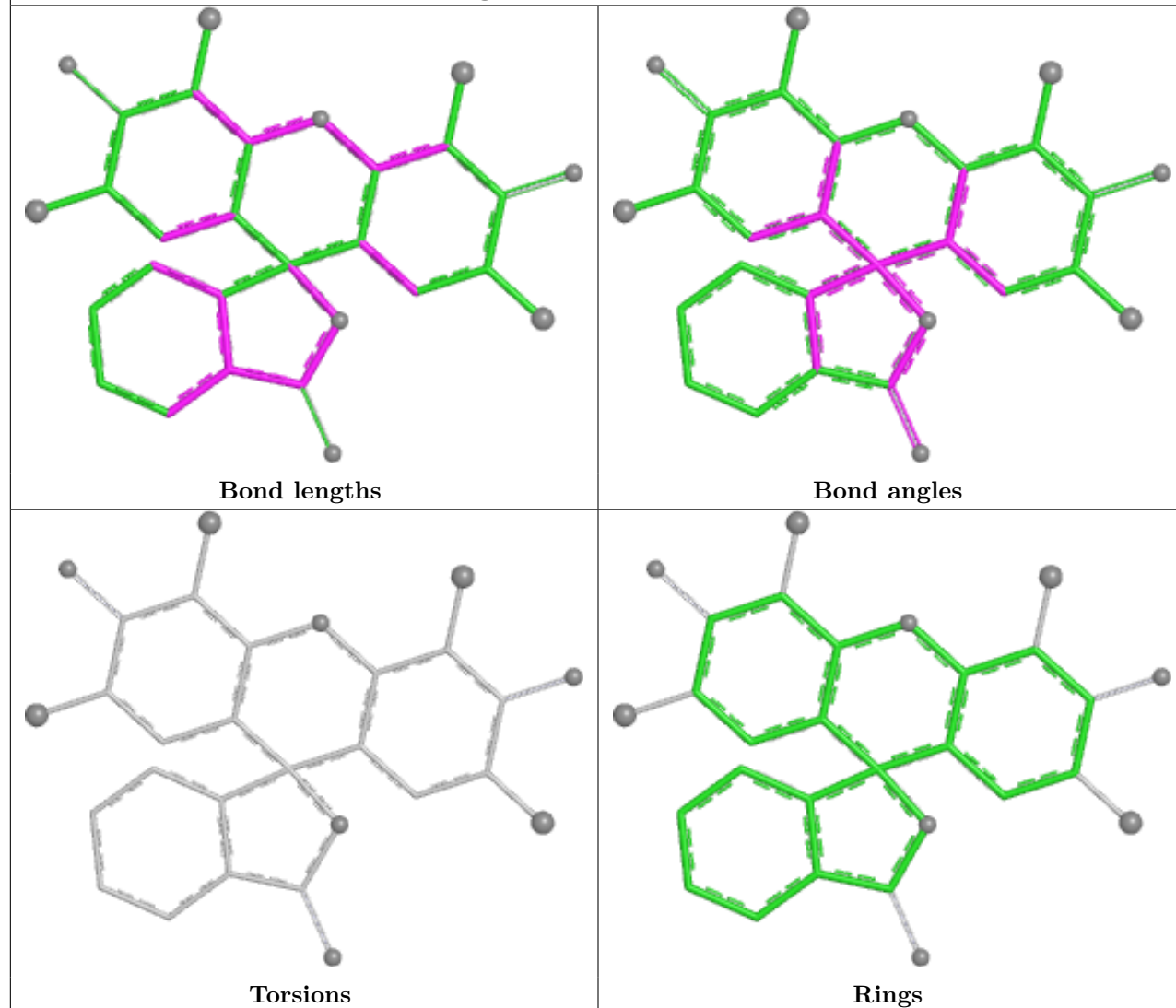
Torsions



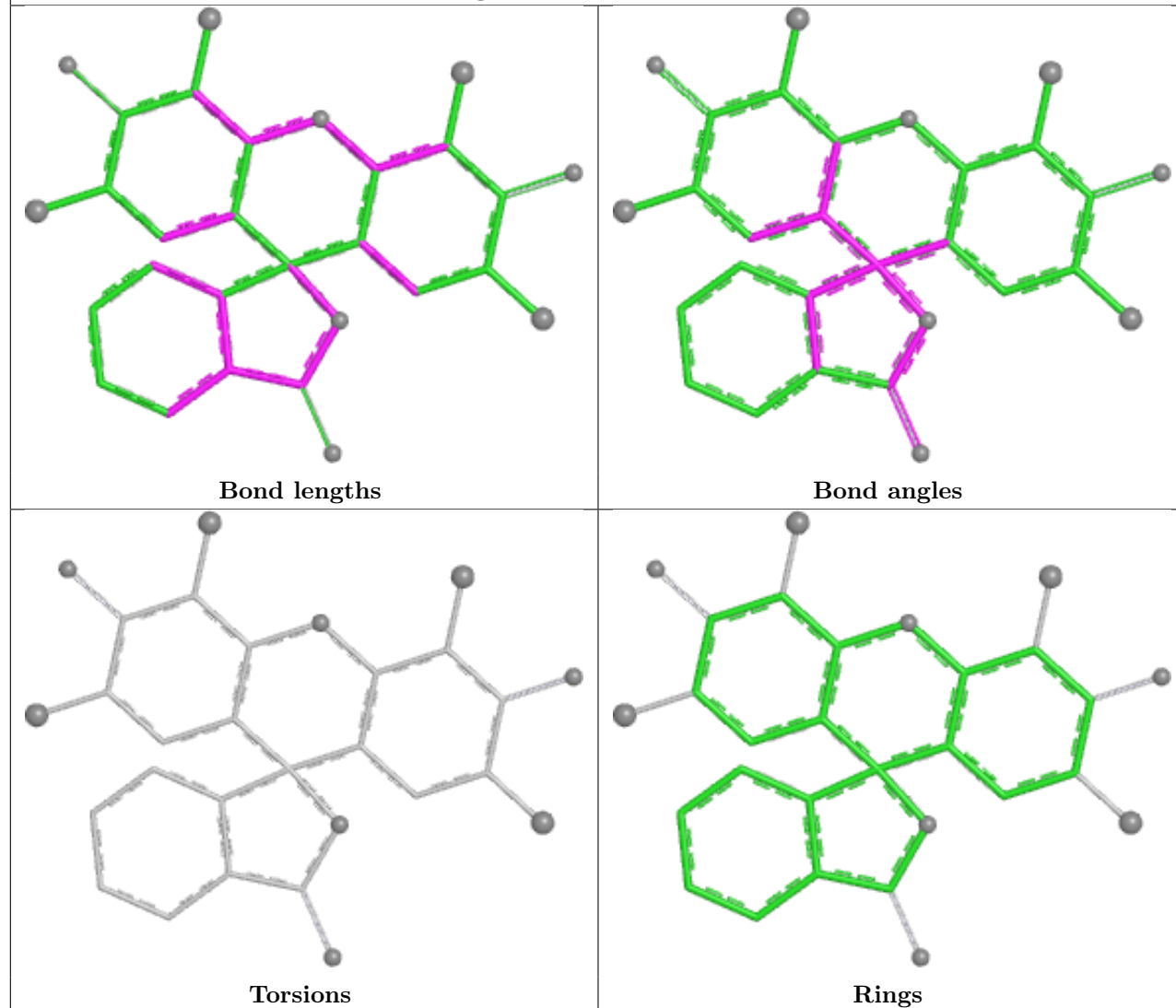
Rings

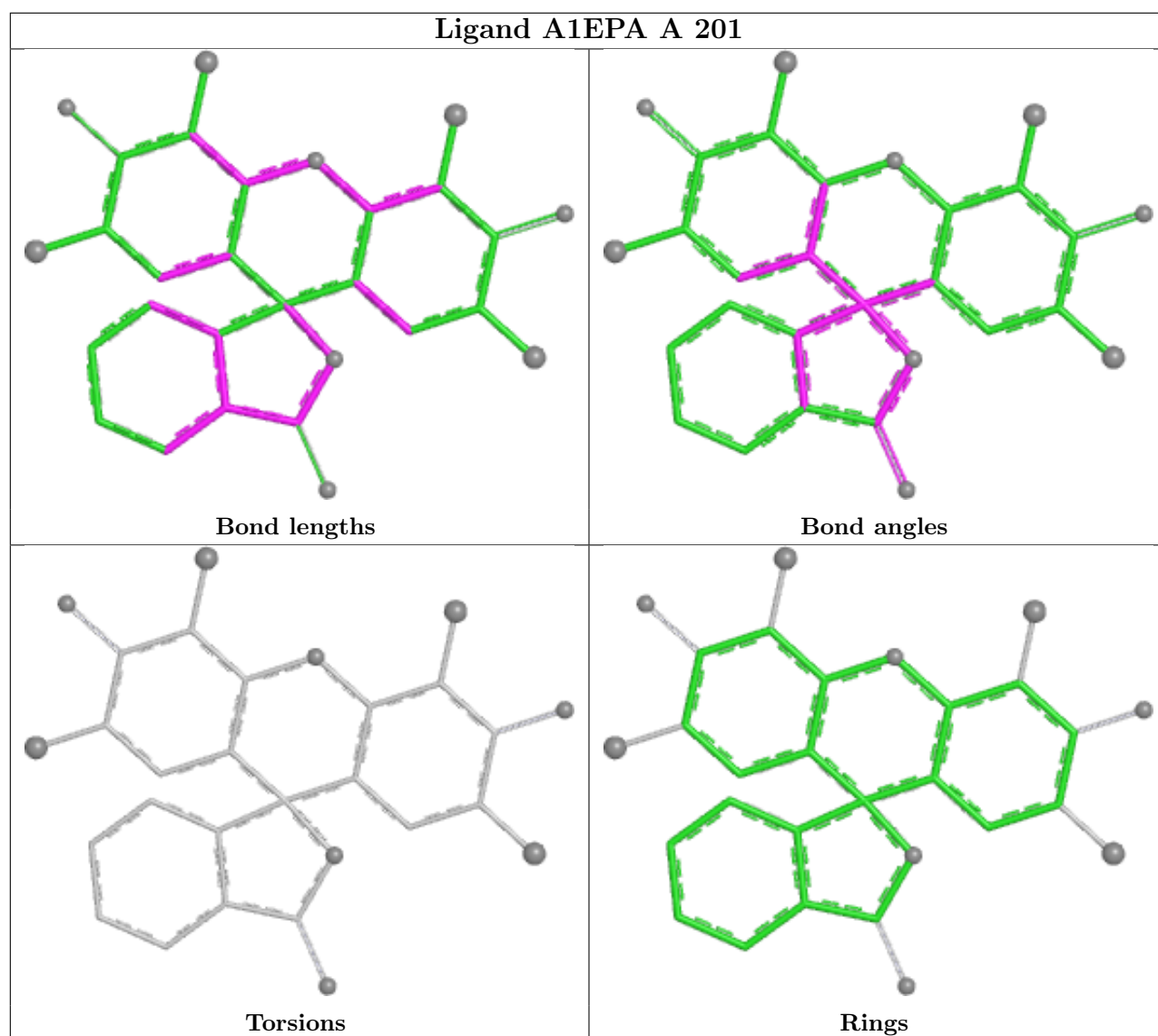


Ligand A1EPA I 201



Ligand A1EPA L 201





5.7 Other polymers [i](#)

There are no such residues in this entry.

5.8 Polymer linkage issues [i](#)

There are no chain breaks in this entry.

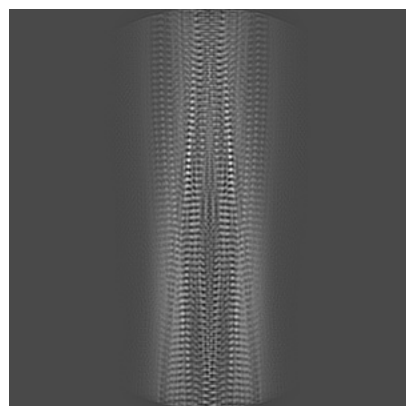
6 Map visualisation [i](#)

This section contains visualisations of the EMDB entry EMD-64125. These allow visual inspection of the internal detail of the map and identification of artifacts.

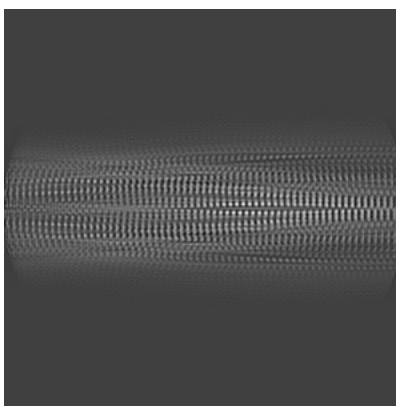
Images derived from a raw map, generated by summing the deposited half-maps, are presented below the corresponding image components of the primary map to allow further visual inspection and comparison with those of the primary map.

6.1 Orthogonal projections [i](#)

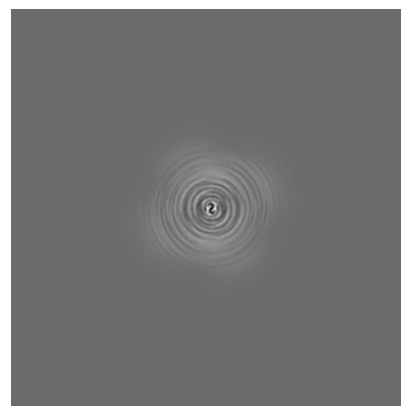
6.1.1 Primary map



X

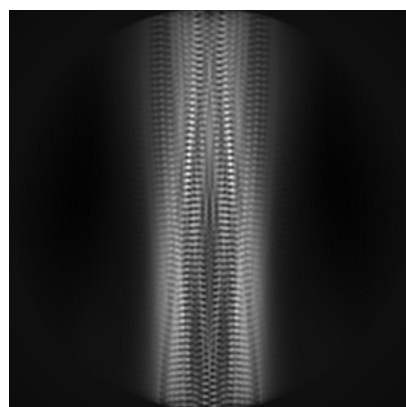


Y

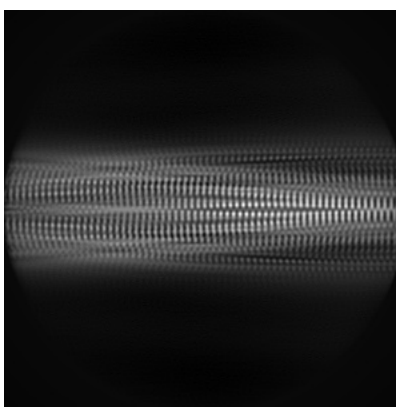


Z

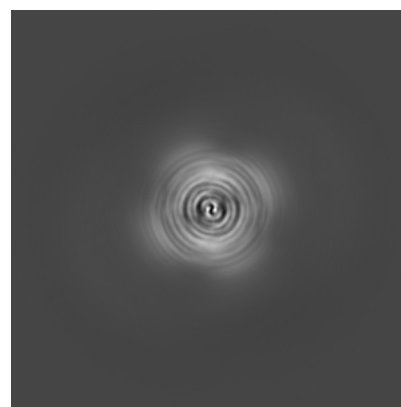
6.1.2 Raw map



X



Y

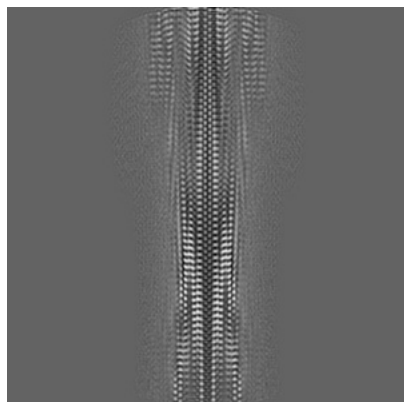


Z

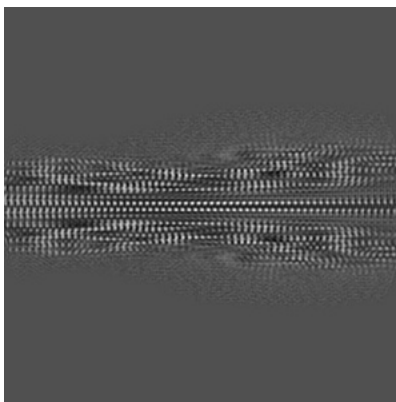
The images above show the map projected in three orthogonal directions.

6.2 Central slices [i](#)

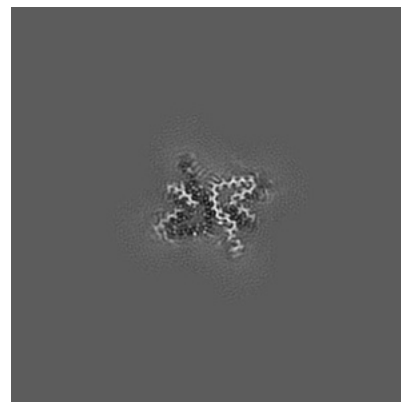
6.2.1 Primary map



X Index: 180

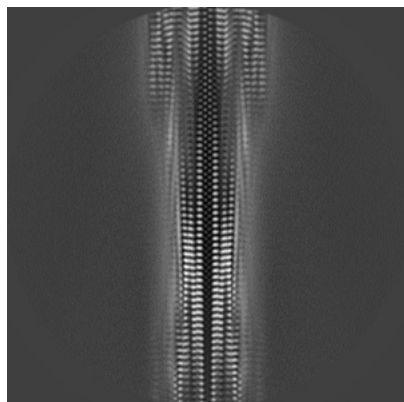


Y Index: 180

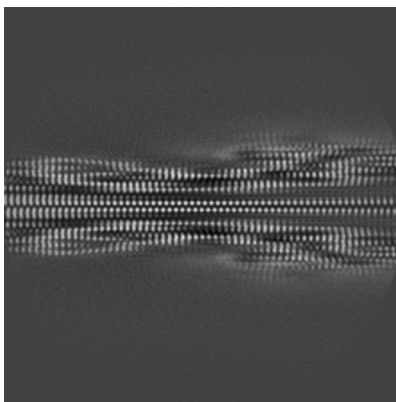


Z Index: 180

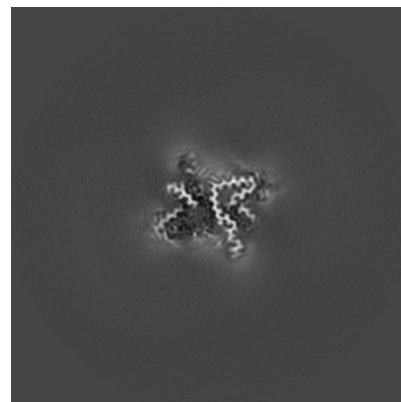
6.2.2 Raw map



X Index: 180



Y Index: 180

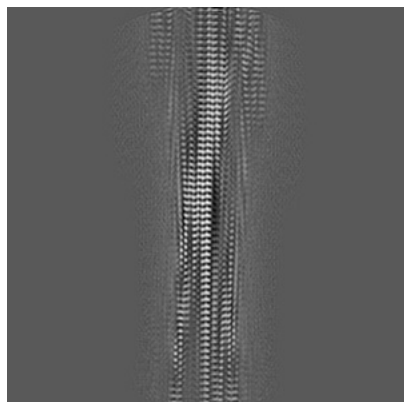


Z Index: 180

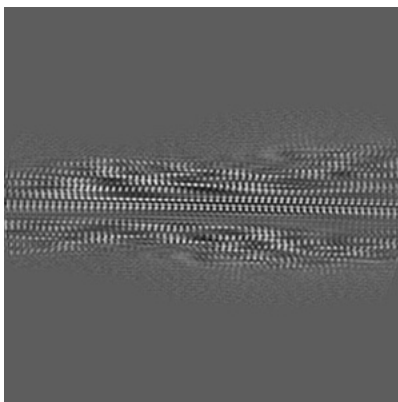
The images above show central slices of the map in three orthogonal directions.

6.3 Largest variance slices [i](#)

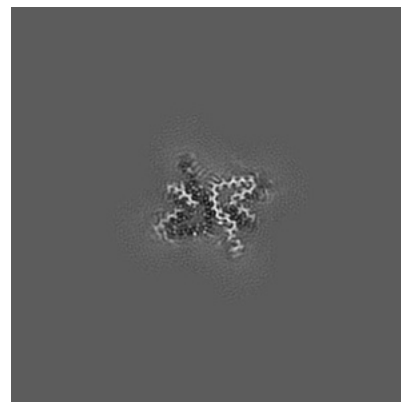
6.3.1 Primary map



X Index: 177

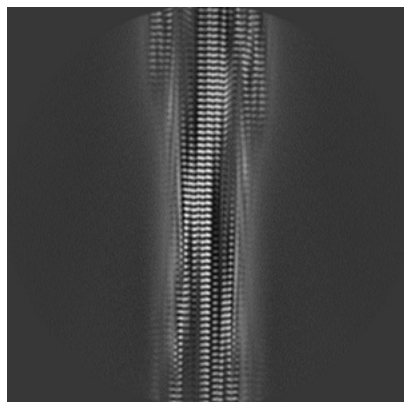


Y Index: 174

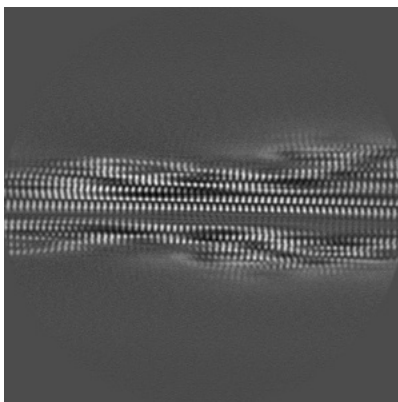


Z Index: 180

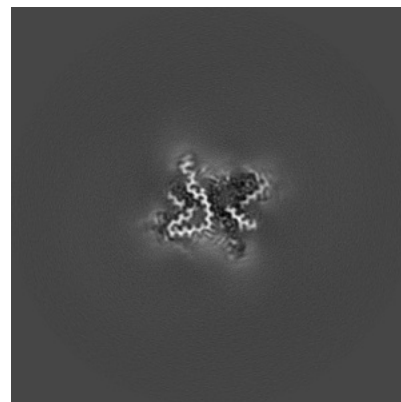
6.3.2 Raw map



X Index: 177



Y Index: 174

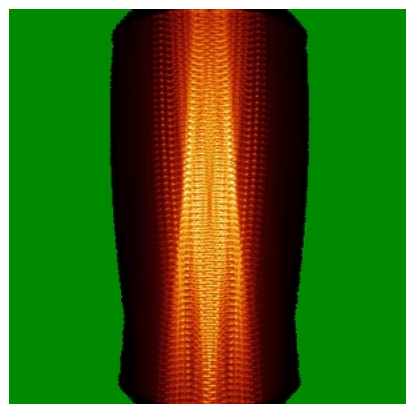


Z Index: 177

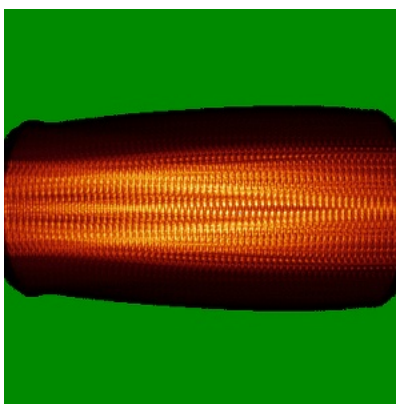
The images above show the largest variance slices of the map in three orthogonal directions.

6.4 Orthogonal standard-deviation projections (False-color) [i](#)

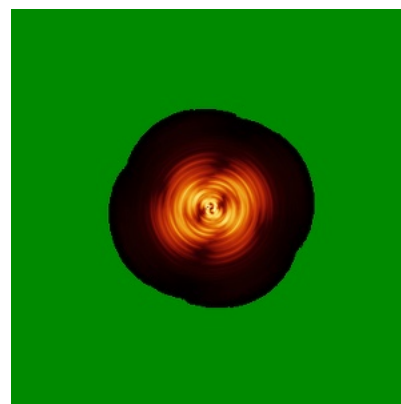
6.4.1 Primary map



X

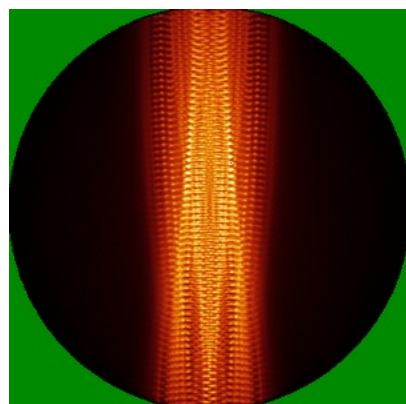


Y

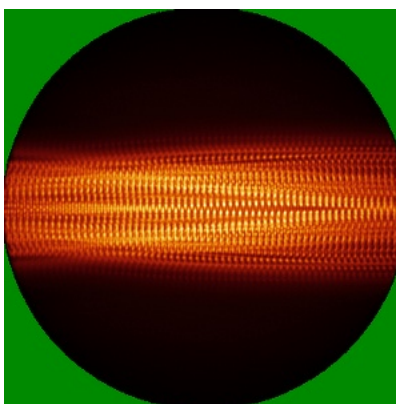


Z

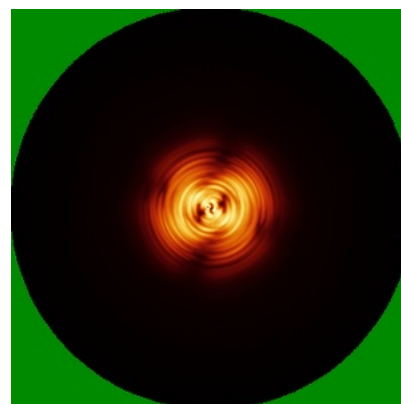
6.4.2 Raw map



X



Y

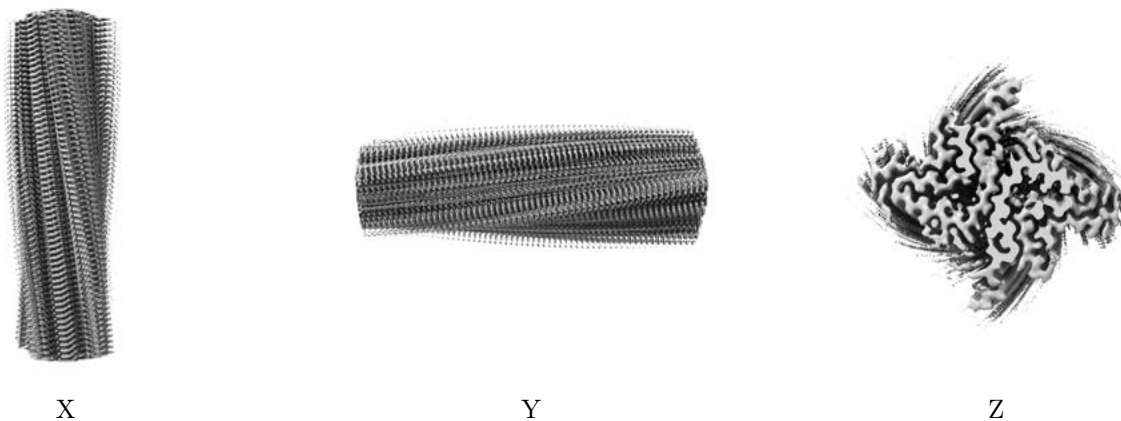


Z

The images above show the map standard deviation projections with false color in three orthogonal directions. Minimum values are shown in green, max in blue, and dark to light orange shades represent small to large values respectively.

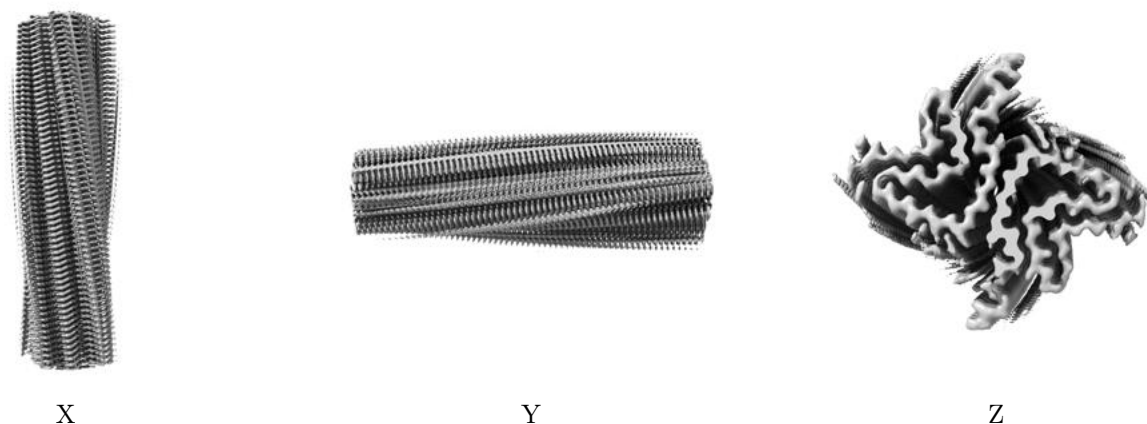
6.5 Orthogonal surface views [i](#)

6.5.1 Primary map



The images above show the 3D surface view of the map at the recommended contour level 0.012. These images, in conjunction with the slice images, may facilitate assessment of whether an appropriate contour level has been provided.

6.5.2 Raw map



These images show the 3D surface of the raw map. The raw map's contour level was selected so that its surface encloses the same volume as the primary map does at its recommended contour level.

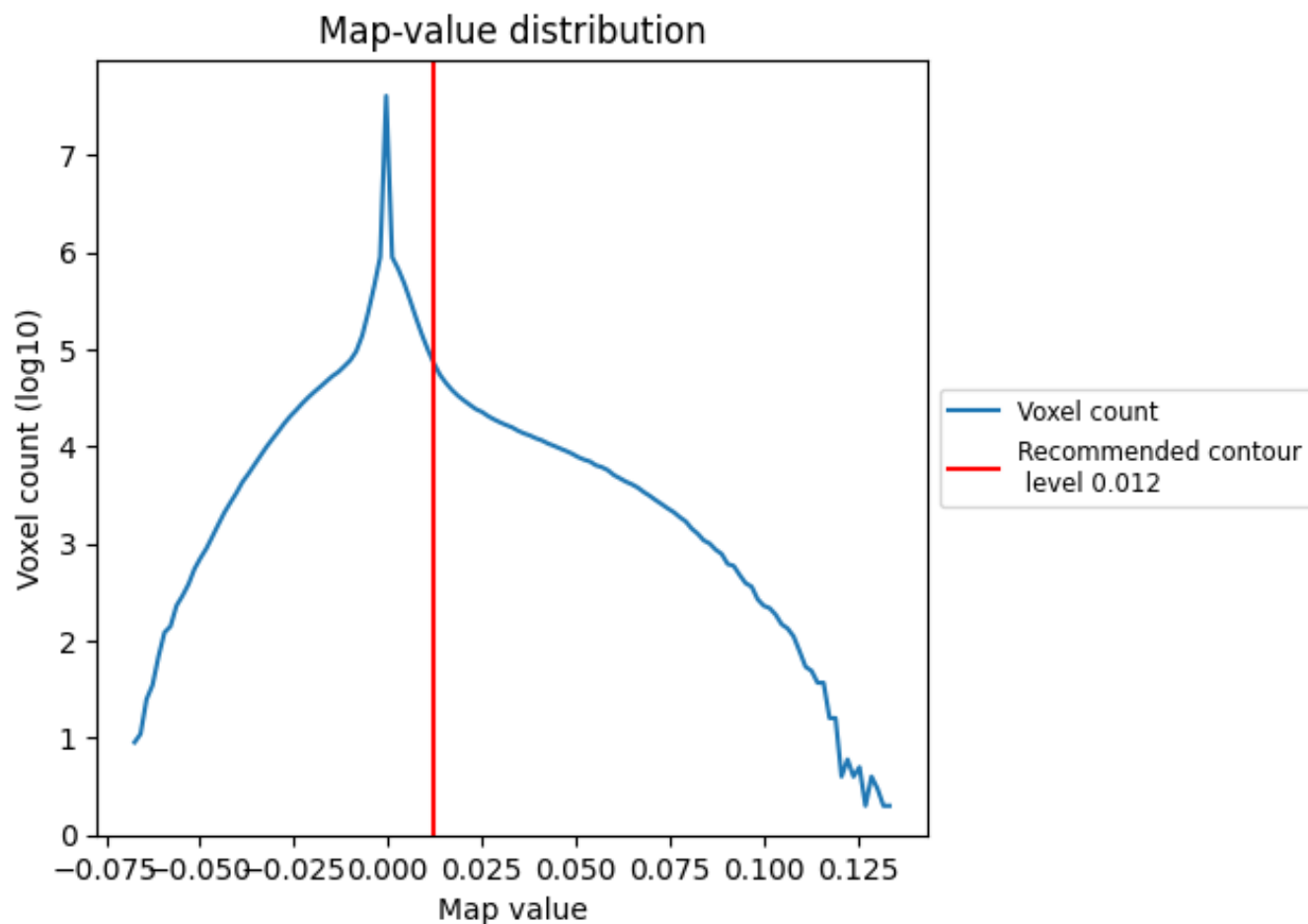
6.6 Mask visualisation [i](#)

This section was not generated. No masks/segmentation were deposited.

7 Map analysis [i](#)

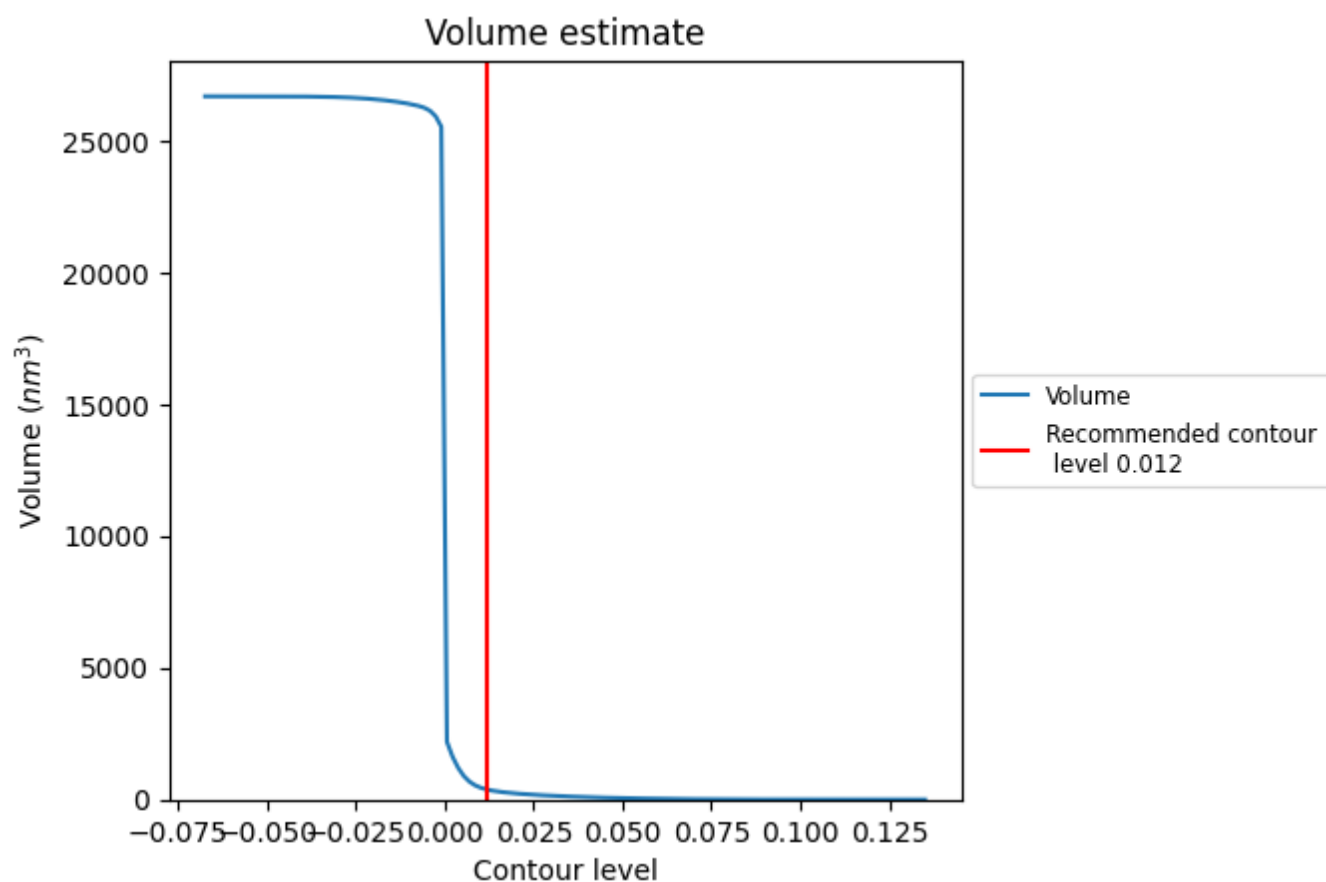
This section contains the results of statistical analysis of the map.

7.1 Map-value distribution [i](#)



The map-value distribution is plotted in 128 intervals along the x-axis. The y-axis is logarithmic. A spike in this graph at zero usually indicates that the volume has been masked.

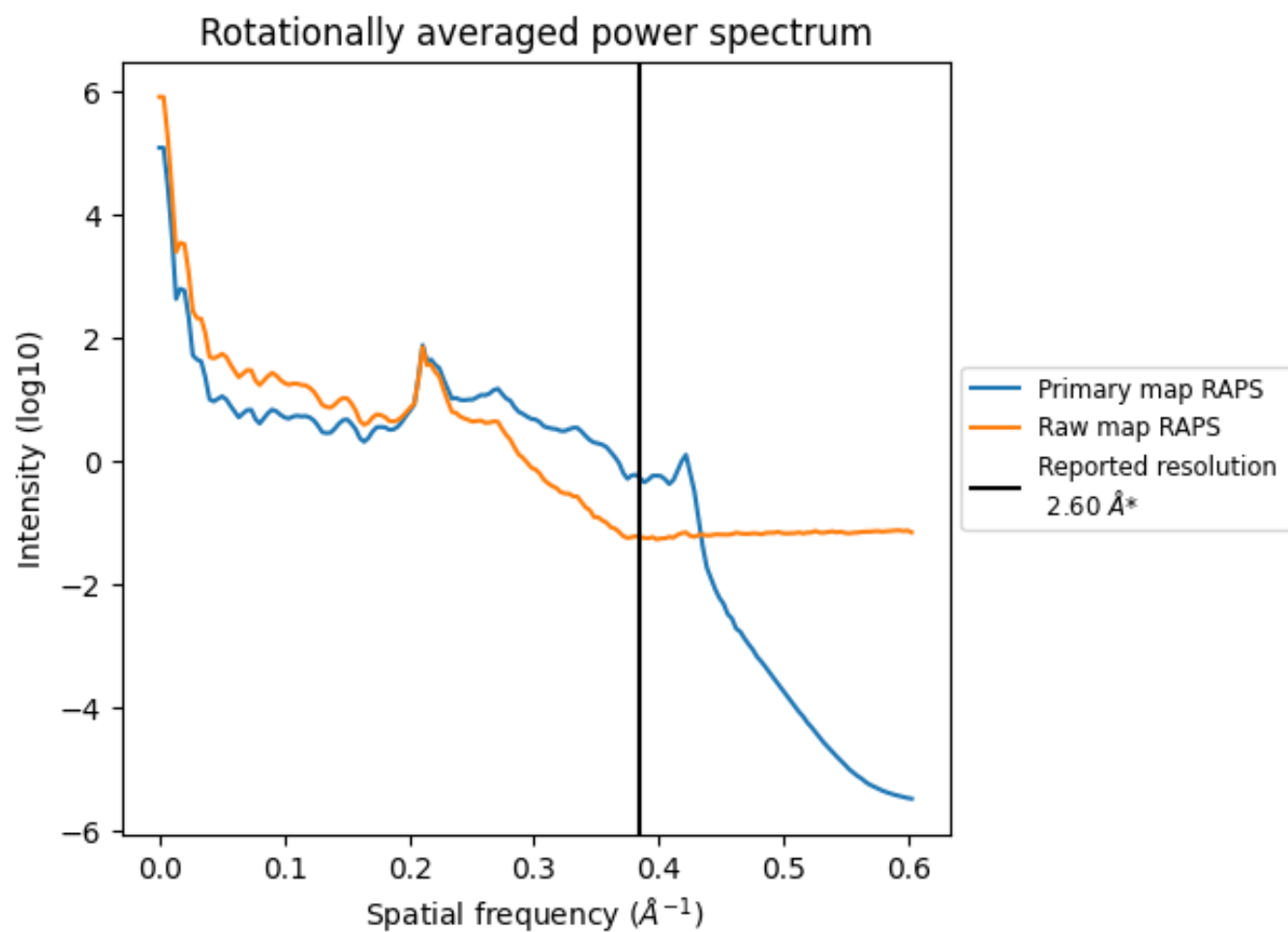
7.2 Volume estimate [i](#)



The volume at the recommended contour level is 378 nm³; this corresponds to an approximate mass of 341 kDa.

The volume estimate graph shows how the enclosed volume varies with the contour level. The recommended contour level is shown as a vertical line and the intersection between the line and the curve gives the volume of the enclosed surface at the given level.

7.3 Rotationally averaged power spectrum ⓘ

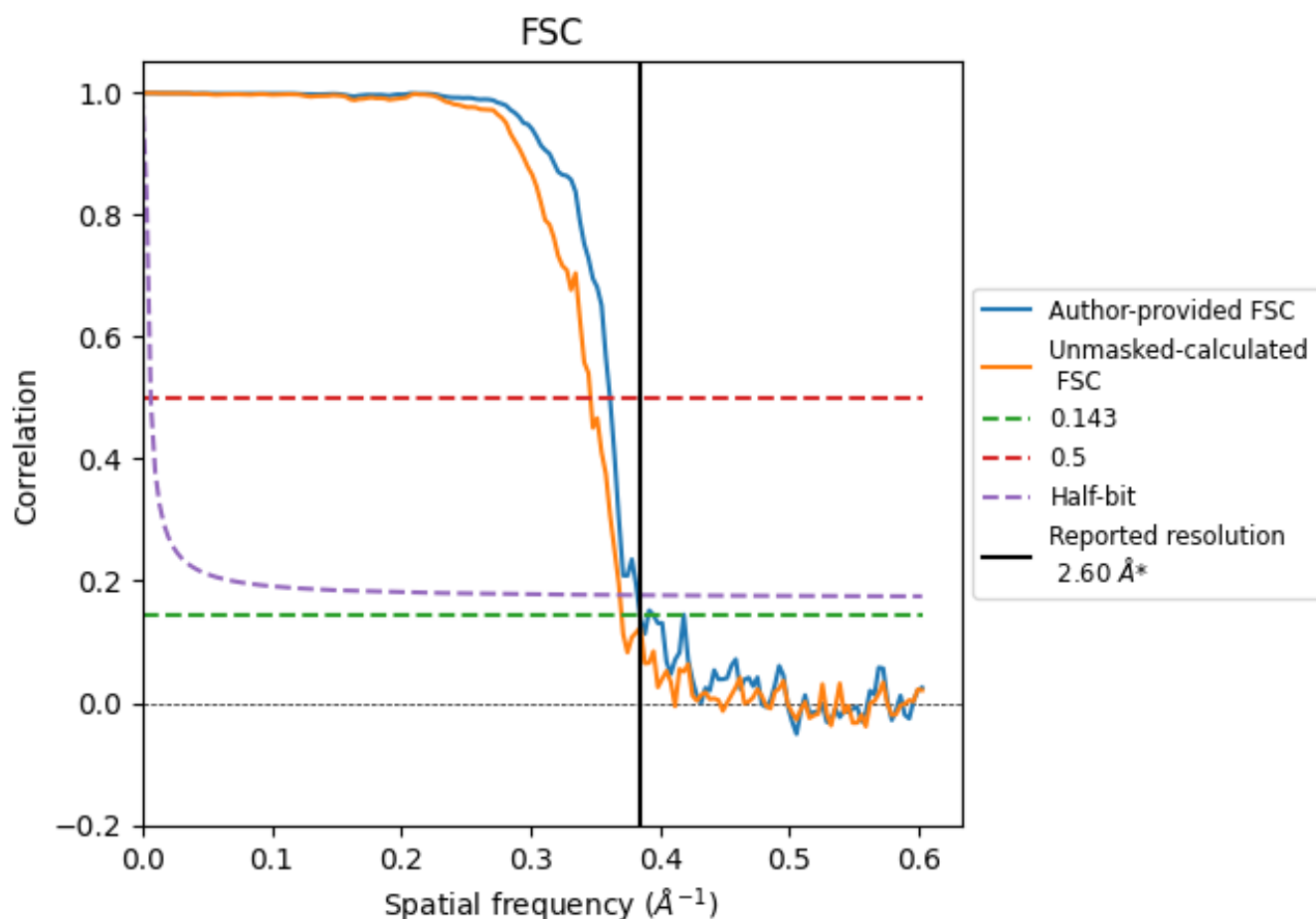


*Reported resolution corresponds to spatial frequency of 0.385 Å⁻¹

8 Fourier-Shell correlation [i](#)

Fourier-Shell Correlation (FSC) is the most commonly used method to estimate the resolution of single-particle and subtomogram-averaged maps. The shape of the curve depends on the imposed symmetry, mask and whether or not the two 3D reconstructions used were processed from a common reference. The reported resolution is shown as a black line. A curve is displayed for the half-bit criterion in addition to lines showing the 0.143 gold standard cut-off and 0.5 cut-off.

8.1 FSC [i](#)



*Reported resolution corresponds to spatial frequency of 0.385 \AA^{-1}

8.2 Resolution estimates [i](#)

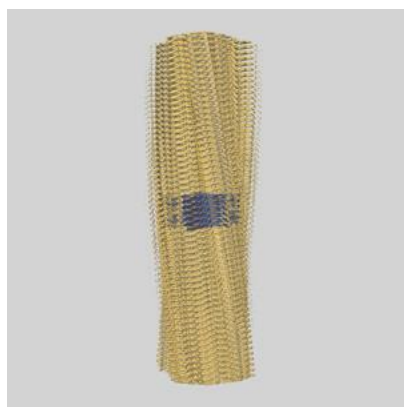
Resolution estimate (Å)	Estimation criterion (FSC cut-off)		
	0.143	0.5	Half-bit
Reported by author	2.60	-	-
Author-provided FSC curve	2.60	2.77	2.61
Unmasked-calculated*	2.70	2.89	2.71

*Resolution estimate based on FSC curve calculated by comparison of deposited half-maps.

9 Map-model fit [i](#)

This section contains information regarding the fit between EMDB map EMD-64125 and PDB model 9UFX. Per-residue inclusion information can be found in section [3](#) on page [6](#).

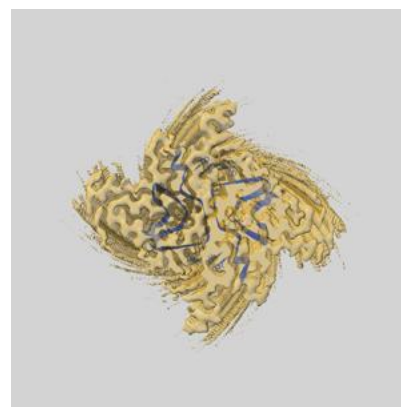
9.1 Map-model overlay [i](#)



X



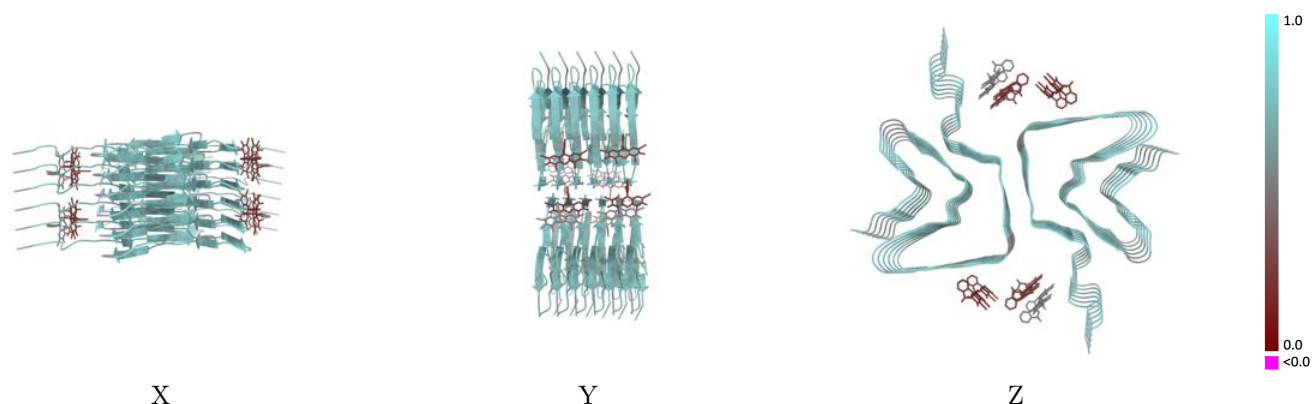
Y



Z

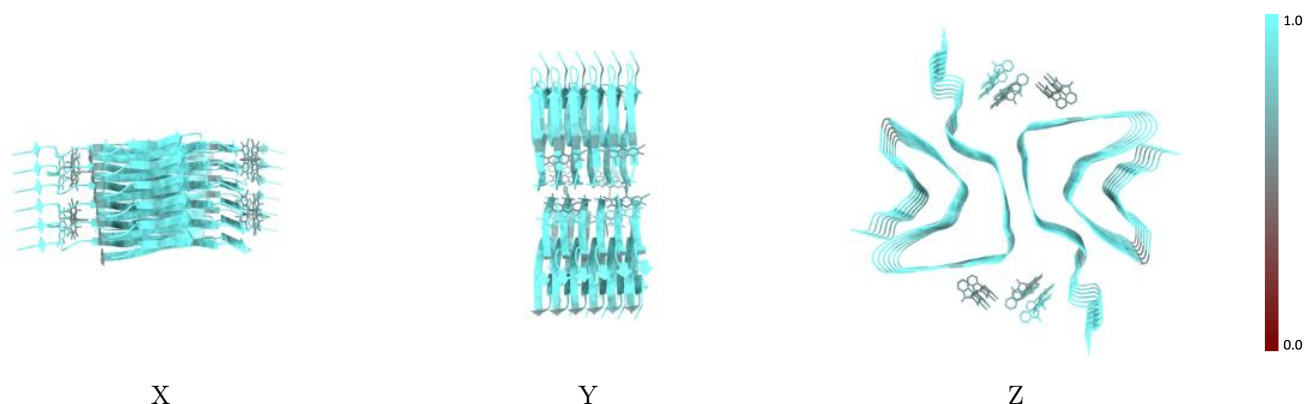
The images above show the 3D surface view of the map at the recommended contour level 0.012 at 50% transparency in yellow overlaid with a ribbon representation of the model coloured in blue. These images allow for the visual assessment of the quality of fit between the atomic model and the map.

9.2 Q-score mapped to coordinate model [i](#)



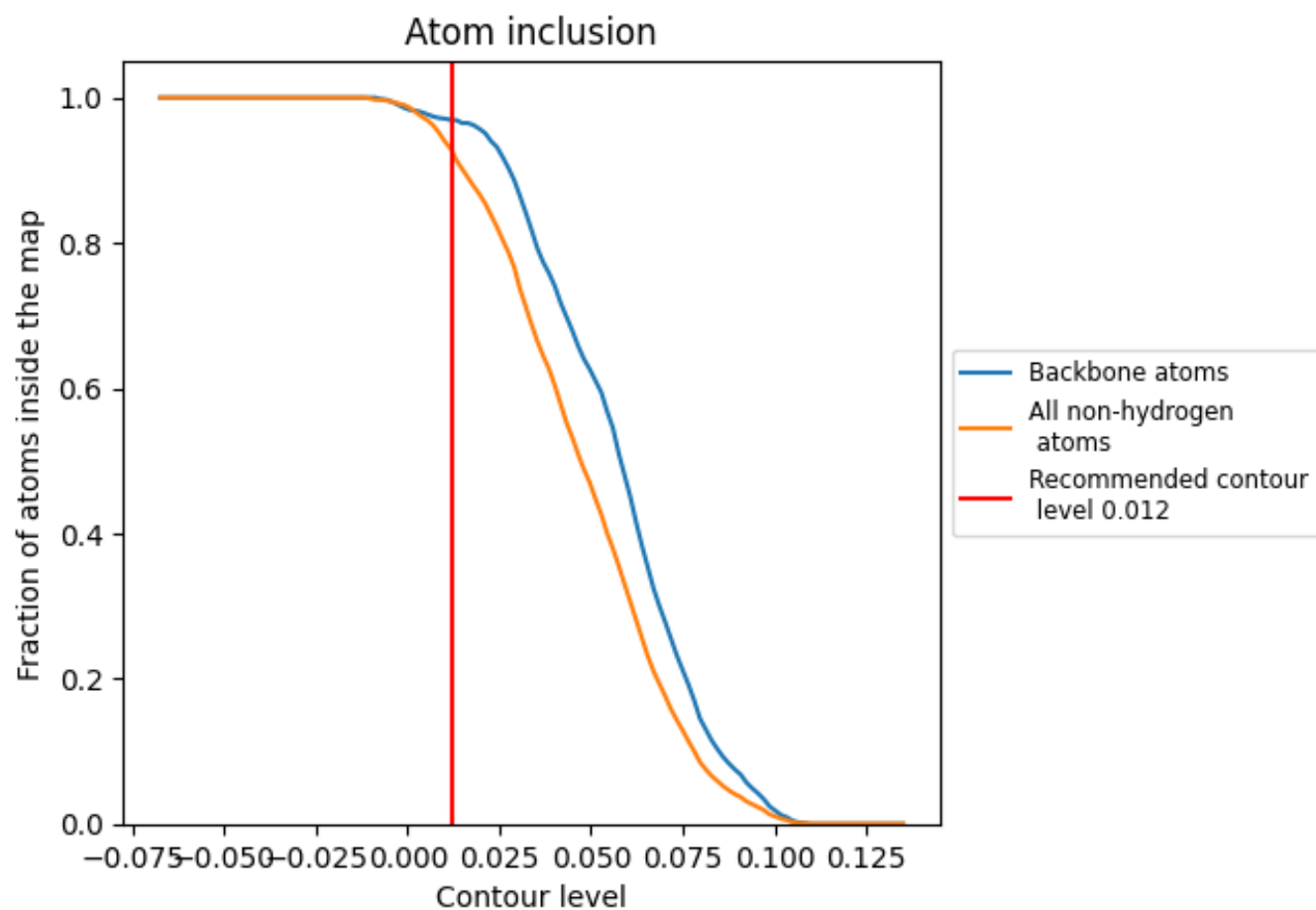
The images above show the model with each residue coloured according to its Q-score. This shows their resolvability in the map with higher Q-score values reflecting better resolvability. Please note: Q-score is calculating the resolvability of atoms, and thus high values are only expected at resolutions at which atoms can be resolved. Low Q-score values may therefore be expected for many entries.

9.3 Atom inclusion mapped to coordinate model [i](#)



The images above show the model with each residue coloured according to its atom inclusion. This shows to what extent they are inside the map at the recommended contour level (0.012).

9.4 Atom inclusion [i](#)



At the recommended contour level, 97% of all backbone atoms, 93% of all non-hydrogen atoms, are inside the map.

9.5 Map-model fit summary ⓘ

The table lists the average atom inclusion at the recommended contour level (0.012) and Q-score for the entire model and for each chain.

Chain	Atom inclusion	Q-score
All	<div><div></div></div> 0.9280	<div><div></div></div> 0.6260
A	<div><div></div></div> 0.9010	<div><div></div></div> 0.5860
B	<div><div></div></div> 0.9460	<div><div></div></div> 0.6470
C	<div><div></div></div> 0.9080	<div><div></div></div> 0.5940
D	<div><div></div></div> 0.9460	<div><div></div></div> 0.6510
E	<div><div></div></div> 0.9430	<div><div></div></div> 0.6530
F	<div><div></div></div> 0.9380	<div><div></div></div> 0.6360
G	<div><div></div></div> 0.8970	<div><div></div></div> 0.5850
H	<div><div></div></div> 0.9430	<div><div></div></div> 0.6500
I	<div><div></div></div> 0.9010	<div><div></div></div> 0.5900
J	<div><div></div></div> 0.9460	<div><div></div></div> 0.6520
K	<div><div></div></div> 0.9410	<div><div></div></div> 0.6520
L	<div><div></div></div> 0.9400	<div><div></div></div> 0.6360

1.0

0.0

<0.0