



## wwPDB EM Validation Summary Report ⓘ

Apr 8, 2026 – 10:18 PM UTC

PDB ID : 9UA0 / pdb\_00009ua0  
EMDB ID : EMD-63974  
Title : Cryo-EM structure of cyanobacterial bicarbonate transporter CmpBCD in the presence of nitrate  
Authors : Li, Q.Y.; Li, B.; Zhou, C.Z.; Jiang, Y.L.  
Deposited on : 2025-03-31  
Resolution : 3.39 Å(reported)

This is a wwPDB EM Validation Summary Report for a publicly released PDB entry.

We welcome your comments at [validation@mail.wwpdb.org](mailto:validation@mail.wwpdb.org)

A user guide is available at

<https://www.wwpdb.org/validation/2017/EMValidationReportHelp>  
with specific help available everywhere you see the ⓘ symbol.

The types of validation reports are described at

<http://www.wwpdb.org/validation/2017/FAQs#types>.

---

The following versions of software and data (see [references ⓘ](#)) were used in the production of this report:

EMDB validation analysis : 0.0.1.dev132  
MolProbity : 4-5-2 with Phenix2.0  
Percentile statistics : 20250101.v01 (using entries in the PDB archive January 1st 2025)  
EM percentile statistics : 202505.v01 (Using data in the EMDB archive up until May 2025)  
MapQ : 1.9.13  
Ideal geometry (proteins) : Engh & Huber (2001)  
Ideal geometry (DNA, RNA) : Parkinson et al. (1996)  
Validation Pipeline (wwPDB-VP) : 2.49

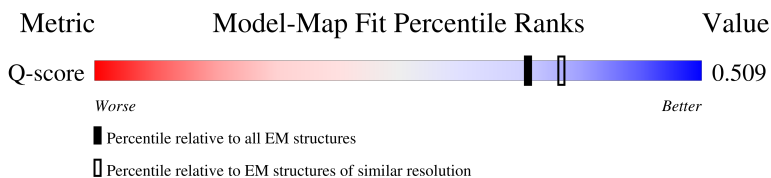
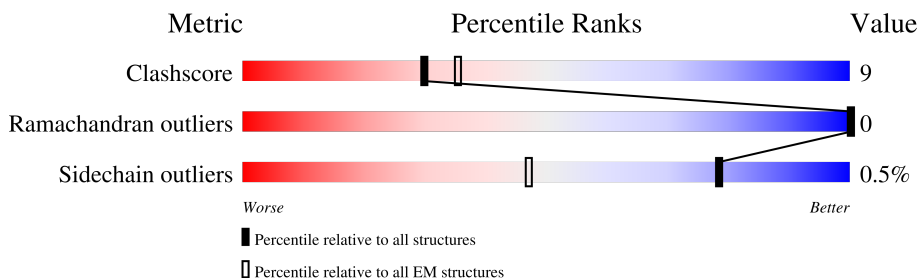
# 1 Overall quality at a glance

The following experimental techniques were used to determine the structure:

*ELECTRON MICROSCOPY*

The reported resolution of this entry is 3.39 Å.

Percentile scores (ranging between 0-100) for global validation metrics of the entry are shown in the following graphic. The table shows the number of entries on which the scores are based.



Metric	Whole archive (#Entries)	EM structures (#Entries)	Similar EM resolution (#Entries, resolution range(Å))
Clashscore	229148	23984	-
Ramachandran outliers	224038	23583	-
Sidechain outliers	223484	23102	-
Q-score	-	25397	14220 ( 2.89 - 3.89 )

The table below summarises the geometric issues observed across the polymeric chains and their fit to the map. The red, orange, yellow and green segments of the bar indicate the fraction of residues that contain outliers for  $\geq 3$ , 2, 1 and 0 types of geometric quality criteria respectively. A grey segment represents the fraction of residues that are not modelled. The numeric value for each fraction is indicated below the corresponding segment, with a dot representing fractions  $\leq 5\%$ . The upper red bar (where present) indicates the fraction of residues that have poor fit to the EM map (all-atom inclusion  $< 40\%$ ). The numeric value is given above the bar.

Mol	Chain	Length	Quality of chain
1	A	280	
1	B	280	
2	C	690	
3	D	278	

## 2 Entry composition

There are 3 unique types of molecules in this entry. The entry contains 16410 atoms, of which 8359 are hydrogens and 0 are deuteriums.

In the tables below, the AltConf column contains the number of residues with at least one atom in alternate conformation and the Trace column contains the number of residues modelled with at most 2 atoms.

- Molecule 1 is a protein called CmpB.

Mol	Chain	Residues	Atoms						AltConf	Trace
1	A	255	Total	C	H	N	O	S	0	0
			4100	1344	2101	321	332	2		
1	B	251	Total	C	H	N	O	S	0	0
			4037	1323	2071	317	324	2		

- Molecule 2 is a protein called CmpC.

Mol	Chain	Residues	Atoms						AltConf	Trace
2	C	264	Total	C	H	N	O	S	0	0
			4193	1304	2130	371	377	11		

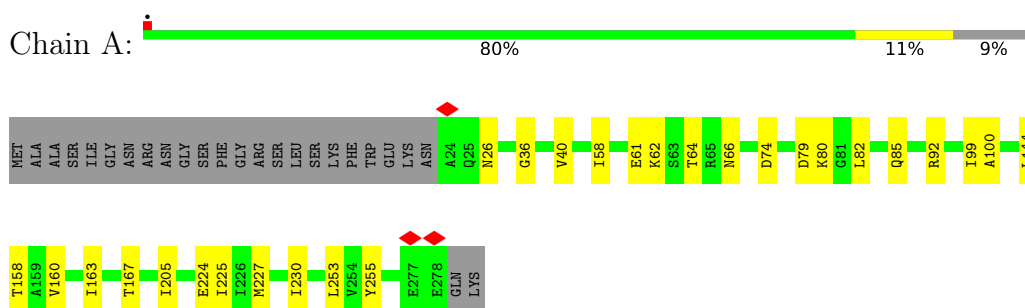
- Molecule 3 is a protein called CmpD.

Mol	Chain	Residues	Atoms						AltConf	Trace
3	D	257	Total	C	H	N	O	S	0	0
			4080	1292	2057	347	371	13		

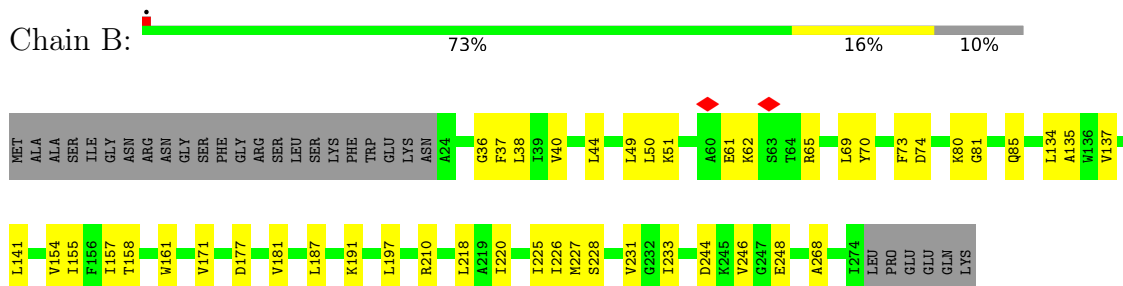
### 3 Residue-property plots [i](#)

These plots are drawn for all protein, RNA, DNA and oligosaccharide chains in the entry. The first graphic for a chain summarises the proportions of the various outlier classes displayed in the second graphic. The second graphic shows the sequence view annotated by issues in geometry and atom inclusion in map density. Residues are color-coded according to the number of geometric quality criteria for which they contain at least one outlier: green = 0, yellow = 1, orange = 2 and red = 3 or more. A red diamond above a residue indicates a poor fit to the EM map for this residue (all-atom inclusion < 40%). Stretches of 2 or more consecutive residues without any outlier are shown as a green connector. Residues present in the sample, but not in the model, are shown in grey.

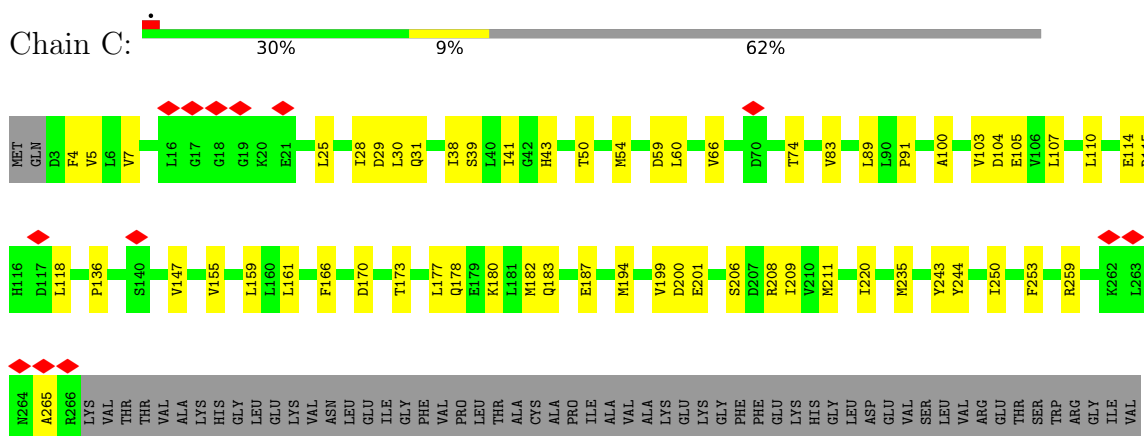
#### • Molecule 1: CmpB



#### • Molecule 1: CmpB



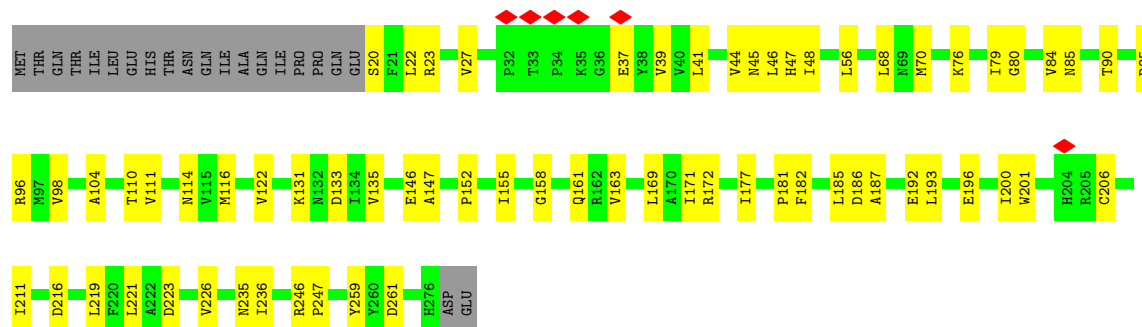
#### • Molecule 2: CmpC



TYR	ALA	ALA	LEU	GLY	ASP
	ILE	GLY	LEU	LEU	ASP
	GLN	VAL	GLU	ILE	LYS
	ASP	ASN	ALA	ASP	GLY
ASP	PHE	ARG	CYS	GLY	MET
ASP	ASP	PRO	MET	PHE	LEU
LYS	ASP	SER	TYR	CYS	GLN
	ILE	ARG	TYR	VAL	SER
	PRO	SER	ALA	GLY	THR
	PHE	GLU	ASP	GLU	ARG
	ASN	HIS	PRO	PRO	ASP
	ALA	LEU	ASN	TRP	ALA
	GLU	TRP	ASN	ASN	GLN
	ASP	HIS	ALA	PHE	HIS
	PRO	ILE	GLU	ARG	SER
	ILE	THR	GLU	ALA	MET
	GLY	GLN	ILE	GLY	LEU
	TYR	MET	ARG	MET	PRO
	LEU	ALA	GLN	GLU	VAL
	ASN	ARG	ILE	ASN	HIS
	HIS	TRP	LEU	ILE	PRO
	LEU	GLY	SER	GLY	SER
	ASP	ASP	ARG	PHE	SER
	ILE	VAL	ARG	THR	MET
	LYS	PRO	ALA	VAL	HIS
	ARG	PHE	TYR	ALA	ASN
	ASN	PRO	VAL	THR	LEU
	ILE	ASN	SER	ASP	LEU
	THR	ASN	THR	LEU	LEU
	MET	TRP	ASN	GLU	ARG
	ALA	VAL	VAL	ILE	TRP
	GLU	GLU	ASN	TRP	TYR
	ILE	VAL	TYR	ASN	LEU
	ALA	LEU	ILE	GLY	THR
	MET	GLU	HIS	HIS	ALA
	GLU	LYS	LEU	PRO	GLY
	SER	THR	GLY	GLY	LEU
	VAL	CYS	ASN	ILE	THR
	ARG	ARG	PRO	VAL	ASP
	MET	VAL	ASP	LEU	PRO
	VAL	GLY	ASP	GLY	ASN
	ALA	VAL	VAL	VAL	GLY
	SER	PHE	THR	ARG	ASN
	SER	SER	CYS	GLU	ASP
	GLY	THR	ALA	ASP	GLU
	ASP	ALA	LEU	TRP	LYS
	TYR	ARG	ASP	ALA	THR
	LYS	ARG	PRO	ASN	LEU
	ASP	GLU	PRO	ALA	ASP
	HIS	LEU	MET	ALA	LYS
	ASP	GLY	ARG	PRO	HIS
	GLY	LEU	GLU	ASN	TYR
	ASP	THR	PRO	THR	ASP
	TYR	ASP	ALA	HIS	ARG
	LYS	ILE	HIS	ILE	GLY
	ASP	THR	HIS	ALA	VAL
	HIS	TYR	GLN	LEU	VAL
	ASP	SER	PHE	VAL	ASP
	ILE	ASN	TYR	LYS	THR
	ASP	ASN	GLY	ALA	LEU

- Molecule 3: CmpD

Chain D:  68% 24% 8%



## 4 Experimental information

Property	Value	Source
EM reconstruction method	SINGLE PARTICLE	Depositor
Imposed symmetry	POINT, Not provided	
Number of particles used	97237	Depositor
Resolution determination method	FSC 0.143 CUT-OFF	Depositor
CTF correction method	PHASE FLIPPING AND AMPLITUDE CORRECTION	Depositor
Microscope	TFS KRIOS	Depositor
Voltage (kV)	300	Depositor
Electron dose ( $e^-/\text{\AA}^2$ )	50	Depositor
Minimum defocus (nm)	1500	Depositor
Maximum defocus (nm)	2300	Depositor
Magnification	Not provided	
Image detector	GATAN K3 (6k x 4k)	Depositor
Maximum map value	1.743	Depositor
Minimum map value	-1.058	Depositor
Average map value	0.001	Depositor
Map value standard deviation	0.040	Depositor
Recommended contour level	0.23	Depositor
Map size (Å)	273.92, 273.92, 273.92	wwPDB
Map dimensions	256, 256, 256	wwPDB
Map angles (°)	90.0, 90.0, 90.0	wwPDB
Pixel spacing (Å)	1.07, 1.07, 1.07	Depositor

## 5 Model quality [i](#)

### 5.1 Standard geometry [i](#)

The Z score for a bond length (or angle) is the number of standard deviations the observed value is removed from the expected value. A bond length (or angle) with  $|Z| > 5$  is considered an outlier worth inspection. RMSZ is the root-mean-square of all Z scores of the bond lengths (or angles).

Mol	Chain	Bond lengths		Bond angles	
		RMSZ	$\# Z  > 5$	RMSZ	$\# Z  > 5$
1	A	0.13	0/2053	0.29	0/2810
1	B	0.14	0/2019	0.32	0/2763
2	C	0.13	0/2096	0.33	0/2835
3	D	0.13	0/2064	0.29	0/2797
All	All	0.13	0/8232	0.31	0/11205

There are no bond length outliers.

There are no bond angle outliers.

There are no chirality outliers.

There are no planarity outliers.

### 5.2 Too-close contacts [i](#)

In the following table, the Non-H and H(model) columns list the number of non-hydrogen atoms and hydrogen atoms in the chain respectively. The H(added) column lists the number of hydrogen atoms added and optimized by MolProbity. The Clashes column lists the number of clashes within the asymmetric unit, whereas Symm-Clashes lists symmetry-related clashes.

Mol	Chain	Non-H	H(model)	H(added)	Clashes	Symm-Clashes
1	A	1999	2101	2100	21	0
1	B	1966	2071	2070	42	0
2	C	2063	2130	2130	43	0
3	D	2023	2057	2057	48	0
All	All	8051	8359	8357	150	0

The all-atom clashscore is defined as the number of clashes found per 1000 atoms (including hydrogen atoms). The all-atom clashscore for this structure is 9.

The worst 5 of 150 close contacts within the same asymmetric unit are listed below, sorted by their clash magnitude.

Atom-1	Atom-2	Interatomic distance (Å)	Clash overlap (Å)
2:C:25:LEU:HD23	2:C:28:ILE:HD13	1.58	0.85
2:C:118:LEU:HD23	2:C:118:LEU:O	1.84	0.77
3:D:68:LEU:HD11	3:D:211:ILE:HG23	1.68	0.75
1:B:62:LYS:NZ	1:B:65:ARG:O	2.18	0.73
1:B:231:VAL:HG13	1:B:231:VAL:O	1.88	0.73

There are no symmetry-related clashes.

## 5.3 Torsion angles [i](#)

### 5.3.1 Protein backbone [i](#)

In the following table, the Percentiles column shows the percent Ramachandran outliers of the chain as a percentile score with respect to all PDB entries followed by that with respect to all EM entries.

The Analysed column shows the number of residues for which the backbone conformation was analysed, and the total number of residues.

Mol	Chain	Analysed	Favoured	Allowed	Outliers	Percentiles	
1	A	253/280 (90%)	240 (95%)	13 (5%)	0	100	100
1	B	249/280 (89%)	230 (92%)	19 (8%)	0	100	100
2	C	262/690 (38%)	234 (89%)	28 (11%)	0	100	100
3	D	255/278 (92%)	237 (93%)	18 (7%)	0	100	100
All	All	1019/1528 (67%)	941 (92%)	78 (8%)	0	100	100

There are no Ramachandran outliers to report.

### 5.3.2 Protein sidechains [i](#)

In the following table, the Percentiles column shows the percent sidechain outliers of the chain as a percentile score with respect to all PDB entries followed by that with respect to all EM entries.

The Analysed column shows the number of residues for which the sidechain conformation was analysed, and the total number of residues.

Mol	Chain	Analysed	Rotameric	Outliers	Percentiles	
1	A	209/229 (91%)	209 (100%)	0	100	100
1	B	205/229 (90%)	205 (100%)	0	100	100

*Continued on next page...*



*Continued from previous page...*

Mol	Chain	Analysed	Rotameric	Outliers	Percentiles	
2	C	227/581 (39%)	224 (99%)	3 (1%)	61	71
3	D	223/243 (92%)	222 (100%)	1 (0%)	84	83
All	All	864/1282 (67%)	860 (100%)	4 (0%)	78	81

All (4) residues with a non-rotameric sidechain are listed below:

Mol	Chain	Res	Type
2	C	43	HIS
2	C	74	THR
2	C	83	VAL
3	D	45	ASN

Sometimes sidechains can be flipped to improve hydrogen bonding and reduce clashes. All (4) such sidechains are listed below:

Mol	Chain	Res	Type
1	B	166	ASN
2	C	197	HIS
3	D	47	HIS
3	D	132	ASN

### 5.3.3 RNA ⓘ

There are no RNA molecules in this entry.

## 5.4 Non-standard residues in protein, DNA, RNA chains ⓘ

There are no non-standard protein/DNA/RNA residues in this entry.

## 5.5 Carbohydrates ⓘ

There are no oligosaccharides in this entry.

## 5.6 Ligand geometry ⓘ

There are no ligands in this entry.

## 5.7 Other polymers [i](#)

There are no such residues in this entry.

## 5.8 Polymer linkage issues [i](#)

There are no chain breaks in this entry.

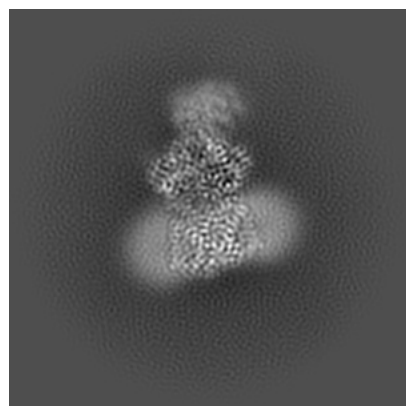
## 6 Map visualisation [i](#)

This section contains visualisations of the EMDB entry EMD-63974. These allow visual inspection of the internal detail of the map and identification of artifacts.

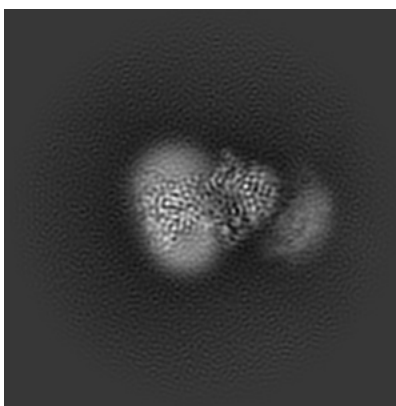
Images derived from a raw map, generated by summing the deposited half-maps, are presented below the corresponding image components of the primary map to allow further visual inspection and comparison with those of the primary map.

### 6.1 Orthogonal projections [i](#)

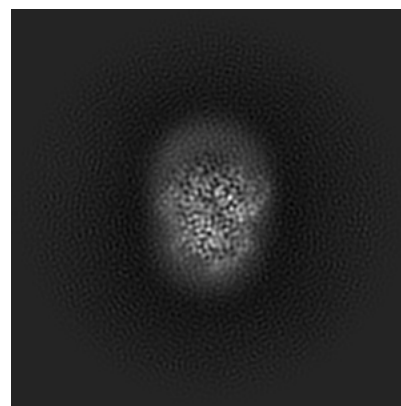
#### 6.1.1 Primary map



X

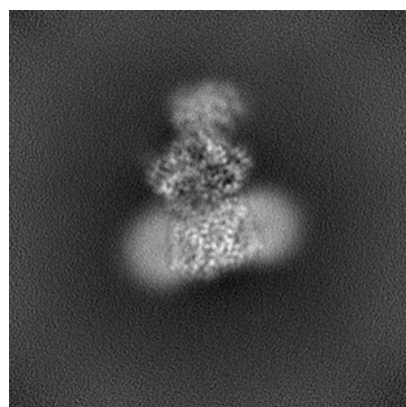


Y

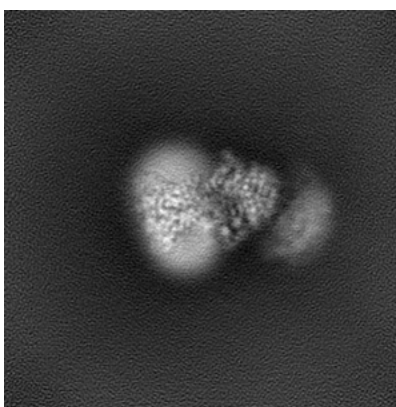


Z

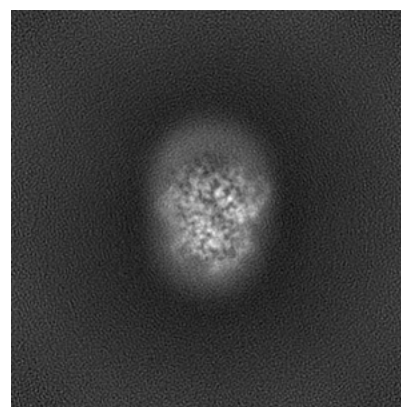
#### 6.1.2 Raw map



X



Y

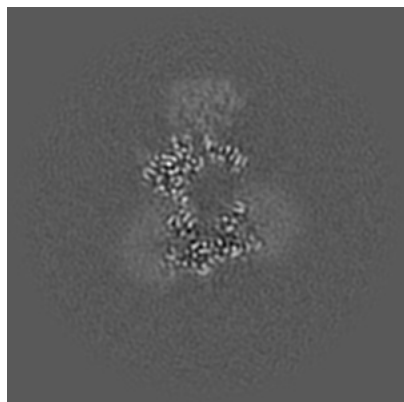


Z

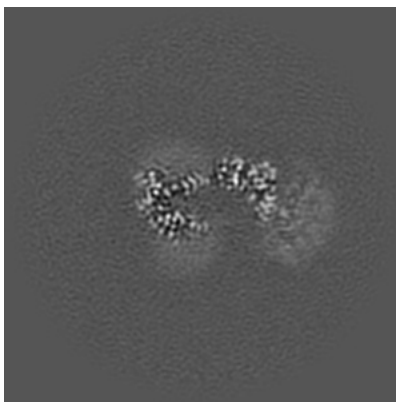
The images above show the map projected in three orthogonal directions.

## 6.2 Central slices [i](#)

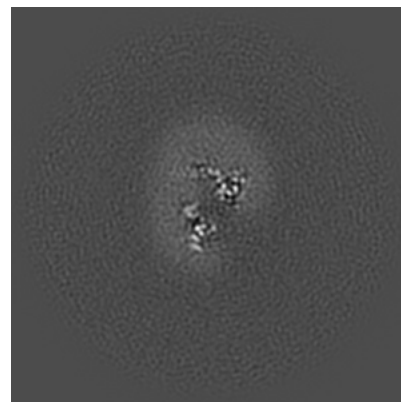
### 6.2.1 Primary map



X Index: 128

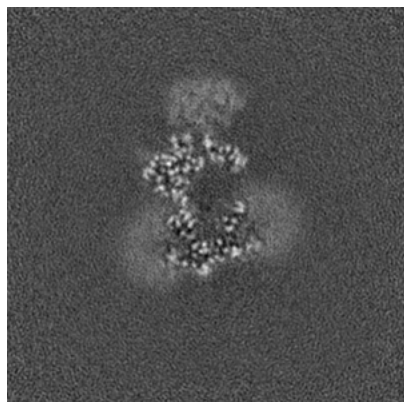


Y Index: 128

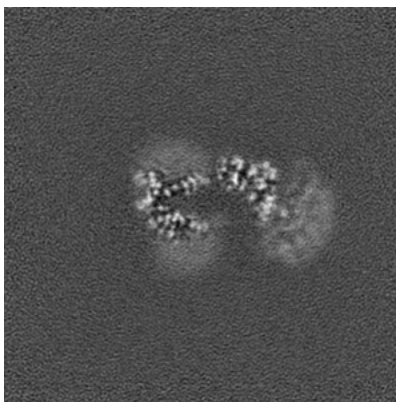


Z Index: 128

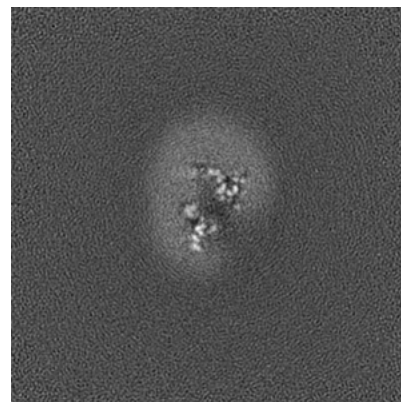
### 6.2.2 Raw map



X Index: 128



Y Index: 128

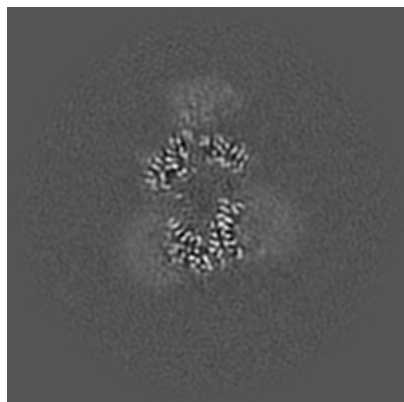


Z Index: 128

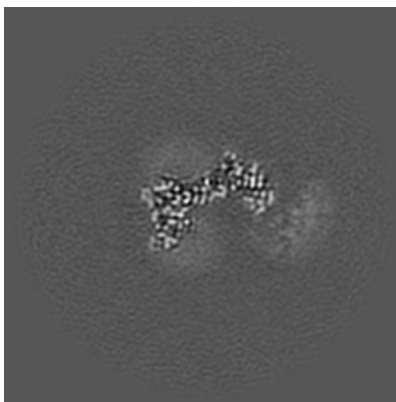
The images above show central slices of the map in three orthogonal directions.

## 6.3 Largest variance slices [i](#)

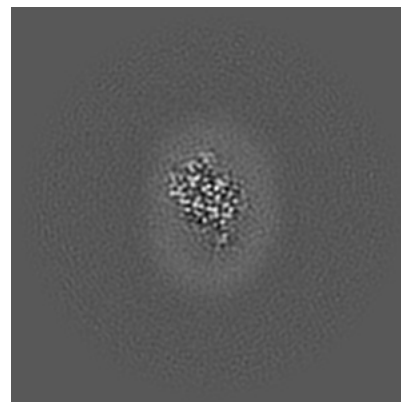
### 6.3.1 Primary map



X Index: 132

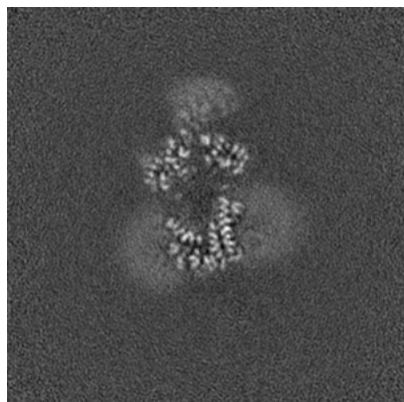


Y Index: 137

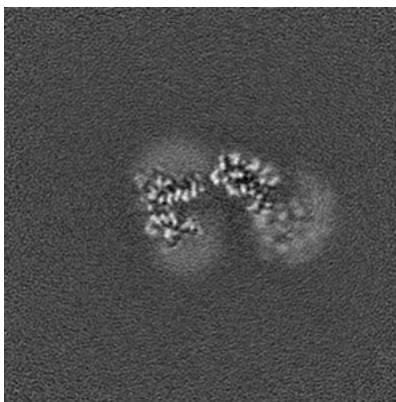


Z Index: 104

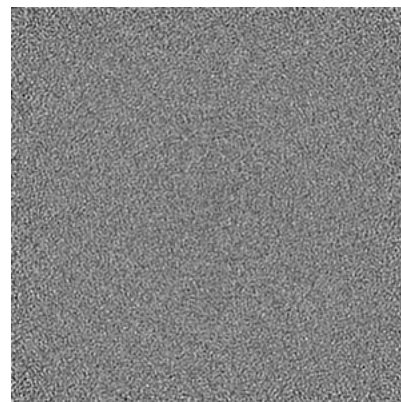
### 6.3.2 Raw map



X Index: 133



Y Index: 131



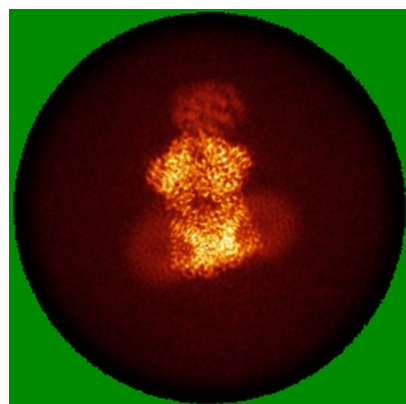
Z Index: 0

The images above show the largest variance slices of the map in three orthogonal directions.

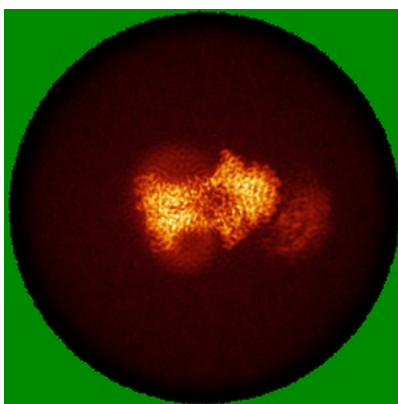


## 6.4 Orthogonal standard-deviation projections (False-color) [i](#)

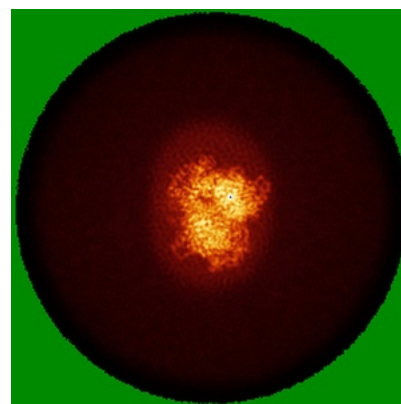
### 6.4.1 Primary map



X

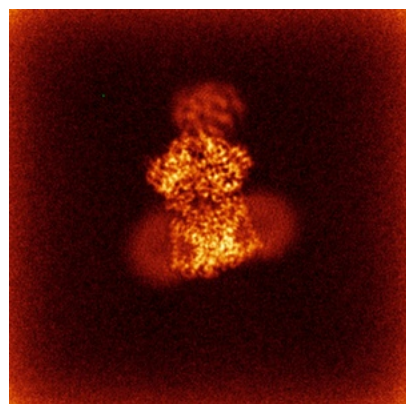


Y

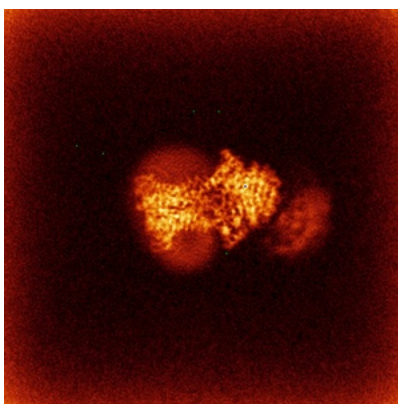


Z

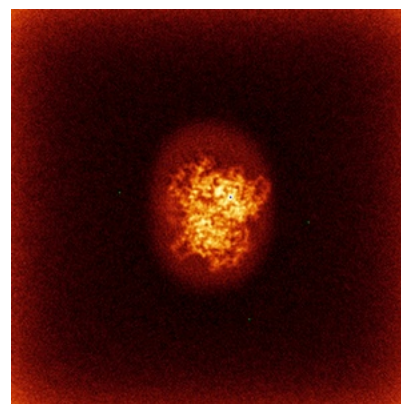
### 6.4.2 Raw map



X



Y

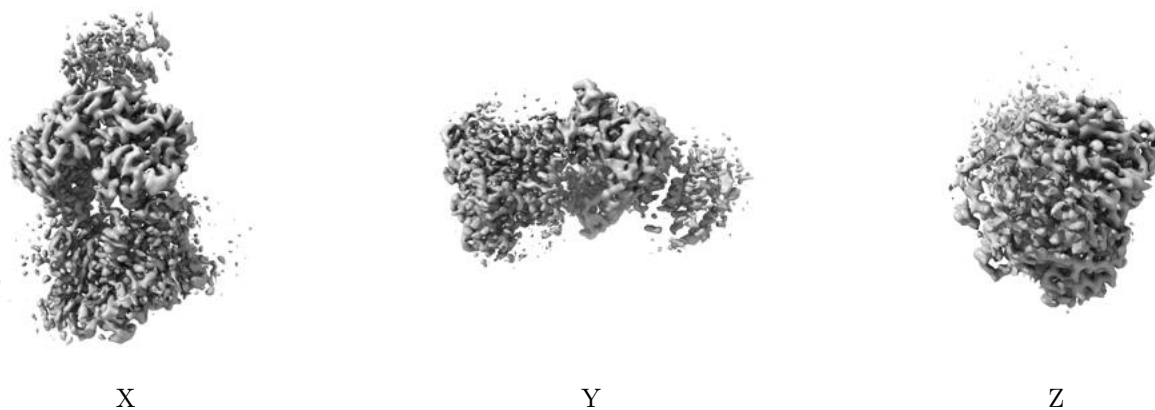


Z

The images above show the map standard deviation projections with false color in three orthogonal directions. Minimum values are shown in green, max in blue, and dark to light orange shades represent small to large values respectively.

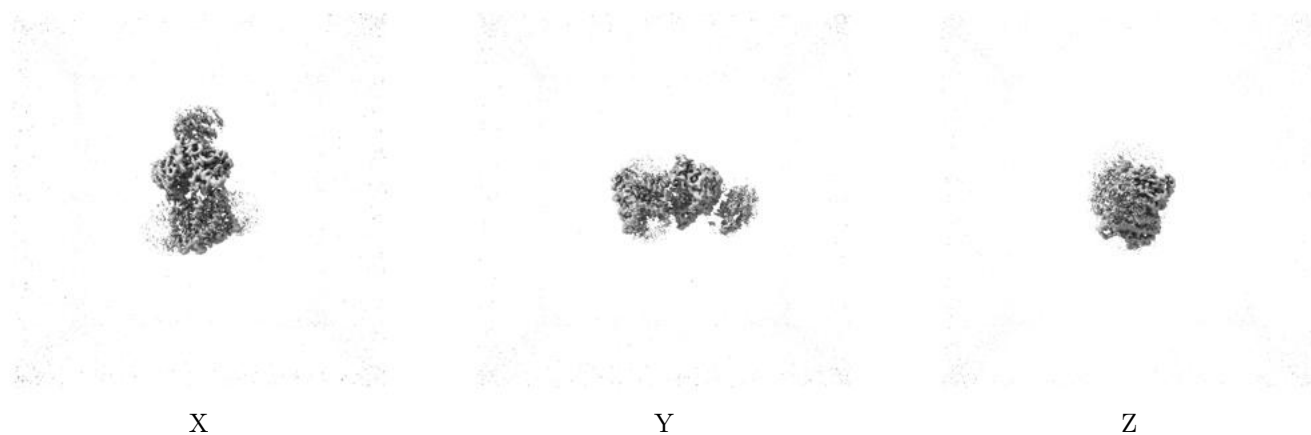
## 6.5 Orthogonal surface views [i](#)

### 6.5.1 Primary map



The images above show the 3D surface view of the map at the recommended contour level 0.23. These images, in conjunction with the slice images, may facilitate assessment of whether an appropriate contour level has been provided.

### 6.5.2 Raw map



These images show the 3D surface of the raw map. The raw map's contour level was selected so that its surface encloses the same volume as the primary map does at its recommended contour level.

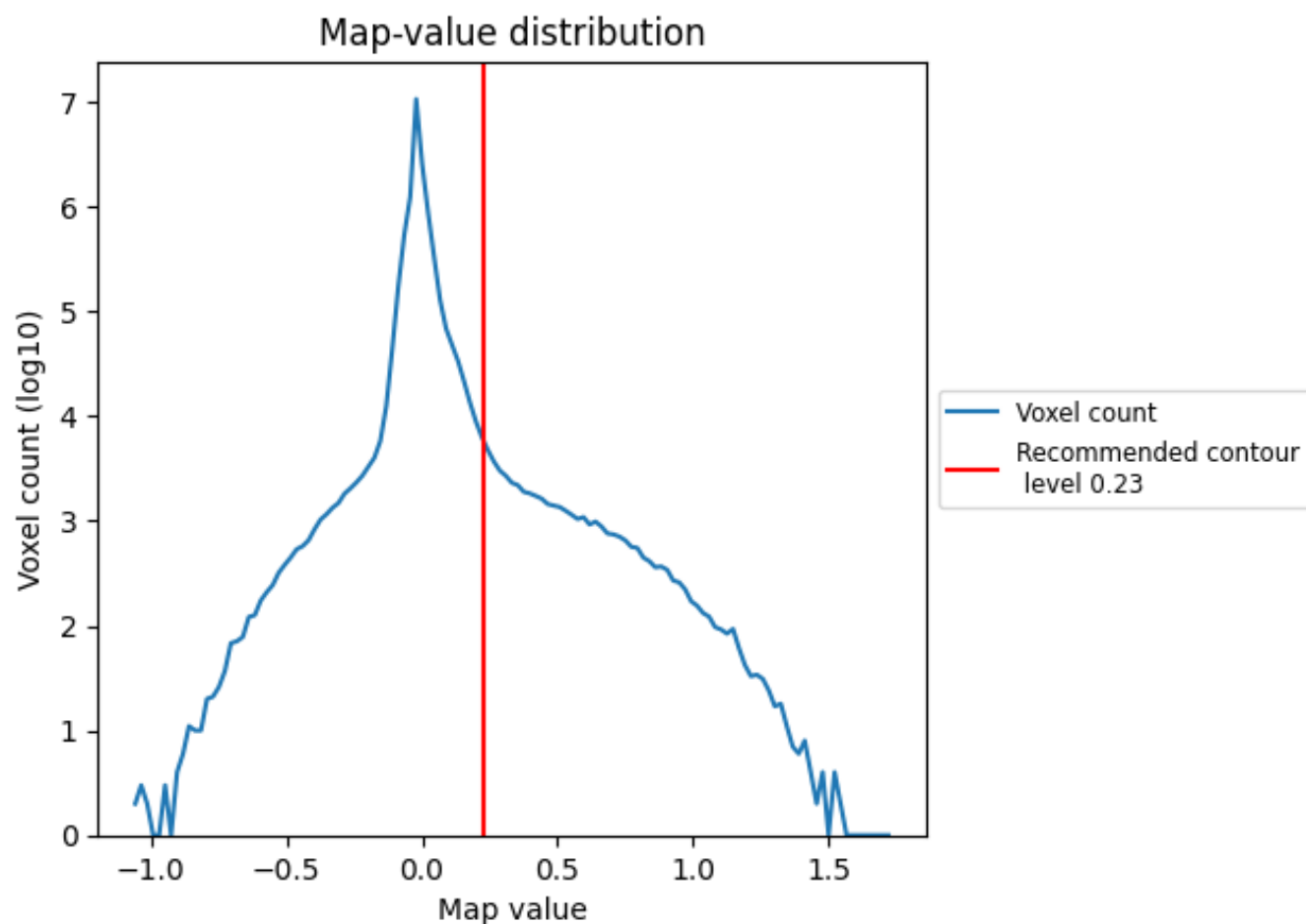
## 6.6 Mask visualisation [i](#)

This section was not generated. No masks/segmentation were deposited.

## 7 Map analysis [i](#)

This section contains the results of statistical analysis of the map.

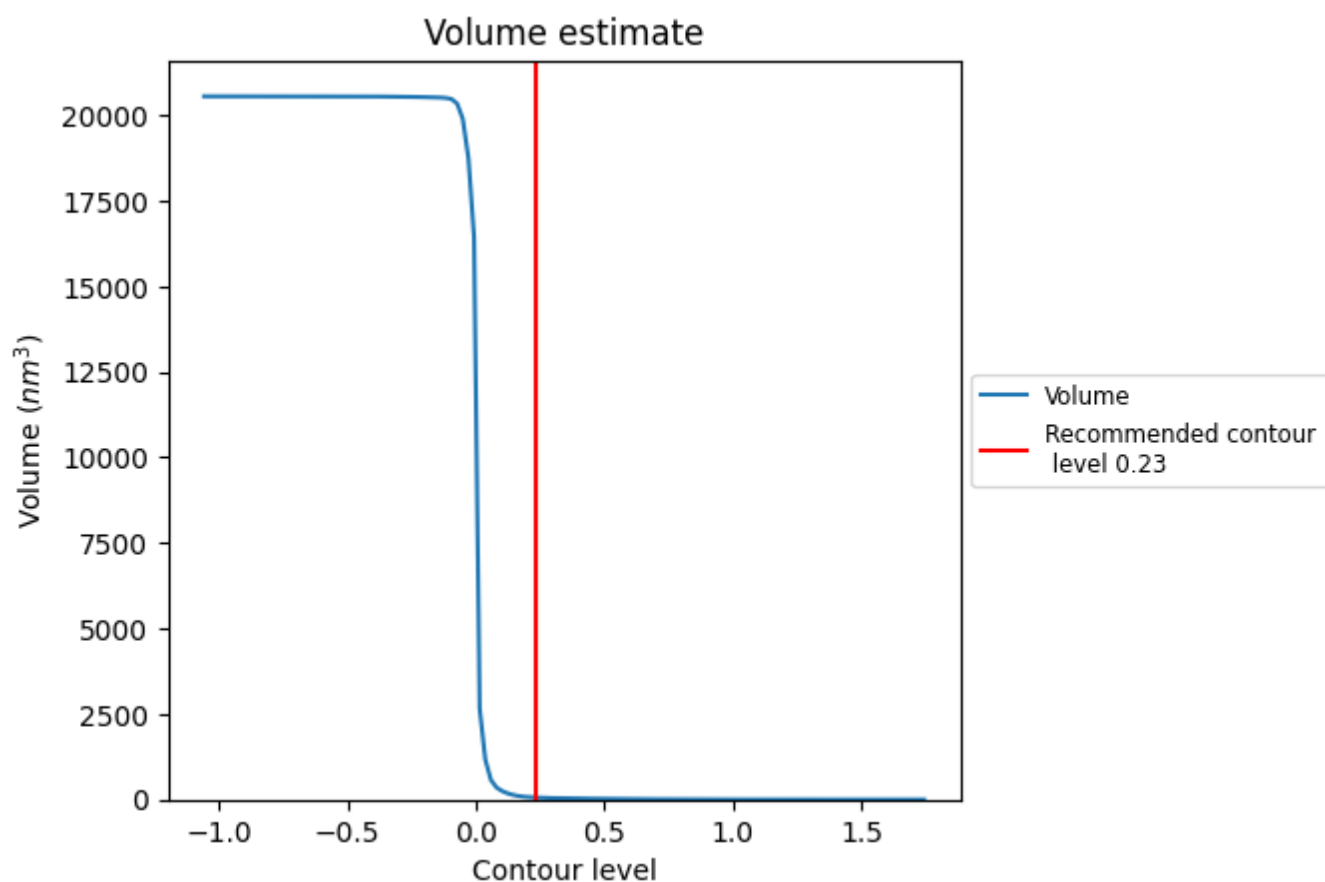
### 7.1 Map-value distribution [i](#)



The map-value distribution is plotted in 128 intervals along the x-axis. The y-axis is logarithmic. A spike in this graph at zero usually indicates that the volume has been masked.



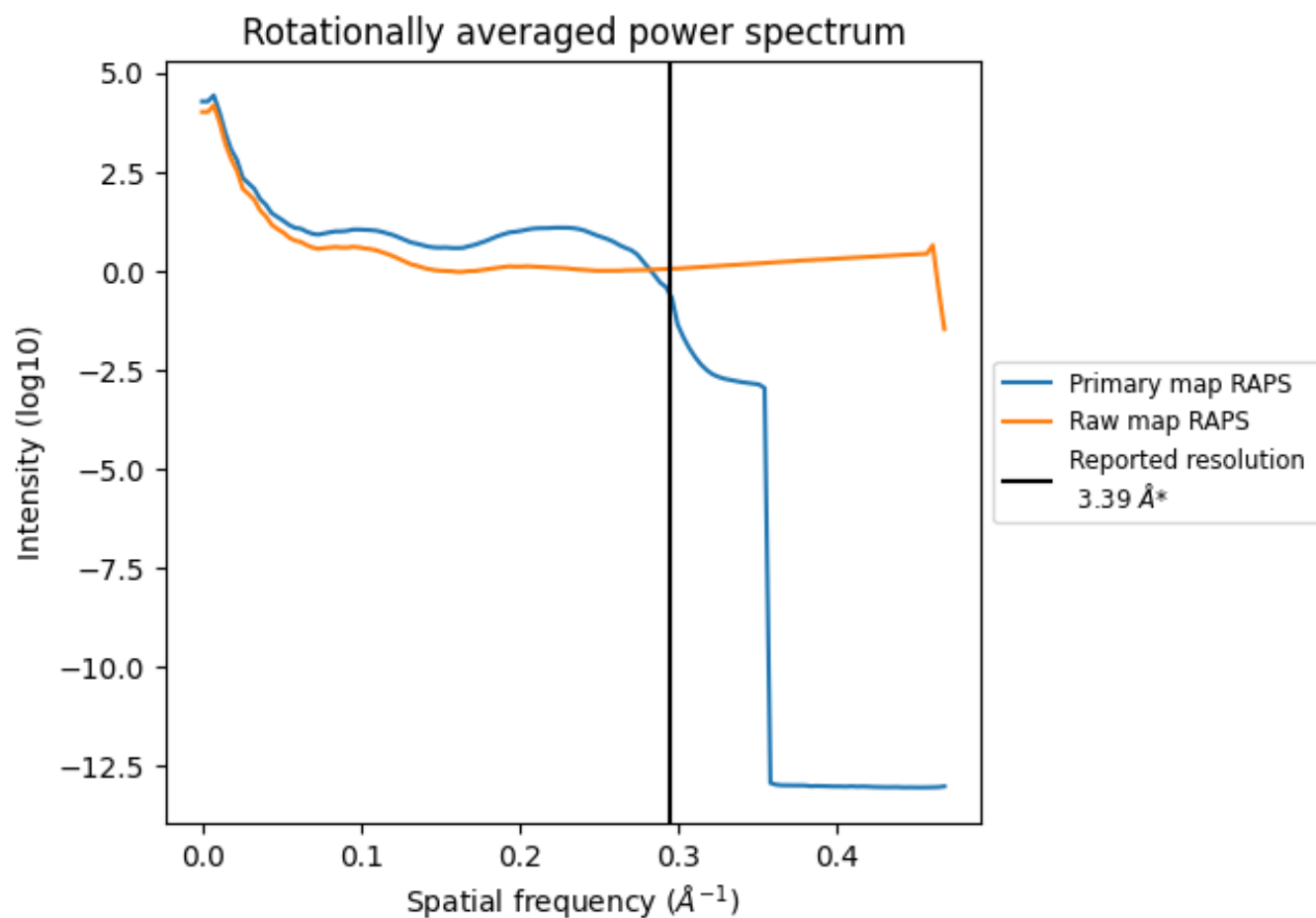
## 7.2 Volume estimate [i](#)



The volume at the recommended contour level is 60 nm<sup>3</sup>; this corresponds to an approximate mass of 54 kDa.

The volume estimate graph shows how the enclosed volume varies with the contour level. The recommended contour level is shown as a vertical line and the intersection between the line and the curve gives the volume of the enclosed surface at the given level.

### 7.3 Rotationally averaged power spectrum ⓘ

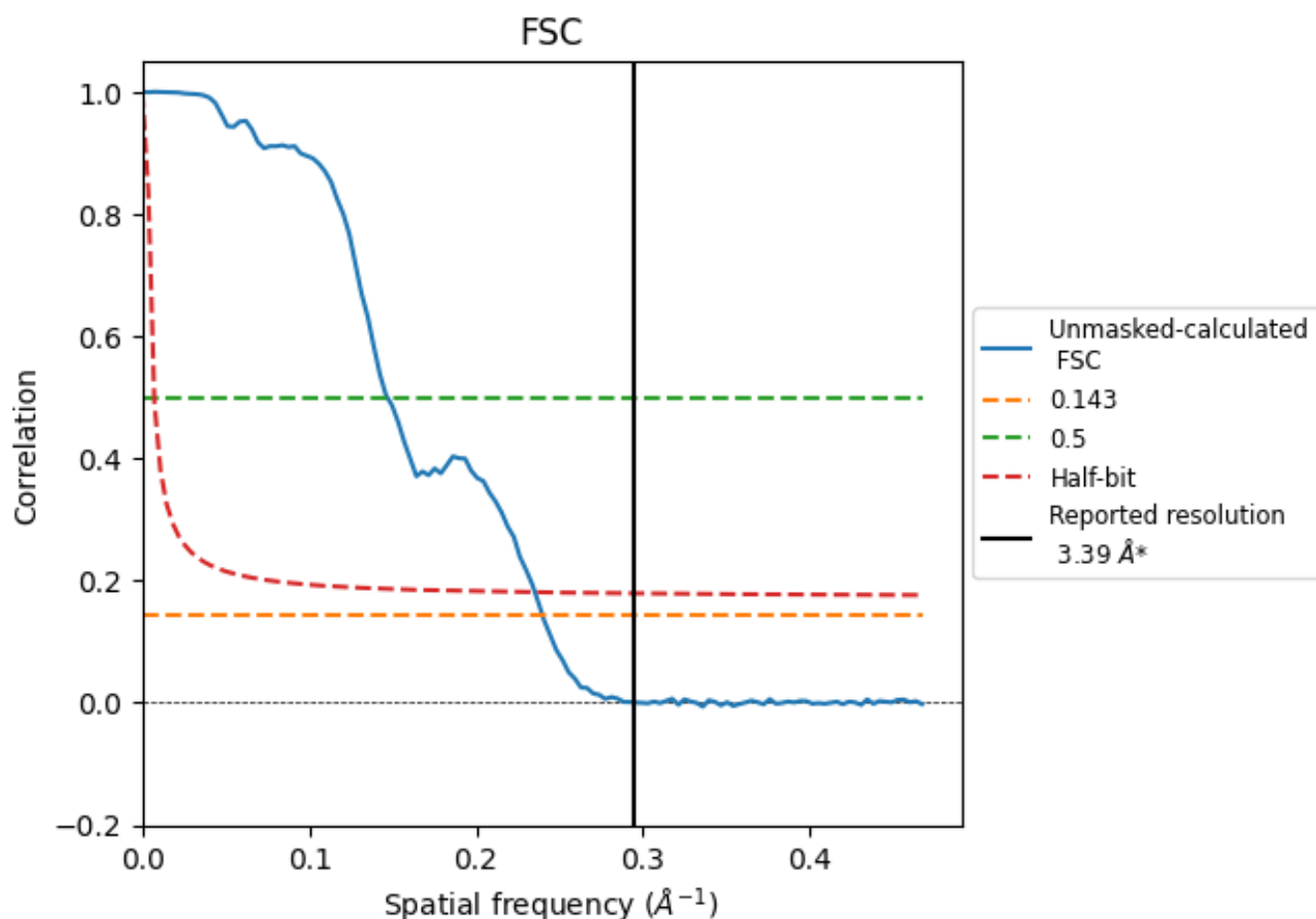


\*Reported resolution corresponds to spatial frequency of 0.295 Å<sup>-1</sup>

## 8 Fourier-Shell correlation [i](#)

Fourier-Shell Correlation (FSC) is the most commonly used method to estimate the resolution of single-particle and subtomogram-averaged maps. The shape of the curve depends on the imposed symmetry, mask and whether or not the two 3D reconstructions used were processed from a common reference. The reported resolution is shown as a black line. A curve is displayed for the half-bit criterion in addition to lines showing the 0.143 gold standard cut-off and 0.5 cut-off.

### 8.1 FSC [i](#)



\*Reported resolution corresponds to spatial frequency of 0.295  $\text{\AA}^{-1}$

## 8.2 Resolution estimates [i](#)

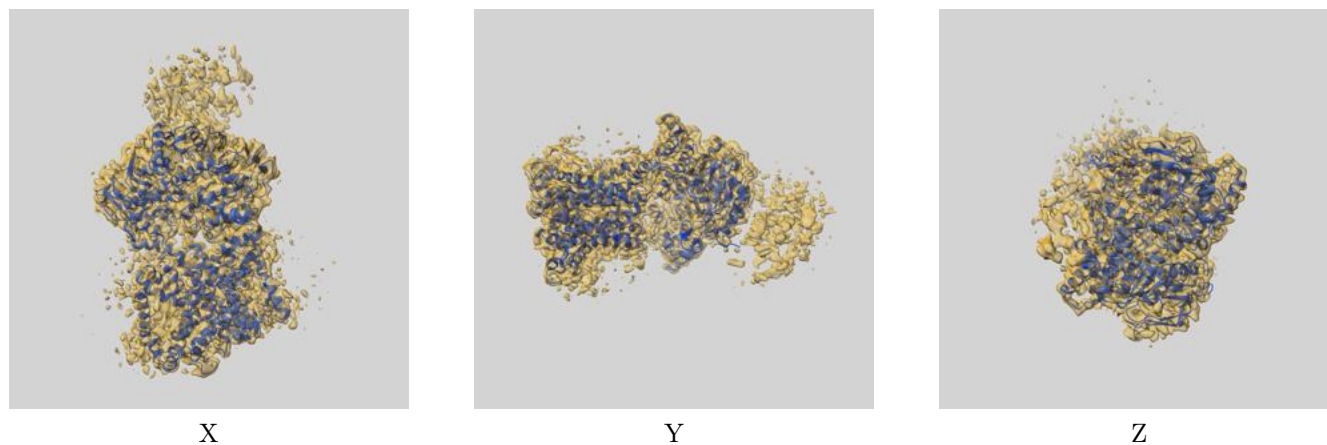
Resolution estimate (Å)	Estimation criterion (FSC cut-off)		
	0.143	0.5	Half-bit
Reported by author	3.39	-	-
Author-provided FSC curve	-	-	-
Unmasked-calculated*	4.17	6.81	4.25

\*Resolution estimate based on FSC curve calculated by comparison of deposited half-maps. The value from deposited half-maps intersecting FSC 0.143 CUT-OFF 4.17 differs from the reported value 3.39 by more than 10 %

## 9 Map-model fit [i](#)

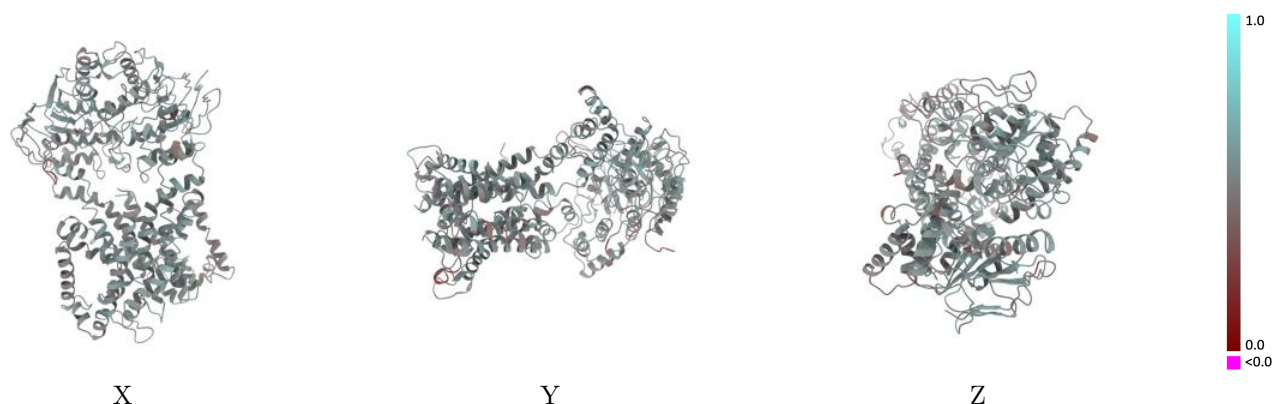
This section contains information regarding the fit between EMDB map EMD-63974 and PDB model 9UA0. Per-residue inclusion information can be found in [section 3](#) on [page 4](#).

### 9.1 Map-model overlay [i](#)



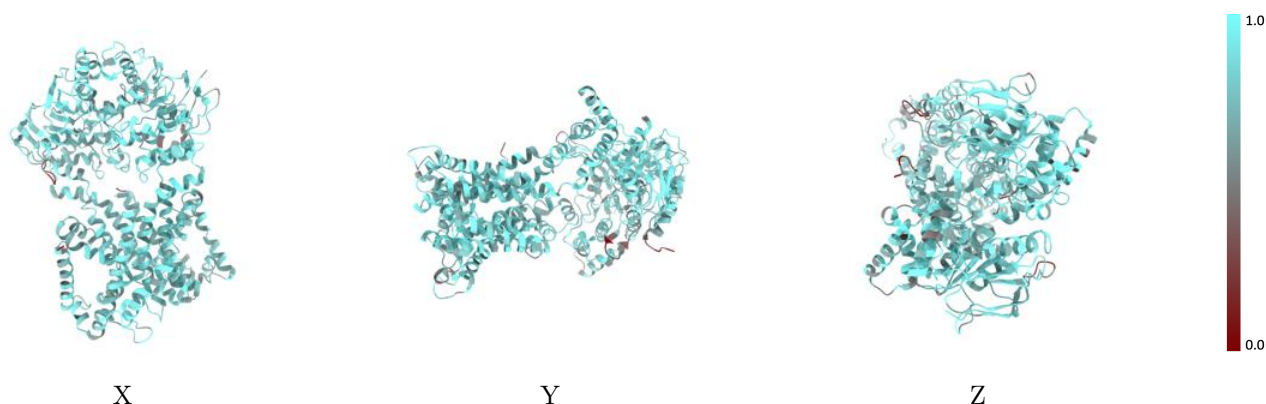
The images above show the 3D surface view of the map at the recommended contour level 0.23 at 50% transparency in yellow overlaid with a ribbon representation of the model coloured in blue. These images allow for the visual assessment of the quality of fit between the atomic model and the map.

## 9.2 Q-score mapped to coordinate model [i](#)



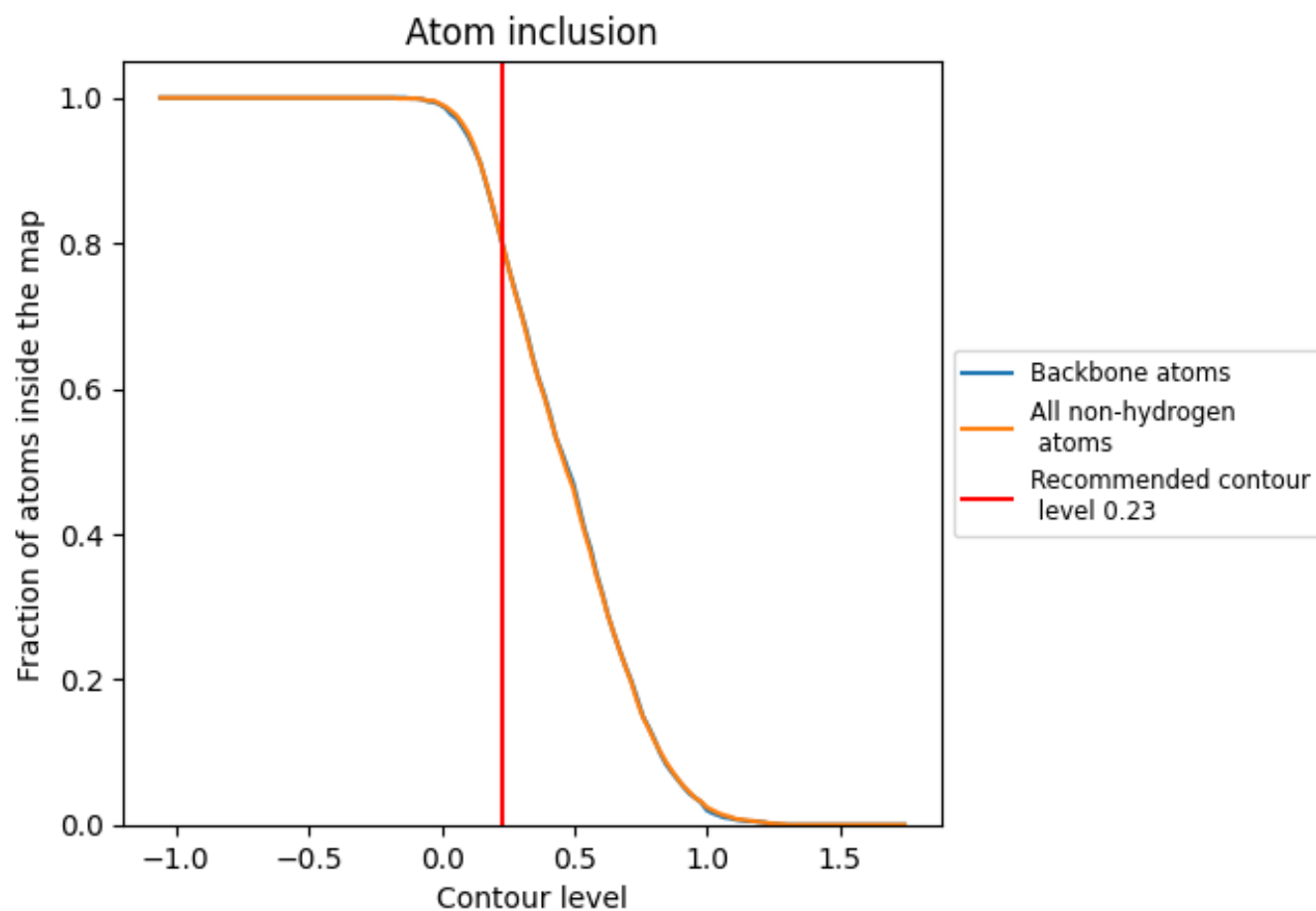
The images above show the model with each residue coloured according to its Q-score. This shows their resolvability in the map with higher Q-score values reflecting better resolvability. Please note: Q-score is calculating the resolvability of atoms, and thus high values are only expected at resolutions at which atoms can be resolved. Low Q-score values may therefore be expected for many entries.

## 9.3 Atom inclusion mapped to coordinate model [i](#)



The images above show the model with each residue coloured according to its atom inclusion. This shows to what extent they are inside the map at the recommended contour level (0.23).

## 9.4 Atom inclusion [i](#)



At the recommended contour level, 80% of all backbone atoms, 80% of all non-hydrogen atoms, are inside the map.

9.5 Map-model fit summary ⓘ

The table lists the average atom inclusion at the recommended contour level (0.23) and Q-score for the entire model and for each chain.

Chain	Atom inclusion	Q-score
All	<div></div> 0.7980	<div></div> 0.5090
A	<div></div> 0.8170	<div></div> 0.5160
B	<div></div> 0.8140	<div></div> 0.5040
C	<div></div> 0.8000	<div></div> 0.5090
D	<div></div> 0.7920	<div></div> 0.5060

