



## wwPDB EM Validation Summary Report ⓘ

May 19, 2026 – 04:24 PM EDT

PDB ID : 9OVO / pdb\_00009ovo  
EMDB ID : EMD-70904  
Title : Cryo-EM structure of HCoV-OC43-C2 Spike glycoprotein in complex with 9O-acetyl GD3 sialoglycan (Local refined D1 domain)  
Authors : Jin, M.; Rini, J.M.  
Deposited on : 2025-05-30  
Resolution : 1.98 Å(reported)

This is a wwPDB EM Validation Summary Report for a publicly released PDB entry.

We welcome your comments at [validation@mail.wwpdb.org](mailto:validation@mail.wwpdb.org)

A user guide is available at

<https://www.wwpdb.org/validation/2017/EMValidationReportHelp>  
with specific help available everywhere you see the ⓘ symbol.

The types of validation reports are described at

<http://www.wwpdb.org/validation/2017/FAQs#types>.

---

The following versions of software and data (see [references ⓘ](#)) were used in the production of this report:

EMDB validation analysis : 0.0.1.dev132  
Mogul : 2022.3.0, CSD as543be (2022)  
MolProbity : 4-5-2 with Phenix2.0  
Buster-report : wwPDB partial adaption of 1.1.7 (2018)  
Percentile statistics : 20250101.v01 (using entries in the PDB archive January 1st 2025)  
EM percentile statistics : 202505.v01 (Using data in the EMDB archive up until May 2025)  
MapQ : 1.9.13  
Ideal geometry (proteins) : Engh & Huber (2001)  
Ideal geometry (DNA, RNA) : Parkinson et al. (1996)  
Validation Pipeline (wwPDB-VP) : 2.49

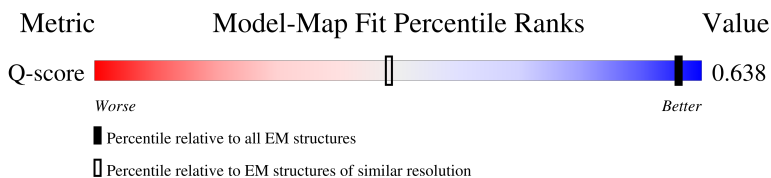
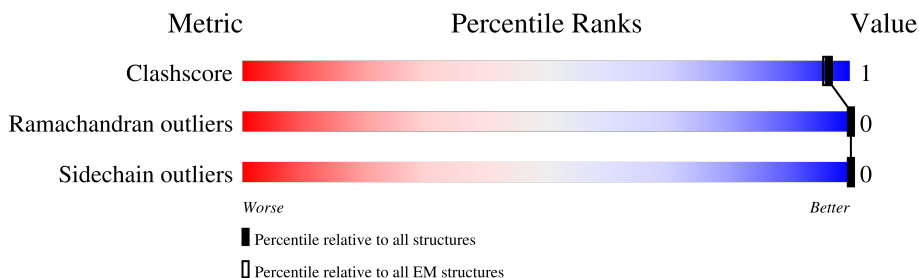
# 1 Overall quality at a glance

The following experimental techniques were used to determine the structure:

*ELECTRON MICROSCOPY*



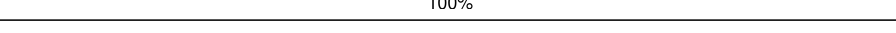
The reported resolution of this entry is 1.98 Å.

Percentile scores (ranging between 0-100) for global validation metrics of the entry are shown in the following graphic. The table shows the number of entries on which the scores are based.



Metric	Whole archive (#Entries)	EM structures (#Entries)	Similar EM resolution (#Entries, resolution range(Å))
Clashscore	229148	23984	-
Ramachandran outliers	224038	23583	-
Sidechain outliers	223484	23102	-
Q-score	-	25397	1383 ( 1.50 - 2.48 )

The table below summarises the geometric issues observed across the polymeric chains and their fit to the map. The red, orange, yellow and green segments of the bar indicate the fraction of residues that contain outliers for  $\geq 3$ , 2, 1 and 0 types of geometric quality criteria respectively. A grey segment represents the fraction of residues that are not modelled. The numeric value for each fraction is indicated below the corresponding segment, with a dot representing fractions  $\leq 5\%$ . The upper red bar (where present) indicates the fraction of residues that have poor fit to the EM map (all-atom inclusion  $< 40\%$ ). The numeric value is given above the bar.

Mol	Chain	Length	Quality of chain
1	A	1326	 21% 79%
2	B	2	 50% 100%
2	C	2	 100%

## 2 Entry composition

There are 5 unique types of molecules in this entry. The entry contains 4887 atoms, of which 2344 are hydrogens and 0 are deuteriums.

In the tables below, the AltConf column contains the number of residues with at least one atom in alternate conformation and the Trace column contains the number of residues modelled with at most 2 atoms.

- Molecule 1 is a protein called Spike glycoprotein.

Mol	Chain	Residues	Atoms						AltConf	Trace
1	A	285	Total	C	H	N	O	S	0	0
			4510	1497	2212	366	423	12		

There are 43 discrepancies between the modelled and reference sequences:

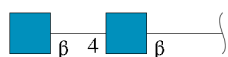
Chain	Residue	Modelled	Actual	Comment	Reference
A	1030	PRO	THR	conflict	UNP A0A1V0BZ81
A	1075	PRO	ALA	conflict	UNP A0A1V0BZ81
A	1076	PRO	LEU	conflict	UNP A0A1V0BZ81
A	1301	SER	-	expression tag	UNP A0A1V0BZ81
A	1302	GLY	-	expression tag	UNP A0A1V0BZ81
A	1303	GLY	-	expression tag	UNP A0A1V0BZ81
A	1304	TYR	-	expression tag	UNP A0A1V0BZ81
A	1305	ILE	-	expression tag	UNP A0A1V0BZ81
A	1306	PRO	-	expression tag	UNP A0A1V0BZ81
A	1307	GLU	-	expression tag	UNP A0A1V0BZ81
A	1308	ALA	-	expression tag	UNP A0A1V0BZ81
A	1309	PRO	-	expression tag	UNP A0A1V0BZ81
A	1310	ARG	-	expression tag	UNP A0A1V0BZ81
A	1311	ASP	-	expression tag	UNP A0A1V0BZ81
A	1312	GLY	-	expression tag	UNP A0A1V0BZ81
A	1313	GLN	-	expression tag	UNP A0A1V0BZ81
A	1314	ALA	-	expression tag	UNP A0A1V0BZ81
A	1315	TYR	-	expression tag	UNP A0A1V0BZ81
A	1316	VAL	-	expression tag	UNP A0A1V0BZ81
A	1317	ARG	-	expression tag	UNP A0A1V0BZ81
A	1318	LYS	-	expression tag	UNP A0A1V0BZ81
A	1319	ASP	-	expression tag	UNP A0A1V0BZ81
A	1320	GLY	-	expression tag	UNP A0A1V0BZ81
A	1321	GLU	-	expression tag	UNP A0A1V0BZ81
A	1322	TRP	-	expression tag	UNP A0A1V0BZ81
A	1323	VAL	-	expression tag	UNP A0A1V0BZ81
A	1324	LEU	-	expression tag	UNP A0A1V0BZ81
A	1325	LEU	-	expression tag	UNP A0A1V0BZ81

*Continued on next page...*

Continued from previous page...

Chain	Residue	Modelled	Actual	Comment	Reference
A	1326	SER	-	expression tag	UNP A0A1V0BZ81
A	1327	THR	-	expression tag	UNP A0A1V0BZ81
A	1328	PHE	-	expression tag	UNP A0A1V0BZ81
A	1329	LEU	-	expression tag	UNP A0A1V0BZ81
A	1330	ASN	-	expression tag	UNP A0A1V0BZ81
A	1331	SER	-	expression tag	UNP A0A1V0BZ81
A	1332	GLY	-	expression tag	UNP A0A1V0BZ81
A	1333	ARG	-	expression tag	UNP A0A1V0BZ81
A	1334	ALA	-	expression tag	UNP A0A1V0BZ81
A	1335	HIS	-	expression tag	UNP A0A1V0BZ81
A	1336	HIS	-	expression tag	UNP A0A1V0BZ81
A	1337	HIS	-	expression tag	UNP A0A1V0BZ81
A	1338	HIS	-	expression tag	UNP A0A1V0BZ81
A	1339	HIS	-	expression tag	UNP A0A1V0BZ81
A	1340	HIS	-	expression tag	UNP A0A1V0BZ81

- Molecule 2 is an oligosaccharide called 2-acetamido-2-deoxy-beta-D-glucopyranose-(1-4)-2-acetamido-2-deoxy-beta-D-glucopyranose.



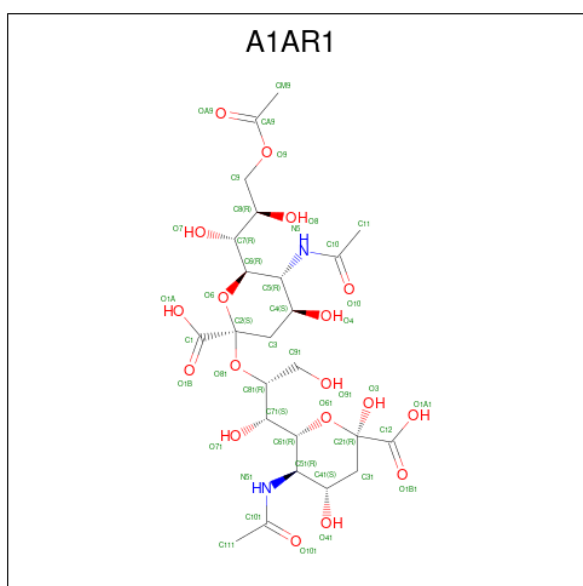
Mol	Chain	Residues	Atoms					AltConf	Trace
2	B	2	Total	C	H	N	O	0	0
			55	16	27	2	10		
2	C	2	Total	C	H	N	O	0	0
			55	16	27	2	10		

- Molecule 3 is 2-acetamido-2-deoxy-beta-D-glucopyranose (CCD ID: NAG) (formula: C<sub>8</sub>H<sub>15</sub>NO<sub>6</sub>).



Mol	Chain	Residues	Atoms					AltConf
3	A	1	Total	C	H	N	O	0
			28	8	14	1	5	
3	A	1	Total	C	H	N	O	0
			28	8	14	1	5	
3	A	1	Total	C	H	N	O	0
			28	8	14	1	5	

- Molecule 4 is 5-acetamido-8-O-(5-acetamido-9-O-acetyl-3,5-dideoxy-D-glycero- $\alpha$ -D-galacto-non-2-ulopyranonosyl)-3,5-dideoxy-D-glycero- $\alpha$ -D-galacto-non-2-ulopyranosonic acid (CCD ID: A1AR1) (formula:  $C_{24}H_{38}N_2O_{18}$ ) (labeled as "Ligand of Interest" by depositor).



Mol	Chain	Residues	Atoms					AltConf
4	A	1	Total	C	H	N	O	0
			80	24	36	2	18	

- Molecule 5 is water.

Mol	Chain	Residues	Atoms		AltConf
5	A	103	Total	O	0
			103	103	



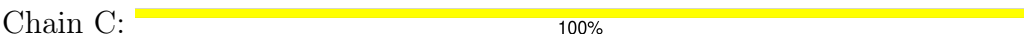
ILE	SER	ALA	SER	LEU	GLN	GLU	ILE	LEU	ARG	GLY	ASP	PRO	PRO	GLU	ALA	GLU	GLN	ILE	ILE	ASN	GLY	ARG	THR	ALA	LEU	ASN	GLY	ARG	THR	ALA	LEU	ASN	GLY	THR	VAL	GLN	GLN	THR	VAL	THR	TYR	VAL	VAL	PRO	THR	LYS	VAL	THR	ASP	ALA	THR	LEU	VAL	LYS	PHE	LEU	CYS	ASP	GLY	ILE	ALA	GLN	ALA	ASN	GLY	ARG	GLY	LYS	VAL	ASN	PRO	GLU	CYS					
VAL	LYS	SER	GLN	SER	VAL	SER	ASN	ARG	ILE	ASN	ASN	THR	THR	PHE	CYS	ARG	GLY	ASN	PRO	GLY	THR	TYR	ILE	ILE	ASN	GLY	THR	PHE	ILE	HIS	LEU	ASN	ASN	TYR	GLY	THR	VAL	GLN	ASP	PRO	GLU	VAL	GLN	THR	PRO	ILE	ALA	LEU	THR	VAL	LYS	VAL	THR	ALA	THR	LEU	VAL	LYS	PRO	GLY	LEU	CYS	ASP	GLY	ILE	ALA	GLN	ALA	ASN	GLY	ARG	GLY	LYS	VAL	ASN	PRO	GLU	CYS
SER	GLY	TYR	PHE	TRP	VAL	ASN	VAL	ASN	ASN	THR	THR	MET	TYR	THR	GLY	SER	GLY	LYS	ASP	TYR	TYR	TYR	PRO	ASN	GLU	THR	VAL	VAL	ASN	ASN	VAL	VAL	MET	ASN	SER	THR	CYS	GLU	ALA	VAL	ASN	THR	VAL	VAL	ASN	THR	LYS	VAL	THR	THR	ALA	PRO	TYR	VAL	VAL	MET	ASN	LEU	ASN	GLY	THR	LEU	ASN	THR	VAL	TYR	THR	ASP	PRO	GLY	LYS	VAL	GLU	SER				
LEU	ASP	GLN	TRP	PHE	GLY	ASN	GLN	THR	THR	VAL	LEU	ALA	ASP	ASP	LEU	SER	SER	LEU	LYS	ASP	TYR	TYR	ILE	TRP	TRP	VAL	THR	THR	LEU	PHE	LEU	ASP	LEU	ASN	THR	PHE	GLY	SER	SER	GLY	ARG	ALA	HIS	HIS	HIS	ILE	LYS	VAL	THR	LEU	ASN	THR	THR	GLY	THR	TYR	GLU	ASP	TYR	TYR	VAL	LYS	GLU	SER														
GLY	GLY	TYR	ILE	PRO	GLU	ALA	PRO	ARG	ASP	GLY	GLN	ALA	TYR	VAL	ARG	LYS	ASP	GLY	GLU	GLU	THR	THR	PHE	PHE	LEU	THR	THR	GLY	ARG	ALA	HIS	HIS	HIS	HIS	ILE	LYS	VAL	THR	LEU	ASN	THR	THR	GLY	THR	TYR	GLU	ASP	TYR	TYR	VAL	LYS	GLU	SER																									

● Molecule 2: 2-acetamido-2-deoxy-beta-D-glucopyranose-(1-4)-2-acetamido-2-deoxy-beta-D-glucopyranose



MAG1
MAG2

● Molecule 2: 2-acetamido-2-deoxy-beta-D-glucopyranose-(1-4)-2-acetamido-2-deoxy-beta-D-glucopyranose



MAG1
MAG2



## 4 Experimental information

Property	Value	Source
EM reconstruction method	SINGLE PARTICLE	Depositor
Imposed symmetry	POINT, C1	Depositor
Number of particles used	4438041	Depositor
Resolution determination method	FSC 0.143 CUT-OFF	Depositor
CTF correction method	PHASE FLIPPING AND AMPLITUDE CORRECTION	Depositor
Microscope	TFS KRIOS	Depositor
Voltage (kV)	300	Depositor
Electron dose ( $e^-/\text{\AA}^2$ )	36	Depositor
Minimum defocus (nm)	1000	Depositor
Maximum defocus (nm)	2000	Depositor
Magnification	120000	Depositor
Image detector	FEI FALCON IV (4k x 4k)	Depositor
Maximum map value	1.019	Depositor
Minimum map value	-0.506	Depositor
Average map value	0.000	Depositor
Map value standard deviation	0.011	Depositor
Recommended contour level	0.13	Depositor
Map size (Å)	329.6, 329.6, 329.6	wwPDB
Map dimensions	400, 400, 400	wwPDB
Map angles (°)	90.0, 90.0, 90.0	wwPDB
Pixel spacing (Å)	0.824, 0.824, 0.824	Depositor

## 5 Model quality [i](#)

### 5.1 Standard geometry [i](#)

Bond lengths and bond angles in the following residue types are not validated in this section: A1AR1, NAG

The Z score for a bond length (or angle) is the number of standard deviations the observed value is removed from the expected value. A bond length (or angle) with  $|Z| > 5$  is considered an outlier worth inspection. RMSZ is the root-mean-square of all Z scores of the bond lengths (or angles).

Mol	Chain	Bond lengths		Bond angles	
		RMSZ	$\# Z  > 5$	RMSZ	$\# Z  > 5$
1	A	0.69	0/2367	1.13	1/3229 (0.0%)

There are no bond length outliers.

All (1) bond angle outliers are listed below:

Mol	Chain	Res	Type	Atoms	Z	Observed( $^{\circ}$ )	Ideal( $^{\circ}$ )
1	A	81	ARG	NE-CZ-NH2	5.09	123.78	119.20

There are no chirality outliers.

There are no planarity outliers.

### 5.2 Too-close contacts [i](#)

In the following table, the Non-H and H(model) columns list the number of non-hydrogen atoms and hydrogen atoms in the chain respectively. The H(added) column lists the number of hydrogen atoms added and optimized by MolProbity. The Clashes column lists the number of clashes within the asymmetric unit, whereas Symm-Clashes lists symmetry-related clashes.

Mol	Chain	Non-H	H(model)	H(added)	Clashes	Symm-Clashes
1	A	2298	2212	2209	4	0
2	B	28	27	25	0	0
2	C	28	27	25	0	0
3	A	42	42	39	0	0
4	A	44	36	0	0	0
5	A	103	0	0	4	0
All	All	2543	2344	2298	4	0

The all-atom clashscore is defined as the number of clashes found per 1000 atoms (including hydrogen atoms). The all-atom clashscore for this structure is 1.

All (4) close contacts within the same asymmetric unit are listed below, sorted by their clash magnitude.

Atom-1	Atom-2	Interatomic distance (Å)	Clash overlap (Å)
1:A:49:THR:HG22	5:A:1560:HOH:O	1.80	0.80
1:A:106:ASN:OD1	5:A:1501:HOH:O	2.18	0.55
1:A:45:THR:HG23	5:A:1551:HOH:O	2.15	0.45
1:A:81:ARG:HD3	5:A:1558:HOH:O	2.17	0.43

There are no symmetry-related clashes.

## 5.3 Torsion angles [i](#)

### 5.3.1 Protein backbone [i](#)

In the following table, the Percentiles column shows the percent Ramachandran outliers of the chain as a percentile score with respect to all PDB entries followed by that with respect to all EM entries.

The Analysed column shows the number of residues for which the backbone conformation was analysed, and the total number of residues.

Mol	Chain	Analysed	Favoured	Allowed	Outliers	Percentiles	
1	A	283/1326 (21%)	269 (95%)	14 (5%)	0	100	100

There are no Ramachandran outliers to report.

### 5.3.2 Protein sidechains [i](#)

In the following table, the Percentiles column shows the percent sidechain outliers of the chain as a percentile score with respect to all PDB entries followed by that with respect to all EM entries.

The Analysed column shows the number of residues for which the sidechain conformation was analysed, and the total number of residues.

Mol	Chain	Analysed	Rotameric	Outliers	Percentiles	
1	A	256/1160 (22%)	256 (100%)	0	100	100

There are no protein residues with a non-rotameric sidechain to report.

Sometimes sidechains can be flipped to improve hydrogen bonding and reduce clashes. All (5) such sidechains are listed below:

Mol	Chain	Res	Type
1	A	70	ASN
1	A	146	GLN
1	A	182	HIS
1	A	187	ASN
1	A	194	HIS

### 5.3.3 RNA ⓘ

There are no RNA molecules in this entry.

## 5.4 Non-standard residues in protein, DNA, RNA chains ⓘ

There are no non-standard protein/DNA/RNA residues in this entry.

## 5.5 Carbohydrates ⓘ

4 monosaccharides are modelled in this entry.

In the following table, the Counts columns list the number of bonds (or angles) for which Mogul statistics could be retrieved, the number of bonds (or angles) that are observed in the model and the number of bonds (or angles) that are defined in the Chemical Component Dictionary. The Link column lists molecule types, if any, to which the group is linked. The Z score for a bond length (or angle) is the number of standard deviations the observed value is removed from the expected value. A bond length (or angle) with  $|Z| > 2$  is considered an outlier worth inspection. RMSZ is the root-mean-square of all Z scores of the bond lengths (or angles).

Mol	Type	Chain	Res	Link	Bond lengths			Bond angles		
					Counts	RMSZ	$\# Z  > 2$	Counts	RMSZ	$\# Z  > 2$
2	NAG	B	1	2,1	14,14,15	1.16	1 (7%)	17,19,21	0.62	0
2	NAG	B	2	2	14,14,15	1.23	1 (7%)	17,19,21	0.84	1 (5%)
2	NAG	C	1	2,1	14,14,15	1.07	1 (7%)	17,19,21	0.71	0
2	NAG	C	2	2	14,14,15	1.23	1 (7%)	17,19,21	0.89	1 (5%)

In the following table, the Chirals column lists the number of chiral outliers, the number of chiral centers analysed, the number of these observed in the model and the number defined in the Chemical Component Dictionary. Similar counts are reported in the Torsion and Rings columns. '–' means no outliers of that kind were identified.

Mol	Type	Chain	Res	Link	Chirals	Torsions	Rings
2	NAG	B	1	2,1	–	0/6/23/26	0/1/1/1
2	NAG	B	2	2	–	0/6/23/26	0/1/1/1

*Continued on next page...*

*Continued from previous page...*

Mol	Type	Chain	Res	Link	Chirals	Torsions	Rings
2	NAG	C	1	2,1	-	0/6/23/26	0/1/1/1
2	NAG	C	2	2	-	0/6/23/26	0/1/1/1

All (4) bond length outliers are listed below:

Mol	Chain	Res	Type	Atoms	Z	Observed(Å)	Ideal(Å)
2	C	2	NAG	O5-C5	2.87	1.49	1.43
2	B	2	NAG	O5-C5	2.76	1.48	1.43
2	B	1	NAG	O5-C5	2.09	1.47	1.43
2	C	1	NAG	O5-C5	2.04	1.47	1.43

All (2) bond angle outliers are listed below:

Mol	Chain	Res	Type	Atoms	Z	Observed(°)	Ideal(°)
2	C	2	NAG	C1-O5-C5	2.54	115.59	112.19
2	B	2	NAG	C1-O5-C5	2.34	115.32	112.19

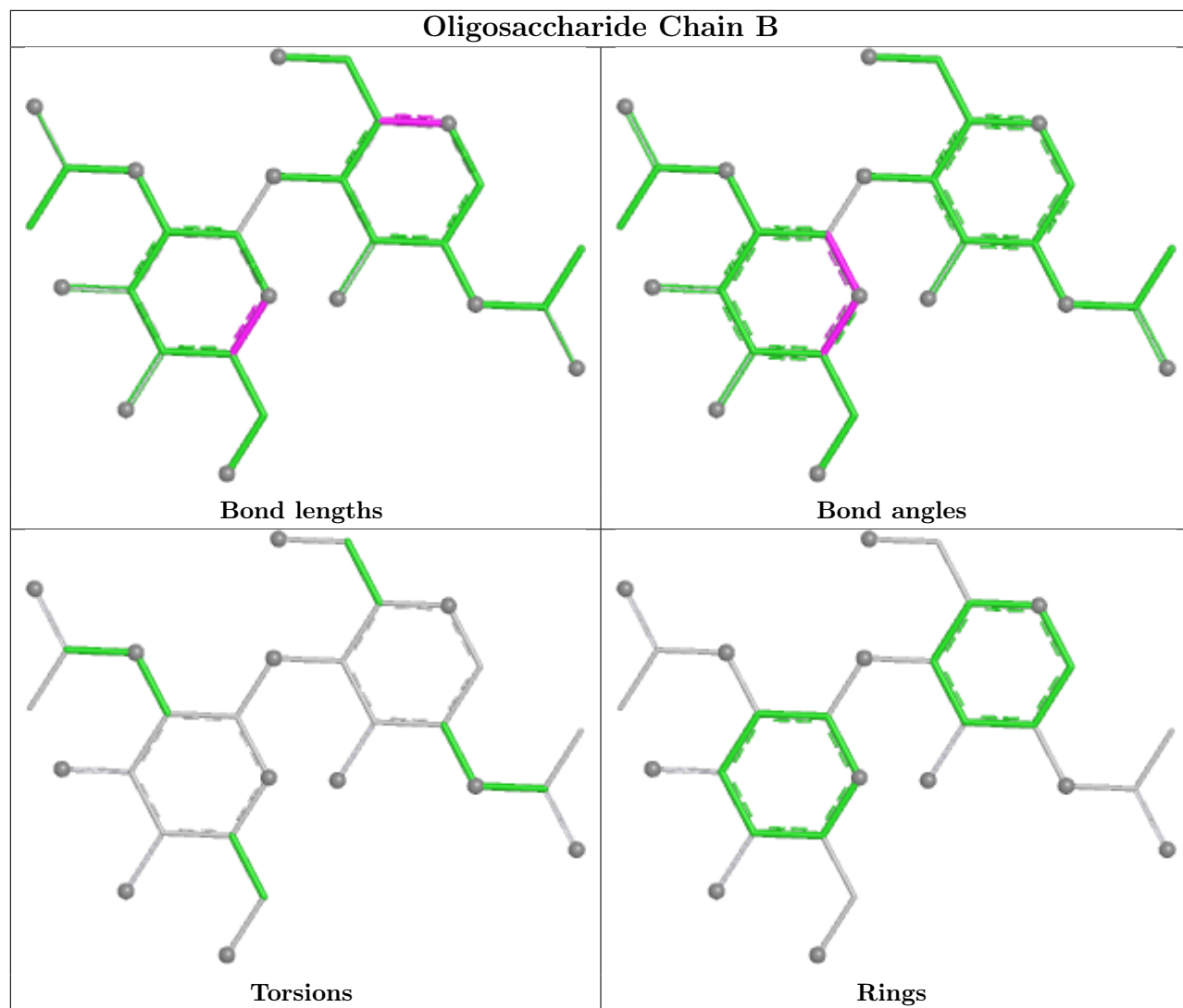
There are no chirality outliers.

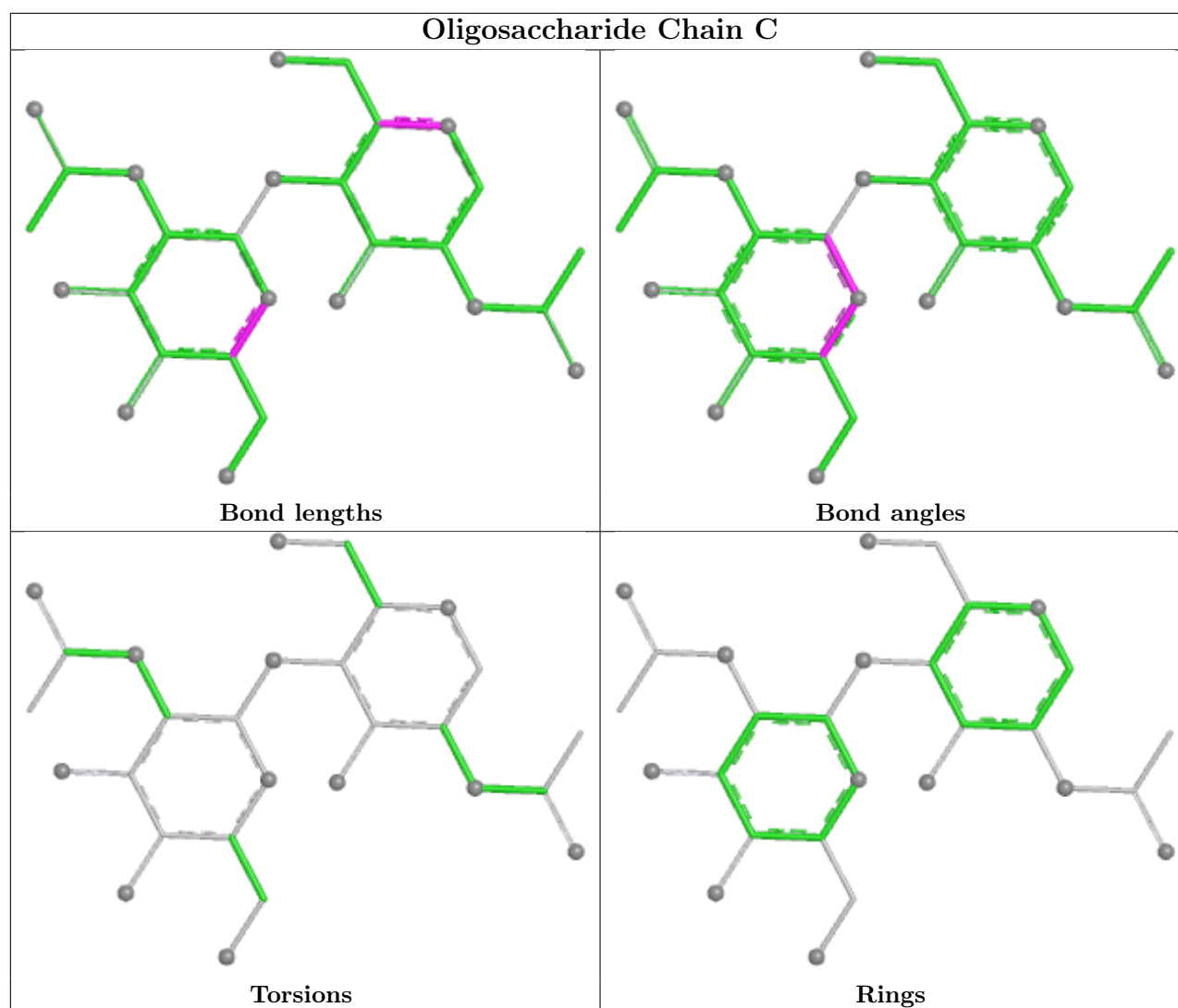
There are no torsion outliers.

There are no ring outliers.

No monomer is involved in short contacts.

The following is a two-dimensional graphical depiction of Mogul quality analysis of bond lengths, bond angles, torsion angles, and ring geometry for oligosaccharide.





## 5.6 Ligand geometry [i](#)

4 ligands are modelled in this entry.

In the following table, the Counts columns list the number of bonds (or angles) for which Mogul statistics could be retrieved, the number of bonds (or angles) that are observed in the model and the number of bonds (or angles) that are defined in the Chemical Component Dictionary. The Link column lists molecule types, if any, to which the group is linked. The Z score for a bond length (or angle) is the number of standard deviations the observed value is removed from the expected value. A bond length (or angle) with  $|Z| > 2$  is considered an outlier worth inspection. RMSZ is the root-mean-square of all Z scores of the bond lengths (or angles).

Mol	Type	Chain	Res	Link	Bond lengths			Bond angles		
					Counts	RMSZ	$\# Z  > 2$	Counts	RMSZ	$\# Z  > 2$
3	NAG	A	1403	1	14,14,15	1.29	2 (14%)	17,19,21	0.99	1 (5%)
3	NAG	A	1402	1	14,14,15	1.18	2 (14%)	17,19,21	1.03	1 (5%)
4	A1AR1	A	1404	-	44,45,45	1.73	12 (27%)	55,67,67	1.43	6 (10%)

Mol	Type	Chain	Res	Link	Bond lengths			Bond angles		
					Counts	RMSZ	# Z  > 2	Counts	RMSZ	# Z  > 2
3	NAG	A	1401	1	14,14,15	1.21	1 (7%)	17,19,21	0.75	0

In the following table, the Chirals column lists the number of chiral outliers, the number of chiral centers analysed, the number of these observed in the model and the number defined in the Chemical Component Dictionary. Similar counts are reported in the Torsion and Rings columns. '-' means no outliers of that kind were identified.

Mol	Type	Chain	Res	Link	Chirals	Torsions	Rings
3	NAG	A	1403	1	-	2/6/23/26	0/1/1/1
3	NAG	A	1402	1	-	0/6/23/26	0/1/1/1
4	A1AR1	A	1404	-	-	4/47/84/84	0/2/2/2
3	NAG	A	1401	1	-	1/6/23/26	0/1/1/1

The worst 5 of 17 bond length outliers are listed below:

Mol	Chain	Res	Type	Atoms	Z	Observed(Å)	Ideal(Å)
4	A	1404	A1AR1	C41-C51	4.74	1.57	1.53
4	A	1404	A1AR1	C21-C12	4.55	1.60	1.53
4	A	1404	A1AR1	C31-C21	3.73	1.56	1.51
4	A	1404	A1AR1	C3-C2	2.96	1.56	1.52
3	A	1401	NAG	O5-C5	2.92	1.49	1.43

The worst 5 of 8 bond angle outliers are listed below:

Mol	Chain	Res	Type	Atoms	Z	Observed(°)	Ideal(°)
4	A	1404	A1AR1	O61-C61-C51	-6.00	104.35	109.84
4	A	1404	A1AR1	O6-C2-C3	-3.46	106.69	111.35
4	A	1404	A1AR1	O6-C6-C5	-2.95	107.14	109.84
4	A	1404	A1AR1	O1B1-C12-C21	-2.91	119.00	123.85
3	A	1402	NAG	C1-O5-C5	2.73	115.85	112.19

There are no chirality outliers.

5 of 7 torsion outliers are listed below:

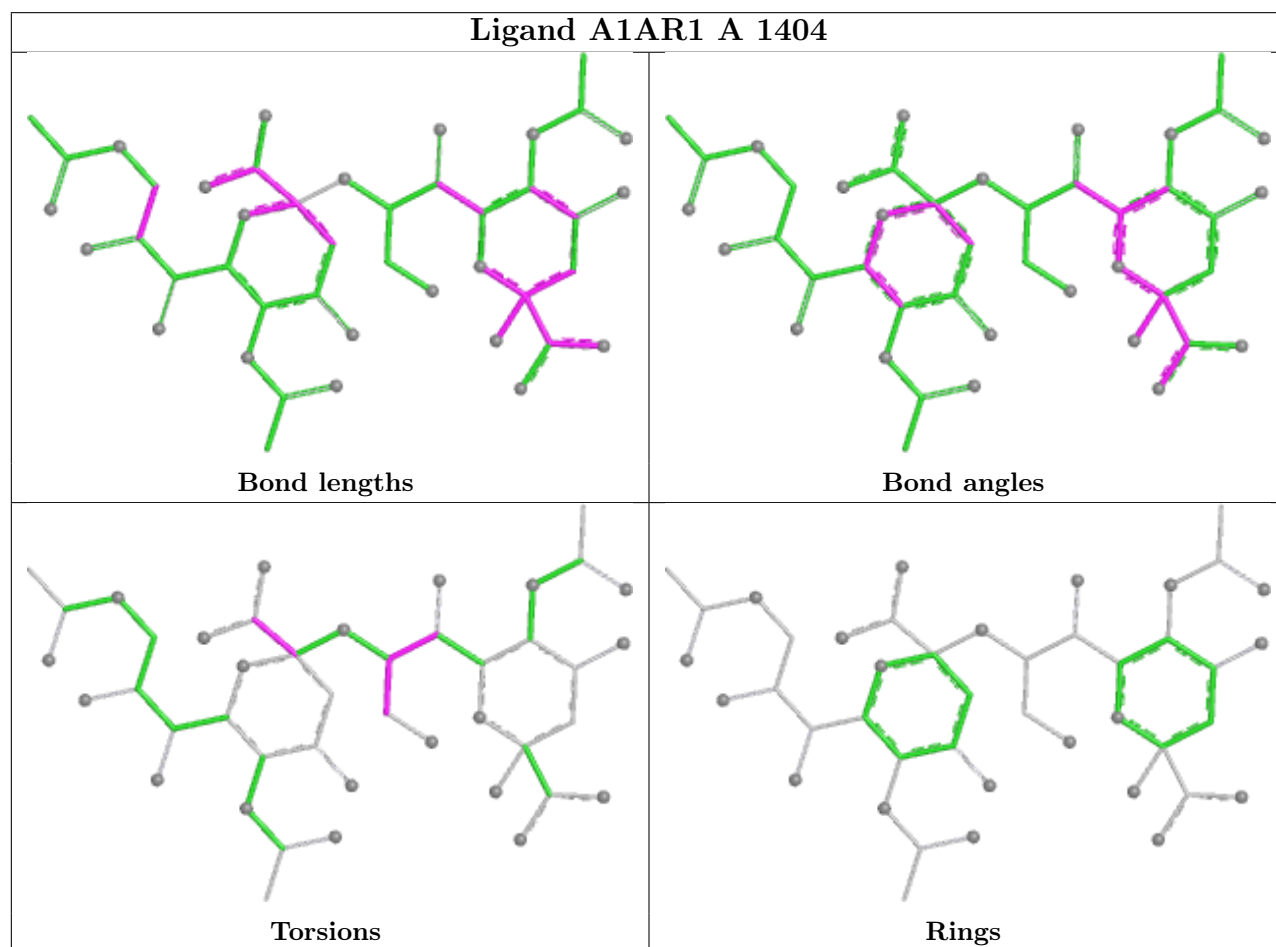
Mol	Chain	Res	Type	Atoms
4	A	1404	A1AR1	O1A-C1-C2-O81
4	A	1404	A1AR1	C71-C81-C91-O91
4	A	1404	A1AR1	O81-C81-C91-O91
3	A	1403	NAG	C1-C2-N2-C7
3	A	1403	NAG	C3-C2-N2-C7



There are no ring outliers.

No monomer is involved in short contacts.

The following is a two-dimensional graphical depiction of Mogul quality analysis of bond lengths, bond angles, torsion angles, and ring geometry for all instances of the Ligand of Interest. In addition, ligands with molecular weight > 250 and outliers as shown on the validation Tables will also be included. For torsion angles, if less than 5% of the Mogul distribution of torsion angles is within 10 degrees of the torsion angle in question, then that torsion angle is considered an outlier. Any bond that is central to one or more torsion angles identified as an outlier by Mogul will be highlighted in the graph. For rings, the root-mean-square deviation (RMSD) between the ring in question and similar rings identified by Mogul is calculated over all ring torsion angles. If the average RMSD is greater than 60 degrees and the minimal RMSD between the ring in question and any Mogul-identified rings is also greater than 60 degrees, then that ring is considered an outlier. The outliers are highlighted in purple. The color gray indicates Mogul did not find sufficient equivalents in the CSD to analyse the geometry.



## 5.7 Other polymers ⓘ

There are no such residues in this entry.

## 5.8 Polymer linkage issues ⓘ

There are no chain breaks in this entry.

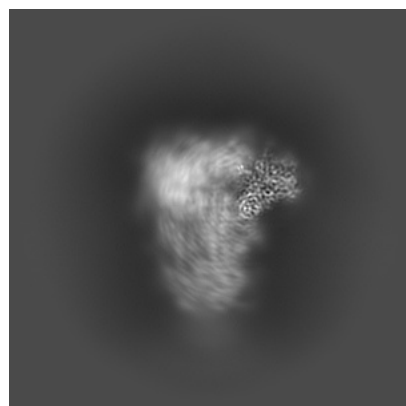
## 6 Map visualisation [i](#)

This section contains visualisations of the EMDB entry EMD-70904. These allow visual inspection of the internal detail of the map and identification of artifacts.

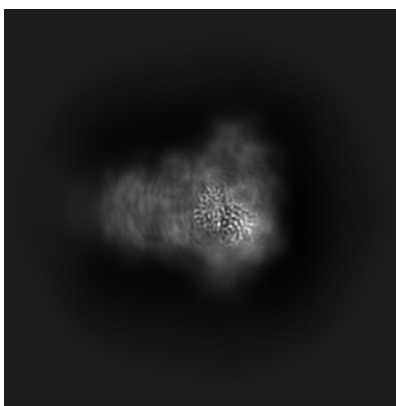
Images derived from a raw map, generated by summing the deposited half-maps, are presented below the corresponding image components of the primary map to allow further visual inspection and comparison with those of the primary map.

### 6.1 Orthogonal projections [i](#)

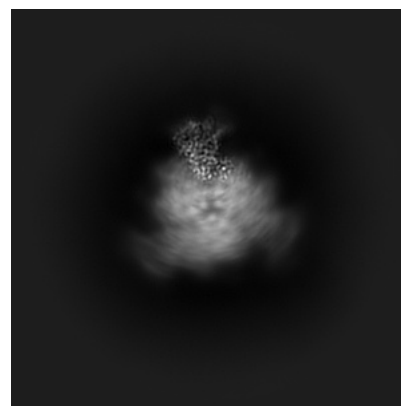
#### 6.1.1 Primary map



X

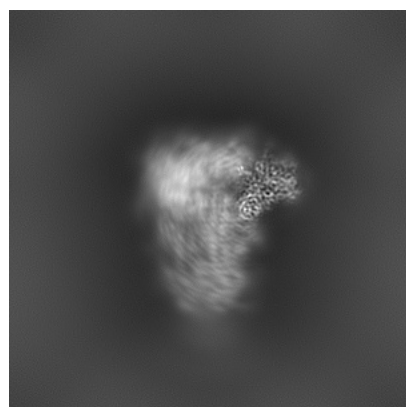


Y

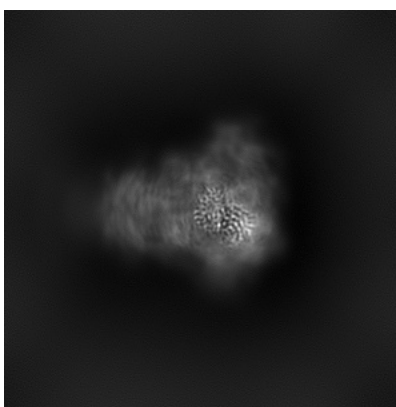


Z

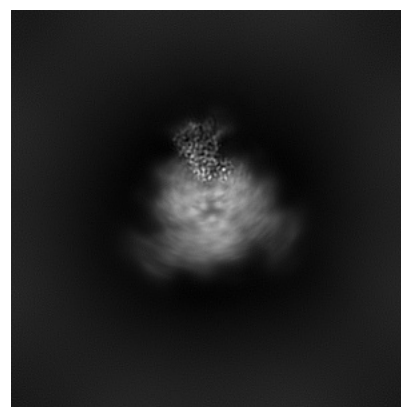
#### 6.1.2 Raw map



X



Y

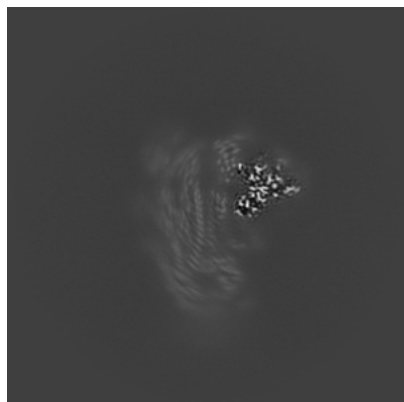


Z

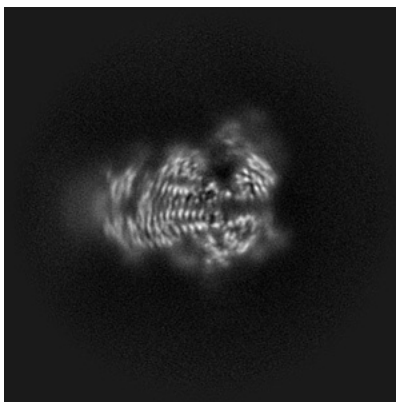
The images above show the map projected in three orthogonal directions.

## 6.2 Central slices [i](#)

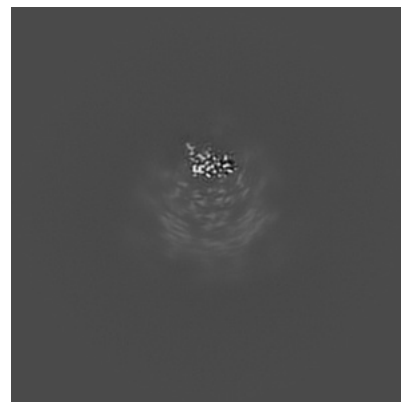
### 6.2.1 Primary map



X Index: 200

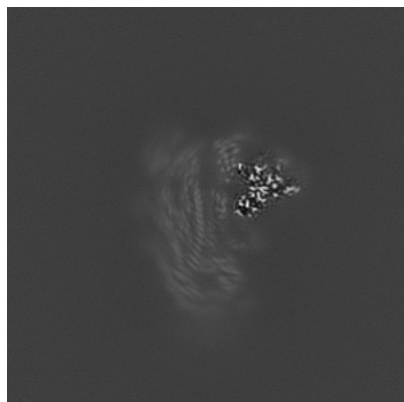


Y Index: 200

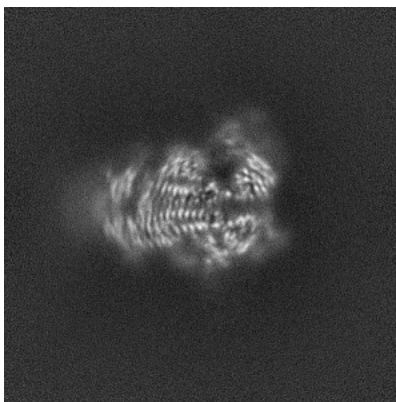


Z Index: 200

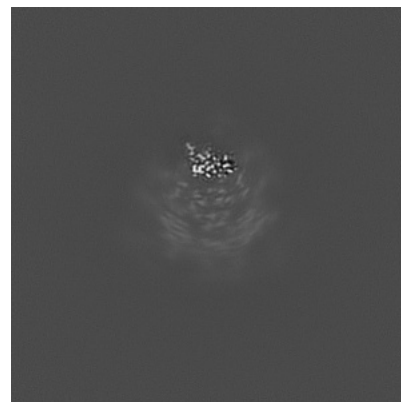
### 6.2.2 Raw map



X Index: 200



Y Index: 200

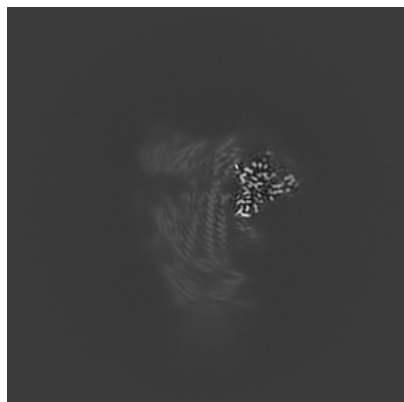


Z Index: 200

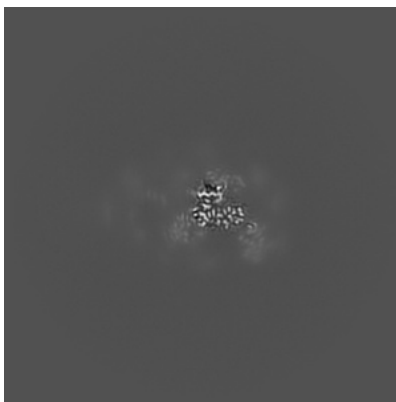
The images above show central slices of the map in three orthogonal directions.

## 6.3 Largest variance slices [i](#)

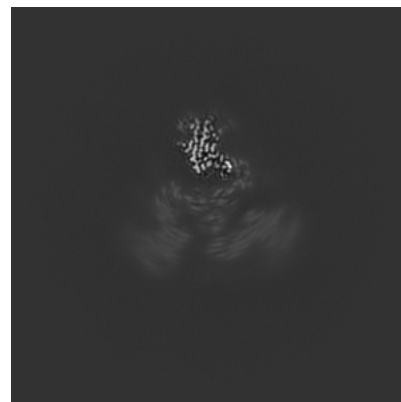
### 6.3.1 Primary map



X Index: 192

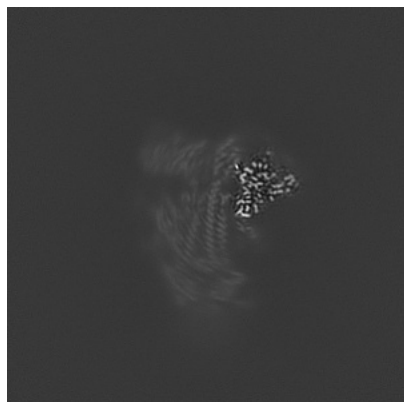


Y Index: 240

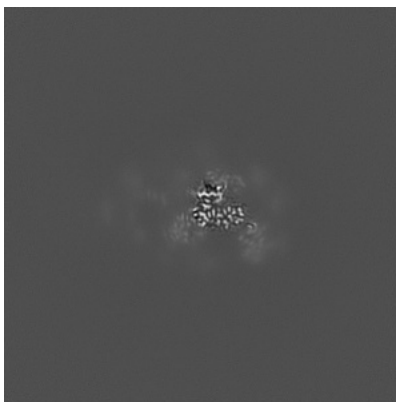


Z Index: 214

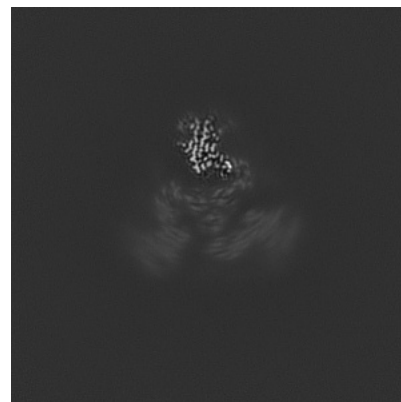
### 6.3.2 Raw map



X Index: 192



Y Index: 240

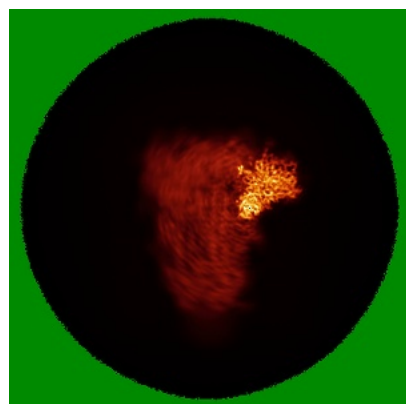


Z Index: 214

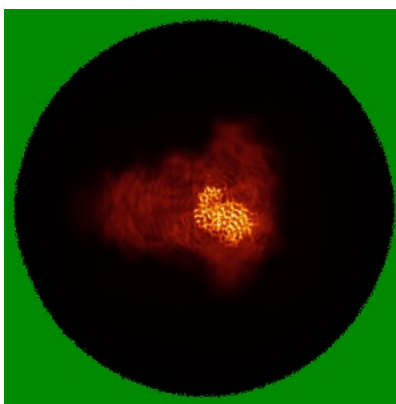
The images above show the largest variance slices of the map in three orthogonal directions.

## 6.4 Orthogonal standard-deviation projections (False-color) [i](#)

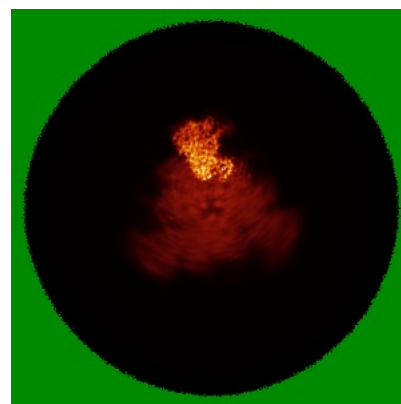
### 6.4.1 Primary map



X

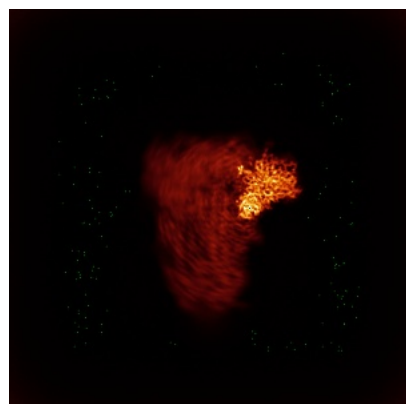


Y

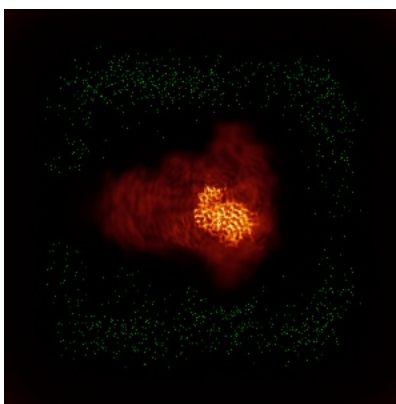


Z

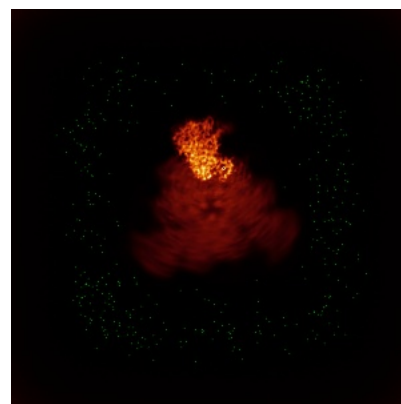
### 6.4.2 Raw map



X



Y



Z

The images above show the map standard deviation projections with false color in three orthogonal directions. Minimum values are shown in green, max in blue, and dark to light orange shades represent small to large values respectively.

## 6.5 Orthogonal surface views [i](#)

### 6.5.1 Primary map



The images above show the 3D surface view of the map at the recommended contour level 0.13. These images, in conjunction with the slice images, may facilitate assessment of whether an appropriate contour level has been provided.

### 6.5.2 Raw map



These images show the 3D surface of the raw map. The raw map's contour level was selected so that its surface encloses the same volume as the primary map does at its recommended contour level.

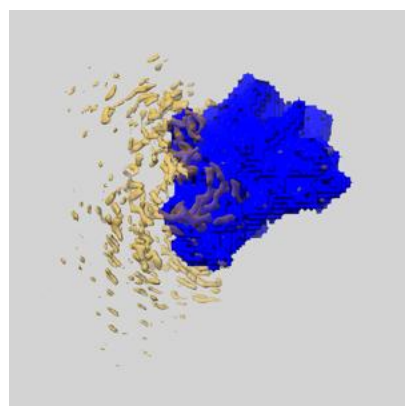
## 6.6 Mask visualisation [i](#)

This section shows the 3D surface view of the primary map at 50% transparency overlaid with the specified mask at 0% transparency

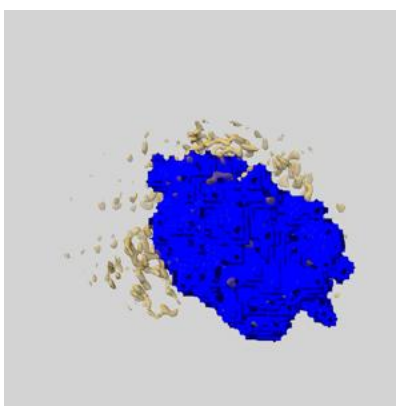
A mask typically either:

- Encompasses the whole structure
- Separates out a domain, a functional unit, a monomer or an area of interest from a larger structure

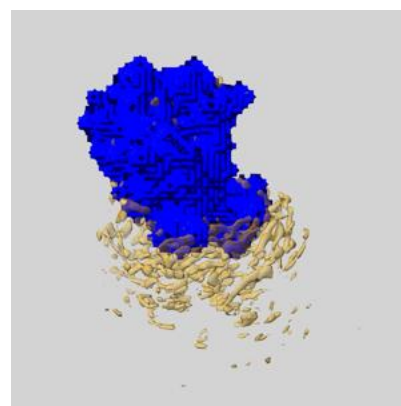
### 6.6.1 emd\_70904\_msk\_1.map [i](#)



X



Y



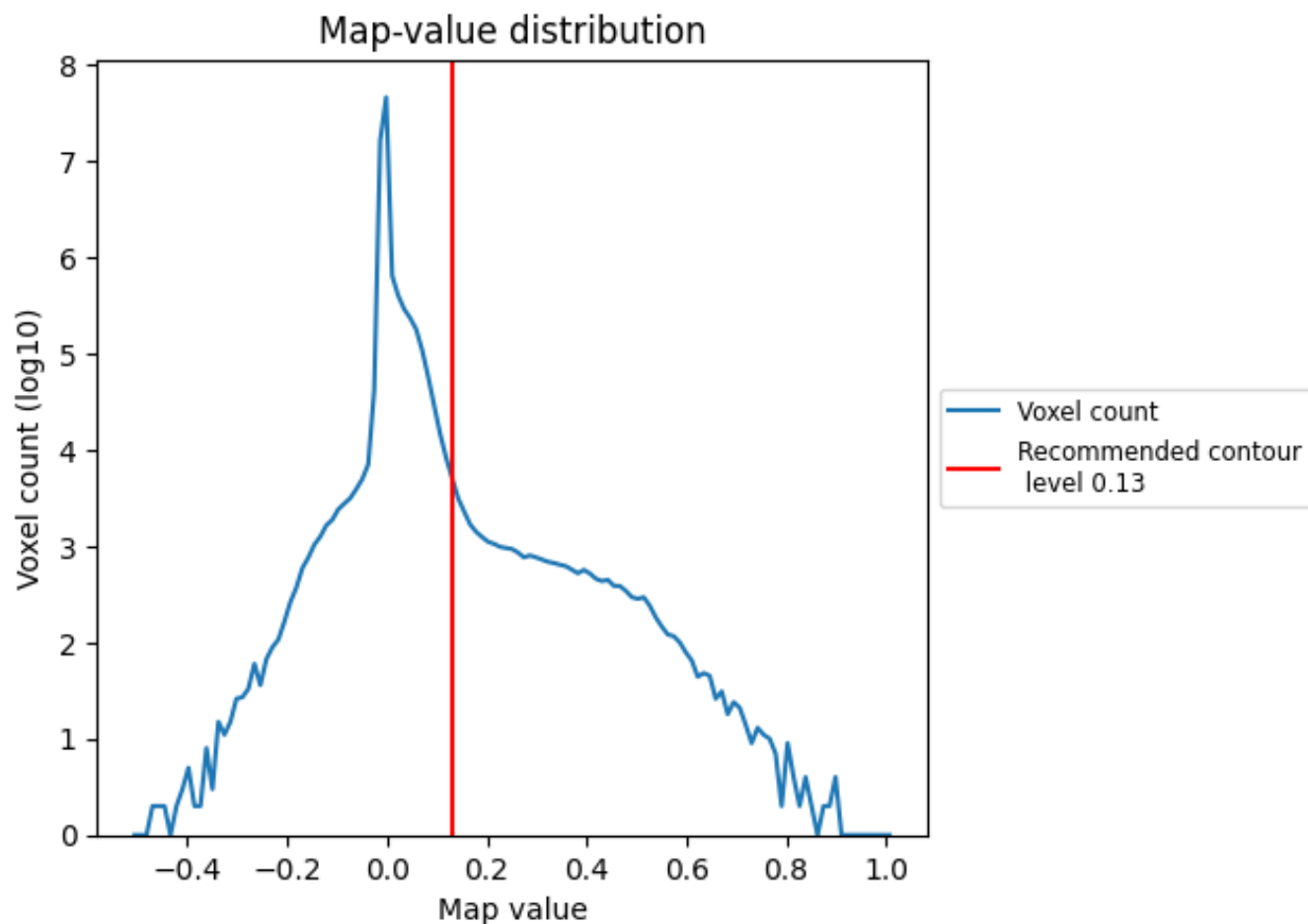
Z



## 7 Map analysis [i](#)

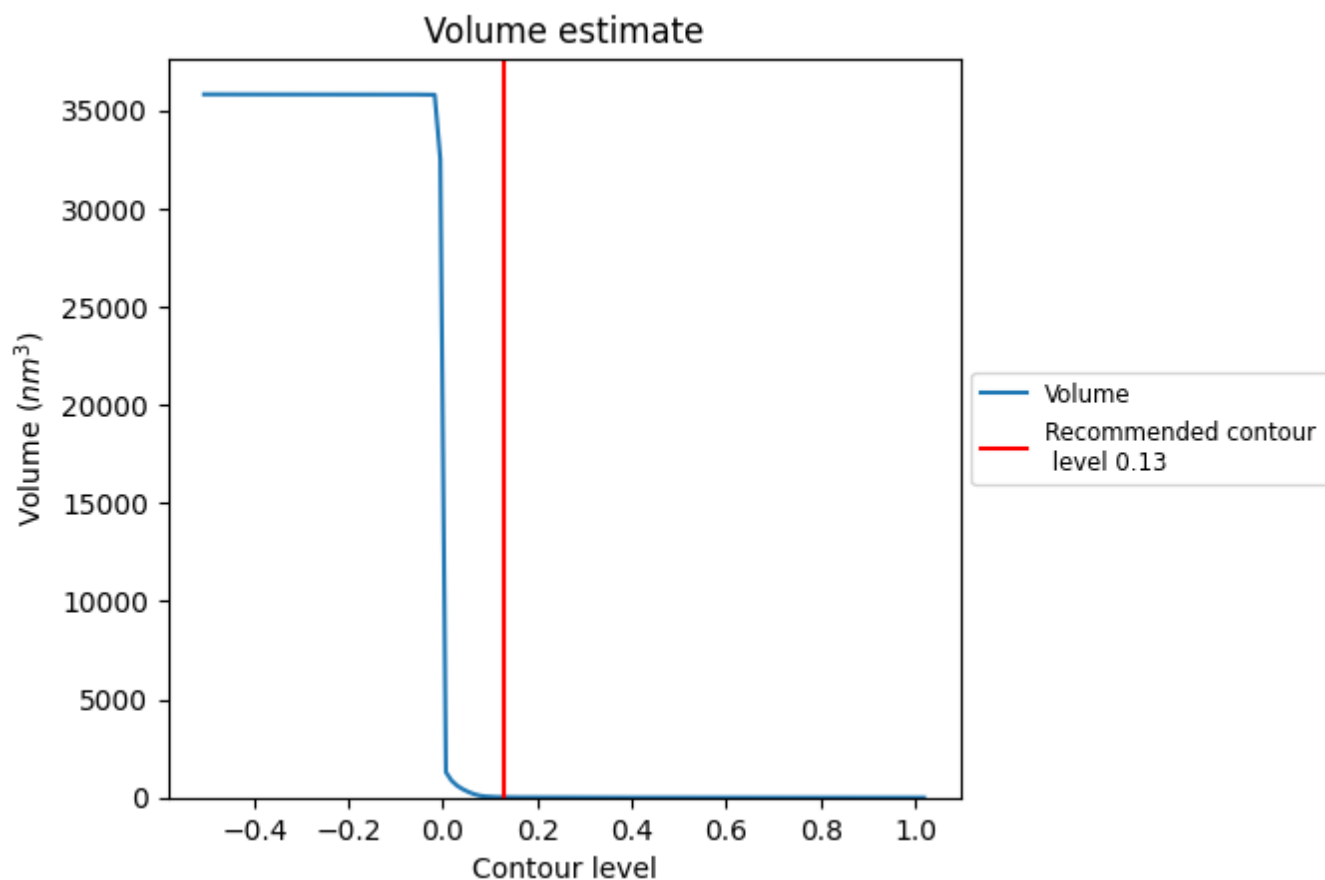
This section contains the results of statistical analysis of the map.

### 7.1 Map-value distribution [i](#)



The map-value distribution is plotted in 128 intervals along the x-axis. The y-axis is logarithmic. A spike in this graph at zero usually indicates that the volume has been masked.

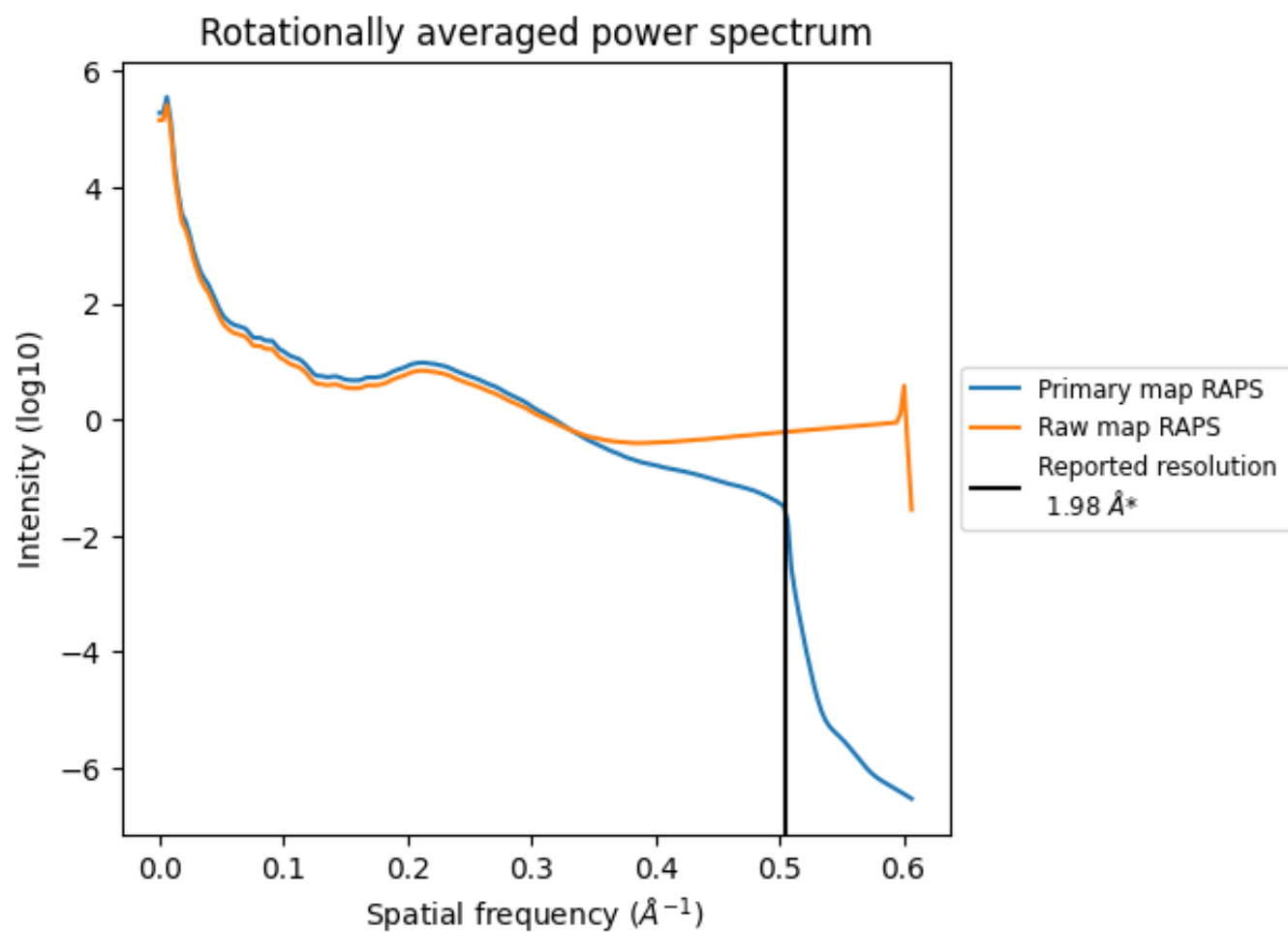
## 7.2 Volume estimate [i](#)



The volume at the recommended contour level is 19 nm<sup>3</sup>; this corresponds to an approximate mass of 17 kDa.

The volume estimate graph shows how the enclosed volume varies with the contour level. The recommended contour level is shown as a vertical line and the intersection between the line and the curve gives the volume of the enclosed surface at the given level.

### 7.3 Rotationally averaged power spectrum ⓘ

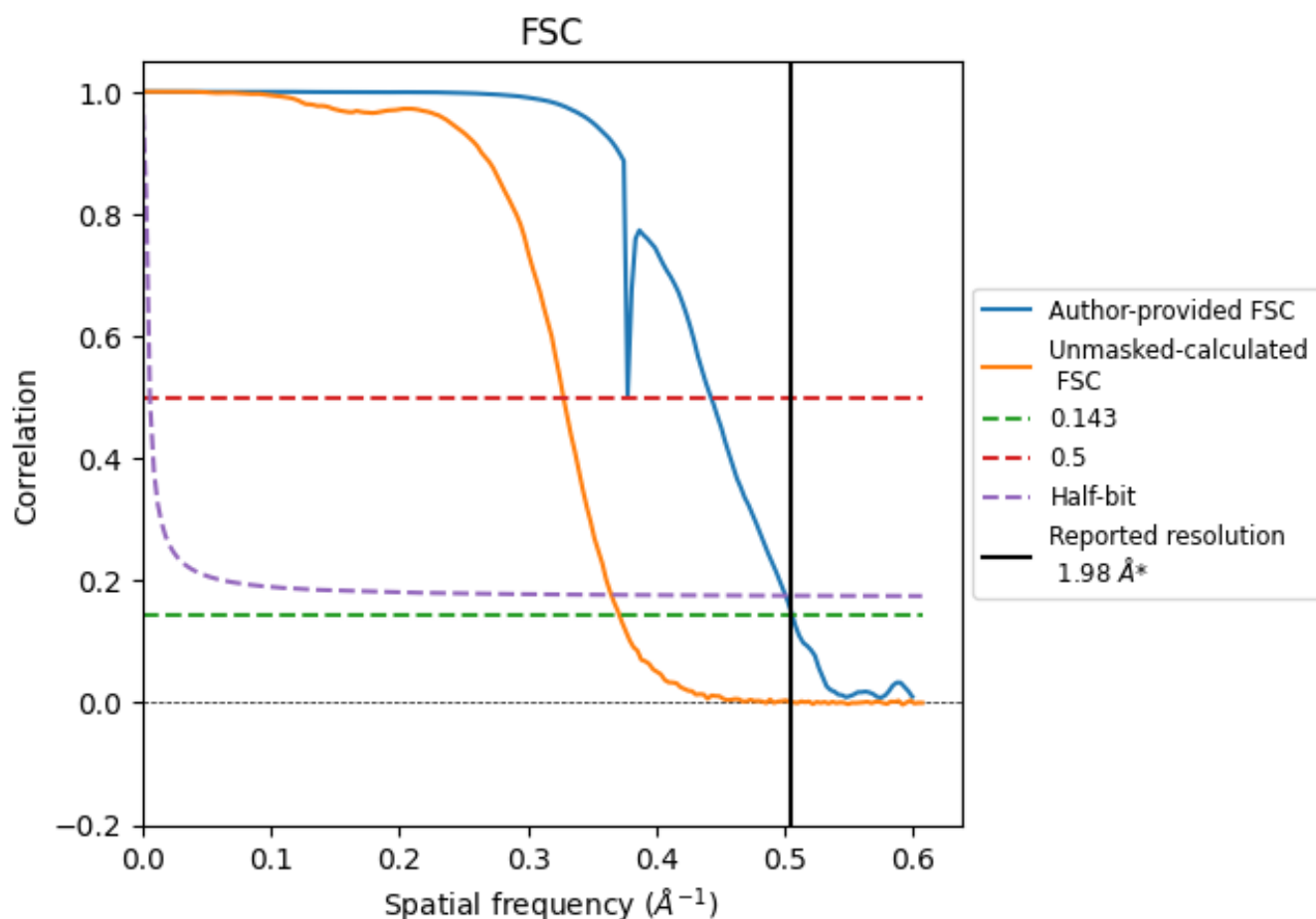


\*Reported resolution corresponds to spatial frequency of 0.505 Å<sup>-1</sup>

## 8 Fourier-Shell correlation [i](#)

Fourier-Shell Correlation (FSC) is the most commonly used method to estimate the resolution of single-particle and subtomogram-averaged maps. The shape of the curve depends on the imposed symmetry, mask and whether or not the two 3D reconstructions used were processed from a common reference. The reported resolution is shown as a black line. A curve is displayed for the half-bit criterion in addition to lines showing the 0.143 gold standard cut-off and 0.5 cut-off.

### 8.1 FSC [i](#)



\*Reported resolution corresponds to spatial frequency of  $0.505 \text{ \AA}^{-1}$

## 8.2 Resolution estimates [i](#)

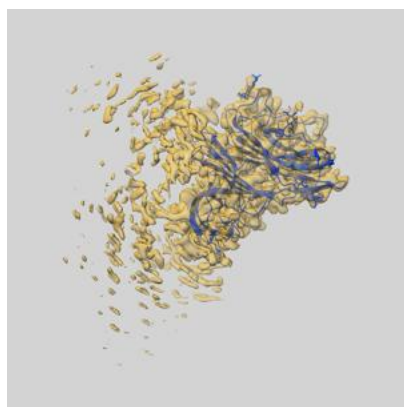
Resolution estimate (Å)	Estimation criterion (FSC cut-off)		
	0.143	0.5	Half-bit
Reported by author	1.98	-	-
Author-provided FSC curve	1.98	2.26	2.00
Unmasked-calculated*	2.69	3.05	2.74

\*Resolution estimate based on FSC curve calculated by comparison of deposited half-maps. The value from deposited half-maps intersecting FSC 0.143 CUT-OFF 2.69 differs from the reported value 1.98 by more than 10 %

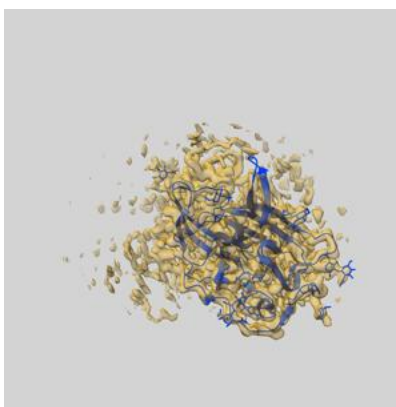
## 9 Map-model fit [i](#)

This section contains information regarding the fit between EMDB map EMD-70904 and PDB model 9OVO. Per-residue inclusion information can be found in section [3](#) on page [7](#).

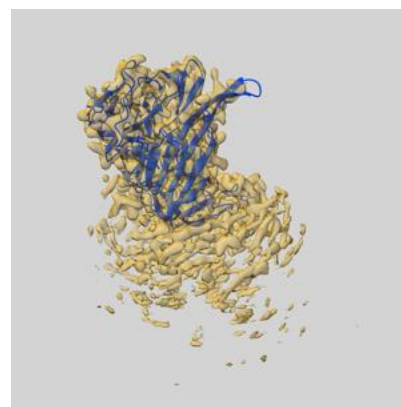
### 9.1 Map-model overlay [i](#)



X



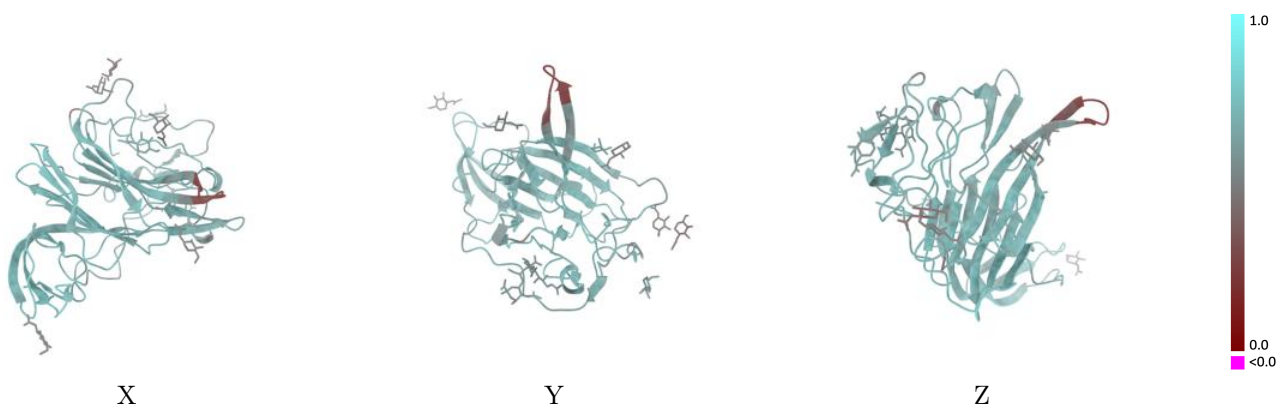
Y



Z

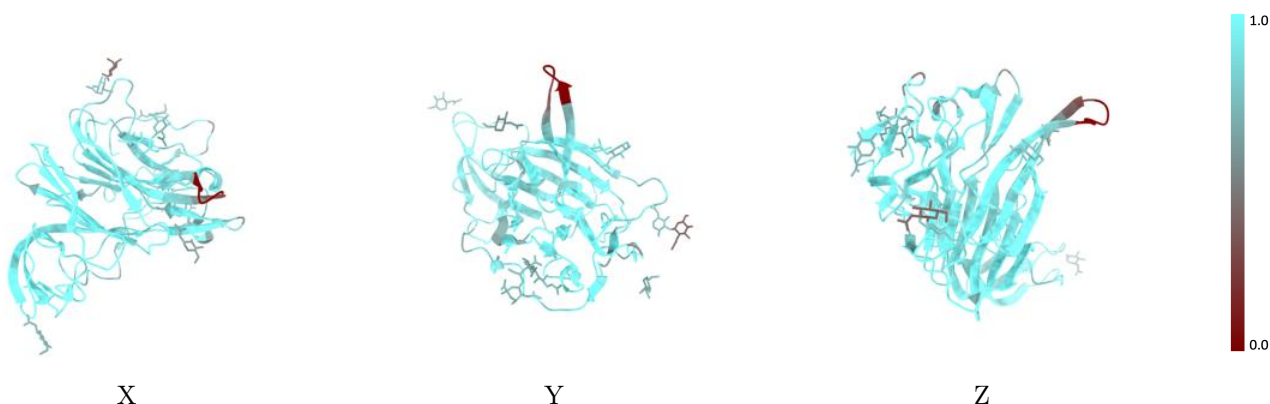
The images above show the 3D surface view of the map at the recommended contour level 0.13 at 50% transparency in yellow overlaid with a ribbon representation of the model coloured in blue. These images allow for the visual assessment of the quality of fit between the atomic model and the map.

## 9.2 Q-score mapped to coordinate model [i](#)



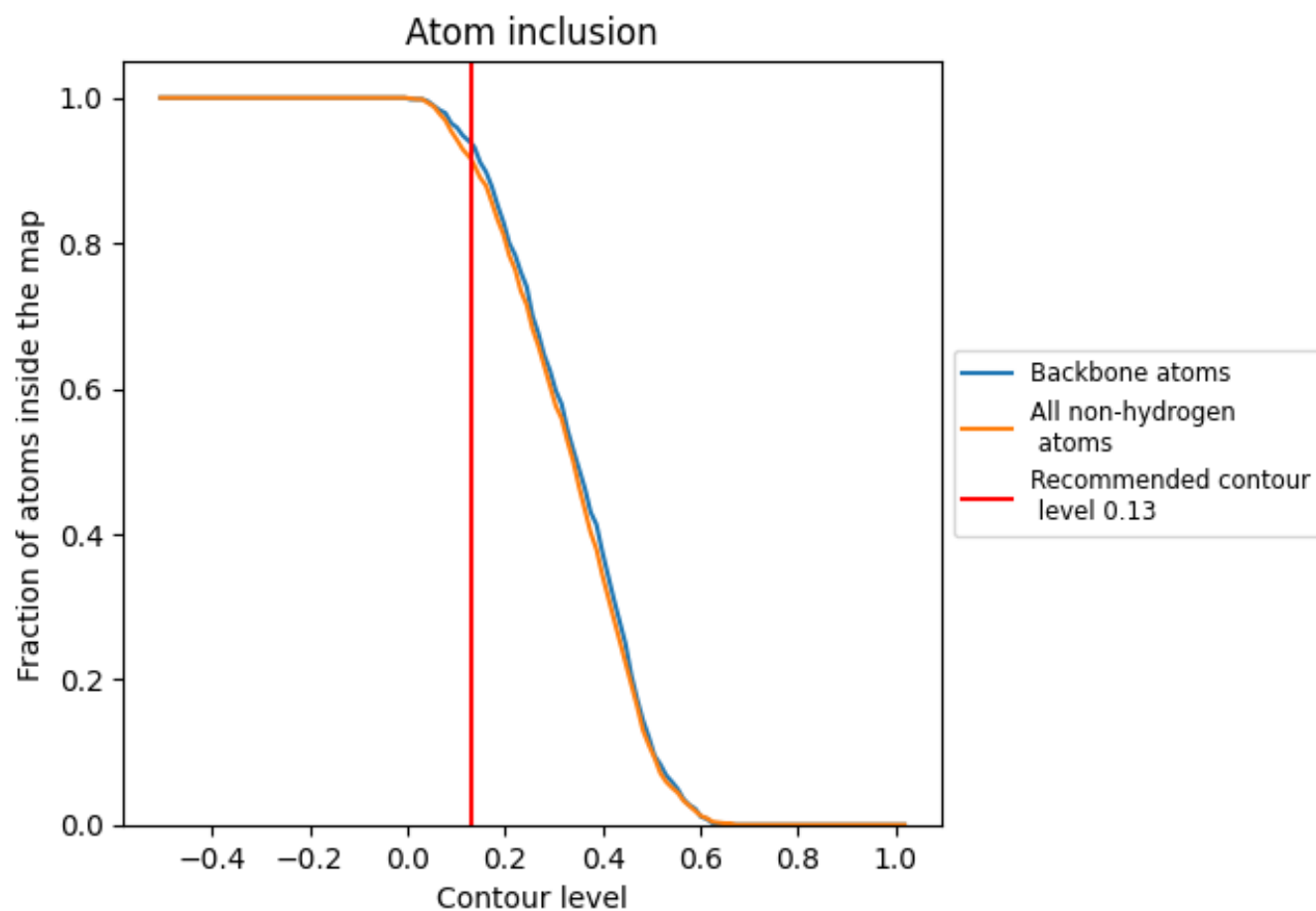
The images above show the model with each residue coloured according to its Q-score. This shows their resolvability in the map with higher Q-score values reflecting better resolvability. Please note: Q-score is calculating the resolvability of atoms, and thus high values are only expected at resolutions at which atoms can be resolved. Low Q-score values may therefore be expected for many entries.

## 9.3 Atom inclusion mapped to coordinate model [i](#)



The images above show the model with each residue coloured according to its atom inclusion. This shows to what extent they are inside the map at the recommended contour level (0.13).

## 9.4 Atom inclusion [i](#)



At the recommended contour level, 94% of all backbone atoms, 92% of all non-hydrogen atoms, are inside the map.



9.5 Map-model fit summary ⓘ

The table lists the average atom inclusion at the recommended contour level (0.13) and Q-score for the entire model and for each chain.

Chain	Atom inclusion	Q-score
All	<div></div> 0.9160	<div></div> 0.6380
A	<div></div> 0.9170	<div></div> 0.6410
B	<div></div> 0.5360	<div></div> 0.4470
C	<div></div> 0.8210	<div></div> 0.5480

