



# wwPDB X-ray Structure Validation Summary Report ⓘ

May 9, 2026 – 06:04 PM EDT

PDB ID : 10KT / pdb\_000010kt  
Title : Crystal structure of A2A adenosine receptor A2AR-bRIL in complex with Compound50  
Authors : Krishnamurthy, H.  
Deposited on : 2026-01-25  
Resolution : 2.59 Å(reported)

This is a wwPDB X-ray Structure Validation Summary Report for a publicly released PDB entry.

We welcome your comments at [validation@mail.wwpdb.org](mailto:validation@mail.wwpdb.org)

A user guide is available at

<https://www.wwpdb.org/validation/2017/XrayValidationReportHelp>

with specific help available everywhere you see the ⓘ symbol.

The types of validation reports are described at

<http://www.wwpdb.org/validation/2017/FAQs#types>.

---

The following versions of software and data (see [references ⓘ](#)) were used in the production of this report:

MolProbity : 4-5-2 with Phenix2.0  
Mogul : 2022.3.0, CSD as543be (2022)  
Xtriage (Phenix) : 2.0  
EDS : 3.0  
Buster-report : wwPDB partial adaption of 1.1.7 (2018)  
Percentile statistics : 20250101.v01 (using entries in the PDB archive January 1st 2025)  
CCP4 : 9.0.010 (Gargrove)  
Density-Fitness : 1.0.12  
Ideal geometry (proteins) : Engh & Huber (2001)  
Ideal geometry (DNA, RNA) : Parkinson et al. (1996)  
Validation Pipeline (wwPDB-VP) : 2.49

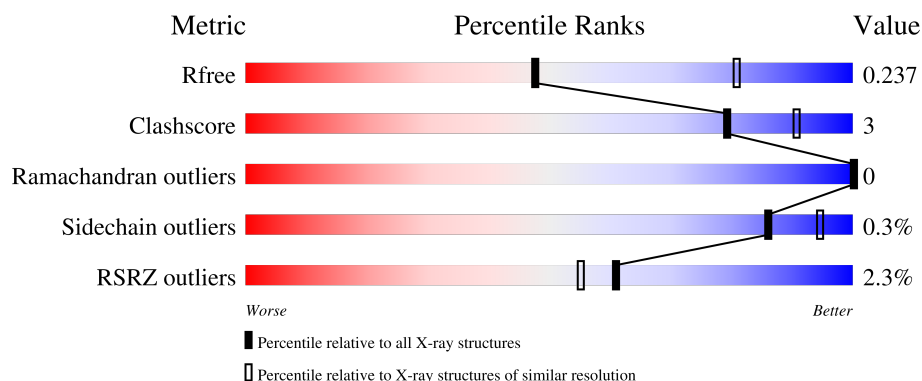
# 1 Overall quality at a glance

The following experimental techniques were used to determine the structure:

*X-RAY DIFFRACTION*

The reported resolution of this entry is 2.59 Å.

Percentile scores (ranging between 0-100) for global validation metrics of the entry are shown in the following graphic. The table shows the number of entries on which the scores are based.



Metric	Whole archive (#Entries)	Similar resolution (#Entries, resolution range(Å))
$R_{free}$	180053	4008 (2.60-2.60)
Clashscore	190562	4347 (2.60-2.60)
Ramachandran outliers	187476	4277 (2.60-2.60)
Sidechain outliers	187428	4277 (2.60-2.60)
RSRZ outliers	180081	4008 (2.60-2.60)

The table below summarises the geometric issues observed across the polymeric chains and their fit to the electron density. The red, orange, yellow and green segments of the lower bar indicate the fraction of residues that contain outliers for  $\geq 3$ , 2, 1 and 0 types of geometric quality criteria respectively. A grey segment represents the fraction of residues that are not modelled. The numeric value for each fraction is indicated below the corresponding segment, with a dot representing fractions  $\leq 5\%$ . The upper red bar (where present) indicates the fraction of residues that have poor fit to the electron density. The numeric value is given above the bar.

Mol	Chain	Length	Quality of chain
1	A	431	

## 2 Entry composition

There are 9 unique types of molecules in this entry. The entry contains 3640 atoms, of which 0 are hydrogens and 0 are deuteriums.

In the tables below, the ZeroOcc column contains the number of atoms modelled with zero occupancy, the AltConf column contains the number of residues with at least one atom in alternate conformation and the Trace column contains the number of residues modelled with at most 2 atoms.

- Molecule 1 is a protein called Adenosine receptor A2a,Soluble cytochrome b562.

Mol	Chain	Residues	Atoms					ZeroOcc	AltConf	Trace
1	A	390	Total	C	N	O	S	0	4	0
			3047	1985	515	525	22			

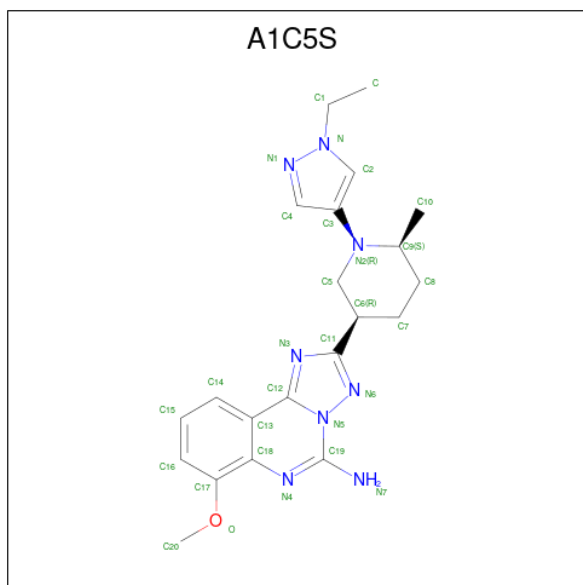
There are 23 discrepancies between the modelled and reference sequences:

Chain	Residue	Modelled	Actual	Comment	Reference
A	-8	ASP	-	expression tag	UNP P29274
A	-7	TYR	-	expression tag	UNP P29274
A	-6	LYS	-	expression tag	UNP P29274
A	-5	ASP	-	expression tag	UNP P29274
A	-4	ASP	-	expression tag	UNP P29274
A	-3	ASP	-	expression tag	UNP P29274
A	-2	ASP	-	expression tag	UNP P29274
A	-1	GLY	-	expression tag	UNP P29274
A	0	ALA	-	expression tag	UNP P29274
A	1	PRO	-	expression tag	UNP P29274
A	1007	TRP	MET	conflict	UNP P0ABE7
A	1102	ILE	HIS	conflict	UNP P0ABE7
A	1106	LEU	-	linker	UNP P0ABE7
A	317	HIS	-	expression tag	UNP P29274
A	318	HIS	-	expression tag	UNP P29274
A	319	HIS	-	expression tag	UNP P29274
A	320	HIS	-	expression tag	UNP P29274
A	321	HIS	-	expression tag	UNP P29274
A	322	HIS	-	expression tag	UNP P29274
A	323	HIS	-	expression tag	UNP P29274
A	324	HIS	-	expression tag	UNP P29274
A	325	HIS	-	expression tag	UNP P29274
A	326	HIS	-	expression tag	UNP P29274

- Molecule 2 is SODIUM ION (CCD ID: NA) (formula: Na).

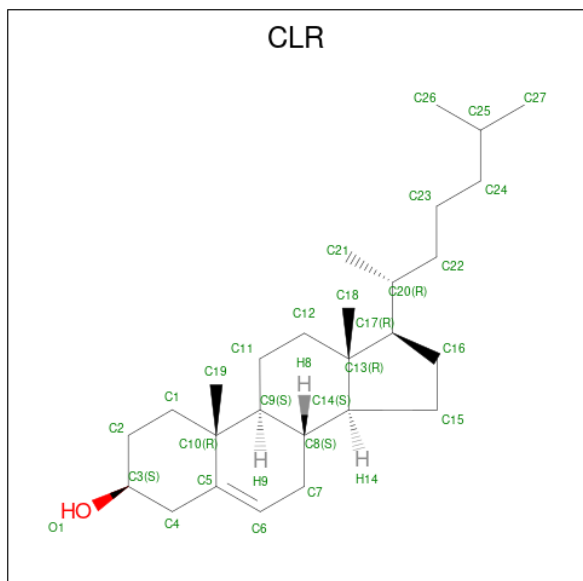
Mol	Chain	Residues	Atoms		ZeroOcc	AltConf
2	A	1	Total	Na	0	0
			1	1		

- Molecule 3 is (4%{S})-2-[(3%{R},6%{S})-1-(1-ethyl-1%{H}-pyrazol-4-yl)-6-methylpiperidin-3-yl]-7-methoxy[1,2,4]triazolo[1,5-%{c}]quinazolin-5-amine (CCD ID: A1C5S) (formula:  $C_{21}H_{26}N_8O$ ) (labeled as "Ligand of Interest" by depositor).



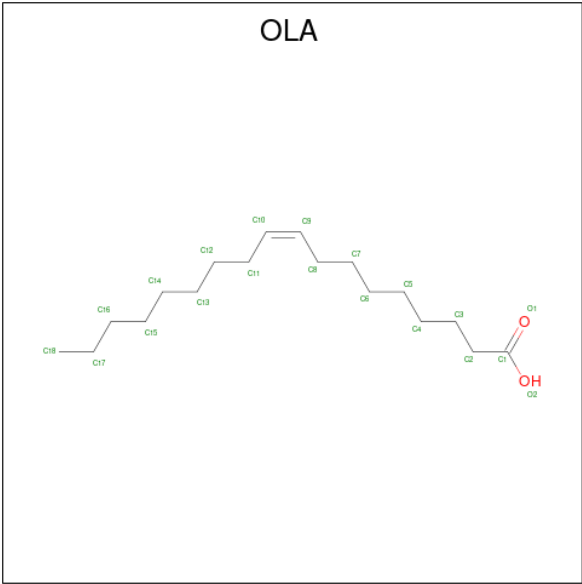
Mol	Chain	Residues	Atoms				ZeroOcc	AltConf
3	A	1	Total	C	N	O	0	0
			30	21	8	1		

- Molecule 4 is CHOLESTEROL (CCD ID: CLR) (formula:  $C_{27}H_{46}O$ ).



Mol	Chain	Residues	Atoms			ZeroOcc	AltConf
4	A	1	Total	C	O	0	0
			28	27	1		
4	A	1	Total	C	O	0	0
			28	27	1		
4	A	1	Total	C	O	0	0
			28	27	1		

- Molecule 5 is OLEIC ACID (CCD ID: OLA) (formula: C<sub>18</sub>H<sub>34</sub>O<sub>2</sub>).



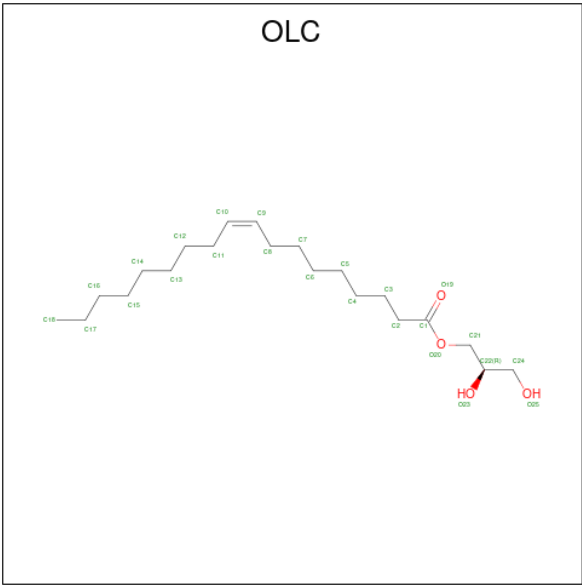
Mol	Chain	Residues	Atoms			ZeroOcc	AltConf
5	A	1	Total	C	O	0	0
			15	13	2		
5	A	1	Total	C	O	0	0
			19	17	2		
5	A	1	Total	C	O	0	0
			11	9	2		
5	A	1	Total	C	O	0	0
			9	7	2		
5	A	1	Total	C	O	0	0
			8	6	2		
5	A	1	Total	C	O	0	0
			10	8	2		
5	A	1	Total	C	O	0	0
			9	7	2		
5	A	1	Total	C	O	0	0
			12	10	2		
5	A	1	Total	C		0	0
			10	10			

Continued on next page...

Continued from previous page...

Mol	Chain	Residues	Atoms			ZeroOcc	AltConf
5	A	1	Total	C	O	0	0
			15	13	2		
5	A	1	Total	C	O	0	0
			15	13	2		
5	A	1	Total	C	O	0	0
			19	17	2		
5	A	1	Total	C	O	0	0
			11	9	2		
5	A	1	Total	C	O	0	0
			18	16	2		
5	A	1	Total	C	O	0	0
			20	18	2		
5	A	1	Total	C	O	0	0
			20	18	2		
5	A	1	Total	C	O	0	0
			20	18	2		

- Molecule 6 is (2R)-2,3-dihydroxypropyl (9Z)-octadec-9-enoate (CCD ID: OLC) (formula: C<sub>21</sub>H<sub>40</sub>O<sub>4</sub>).



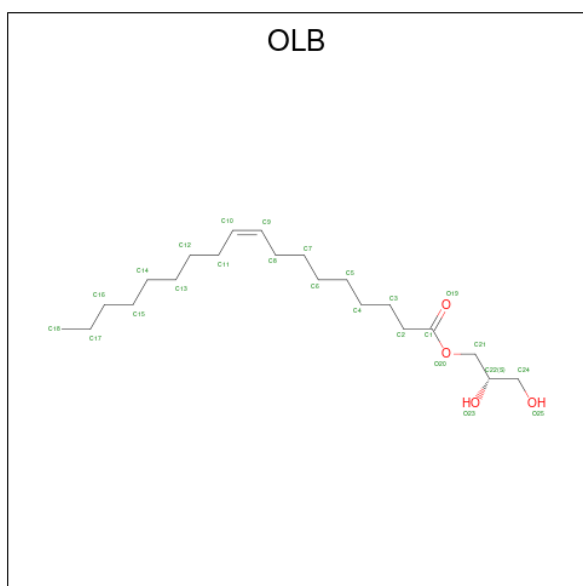
Mol	Chain	Residues	Atoms			ZeroOcc	AltConf
6	A	1	Total	C	O	0	0
			17	13	4		
6	A	1	Total	C	O	0	0
			15	11	4		
6	A	1	Total	C	O	0	0
			22	18	4		

Continued on next page...

Continued from previous page...

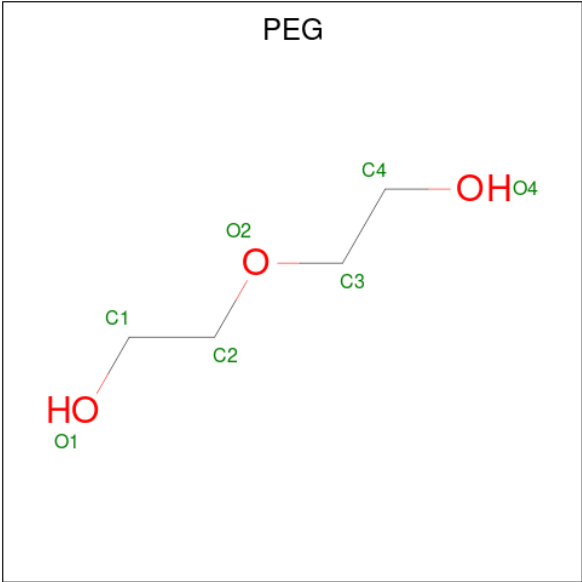
Mol	Chain	Residues	Atoms			ZeroOcc	AltConf
6	A	1	Total	C	O	0	0
			16	12	4		
6	A	1	Total	C	O	0	0
			21	17	4		
6	A	1	Total	C	O	0	0
			17	13	4		

- Molecule 7 is (2S)-2,3-dihydroxypropyl (9Z)-octadec-9-enoate (CCD ID: OLB) (formula:  $C_{21}H_{40}O_4$ ).



Mol	Chain	Residues	Atoms			ZeroOcc	AltConf
7	A	1	Total	C	O	0	0
			18	14	4		

- Molecule 8 is DI(HYDROXYETHYL)ETHER (CCD ID: PEG) (formula:  $C_4H_{10}O_3$ ).



Mol	Chain	Residues	Atoms			ZeroOcc	AltConf
8	A	1	Total	C	O	0	0
			7	4	3		
8	A	1	Total	C	O	0	0
			7	4	3		

- Molecule 9 is water.


Mol	Chain	Residues	Atoms		ZeroOcc	AltConf
9	A	97	Total	O	0	0
			97	97		

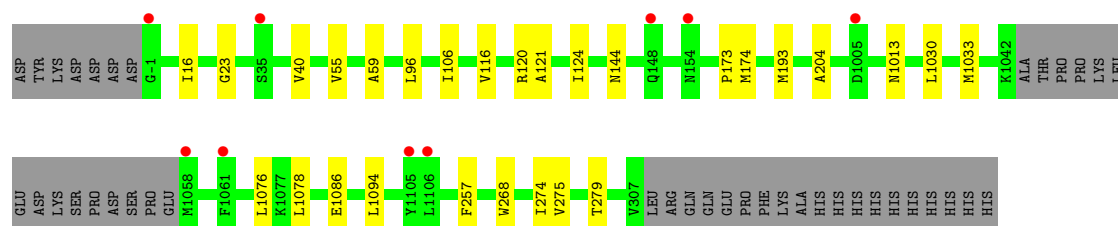


### 3 Residue-property plots

These plots are drawn for all protein, RNA, DNA and oligosaccharide chains in the entry. The first graphic for a chain summarises the proportions of the various outlier classes displayed in the second graphic. The second graphic shows the sequence view annotated by issues in geometry and electron density. Residues are color-coded according to the number of geometric quality criteria for which they contain at least one outlier: green = 0, yellow = 1, orange = 2 and red = 3 or more. A red dot above a residue indicates a poor fit to the electron density ( $RSRZ > 2$ ). Stretches of 2 or more consecutive residues without any outlier are shown as a green connector. Residues present in the sample, but not in the model, are shown in grey.

- Molecule 1: Adenosine receptor A2a,Soluble cytochrome b562

Chain A: 



## 4 Data and refinement statistics

Property	Value	Source
Space group	C 2 2 21	Depositor
Cell constants a, b, c, $\alpha$ , $\beta$ , $\gamma$	39.37Å 179.38Å 140.55Å 90.00° 90.00° 90.00°	Depositor
Resolution (Å)	41.53 – 2.59 41.53 – 2.59	Depositor EDS
% Data completeness (in resolution range)	98.6 (41.53-2.59) 99.2 (41.53-2.59)	Depositor EDS
$R_{merge}$	(Not available)	Depositor
$R_{sym}$	(Not available)	Depositor
$\langle I/\sigma(I) \rangle$ <sup>1</sup>	1.01 (at 2.58Å)	Xtriage
Refinement program	PHENIX 2.0_5885	Depositor
R, $R_{free}$	0.207 , 0.243 0.201 , 0.237	Depositor DCC
$R_{free}$ test set	769 reflections (4.77%)	wwPDB-VP
Wilson B-factor (Å <sup>2</sup> )	53.7	Xtriage
Anisotropy	0.035	Xtriage
Bulk solvent $k_{sol}$ (e/Å <sup>3</sup> ), $B_{sol}$ (Å <sup>2</sup> )	0.34 , 68.3	EDS
L-test for twinning <sup>2</sup>	$\langle  L  \rangle = 0.49$ , $\langle L^2 \rangle = 0.33$	Xtriage
Estimated twinning fraction	No twinning to report.	Xtriage
$F_o, F_c$ correlation	0.95	EDS
Total number of atoms	3640	wwPDB-VP
Average B, all atoms (Å <sup>2</sup> )	66.0	wwPDB-VP

Xtriage's analysis on translational NCS is as follows: *The largest off-origin peak in the Patterson function is 7.58% of the height of the origin peak. No significant pseudotranslation is detected.*

<sup>1</sup>Intensities estimated from amplitudes.

<sup>2</sup>Theoretical values of  $\langle |L| \rangle$ ,  $\langle L^2 \rangle$  for acentric reflections are 0.5, 0.333 respectively for untwinned datasets, and 0.375, 0.2 for perfectly twinned datasets.

## 5 Model quality [i](#)

### 5.1 Standard geometry [i](#)

Bond lengths and bond angles in the following residue types are not validated in this section: OLC, A1C5S, NA, OLA, PEG, CLR, OLB

The Z score for a bond length (or angle) is the number of standard deviations the observed value is removed from the expected value. A bond length (or angle) with  $|Z| > 5$  is considered an outlier worth inspection. RMSZ is the root-mean-square of all Z scores of the bond lengths (or angles).

Mol	Chain	Bond lengths		Bond angles	
		RMSZ	$\# Z  > 5$	RMSZ	$\# Z  > 5$
1	A	0.18	0/3112	0.33	0/4233

There are no bond length outliers.

There are no bond angle outliers.

There are no chirality outliers.

There are no planarity outliers.

### 5.2 Too-close contacts [i](#)

In the following table, the Non-H and H(model) columns list the number of non-hydrogen atoms and hydrogen atoms in the chain respectively. The H(added) column lists the number of hydrogen atoms added and optimized by MolProbity. The Clashes column lists the number of clashes within the asymmetric unit, whereas Symm-Clashes lists symmetry-related clashes.

Mol	Chain	Non-H	H(model)	H(added)	Clashes	Symm-Clashes
1	A	3047	0	3101	17	0
2	A	1	0	0	0	0
3	A	30	0	0	0	0
4	A	84	0	138	0	0
5	A	241	0	342	6	0
6	A	108	0	144	1	0
7	A	18	0	23	0	0
8	A	14	0	20	1	0
9	A	97	0	0	1	0
All	All	3640	0	3768	20	0

The all-atom clashscore is defined as the number of clashes found per 1000 atoms (including hydrogen atoms). The all-atom clashscore for this structure is 3.

The worst 5 of 20 close contacts within the same asymmetric unit are listed below, sorted by their clash magnitude.

Atom-1	Atom-2	Interatomic distance (Å)	Clash overlap (Å)
1:A:124:ILE:HD13	5:A:1209:OLA:H31	1.73	0.69
1:A:40:VAL:HG11	1:A:116:VAL:HG12	1.76	0.67
1:A:106:ILE:HD11	1:A:204:ALA:HB2	1.83	0.60
1:A:1033:MET:HE1	1:A:1094:LEU:HD13	1.83	0.60
5:A:1207:OLA:H142	6:A:1220:OLC:H13A	1.91	0.52

There are no symmetry-related clashes.

## 5.3 Torsion angles [i](#)

### 5.3.1 Protein backbone [i](#)

In the following table, the Percentiles column shows the percent Ramachandran outliers of the chain as a percentile score with respect to all X-ray entries followed by that with respect to entries of similar resolution.

The Analysed column shows the number of residues for which the backbone conformation was analysed, and the total number of residues.

Mol	Chain	Analysed	Favoured	Allowed	Outliers	Percentiles	
1	A	390/431 (90%)	382 (98%)	8 (2%)	0	100	100

There are no Ramachandran outliers to report.

### 5.3.2 Protein sidechains [i](#)

In the following table, the Percentiles column shows the percent sidechain outliers of the chain as a percentile score with respect to all X-ray entries followed by that with respect to entries of similar resolution.

The Analysed column shows the number of residues for which the sidechain conformation was analysed, and the total number of residues.

Mol	Chain	Analysed	Rotameric	Outliers	Percentiles	
1	A	319/360 (89%)	318 (100%)	1 (0%)	86	94

All (1) residues with a non-rotameric sidechain are listed below:

Mol	Chain	Res	Type
1	A	274	ILE

Sometimes sidechains can be flipped to improve hydrogen bonding and reduce clashes. All (4) such sidechains are listed below:

Mol	Chain	Res	Type
1	A	24	ASN
1	A	39	ASN
1	A	155	HIS
1	A	280	ASN

### 5.3.3 RNA ⓘ

There are no RNA molecules in this entry.

## 5.4 Non-standard residues in protein, DNA, RNA chains ⓘ

There are no non-standard protein/DNA/RNA residues in this entry.

## 5.5 Carbohydrates ⓘ

There are no oligosaccharides in this entry.

## 5.6 Ligand geometry ⓘ

Of 31 ligands modelled in this entry, 1 is monoatomic - leaving 30 for Mogul analysis.

In the following table, the Counts columns list the number of bonds (or angles) for which Mogul statistics could be retrieved, the number of bonds (or angles) that are observed in the model and the number of bonds (or angles) that are defined in the Chemical Component Dictionary. The Link column lists molecule types, if any, to which the group is linked. The Z score for a bond length (or angle) is the number of standard deviations the observed value is removed from the expected value. A bond length (or angle) with  $|Z| > 2$  is considered an outlier worth inspection. RMSZ is the root-mean-square of all Z scores of the bond lengths (or angles).

Mol	Type	Chain	Res	Link	Bond lengths			Bond angles		
					Counts	RMSZ	$\# Z  > 2$	Counts	RMSZ	$\# Z  > 2$
5	OLA	A	1228	-	19,19,19	0.72	1 (5%)	19,19,19	0.53	0
6	OLC	A	1223	-	20,20,24	0.36	0	21,21,25	0.45	0
8	PEG	A	1225	-	6,6,6	0.27	0	5,5,5	0.26	0
5	OLA	A	1230	-	19,19,19	0.68	1 (5%)	19,19,19	0.55	0

Mol	Type	Chain	Res	Link	Bond lengths			Bond angles		
					Counts	RMSZ	# Z  > 2	Counts	RMSZ	# Z  > 2
5	OLA	A	1210	-	7,7,19	1.05	1 (14%)	7,7,19	0.87	0
5	OLA	A	1208	-	10,10,19	0.84	0	10,10,19	0.79	0
6	OLC	A	1220	-	21,21,24	0.34	0	22,22,25	0.45	0
4	CLR	A	1204	-	31,31,31	0.37	0	48,48,48	0.59	0
5	OLA	A	1216	-	14,14,19	0.73	0	14,14,19	0.62	0
5	OLA	A	1209	-	8,8,19	0.98	0	8,8,19	0.82	0
5	OLA	A	1212	-	8,8,19	0.97	0	8,8,19	0.79	0
5	OLA	A	1213	-	11,11,19	0.82	0	11,11,19	0.70	0
8	PEG	A	1224	-	6,6,6	0.27	0	5,5,5	0.29	0
5	OLA	A	1227	-	17,17,19	0.70	0	17,17,19	0.64	0
5	OLA	A	1207	-	18,18,19	0.64	0	18,18,19	0.61	0
5	OLA	A	1226	-	10,10,19	0.85	0	10,10,19	0.69	0
6	OLC	A	1219	-	14,14,24	0.40	0	15,15,25	0.50	0
5	OLA	A	1214	-	9,9,19	0.40	0	8,8,19	0.27	0
7	OLB	A	1221	-	17,17,24	0.37	0	18,18,25	0.49	0
5	OLA	A	1231	-	19,19,19	0.64	0	19,19,19	0.50	0
4	CLR	A	1203	-	31,31,31	0.40	0	48,48,48	0.83	1 (2%)
5	OLA	A	1217	-	18,18,19	0.66	0	18,18,19	0.65	0
6	OLC	A	1218	-	16,16,24	0.42	0	17,17,25	0.35	0
6	OLC	A	1222	-	15,15,24	0.39	0	16,16,25	0.51	0
5	OLA	A	1206	-	14,14,19	0.77	1 (7%)	14,14,19	0.62	0
4	CLR	A	1205	-	31,31,31	0.43	0	48,48,48	0.78	1 (2%)
5	OLA	A	1211	-	9,9,19	0.89	0	9,9,19	0.73	0
3	A1C5S	A	1202	-	33,34,34	0.37	0	37,50,50	0.81	2 (5%)
5	OLA	A	1215	-	14,14,19	0.78	1 (7%)	14,14,19	0.57	0
6	OLC	A	1229	-	16,16,24	0.43	0	17,17,25	0.49	0

In the following table, the Chirals column lists the number of chiral outliers, the number of chiral centers analysed, the number of these observed in the model and the number defined in the Chemical Component Dictionary. Similar counts are reported in the Torsion and Rings columns. '-' means no outliers of that kind were identified.

Mol	Type	Chain	Res	Link	Chirals	Torsions	Rings
5	OLA	A	1228	-	-	2/17/17/17	-
6	OLC	A	1223	-	-	9/20/20/24	-
8	PEG	A	1225	-	-	2/4/4/4	-
5	OLA	A	1230	-	-	7/17/17/17	-
5	OLA	A	1210	-	-	0/5/5/17	-
5	OLA	A	1208	-	-	5/8/8/17	-
6	OLC	A	1220	-	-	7/21/21/24	-

Continued on next page...

*Continued from previous page...*

Mol	Type	Chain	Res	Link	Chirals	Torsions	Rings
4	CLR	A	1204	-	-	0/10/68/68	0/4/4/4
5	OLA	A	1216	-	-	0/12/12/17	-
5	OLA	A	1209	-	-	0/6/6/17	-
5	OLA	A	1212	-	-	1/6/6/17	-
5	OLA	A	1213	-	-	2/9/9/17	-
8	PEG	A	1224	-	-	0/4/4/4	-
5	OLA	A	1227	-	-	7/15/15/17	-
5	OLA	A	1207	-	-	1/16/16/17	-
5	OLA	A	1226	-	-	3/8/8/17	-
6	OLC	A	1219	-	-	1/14/14/24	-
5	OLA	A	1214	-	-	1/7/7/17	-
7	OLB	A	1221	-	-	3/17/17/24	-
5	OLA	A	1231	-	-	1/17/17/17	-
4	CLR	A	1203	-	-	3/10/68/68	0/4/4/4
5	OLA	A	1217	-	-	6/16/16/17	-
6	OLC	A	1218	-	-	2/16/16/24	-
6	OLC	A	1222	-	-	0/15/15/24	-
5	OLA	A	1206	-	-	5/12/12/17	-
4	CLR	A	1205	-	-	2/10/68/68	0/4/4/4
5	OLA	A	1211	-	-	3/7/7/17	-
3	A1C5S	A	1202	-	-	4/8/25/25	0/5/5/5
5	OLA	A	1215	-	-	3/12/12/17	-
6	OLC	A	1229	-	-	4/16/16/24	-

All (5) bond length outliers are listed below:

Mol	Chain	Res	Type	Atoms	Z	Observed(Å)	Ideal(Å)
5	A	1228	OLA	C2-C1	2.15	1.55	1.50
5	A	1206	OLA	C2-C1	2.10	1.55	1.50
5	A	1215	OLA	C2-C1	2.06	1.55	1.50
5	A	1210	OLA	C2-C1	2.03	1.55	1.50
5	A	1230	OLA	C2-C1	2.02	1.55	1.50

All (4) bond angle outliers are listed below:

Mol	Chain	Res	Type	Atoms	Z	Observed(°)	Ideal(°)
3	A	1202	A1C5S	C1-N-C2	-2.46	125.99	128.27
4	A	1205	CLR	O1-C3-C4	2.27	114.83	109.71
4	A	1203	CLR	C21-C20-C17	2.08	116.01	112.88

*Continued on next page...*

*Continued from previous page...*

Mol	Chain	Res	Type	Atoms	Z	Observed(°)	Ideal(°)
3	A	1202	A1C5S	C1-N-N1	2.02	121.64	119.74

There are no chirality outliers.

5 of 84 torsion outliers are listed below:

Mol	Chain	Res	Type	Atoms
6	A	1220	OLC	C21-C22-C24-O25
6	A	1220	OLC	O20-C21-C22-C24
6	A	1223	OLC	C21-C22-C24-O25
7	A	1221	OLB	C2-C1-O20-C21
7	A	1221	OLB	O19-C1-O20-C21

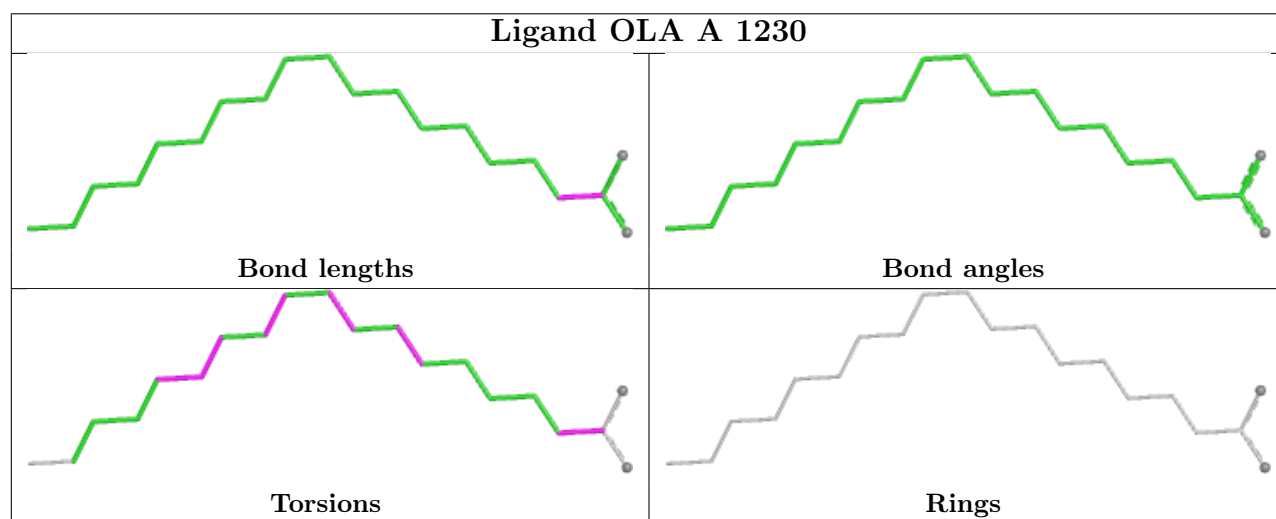
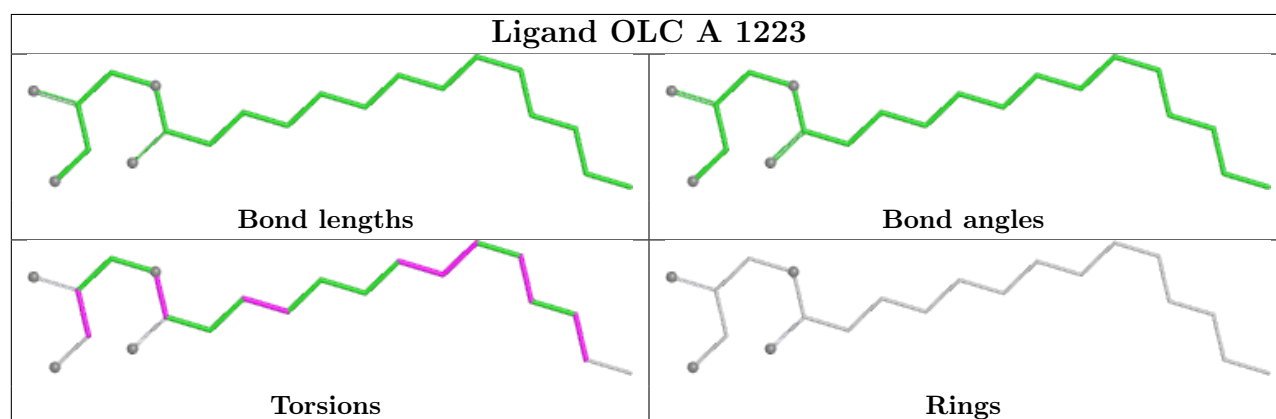
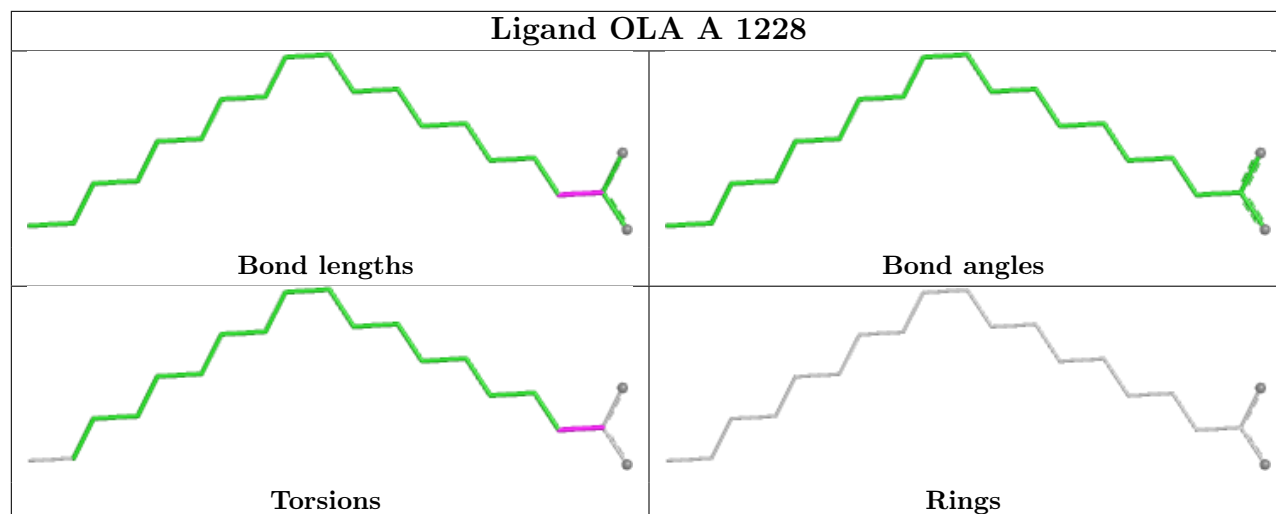
There are no ring outliers.

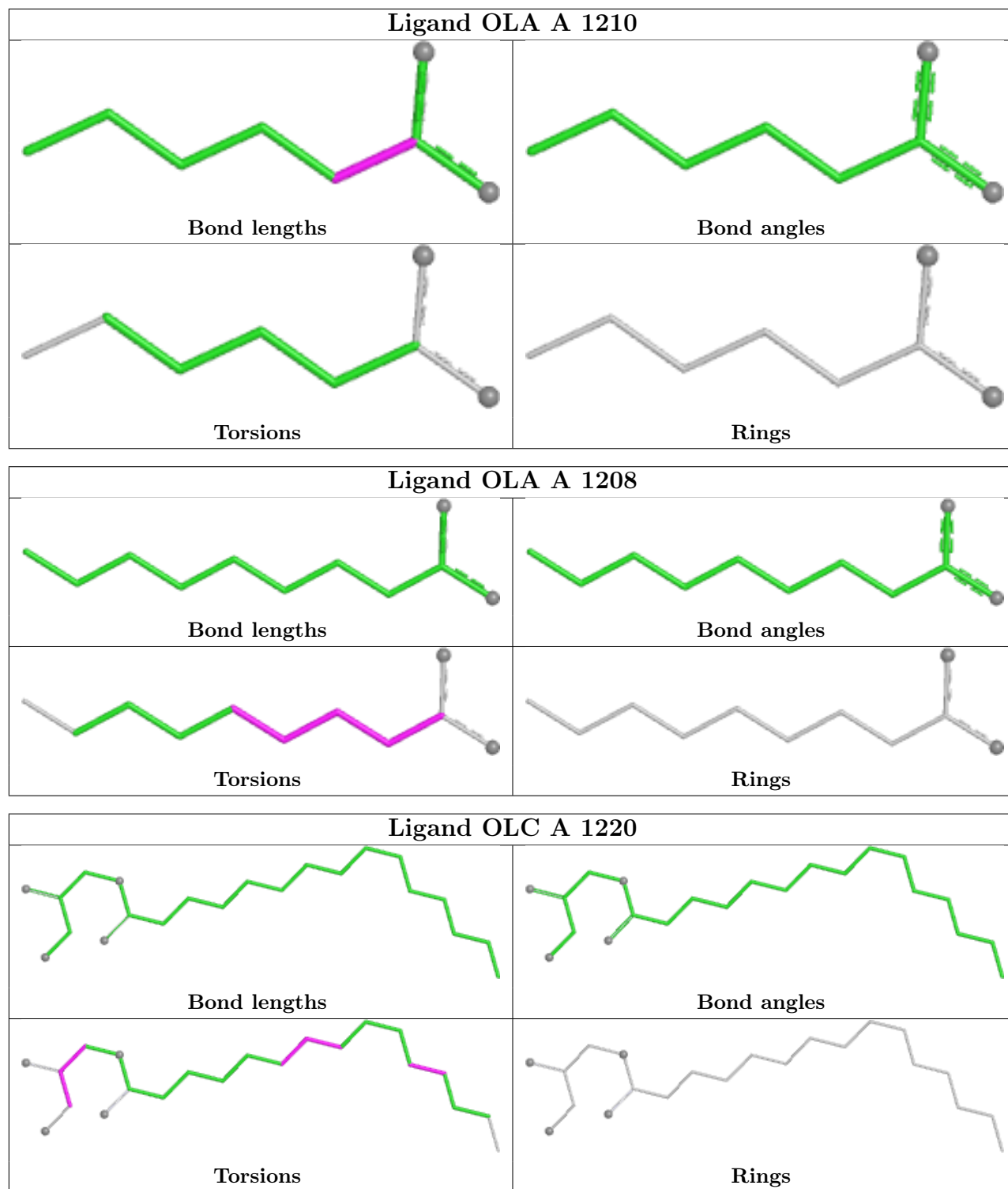
7 monomers are involved in 7 short contacts:

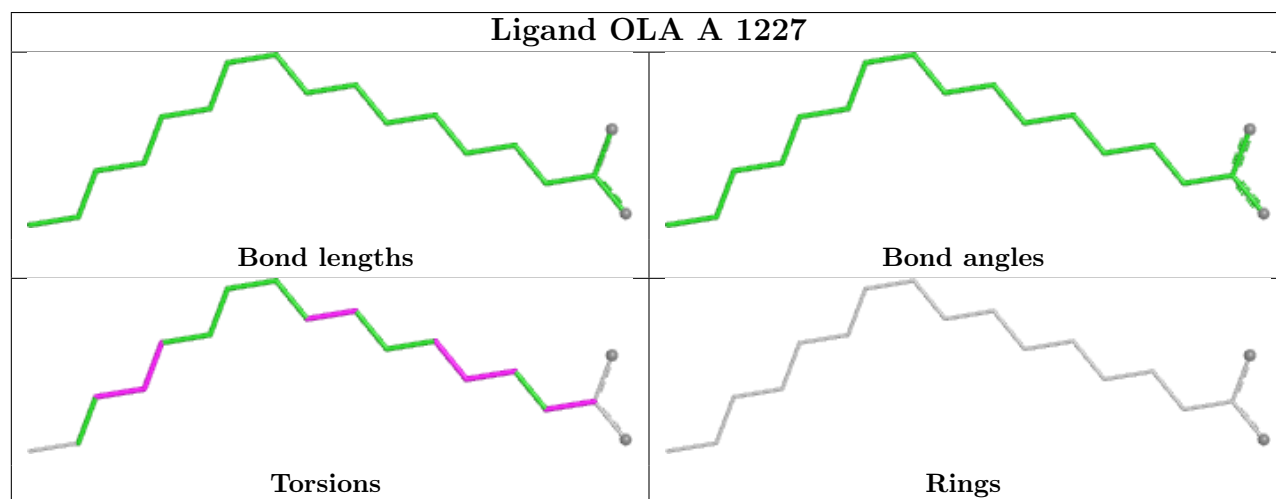
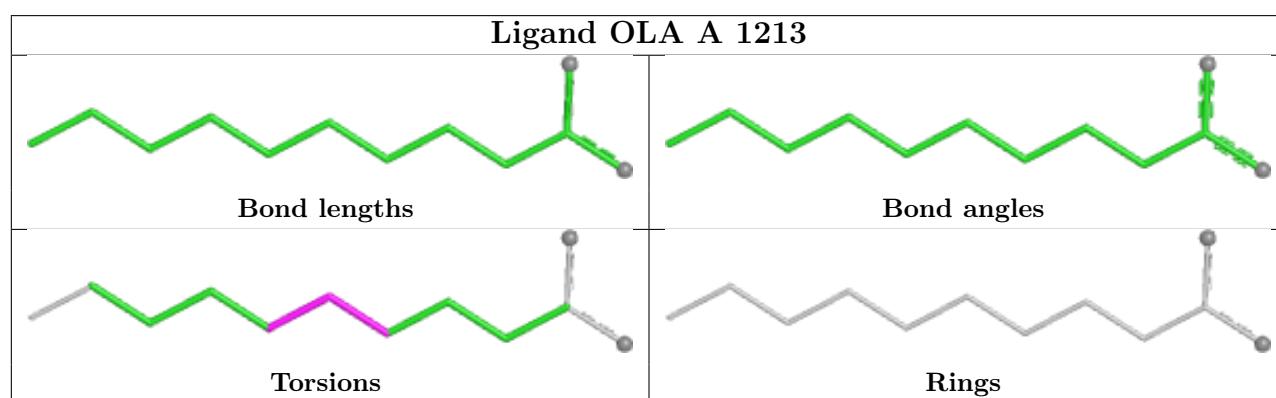
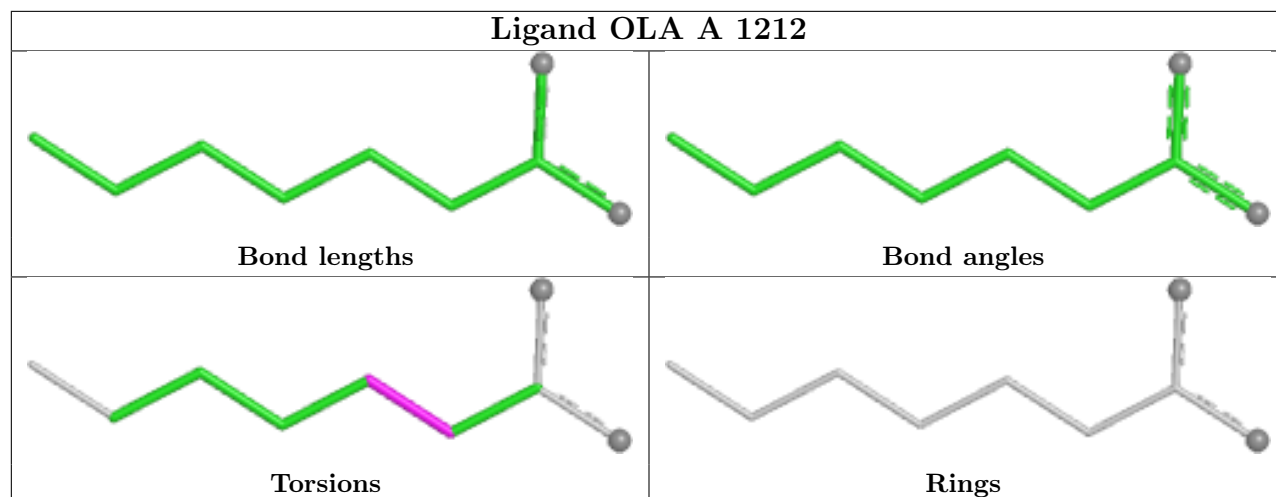
Mol	Chain	Res	Type	Clashes	Symm-Clashes
5	A	1230	OLA	1	0
6	A	1220	OLC	1	0
5	A	1209	OLA	1	0
5	A	1212	OLA	1	0
8	A	1224	PEG	1	0
5	A	1227	OLA	2	0
5	A	1207	OLA	1	0

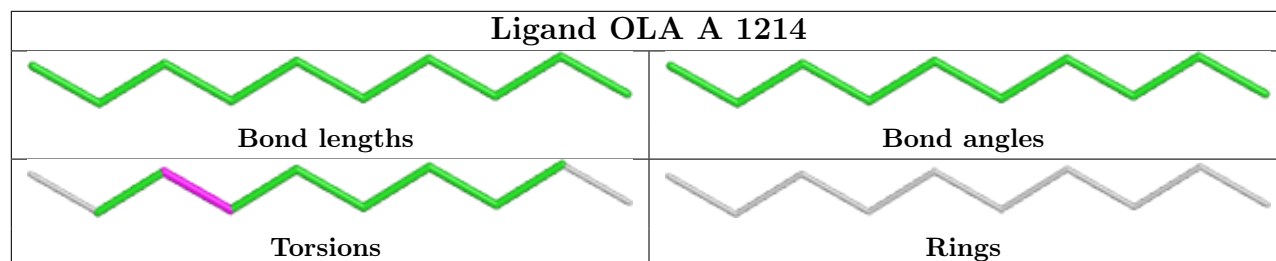
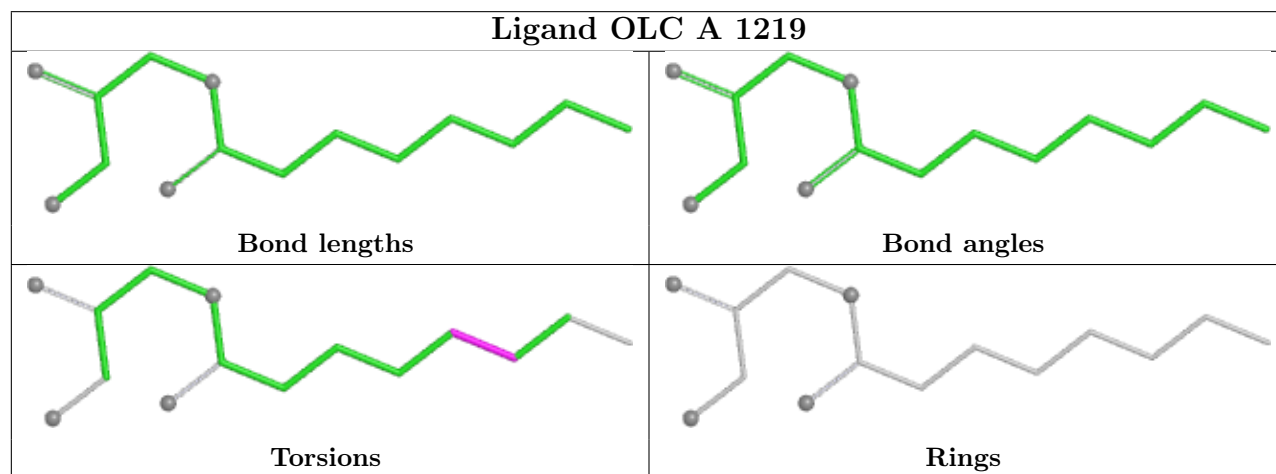
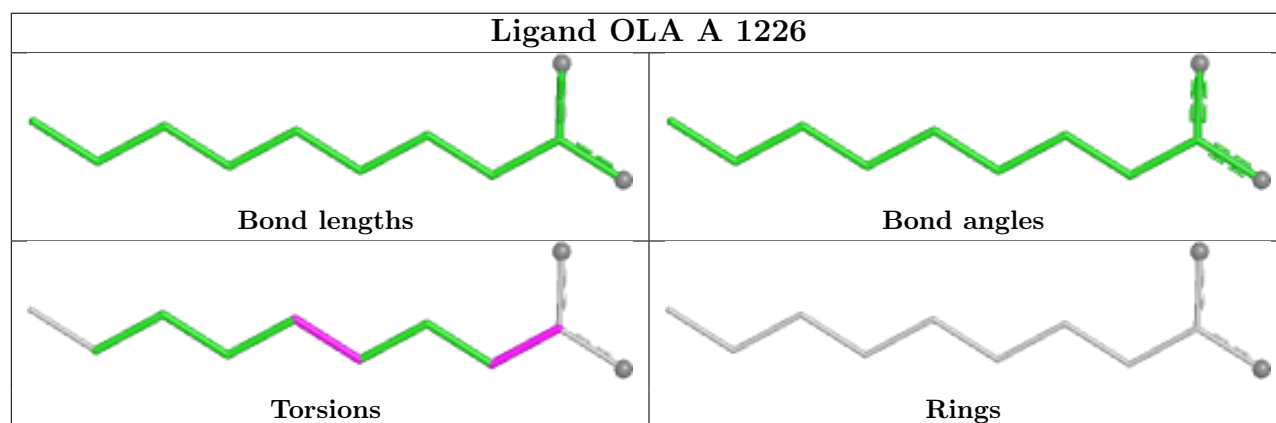
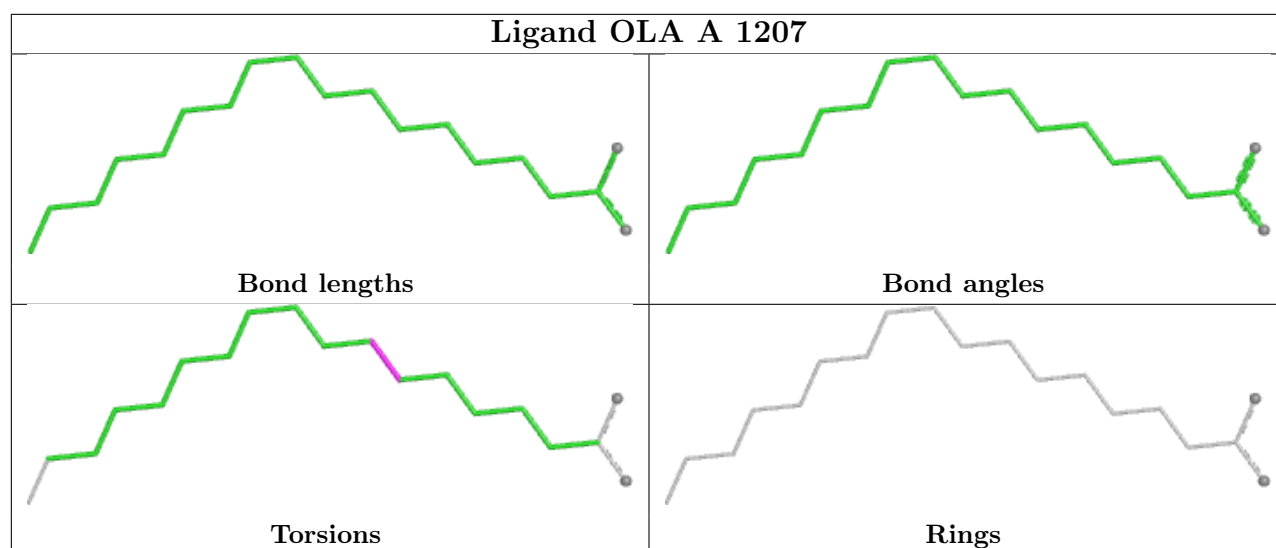
The following is a two-dimensional graphical depiction of Mogul quality analysis of bond lengths, bond angles, torsion angles, and ring geometry for all instances of the Ligand of Interest. In addition, ligands with molecular weight > 250 and outliers as shown on the validation Tables will also be included. For torsion angles, if less than 5% of the Mogul distribution of torsion angles is within 10 degrees of the torsion angle in question, then that torsion angle is considered an outlier. Any bond that is central to one or more torsion angles identified as an outlier by Mogul will be highlighted in the graph. For rings, the root-mean-square deviation (RMSD) between the ring in question and similar rings identified by Mogul is calculated over all ring torsion angles. If the average RMSD is greater than 60 degrees and the minimal RMSD between the ring in question and any Mogul-identified rings is also greater than 60 degrees, then that ring is considered an outlier. The outliers are highlighted in purple. The color gray indicates Mogul did not find sufficient equivalents in the CSD to analyse the geometry.

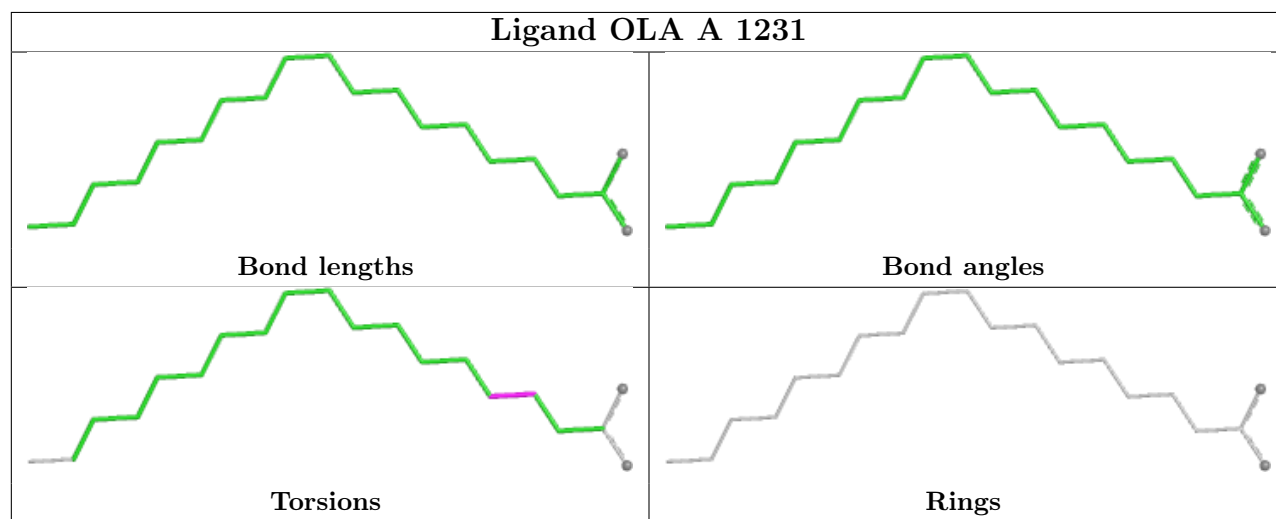
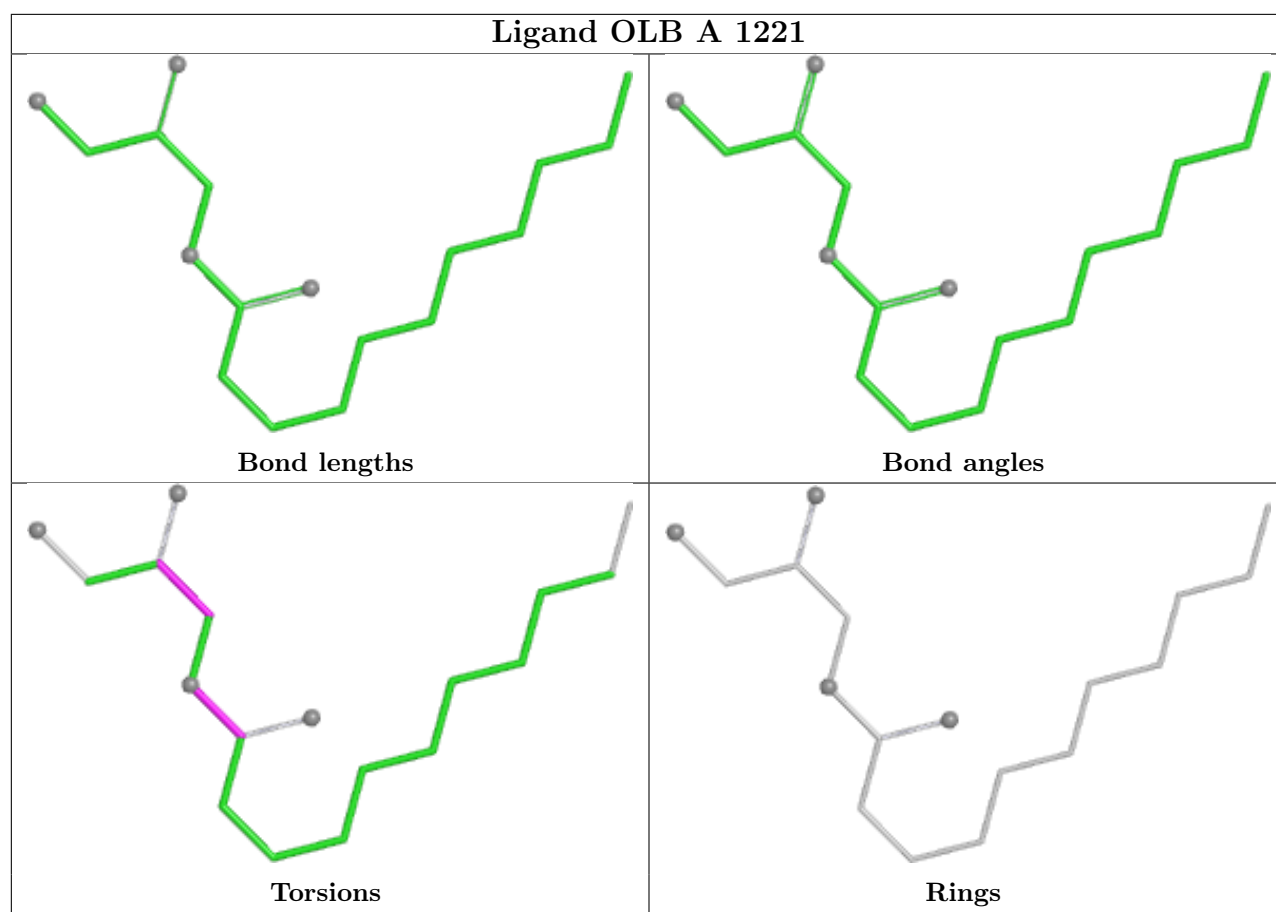


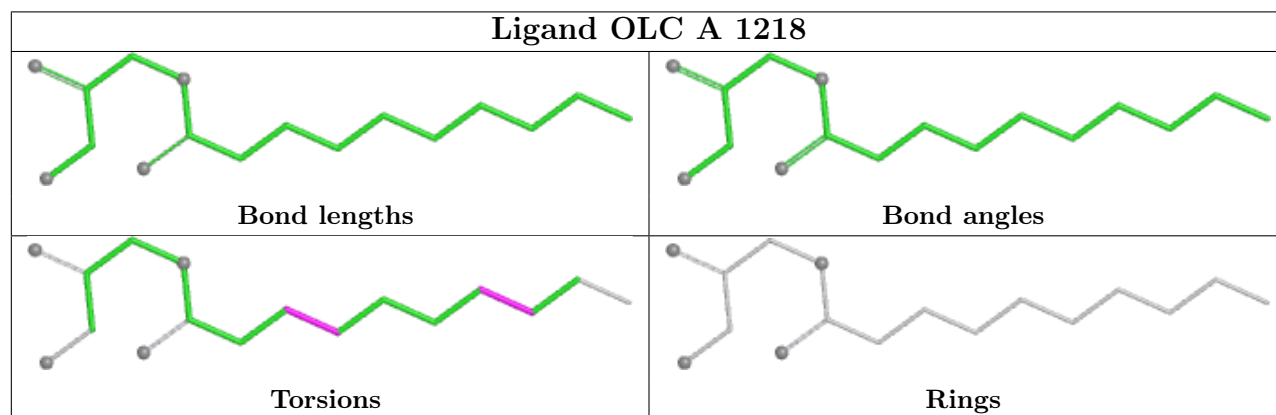
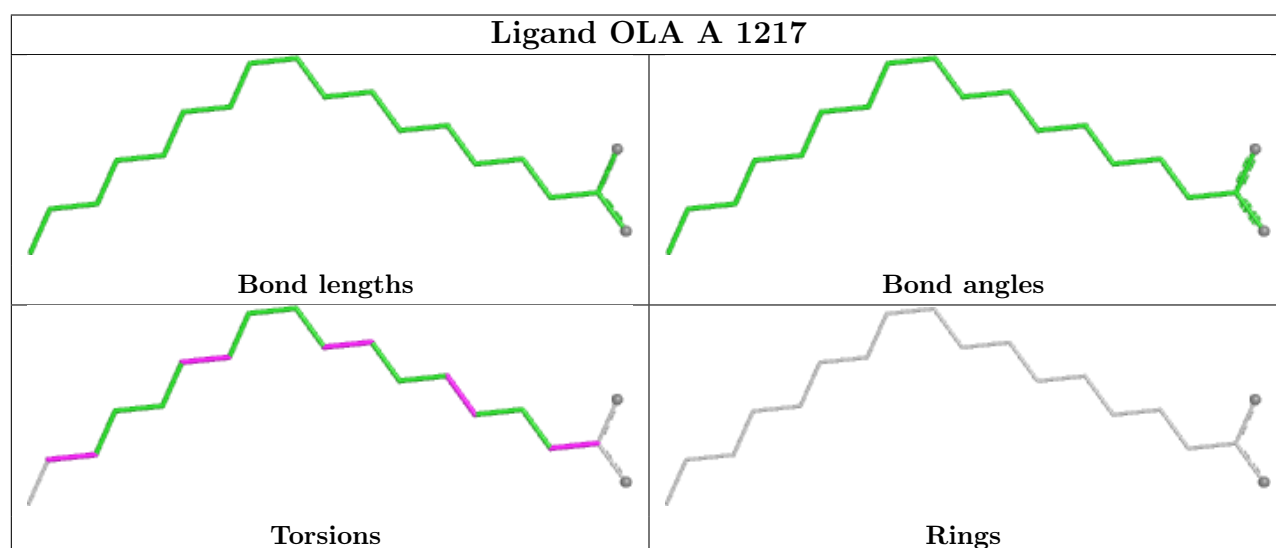
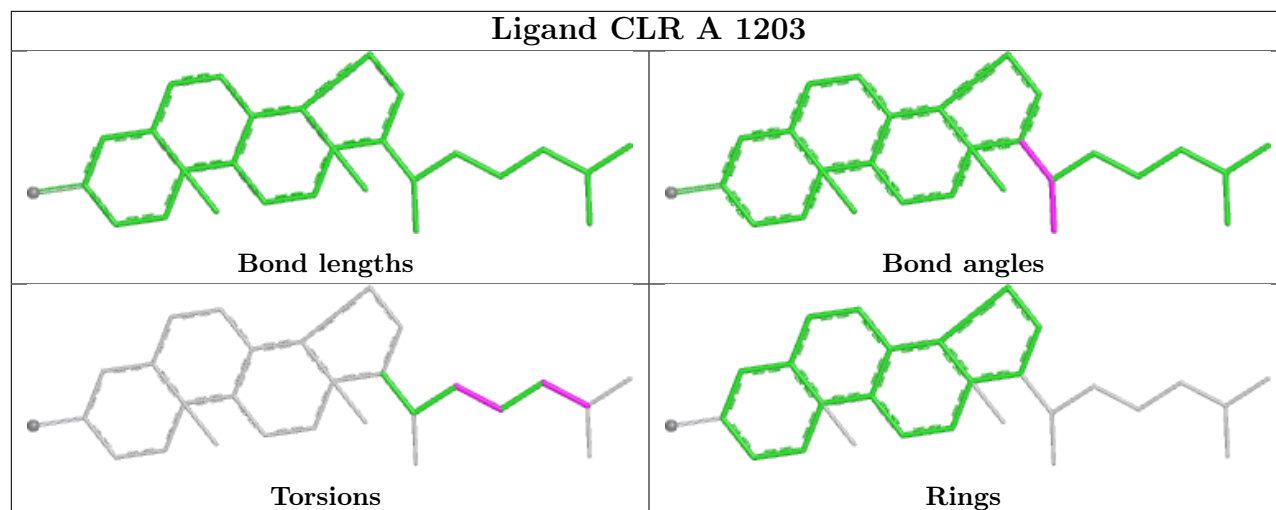


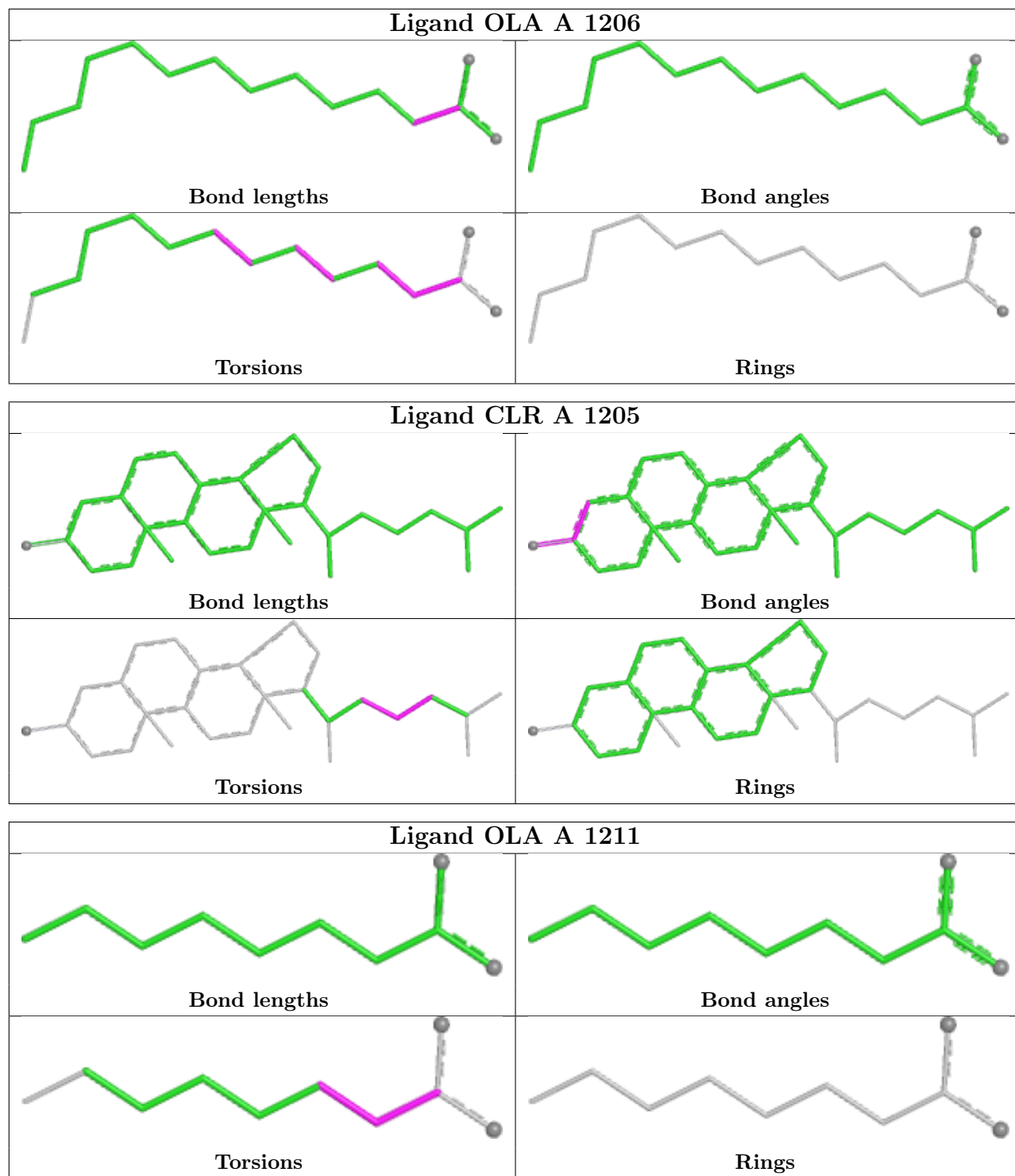




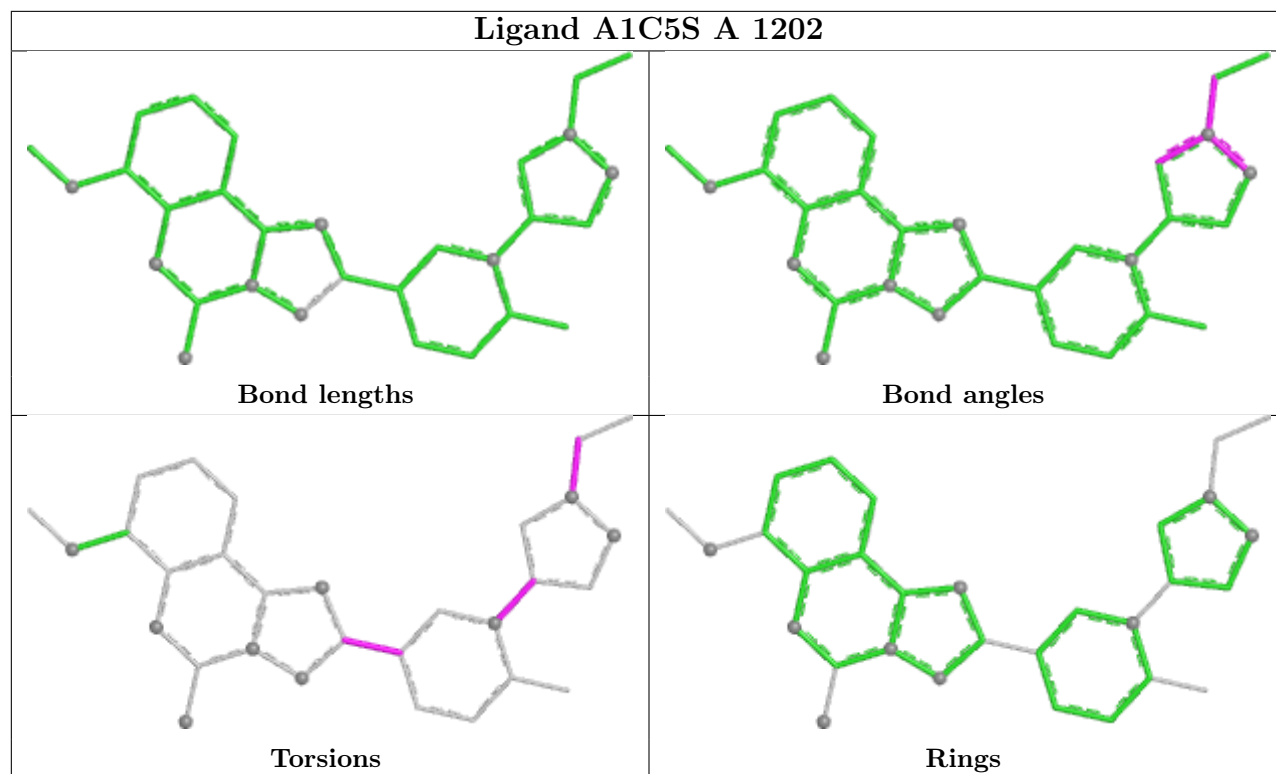




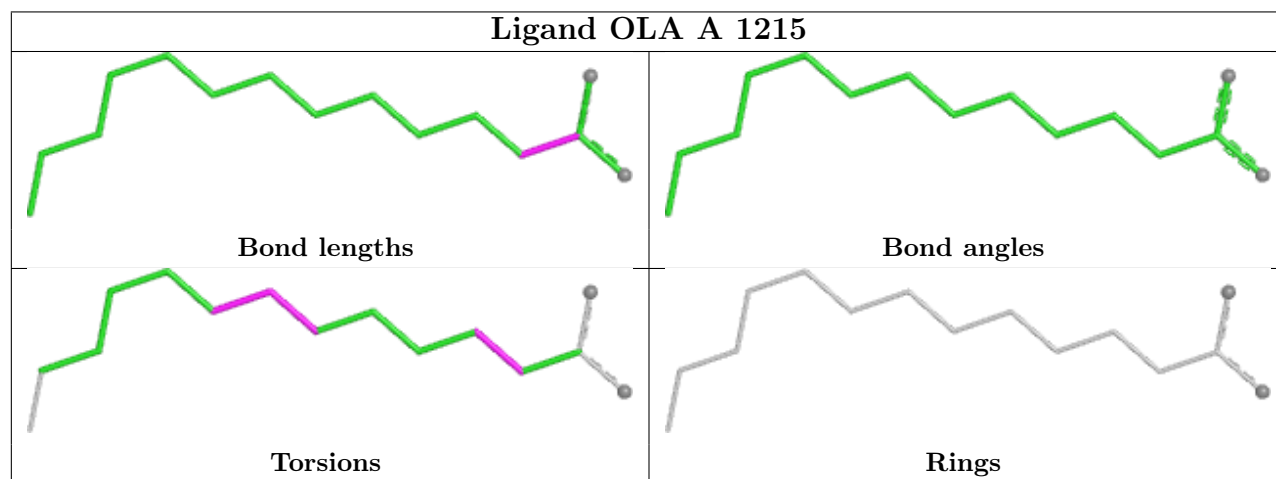




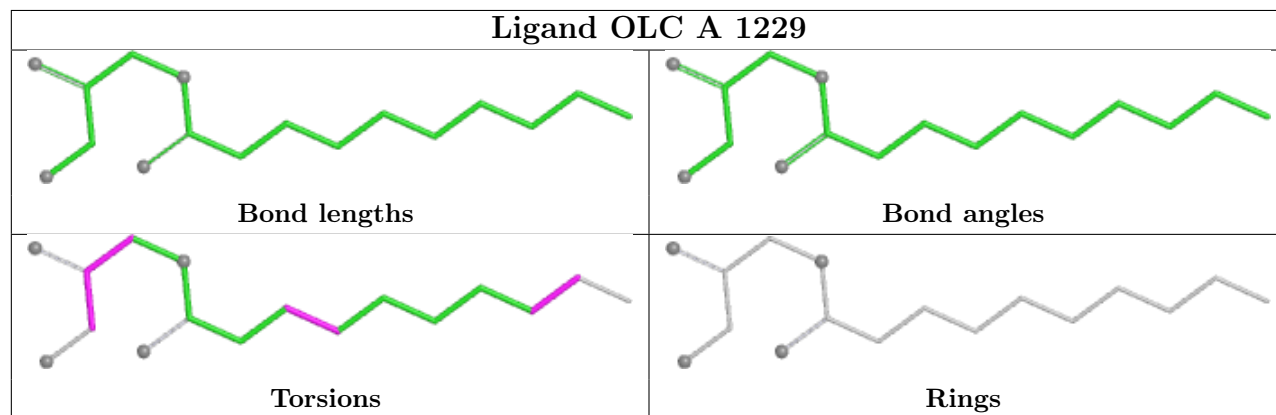
## Ligand A1C5S A 1202



## Ligand OLA A 1215



## Ligand OLC A 1229





## 5.7 Other polymers [i](#)

There are no such residues in this entry.

## 5.8 Polymer linkage issues [i](#)

There are no chain breaks in this entry.

## 6 Fit of model and data [i](#)

### 6.1 Protein, DNA and RNA chains [i](#)

In the following table, the column labelled ‘#RSRZ > 2’ contains the number (and percentage) of RSRZ outliers, followed by percent RSRZ outliers for the chain as percentile scores relative to all X-ray entries and entries of similar resolution. The OWAB column contains the minimum, median, 95<sup>th</sup> percentile and maximum values of the occupancy-weighted average B-factor per residue. The column labelled ‘Q < 0.9’ lists the number of (and percentage) of residues with an average occupancy less than 0.9.

Mol	Chain	Analysed	<RSRZ>	#RSRZ>2	OWAB(Å <sup>2</sup> )	Q<0.9
1	A	390/431 (90%)	0.04	9 (2%) 61 55	22, 55, 106, 167	6 (1%)

The worst 5 of 9 RSRZ outliers are listed below:

Mol	Chain	Res	Type	RSRZ
1	A	1005	ASP	5.6
1	A	35	SER	5.2
1	A	148	GLN	4.0
1	A	1061	PHE	3.4
1	A	1105	TYR	3.0

### 6.2 Non-standard residues in protein, DNA, RNA chains [i](#)

There are no non-standard protein/DNA/RNA residues in this entry.

### 6.3 Carbohydrates [i](#)

There are no oligosaccharides in this entry.

### 6.4 Ligands [i](#)

In the following table, the Atoms column lists the number of modelled atoms in the group and the number defined in the chemical component dictionary. The B-factors column lists the minimum, median, 95<sup>th</sup> percentile and maximum values of B factors of atoms in the group. The column labelled ‘Q < 0.9’ lists the number of atoms with occupancy less than 0.9.

Mol	Type	Chain	Res	Atoms	RSCC	RSR	B-factors(Å <sup>2</sup> )	Q<0.9
5	OLA	A	1210	8/20	0.75	0.16	64,75,96,107	0
5	OLA	A	1215	15/20	0.75	0.20	69,93,106,106	0

*Continued on next page...*

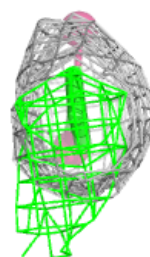
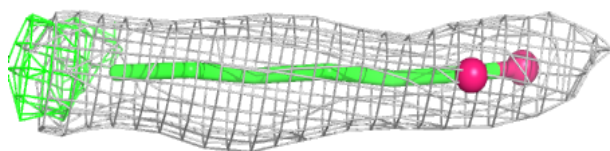
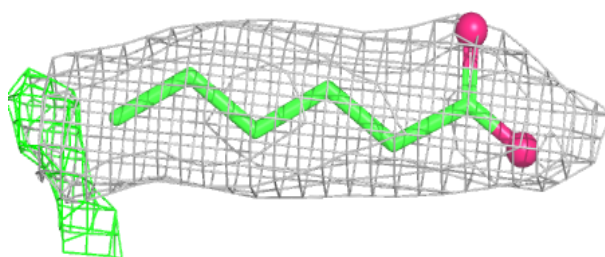
*Continued from previous page...*

Mol	Type	Chain	Res	Atoms	RSCC	RSR	B-factors( $\text{\AA}^2$ )	Q<0.9
5	OLA	A	1211	10/20	0.77	0.18	71,102,117,117	0
6	OLC	A	1219	15/25	0.78	0.17	67,86,95,101	0
5	OLA	A	1214	10/20	0.79	0.19	55,66,78,80	0
5	OLA	A	1230	20/20	0.81	0.16	60,69,97,116	0
5	OLA	A	1208	11/20	0.81	0.18	47,58,96,103	0
6	OLC	A	1218	17/25	0.83	0.15	68,81,101,115	0
5	OLA	A	1227	18/20	0.83	0.16	51,68,87,88	0
5	OLA	A	1206	15/20	0.84	0.15	52,72,97,102	0
5	OLA	A	1216	15/20	0.84	0.15	73,81,100,106	0
5	OLA	A	1213	12/20	0.85	0.18	53,71,99,105	0
5	OLA	A	1226	11/20	0.85	0.14	58,73,99,107	0
6	OLC	A	1223	21/25	0.86	0.15	46,73,86,94	0
5	OLA	A	1228	20/20	0.87	0.16	40,77,95,99	0
6	OLC	A	1229	17/25	0.87	0.14	50,70,91,100	0
8	PEG	A	1224	7/7	0.87	0.12	74,79,91,101	0
8	PEG	A	1225	7/7	0.87	0.17	99,103,111,113	0
5	OLA	A	1217	19/20	0.88	0.13	54,70,90,99	0
6	OLC	A	1222	16/25	0.88	0.15	55,65,82,87	0
7	OLB	A	1221	18/25	0.90	0.12	55,74,97,101	0
6	OLC	A	1220	22/25	0.90	0.14	40,70,94,99	0
5	OLA	A	1231	20/20	0.90	0.14	49,68,84,87	0
5	OLA	A	1212	9/20	0.91	0.13	42,64,85,97	0
5	OLA	A	1207	19/20	0.91	0.13	48,68,88,94	0
5	OLA	A	1209	9/20	0.92	0.13	43,55,71,76	0
4	CLR	A	1203	28/28	0.93	0.10	46,58,87,92	0
4	CLR	A	1204	28/28	0.94	0.10	52,66,72,83	0
2	NA	A	1201	1/1	0.96	0.10	52,52,52,52	0
4	CLR	A	1205	28/28	0.96	0.09	45,54,79,90	0
3	A1C5S	A	1202	30/30	0.97	0.07	35,45,66,68	0

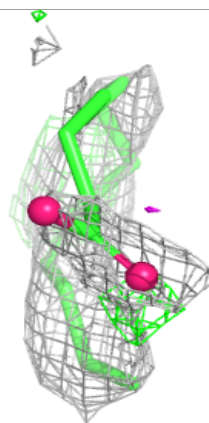
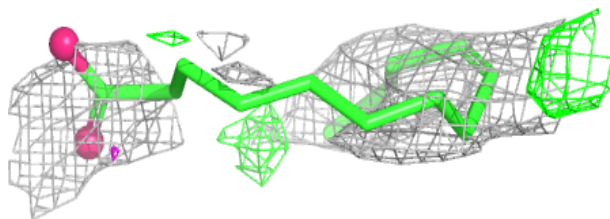
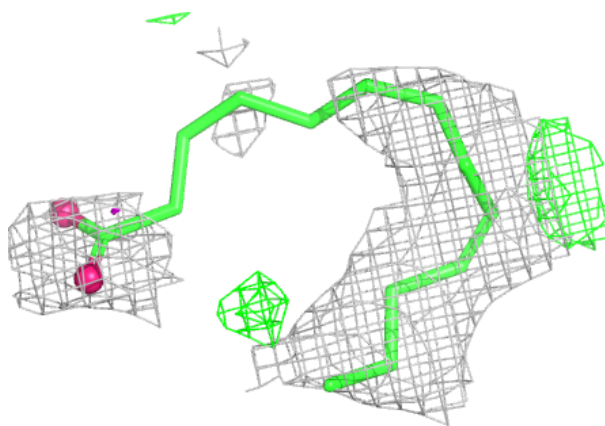
The following is a graphical depiction of the model fit to experimental electron density of all instances of the Ligand of Interest. In addition, ligands with molecular weight > 250 and outliers as shown on the geometry validation Tables will also be included. Each fit is shown from different orientation to approximate a three-dimensional view.

**Electron density around OLA A 1210:**

$2mF_o-DF_c$  (at 0.7 rmsd) in gray  
 $mF_o-DF_c$  (at 3 rmsd) in purple (negative)  
and green (positive)

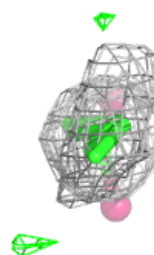
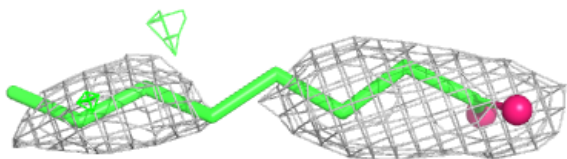
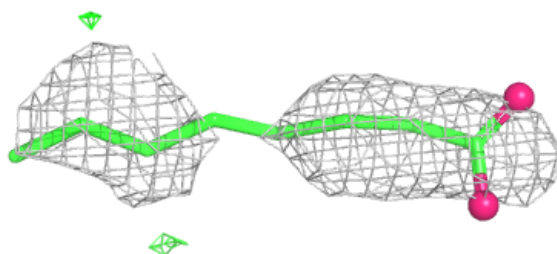
**Electron density around OLA A 1215:**

$2mF_o-DF_c$  (at 0.7 rmsd) in gray  
 $mF_o-DF_c$  (at 3 rmsd) in purple (negative)  
and green (positive)

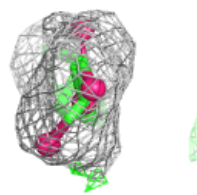
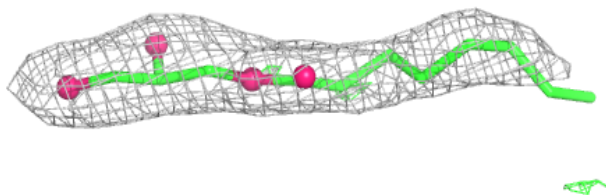
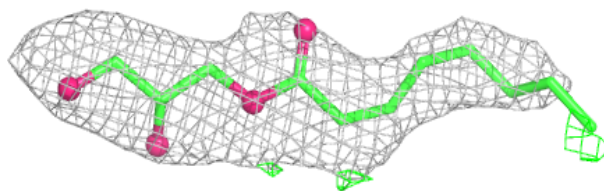


**Electron density around OLA A 1211:**

$2mF_o-DF_c$  (at 0.7 rmsd) in gray  
 $mF_o-DF_c$  (at 3 rmsd) in purple (negative)  
and green (positive)

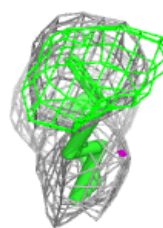
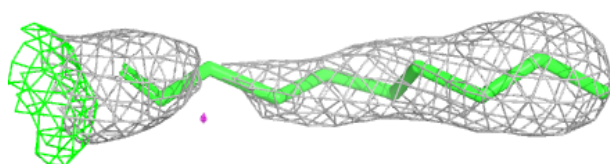
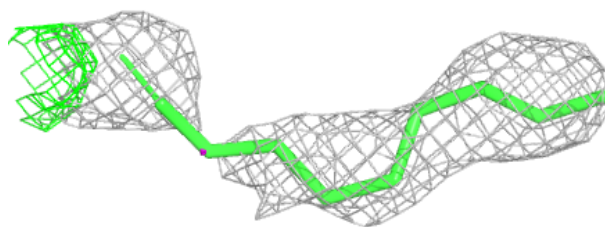
**Electron density around OLC A 1219:**

$2mF_o-DF_c$  (at 0.7 rmsd) in gray  
 $mF_o-DF_c$  (at 3 rmsd) in purple (negative)  
and green (positive)

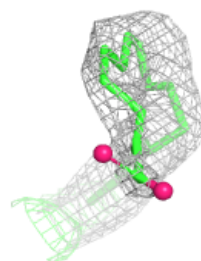
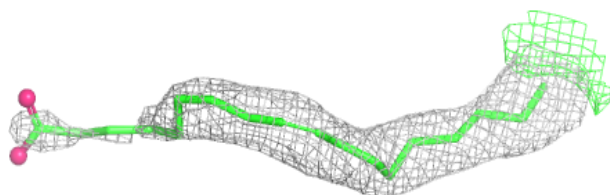
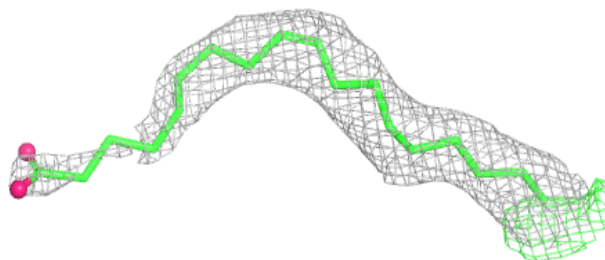


**Electron density around OLA A 1214:**

$2mF_o-DF_c$  (at 0.7 rmsd) in gray  
 $mF_o-DF_c$  (at 3 rmsd) in purple (negative)  
and green (positive)

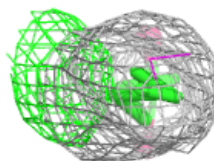
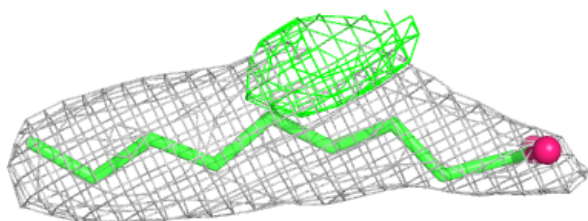
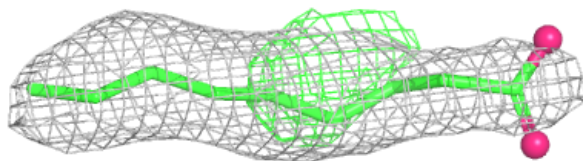
**Electron density around OLA A 1230:**

$2mF_o-DF_c$  (at 0.7 rmsd) in gray  
 $mF_o-DF_c$  (at 3 rmsd) in purple (negative)  
and green (positive)

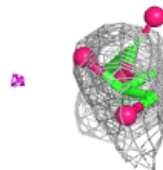
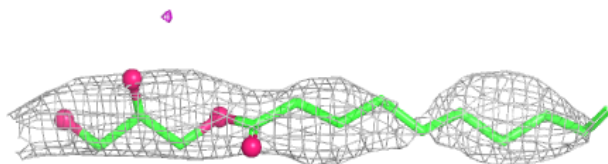
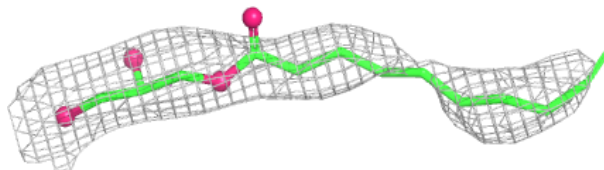


**Electron density around OLA A 1208:**

$2mF_o-DF_c$  (at 0.7 rmsd) in gray  
 $mF_o-DF_c$  (at 3 rmsd) in purple (negative)  
and green (positive)

**Electron density around OLC A 1218:**

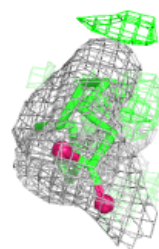
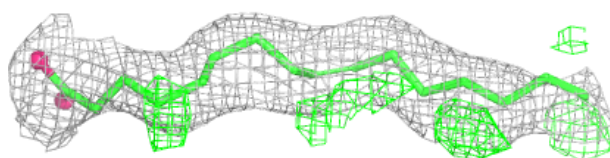
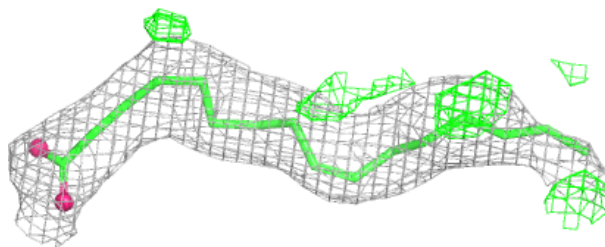
$2mF_o-DF_c$  (at 0.7 rmsd) in gray  
 $mF_o-DF_c$  (at 3 rmsd) in purple (negative)  
and green (positive)



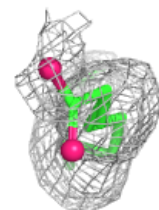
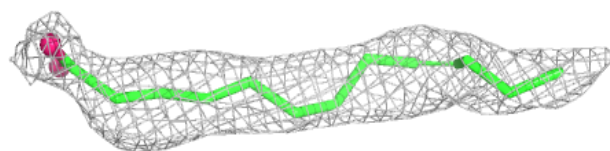
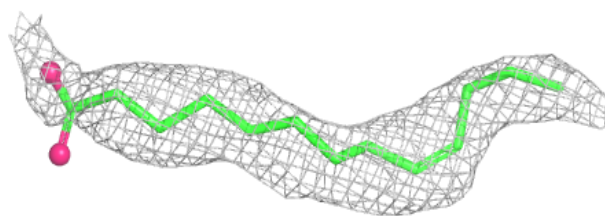


**Electron density around OLA A 1227:**

$2mF_o-DF_c$  (at 0.7 rmsd) in gray  
 $mF_o-DF_c$  (at 3 rmsd) in purple (negative)  
and green (positive)

**Electron density around OLA A 1206:**

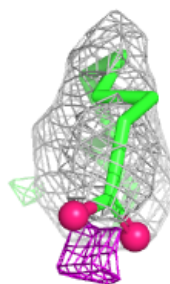
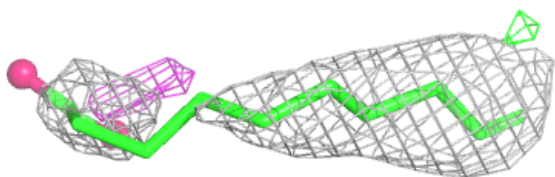
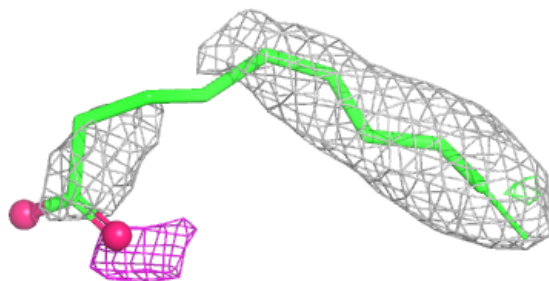
$2mF_o-DF_c$  (at 0.7 rmsd) in gray  
 $mF_o-DF_c$  (at 3 rmsd) in purple (negative)  
and green (positive)



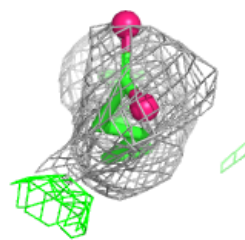
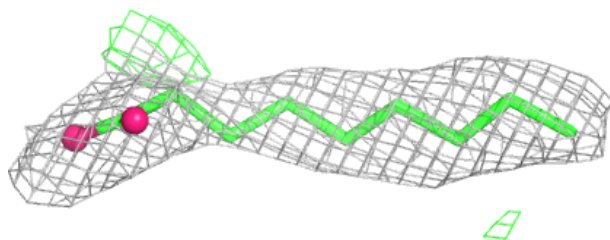
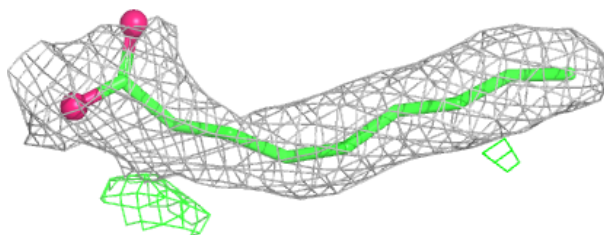


**Electron density around OLA A 1213:**

$2mF_o-DF_c$  (at 0.7 rmsd) in gray  
 $mF_o-DF_c$  (at 3 rmsd) in purple (negative)  
and green (positive)

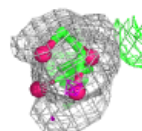
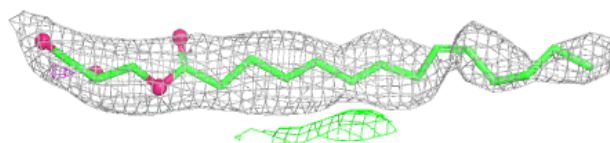
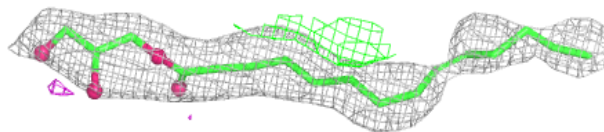
**Electron density around OLA A 1226:**

$2mF_o-DF_c$  (at 0.7 rmsd) in gray  
 $mF_o-DF_c$  (at 3 rmsd) in purple (negative)  
and green (positive)

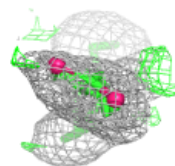
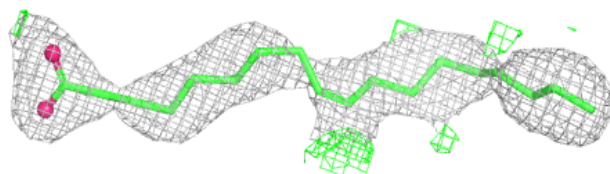
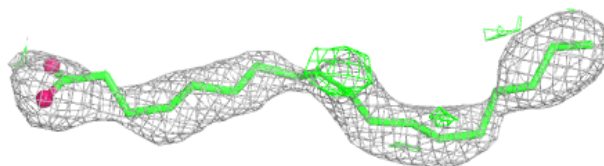


**Electron density around OLC A 1223:**

$2mF_o-DF_c$  (at 0.7 rmsd) in gray  
 $mF_o-DF_c$  (at 3 rmsd) in purple (negative)  
and green (positive)

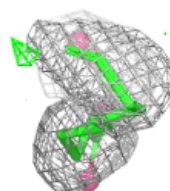
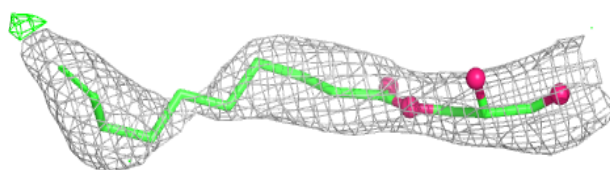
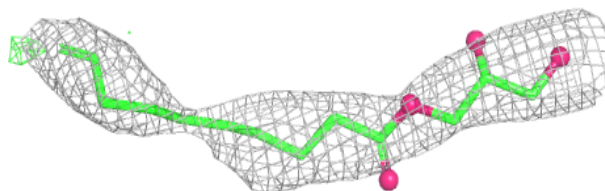
**Electron density around OLA A 1228:**

$2mF_o-DF_c$  (at 0.7 rmsd) in gray  
 $mF_o-DF_c$  (at 3 rmsd) in purple (negative)  
and green (positive)

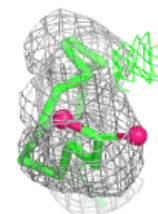
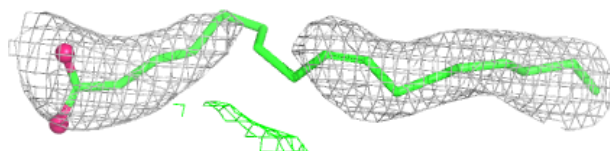
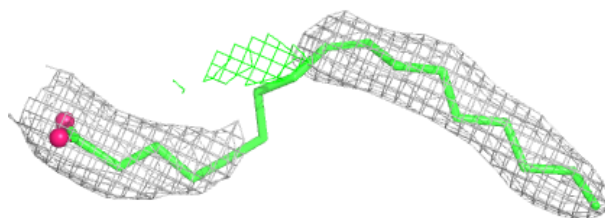


**Electron density around OLC A 1229:**

$2mF_o-DF_c$  (at 0.7 rmsd) in gray  
 $mF_o-DF_c$  (at 3 rmsd) in purple (negative)  
and green (positive)

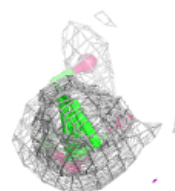
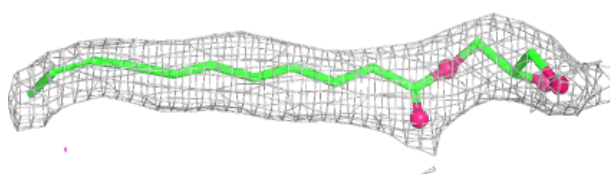
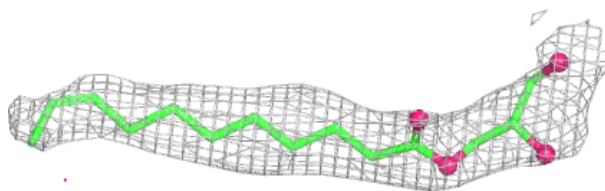
**Electron density around OLA A 1217:**

$2mF_o-DF_c$  (at 0.7 rmsd) in gray  
 $mF_o-DF_c$  (at 3 rmsd) in purple (negative)  
and green (positive)

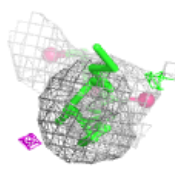
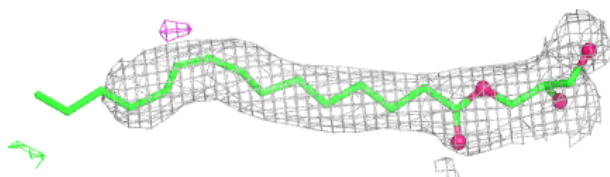
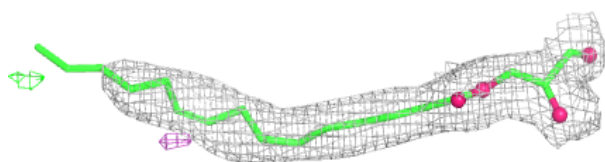


**Electron density around OLB A 1221:**

$2mF_o-DF_c$  (at 0.7 rmsd) in gray  
 $mF_o-DF_c$  (at 3 rmsd) in purple (negative)  
and green (positive)

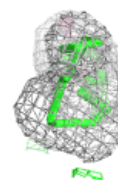
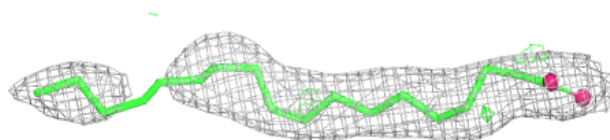
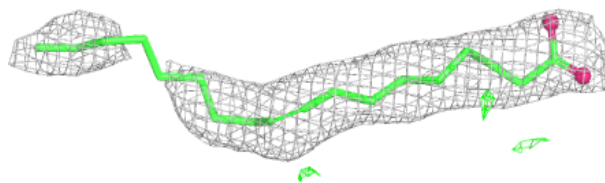
**Electron density around OLC A 1220:**

$2mF_o-DF_c$  (at 0.7 rmsd) in gray  
 $mF_o-DF_c$  (at 3 rmsd) in purple (negative)  
and green (positive)

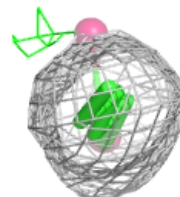
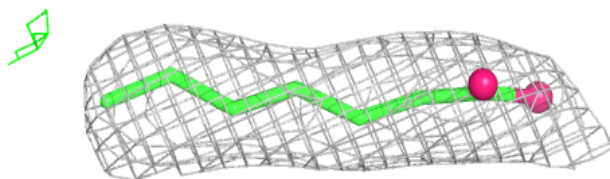
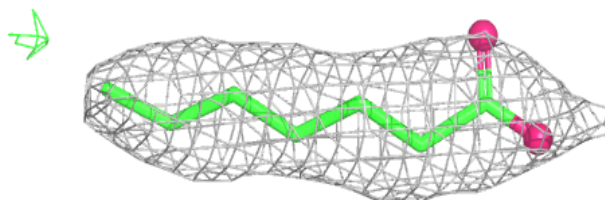


**Electron density around OLA A 1231:**

$2mF_o-DF_c$  (at 0.7 rmsd) in gray  
 $mF_o-DF_c$  (at 3 rmsd) in purple (negative)  
and green (positive)

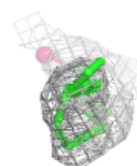
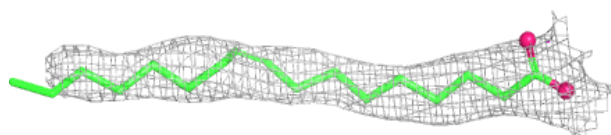
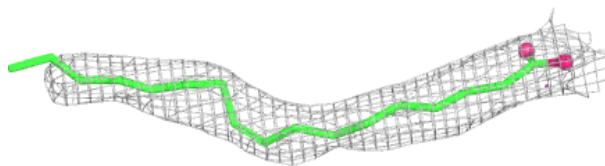
**Electron density around OLA A 1212:**

$2mF_o-DF_c$  (at 0.7 rmsd) in gray  
 $mF_o-DF_c$  (at 3 rmsd) in purple (negative)  
and green (positive)

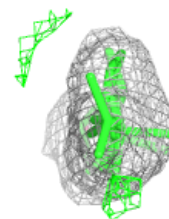
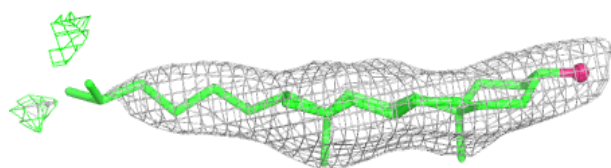
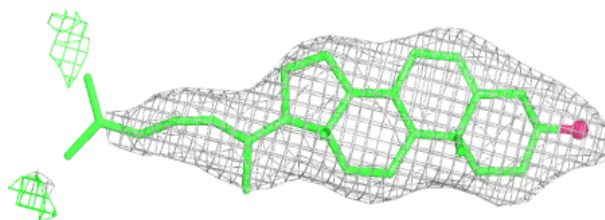


**Electron density around OLA A 1207:**

$2mF_o-DF_c$  (at 0.7 rmsd) in gray  
 $mF_o-DF_c$  (at 3 rmsd) in purple (negative)  
and green (positive)

**Electron density around CLR A 1203:**

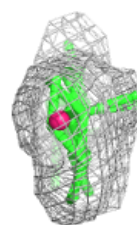
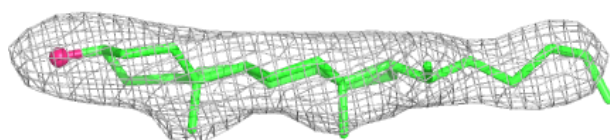
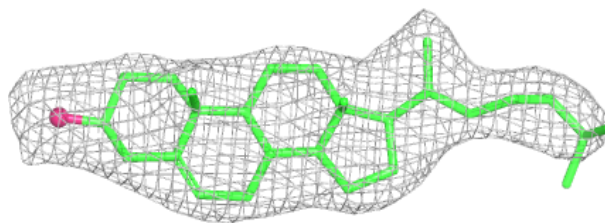
$2mF_o-DF_c$  (at 0.7 rmsd) in gray  
 $mF_o-DF_c$  (at 3 rmsd) in purple (negative)  
and green (positive)



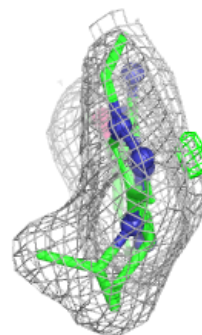
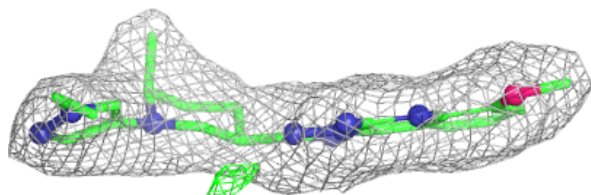
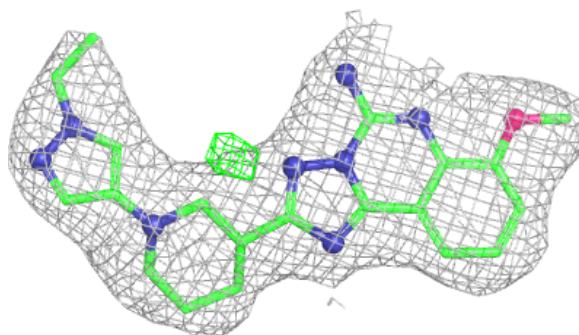


**Electron density around CLR A 1205:**

$2mF_o-DF_c$  (at 0.7 rmsd) in gray  
 $mF_o-DF_c$  (at 3 rmsd) in purple (negative)  
and green (positive)

**Electron density around A1C5S A 1202:**

$2mF_o-DF_c$  (at 0.7 rmsd) in gray  
 $mF_o-DF_c$  (at 3 rmsd) in purple (negative)  
and green (positive)



## 6.5 Other polymers [i](#)

There are no such residues in this entry.