



Full wwPDB EM Validation Report ⓘ

Mar 8, 2026 – 04:57 PM UTC

EMDB ID : EMD-1094
Title : Electron microscopic analysis of KvAP voltage-dependent K⁺ channels in an open conformation.
Authors : Jiang, Q.X.; Wang, D.N.; MacKinnon, R.
Deposited on : 2004-05-26
Resolution : 10.50 Å(reported)

This is a Full wwPDB EM Validation Report for a publicly released PDB entry.

We welcome your comments at validation@mail.wwpdb.org

A user guide is available at

<https://www.wwpdb.org/validation/2017/EMMapValidationReportHelp>

with specific help available everywhere you see the ⓘ symbol.

The types of validation reports are described at

<http://www.wwpdb.org/validation/2017/FAQs#types>.

The following versions of software and data (see [references ⓘ](#)) were used in the production of this report:

EMDB validation analysis : 0.0.1.dev132
Validation Pipeline (wwPDB-VP) : 2.49

1 Experimental information

Property	Value	Source
EM reconstruction method	SINGLE PARTICLE	Depositor
Imposed symmetry	POINT, C4	Depositor
Number of particles used	21379	Depositor
Resolution determination method	FSC 0.5 CUT-OFF	Depositor
CTF correction method	each particle	Depositor
Microscope	FEI/PHILIPS CM200T	Depositor
Voltage (kV)	200	Depositor
Electron dose ($e^-/\text{\AA}^2$)	20	Depositor
Minimum defocus (nm)	0.5	Depositor
Maximum defocus (nm)	1.1	Depositor
Magnification	50000.0	Depositor
Image detector	KODAK SO-163 FILM	Depositor
Maximum map value	8.158	Depositor
Minimum map value	-10.737	Depositor
Average map value	0.076	Depositor
Map value standard deviation	1.004	Depositor
Recommended contour level	2.12	Depositor
Map size (Å)	168, 168, 168	wwPDB
Map dimensions	60, 60, 60	wwPDB
Map angles (°)	90, 90, 90	wwPDB
Pixel spacing (Å)	2.8, 2.8, 2.8	Depositor

2 Map visualisation [i](#)

This section contains visualisations of the EMDB entry EMD-1094. These allow visual inspection of the internal detail of the map and identification of artifacts.

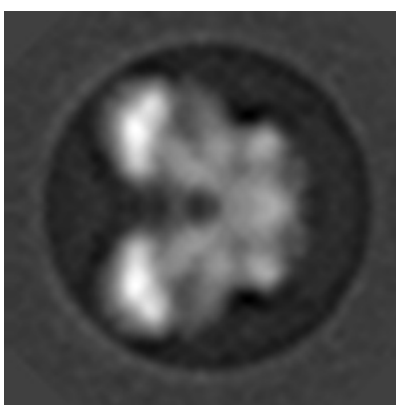
No raw map or half-maps were deposited for this entry and therefore no images, graphs, etc. pertaining to the raw map can be shown.

2.1 Orthogonal projections [i](#)

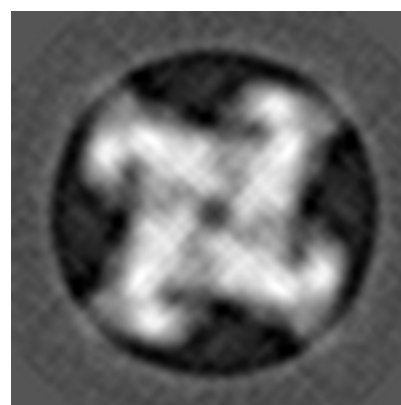
2.1.1 Primary map



X



Y

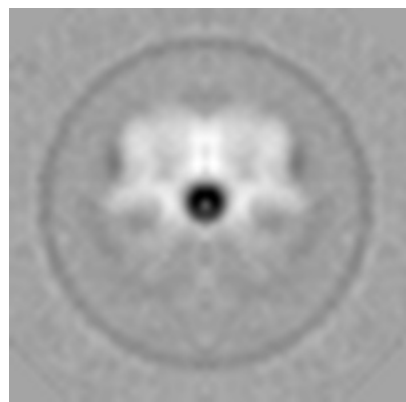


Z

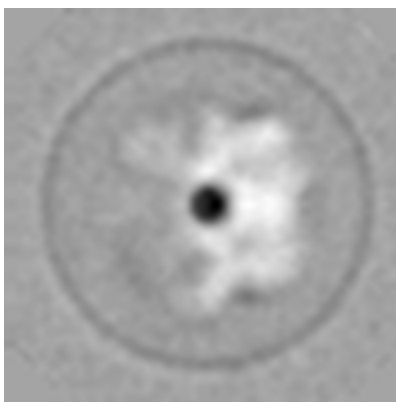
The images above show the map projected in three orthogonal directions.

2.2 Central slices [i](#)

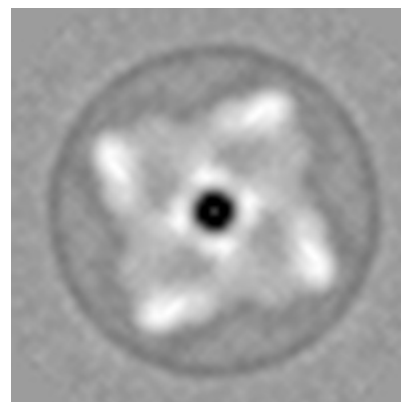
2.2.1 Primary map



X Index: 30



Y Index: 30

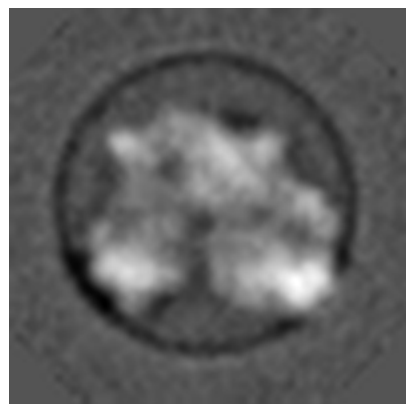


Z Index: 30

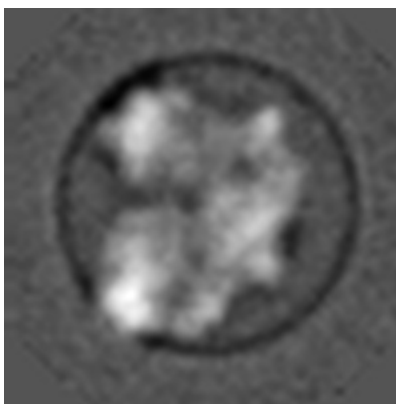
The images above show central slices of the map in three orthogonal directions.

2.3 Largest variance slices [i](#)

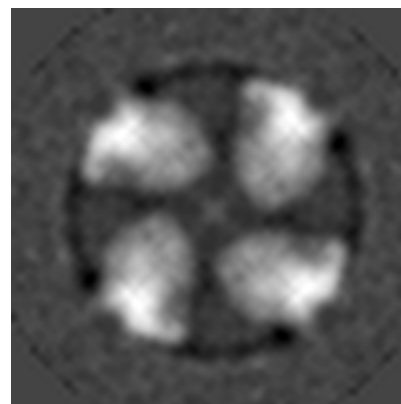
2.3.1 Primary map



X Index: 40



Y Index: 39

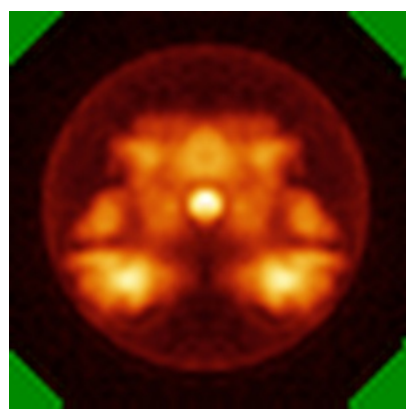


Z Index: 19

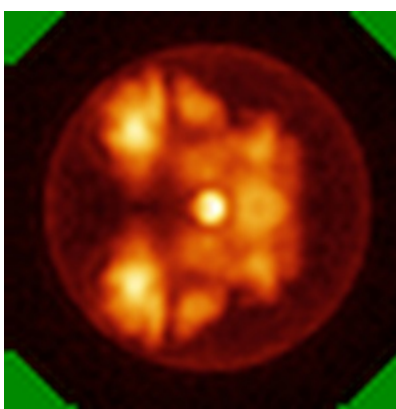
The images above show the largest variance slices of the map in three orthogonal directions.

2.4 Orthogonal standard-deviation projections (False-color) [i](#)

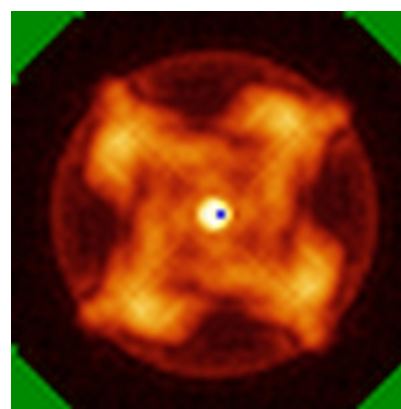
2.4.1 Primary map



X



Y

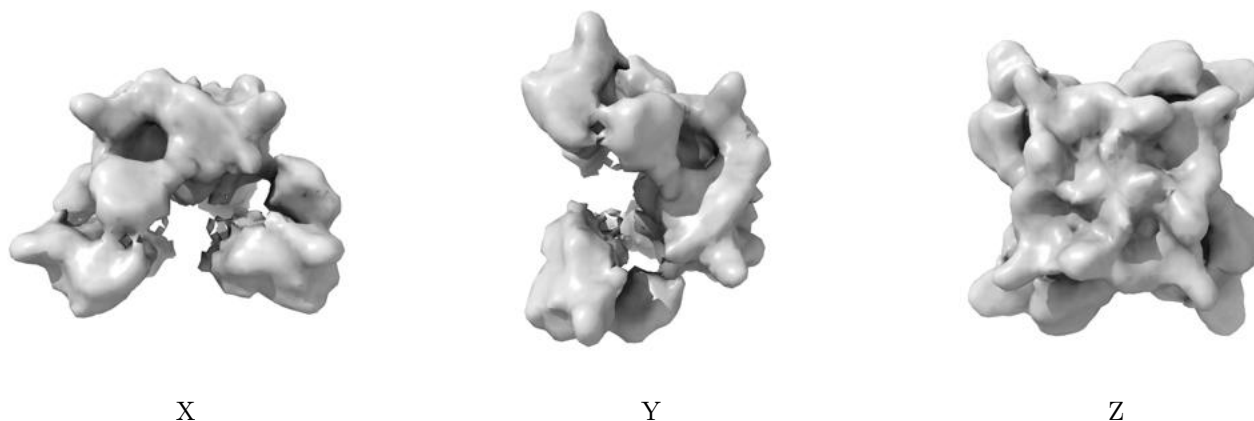


Z

The images above show the map standard deviation projections with false color in three orthogonal directions. Minimum values are shown in green, max in blue, and dark to light orange shades represent small to large values respectively.

2.5 Orthogonal surface views [i](#)

2.5.1 Primary map



The images above show the 3D surface view of the map at the recommended contour level 2.12. These images, in conjunction with the slice images, may facilitate assessment of whether an appropriate contour level has been provided.

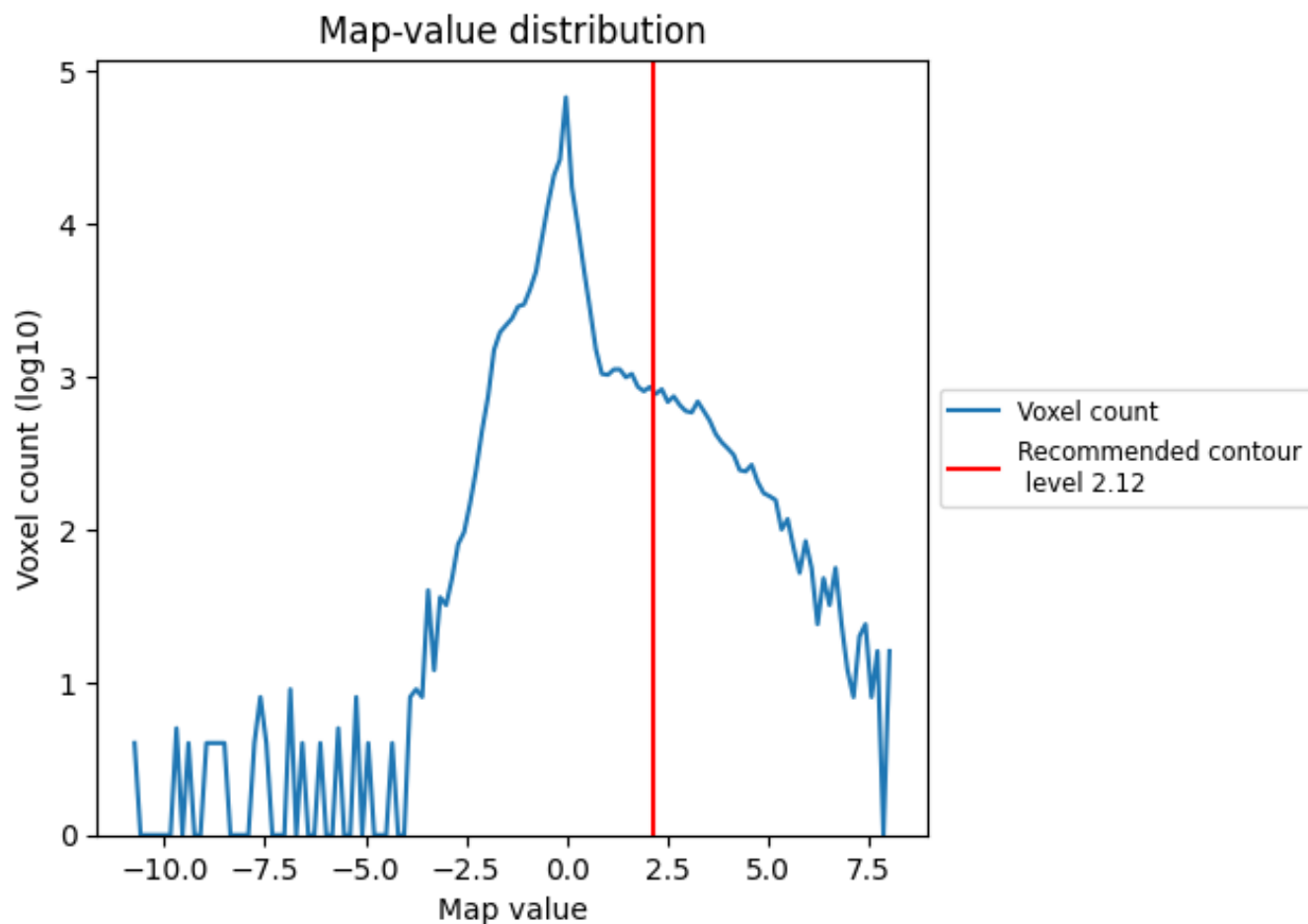
2.6 Mask visualisation [i](#)

This section was not generated. No masks/segmentation were deposited.

3 Map analysis [i](#)

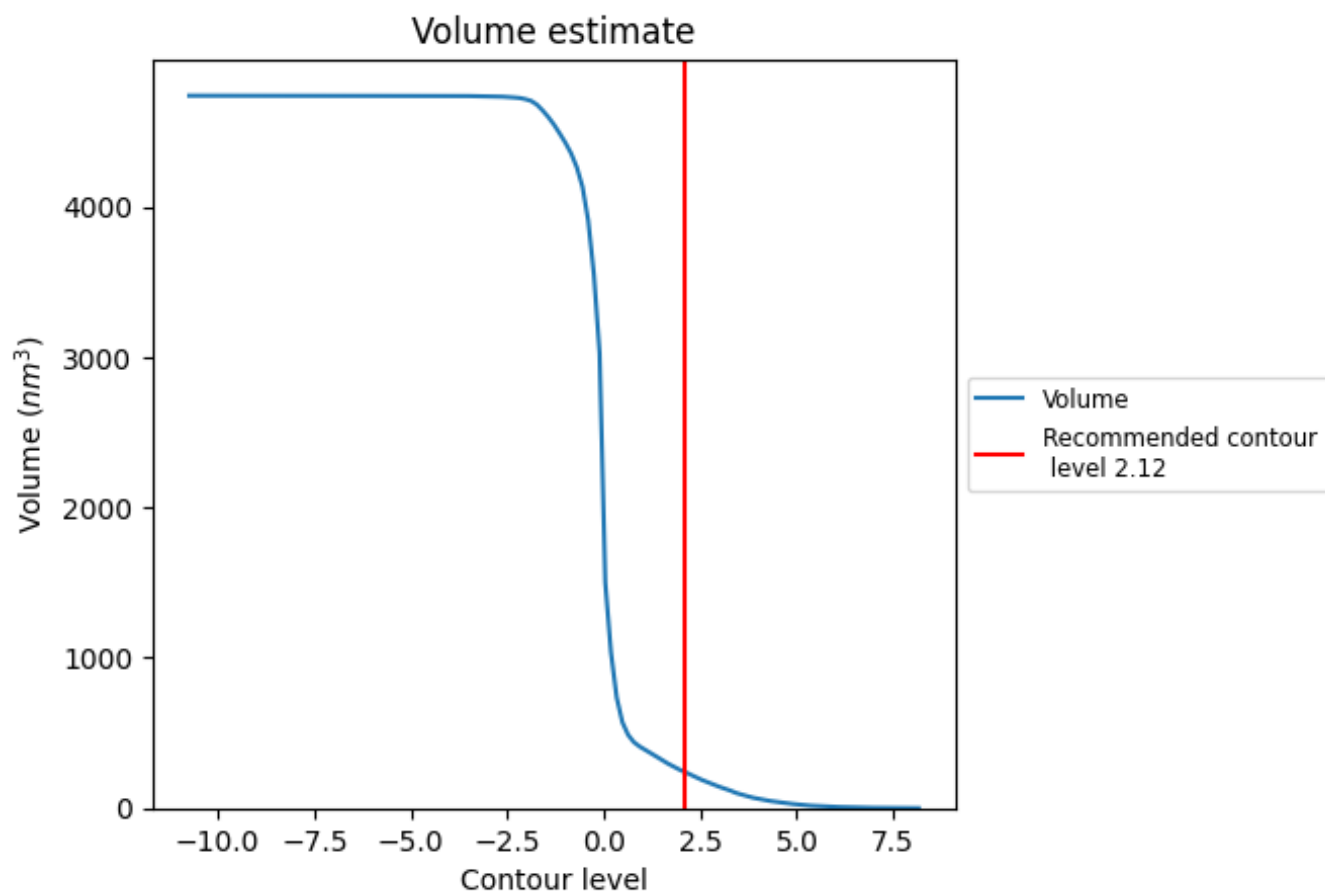
This section contains the results of statistical analysis of the map.

3.1 Map-value distribution [i](#)



The map-value distribution is plotted in 128 intervals along the x-axis. The y-axis is logarithmic. A spike in this graph at zero usually indicates that the volume has been masked.

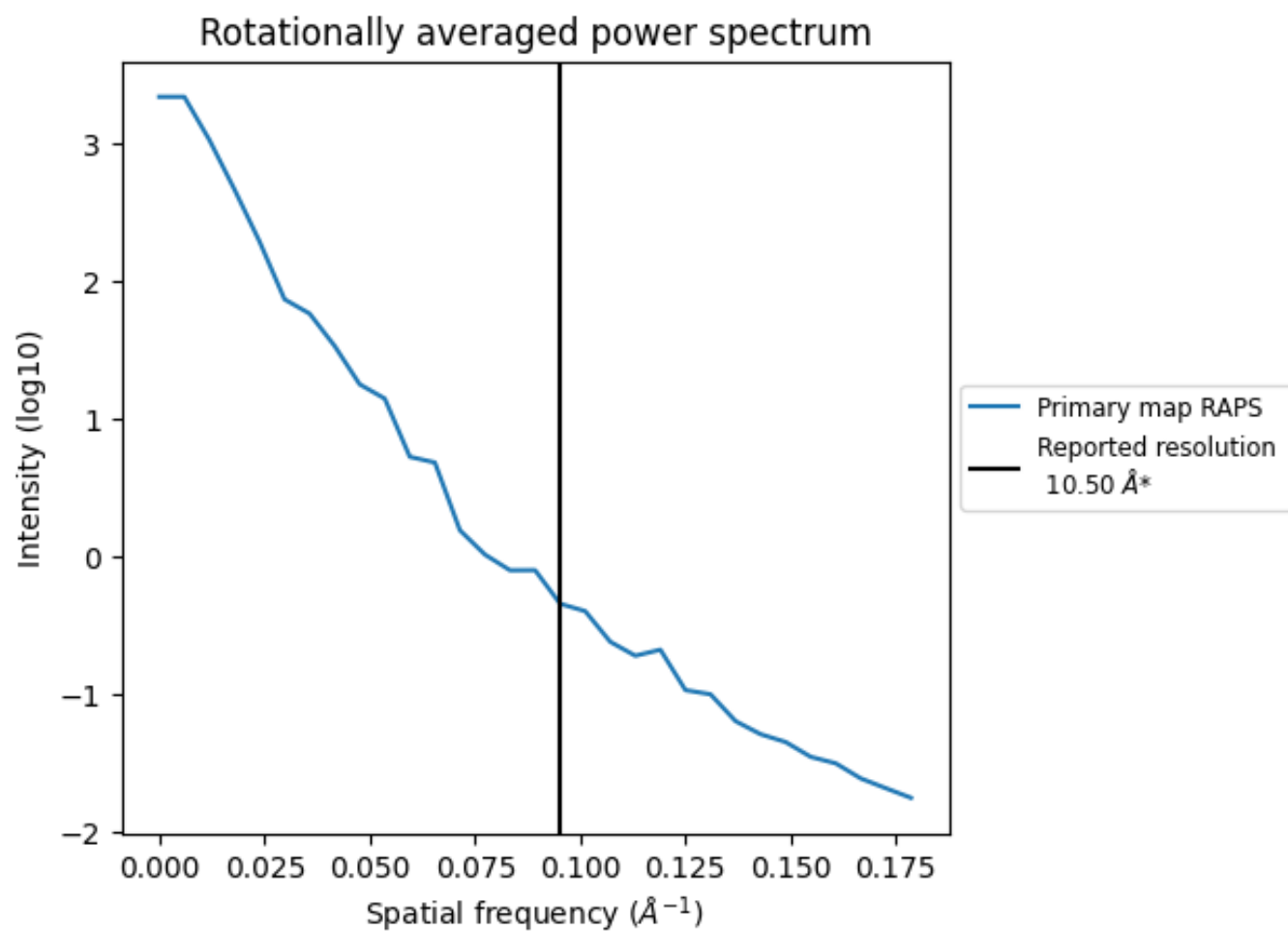
3.2 Volume estimate [i](#)



The volume at the recommended contour level is 238 nm^3 ; this corresponds to an approximate mass of 215 kDa.

The volume estimate graph shows how the enclosed volume varies with the contour level. The recommended contour level is shown as a vertical line and the intersection between the line and the curve gives the volume of the enclosed surface at the given level.

3.3 Rotationally averaged power spectrum ⓘ



*Reported resolution corresponds to spatial frequency of 0.095 Å⁻¹

4 Fourier-Shell correlation ⓘ

This section was not generated. No FSC curve or half-maps provided.