



Full wwPDB EM Validation Report ⓘ

Mar 10, 2026 – 03:17 AM UTC

EMDB ID : EMD-1088
Title : Structure of the acrosomal bundle.
Authors : Schmid, M.F.; Sherman, M.B.; Matsudaira, P.; Chiu, W.
Deposited on : 2004-07-01
Resolution : 9.50 Å(reported)

This is a Full wwPDB EM Validation Report for a publicly released PDB entry.

We welcome your comments at validation@mail.wwpdb.org

A user guide is available at

<https://www.wwpdb.org/validation/2017/EMMapValidationReportHelp>

with specific help available everywhere you see the ⓘ symbol.

The types of validation reports are described at

<http://www.wwpdb.org/validation/2017/FAQs#types>.

The following versions of software and data (see [references ⓘ](#)) were used in the production of this report:

EMDB validation analysis : 0.0.1.dev132
Validation Pipeline (wwPDB-VP) : 2.49

1 Experimental information

Property	Value	Source
EM reconstruction method	HELICAL	Depositor
Imposed symmetry	2D CRYSTAL, $a=145$ Å, $b=145$ Å, $c=765$ Å, $\gamma=120^\circ$, space group=Not provided	Depositor
Number of segments used	Not provided	
Resolution determination method	OTHER	Depositor
CTF correction method	each bundle	Depositor
Microscope	JEOL 4000EX	Depositor
Voltage (kV)	400	Depositor
Electron dose ($e^-/\text{\AA}^2$)	15	Depositor
Minimum defocus (nm)	0.8	Depositor
Maximum defocus (nm)	3.0	Depositor
Magnification	40000.0	Depositor
Image detector	KODAK SO-163 FILM	Depositor
Maximum map value	977.199	Depositor
Minimum map value	-974.403	Depositor
Average map value	-0.000	Depositor
Map value standard deviation	215.097	Depositor
Recommended contour level	430	Depositor
Map size (Å)	255.99936, 148.00015, 765.7977	wwPDB
Map dimensions	576, 192, 112	wwPDB
Map angles ($^\circ$)	90.0, 90.0, 90.0	wwPDB
Pixel spacing (Å)	1.33333, 1.32143, 1.32951	Depositor

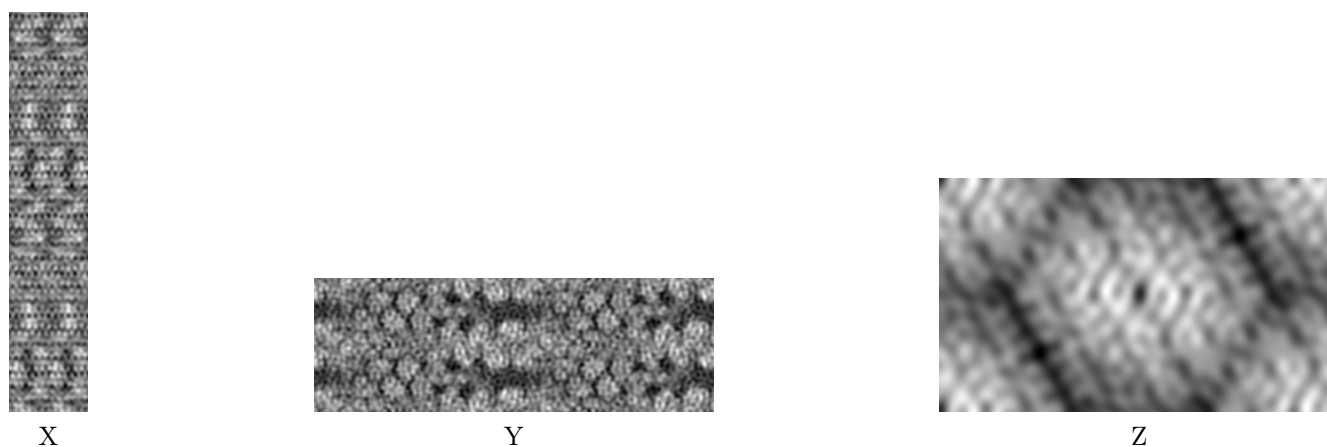
2 Map visualisation [i](#)

This section contains visualisations of the EMDB entry EMD-1088. These allow visual inspection of the internal detail of the map and identification of artifacts.

No raw map or half-maps were deposited for this entry and therefore no images, graphs, etc. pertaining to the raw map can be shown.

2.1 Orthogonal projections [i](#)

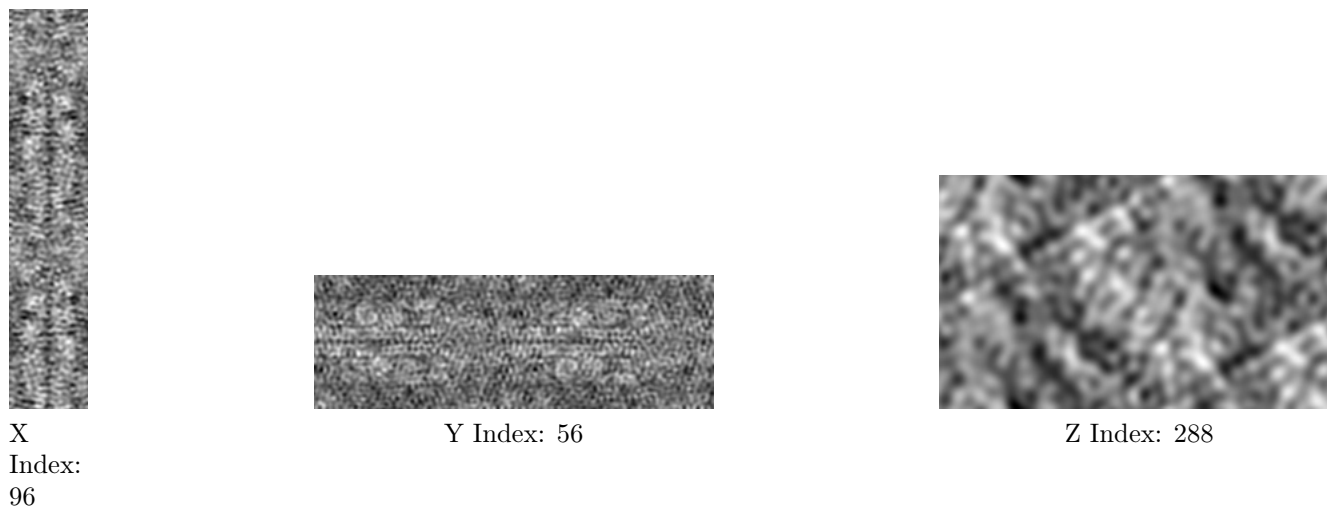
2.1.1 Primary map



The images above show the map projected in three orthogonal directions.

2.2 Central slices [i](#)

2.2.1 Primary map



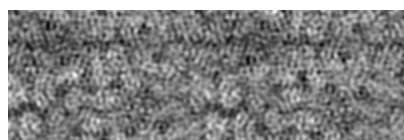
The images above show central slices of the map in three orthogonal directions.

2.3 Largest variance slices [i](#)

2.3.1 Primary map



X
Index:
123



Y Index: 84

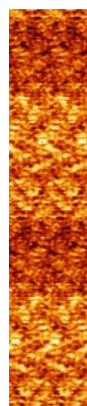


Z Index: 413

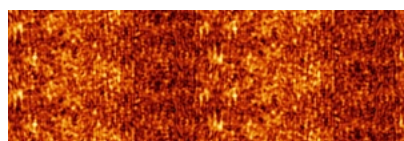
The images above show the largest variance slices of the map in three orthogonal directions.

2.4 Orthogonal standard-deviation projections (False-color) [i](#)

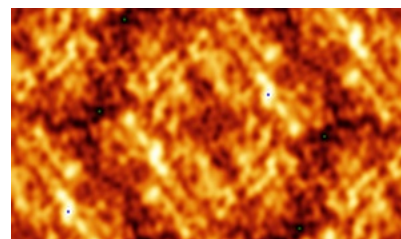
2.4.1 Primary map



X



Y



Z

The images above show the map standard deviation projections with false color in three orthogonal directions. Minimum values are shown in green, max in blue, and dark to light orange shades represent small to large values respectively.

2.5 Orthogonal surface views [i](#)

2.5.1 Primary map



X



Y



Z

The images above show the 3D surface view of the map at the recommended contour level 430.0. These images, in conjunction with the slice images, may facilitate assessment of whether an appropriate contour level has been provided.

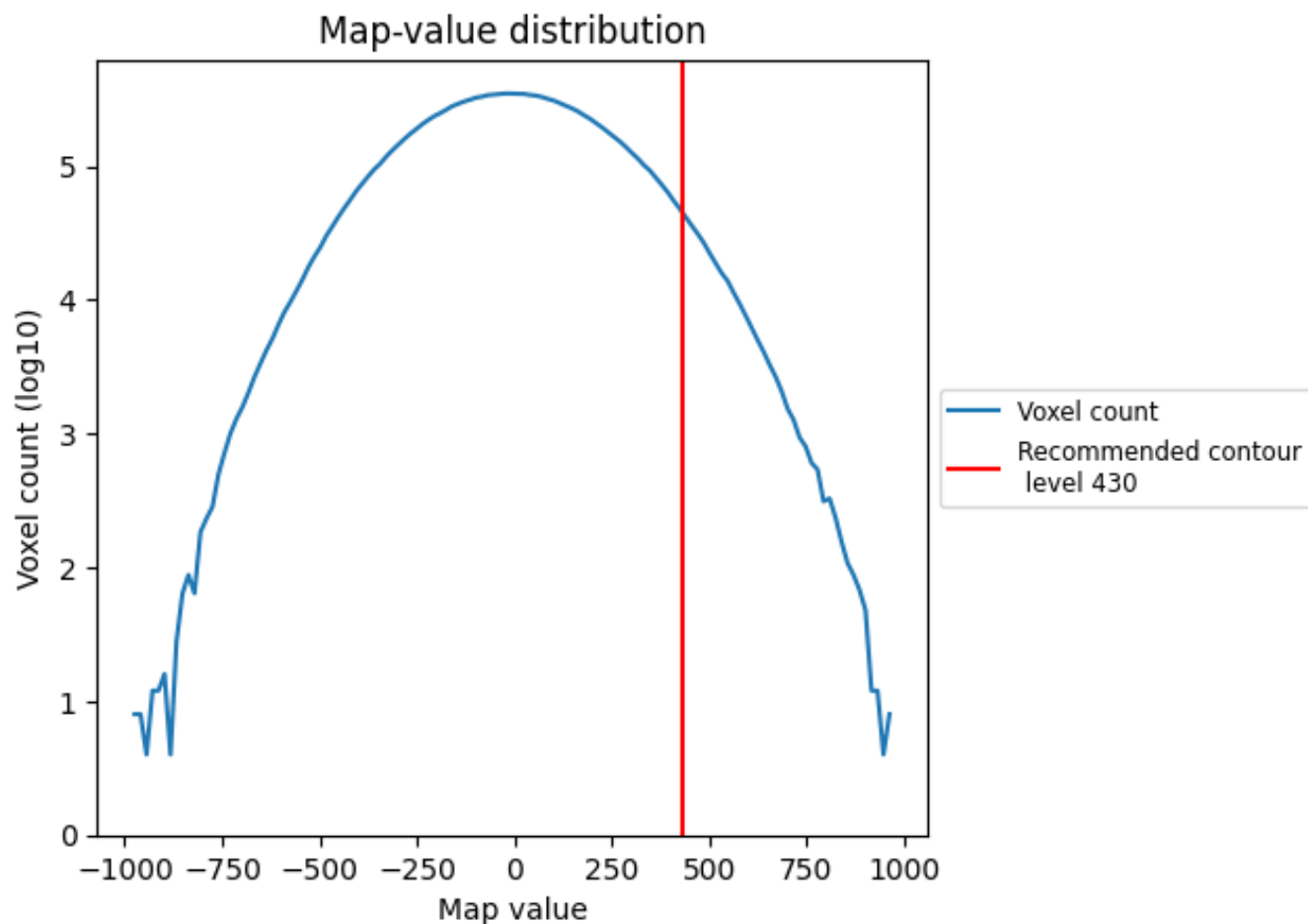
2.6 Mask visualisation [i](#)

This section was not generated. No masks/segmentation were deposited.

3 Map analysis [i](#)

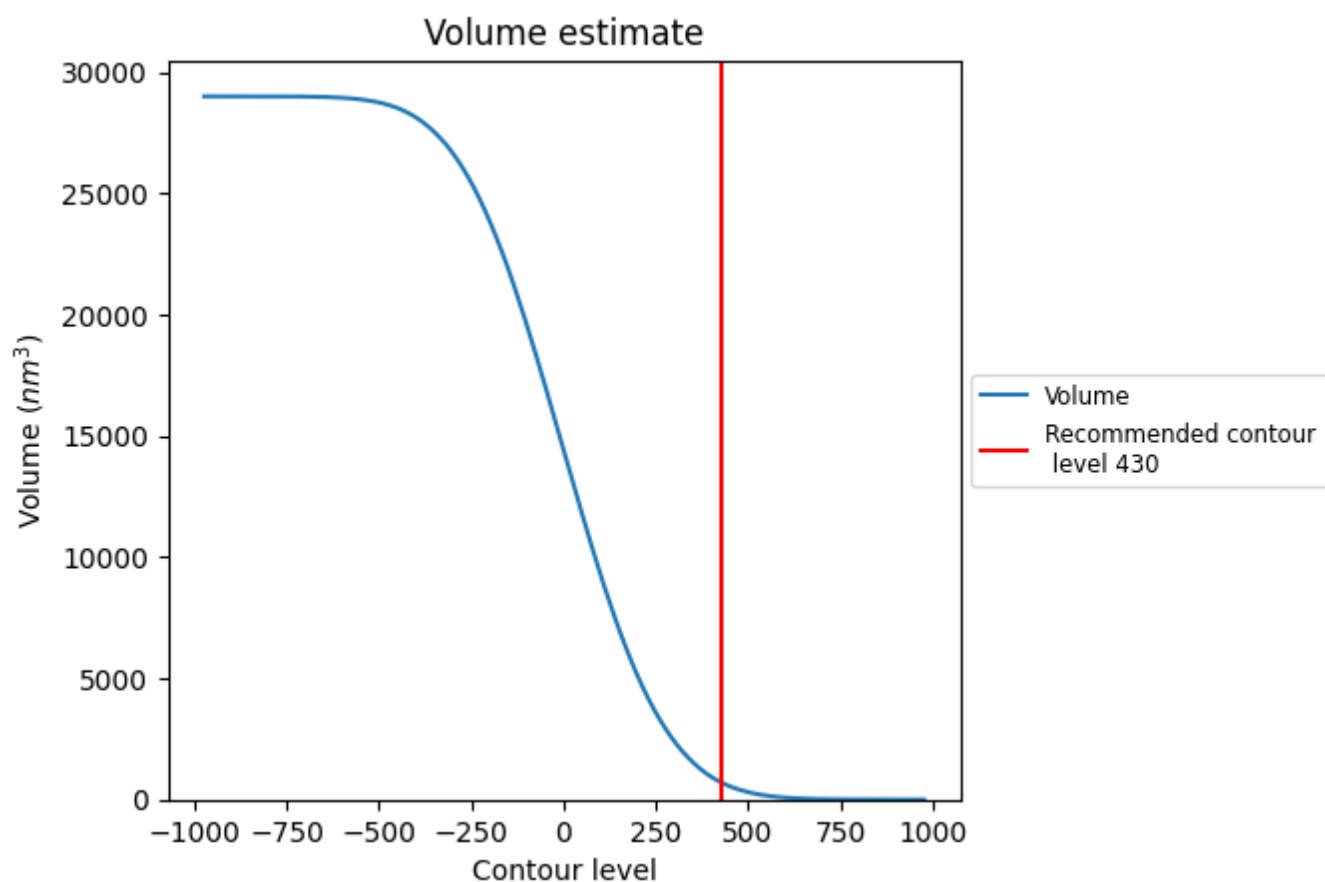
This section contains the results of statistical analysis of the map.

3.1 Map-value distribution [i](#)



The map-value distribution is plotted in 128 intervals along the x-axis. The y-axis is logarithmic. A spike in this graph at zero usually indicates that the volume has been masked.

3.2 Volume estimate [i](#)



The volume at the recommended contour level is 687 nm³; this corresponds to an approximate mass of 621 kDa.

The volume estimate graph shows how the enclosed volume varies with the contour level. The recommended contour level is shown as a vertical line and the intersection between the line and the curve gives the volume of the enclosed surface at the given level.

3.3 Rotationally averaged power spectrum [i](#)

This section was not generated. The rotationally averaged power spectrum is only generated for cubic maps.

4 Fourier-Shell correlation ⓘ

This section was not generated. No FSC curve or half-maps provided.