



wwPDB EM Validation Summary Report ⓘ

Mar 8, 2026 – 05:34 PM UTC

EMDB ID : EMD-1052
Title : Untangling desmosomal knots with electron tomography.
Authors : He, W.; Cowin, P.; Stokes, D.L.
Deposited on : 2003-08-28
Resolution : 30.00 Å(reported)

This is a wwPDB EM Validation Summary Report for a publicly released PDB entry.

We welcome your comments at validation@mail.wwpdb.org

A user guide is available at

<https://www.wwpdb.org/validation/2017/EMTomogramValidationReportHelp>

with specific help available everywhere you see the ⓘ symbol.

The types of validation reports are described at

<http://www.wwpdb.org/validation/2017/FAQs#types>.

The following versions of software and data (see [references ⓘ](#)) were used in the production of this report:

EMDB validation analysis : 0.0.1.dev132
Validation Pipeline (wwPDB-VP) : 2.49

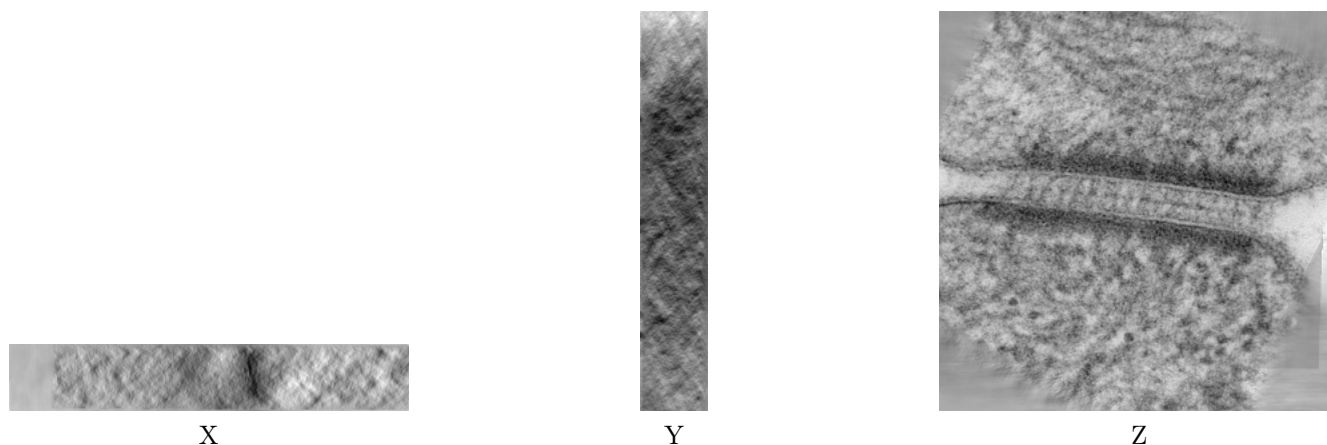
1 Experimental information

| Property | Value | Source |
|--------------------------------------|--------------------------|-----------|
| EM reconstruction method | TOMOGRAPHY | Depositor |
| Imposed symmetry | Not Provided | |
| Number of tilted images used | 150 | Depositor |
| Resolution determination method | OTHER | Depositor |
| CTF correction method | no CTF correction | Depositor |
| Microscope | FEI/PHILIPS CM200FEG | Depositor |
| Voltage (kV) | 200 | Depositor |
| Electron dose ($e^-/\text{\AA}^2$) | Not provided | |
| Minimum defocus (nm) | 0.3 | Depositor |
| Maximum defocus (nm) | 0.5 | Depositor |
| Magnification | 50000.0 | Depositor |
| Image detector | GATAN MULTISCAN | Depositor |
| Maximum voxel value | 2603.000 | Depositor |
| Minimum voxel value | -1866.000 | Depositor |
| Average voxel value | 1323.980 | Depositor |
| Voxel value standard deviation | 218.755 | Depositor |
| Recommended contour level | 1760 | Depositor |
| Tomogram size (\AA) | 3720.19, 3720.19, 617.61 | wwPDB |
| Tomogram dimensions | 512, 512, 85 | wwPDB |
| Tomogram angles ($^\circ$) | 90, 90, 90 | wwPDB |
| Grid spacing (\AA) | 7.266, 7.266, 7.266 | Depositor |

2 Tomogram visualisation [i](#)

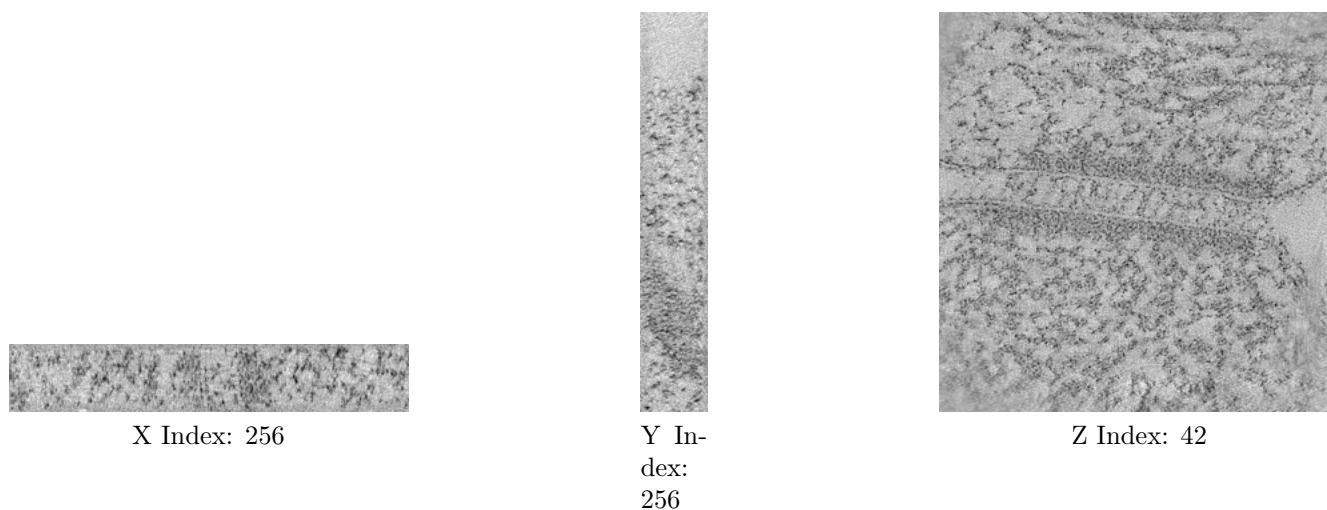
This section contains visualisations of the EMDB entry EMD-1052. These allow visual inspection of the internal detail of the tomogram and identification of artifacts.

2.1 Orthogonal projections [i](#)



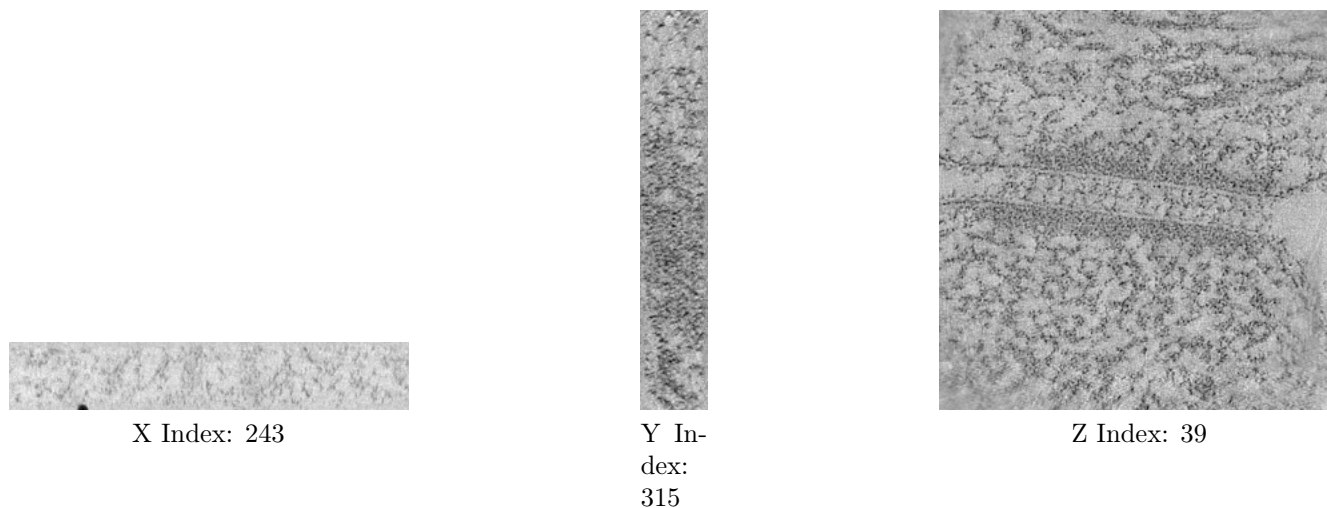
The images above show the tomogram projected in three orthogonal directions.

2.2 Central slices [i](#)



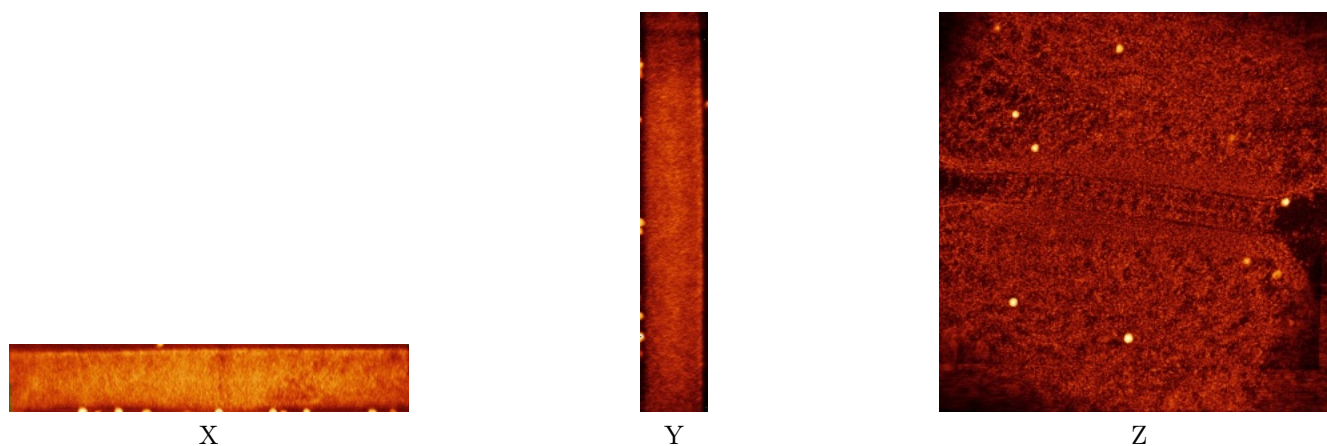
The images above show central slices of the tomogram in three orthogonal directions.

2.3 Largest variance slices [i](#)



The images above show the largest variance slices of the tomogram in three orthogonal directions.

2.4 Orthogonal standard-deviation projections (False-color) [i](#)



The images above show the tomogram projected in three orthogonal directions.

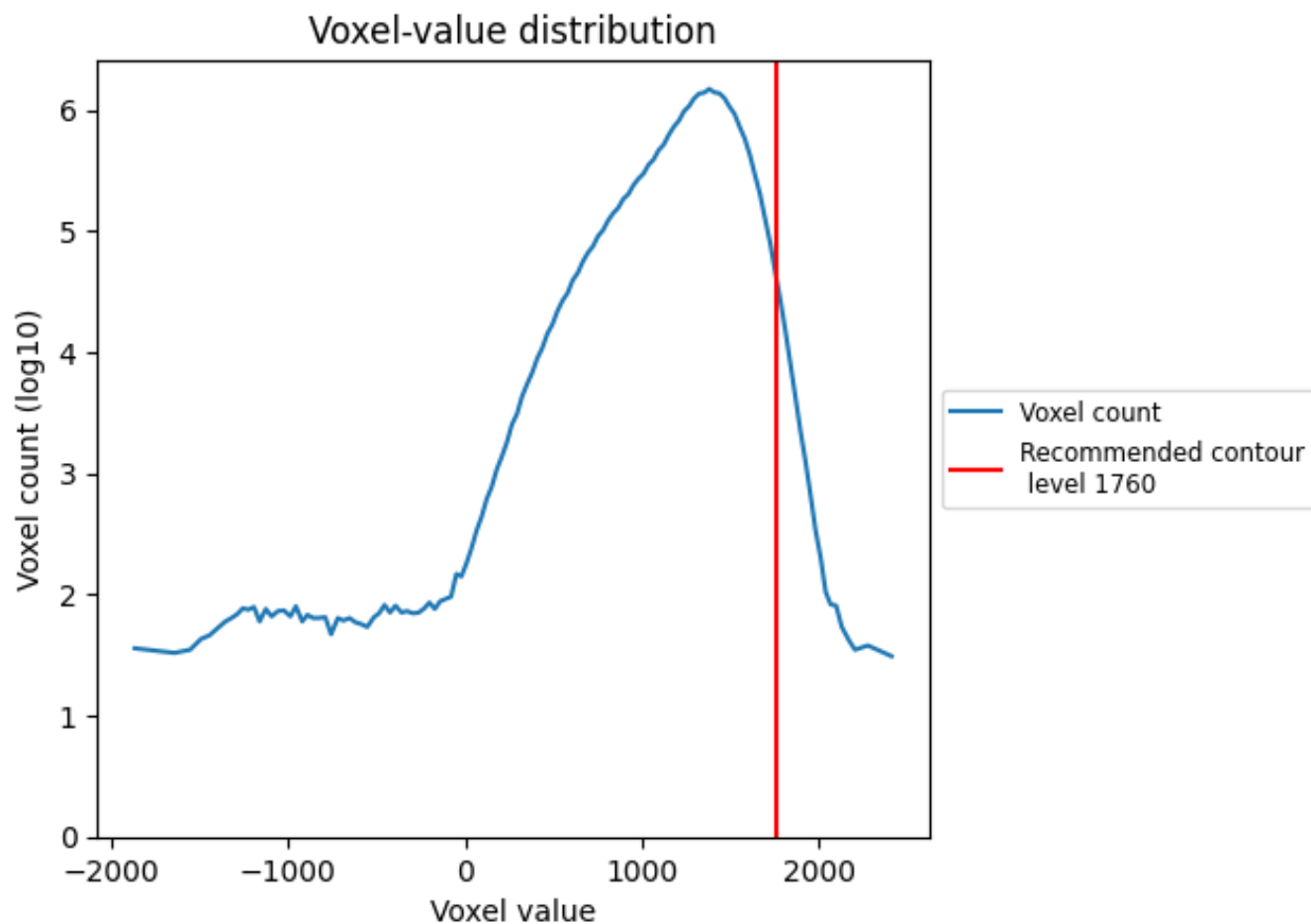
2.5 Mask visualisation [i](#)

This section was not generated. No masks/segmentation were deposited.

3 Tomogram analysis [i](#)

This section contains the results of statistical analysis of the tomogram.

3.1 Voxel-value distribution [i](#)



The voxel-value distribution is plotted in 128 intervals along the x-axis. The y-axis is logarithmic.