



Full wwPDB EM Validation Report ⓘ

Mar 5, 2026 – 11:25 AM UTC

EMDB ID : EMD-10287
Title : CLEM of resin-embedded GFP-Scs2 yeast cell shown in Figure 2A of publication
Authors : Hoffmann, P.C.; Bharat, T.A.M.; Wozny, M.R.; Boulanger, J.; Miller, E.A.; Kukulski, W.
Deposited on : 2019-09-04
Resolution : Not provided

This is a Full wwPDB EM Validation Report for a publicly released PDB entry.

We welcome your comments at validation@mail.wwpdb.org

A user guide is available at

<https://www.wwpdb.org/validation/2017/EMTomogramValidationReportHelp>
with specific help available everywhere you see the ⓘ symbol.

The types of validation reports are described at

<http://www.wwpdb.org/validation/2017/FAQs#types>.

The following versions of software and data (see [references ⓘ](#)) were used in the production of this report:

EMDB validation analysis : 0.0.1.dev132
Validation Pipeline (wwPDB-VP) : 2.49

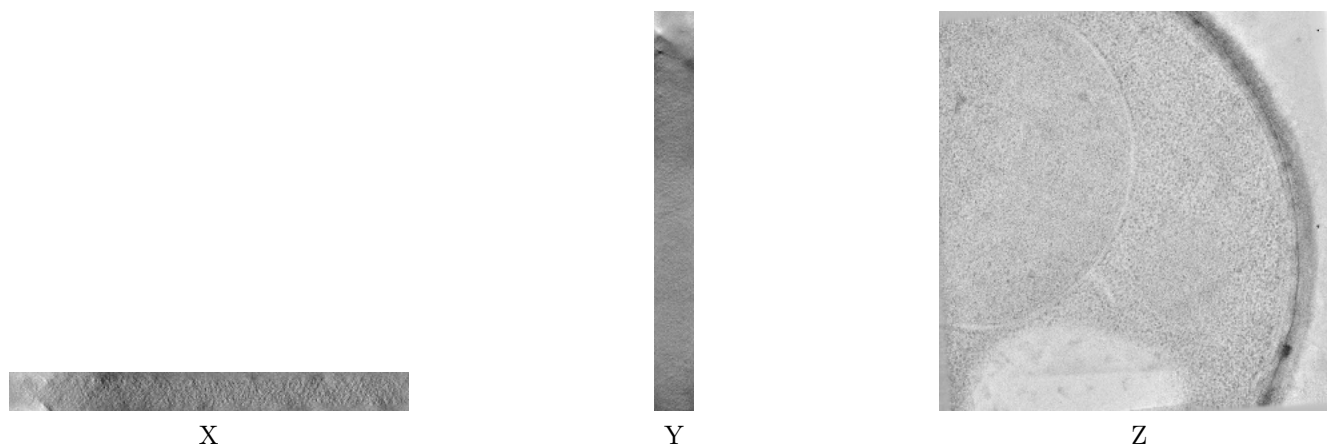
1 Experimental information

| Property | Value | Source |
|--------------------------------------|-----------------------------|-----------|
| EM reconstruction method | TOMOGRAPHY | Depositor |
| Imposed symmetry | Not Provided | |
| Number of tilted images used | 223 | Depositor |
| Resolution determination method | Not provided | |
| CTF correction method | Not provided | |
| Microscope | FEI TECNAI F20 | Depositor |
| Voltage (kV) | 200 | Depositor |
| Electron dose ($e^-/\text{\AA}^2$) | 1000.0 | Depositor |
| Minimum defocus (nm) | Not provided | |
| Maximum defocus (nm) | Not provided | |
| Magnification | Not provided | |
| Image detector | OTHER | Depositor |
| Maximum voxel value | 127.000 | Depositor |
| Minimum voxel value | -128.000 | Depositor |
| Average voxel value | 6.120 | Depositor |
| Voxel value standard deviation | 8.729 | Depositor |
| Recommended contour level | Not applicable | |
| Tomogram size (\AA) | 22568.96, 22568.96, 2115.84 | wwPDB |
| Tomogram dimensions | 2048, 2048, 192 | wwPDB |
| Tomogram angles ($^\circ$) | 90.0, 90.0, 90.0 | wwPDB |
| Grid spacing (\AA) | 11.02, 11.02, 11.02 | Depositor |

2 Tomogram visualisation [i](#)

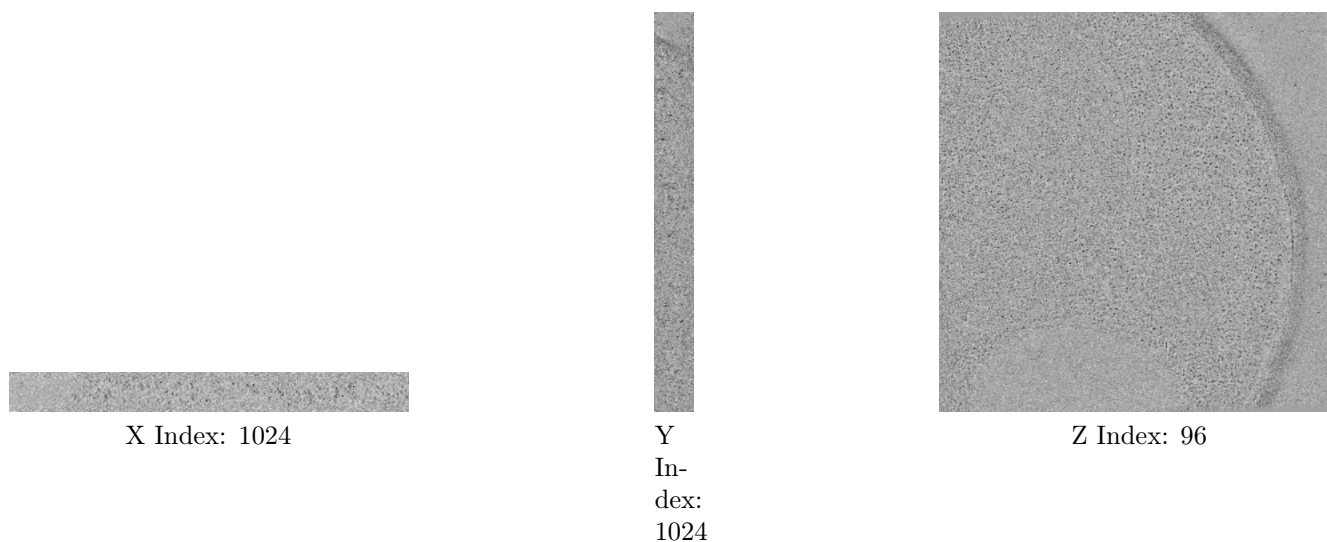
This section contains visualisations of the EMDB entry EMD-10287. These allow visual inspection of the internal detail of the tomogram and identification of artifacts.

2.1 Orthogonal projections [i](#)



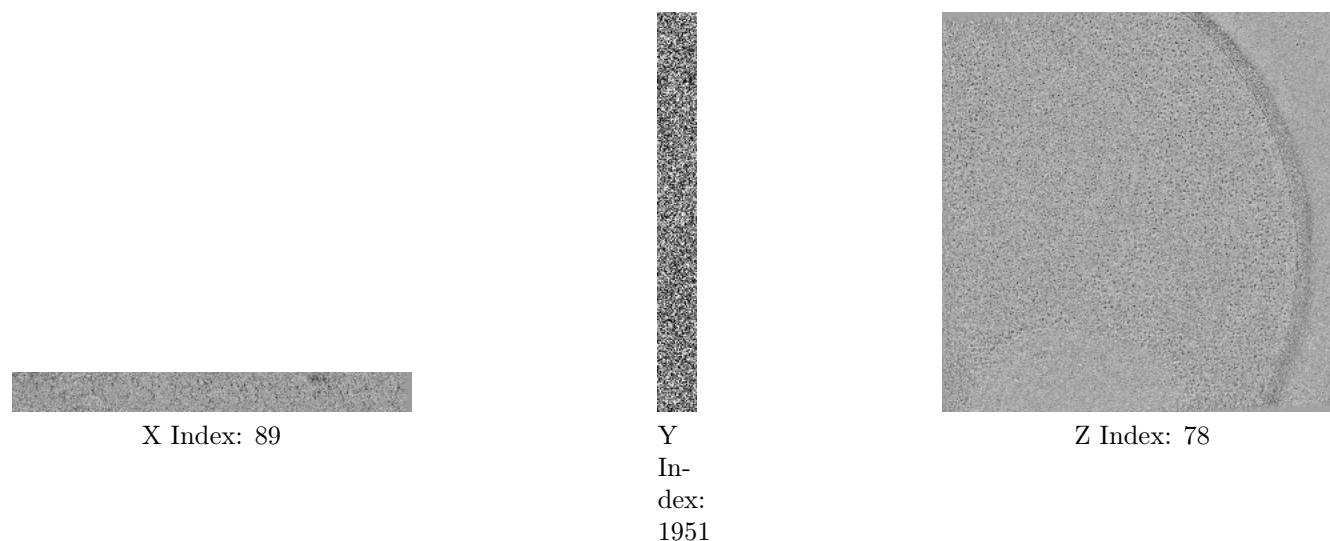
The images above show the tomogram projected in three orthogonal directions.

2.2 Central slices [i](#)



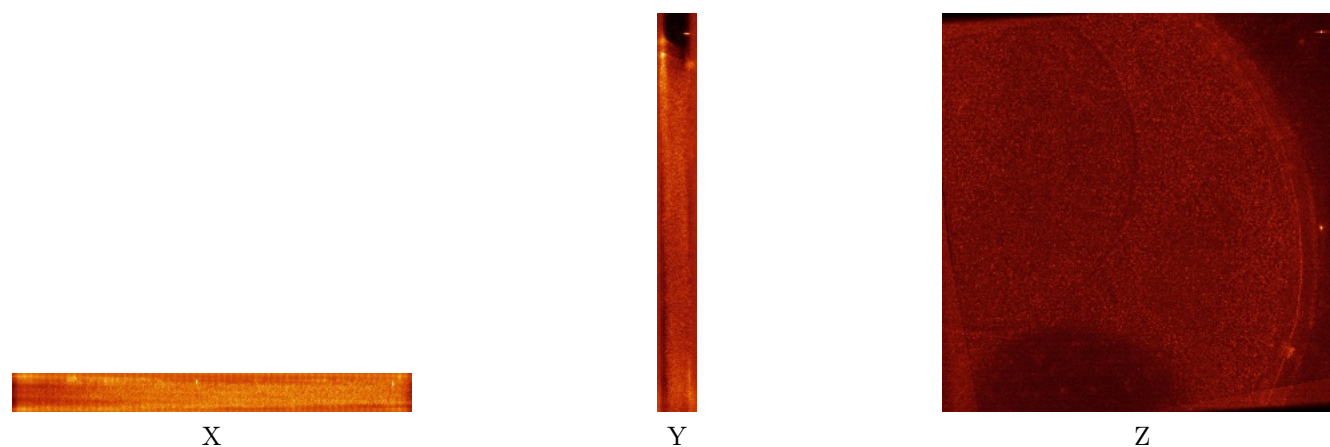
The images above show central slices of the tomogram in three orthogonal directions.

2.3 Largest variance slices [i](#)



The images above show the largest variance slices of the tomogram in three orthogonal directions.

2.4 Orthogonal standard-deviation projections (False-color) [i](#)



The images above show the tomogram projected in three orthogonal directions.

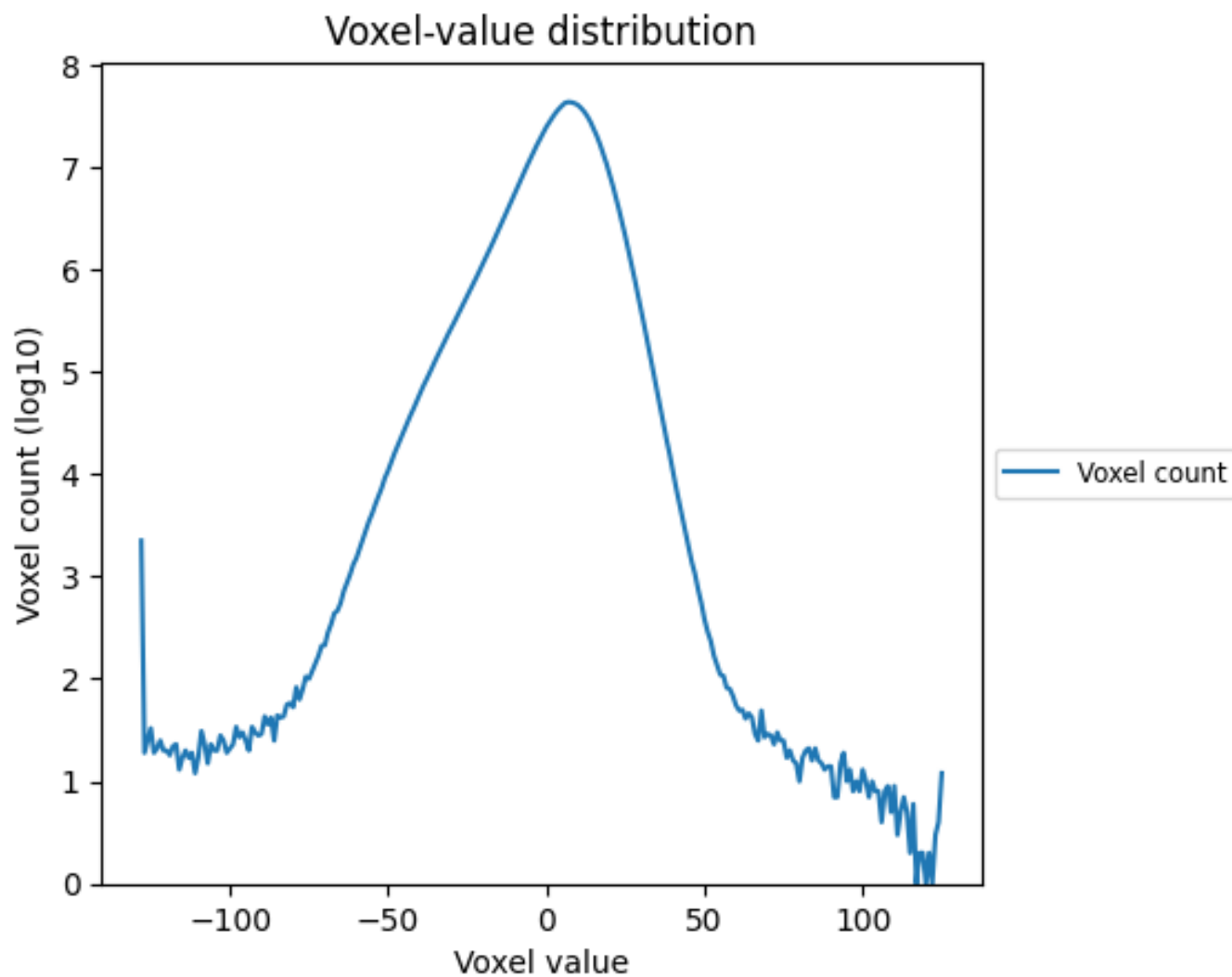
2.5 Mask visualisation [i](#)

This section was not generated. No masks/segmentation were deposited.

3 Tomogram analysis [i](#)

This section contains the results of statistical analysis of the tomogram.

3.1 Voxel-value distribution [i](#)



The voxel-value distribution is plotted in 128 intervals along the x-axis. The y-axis is logarithmic.